

Apr 04, 2014 - 11:50am - 676-A1.dwg  
 H:\Green Farm\Bldg Plan Book\

1

**GIRVEN FARM RESIDENCE - FIRST LEVEL**

SCALE: 3/16" = 1'



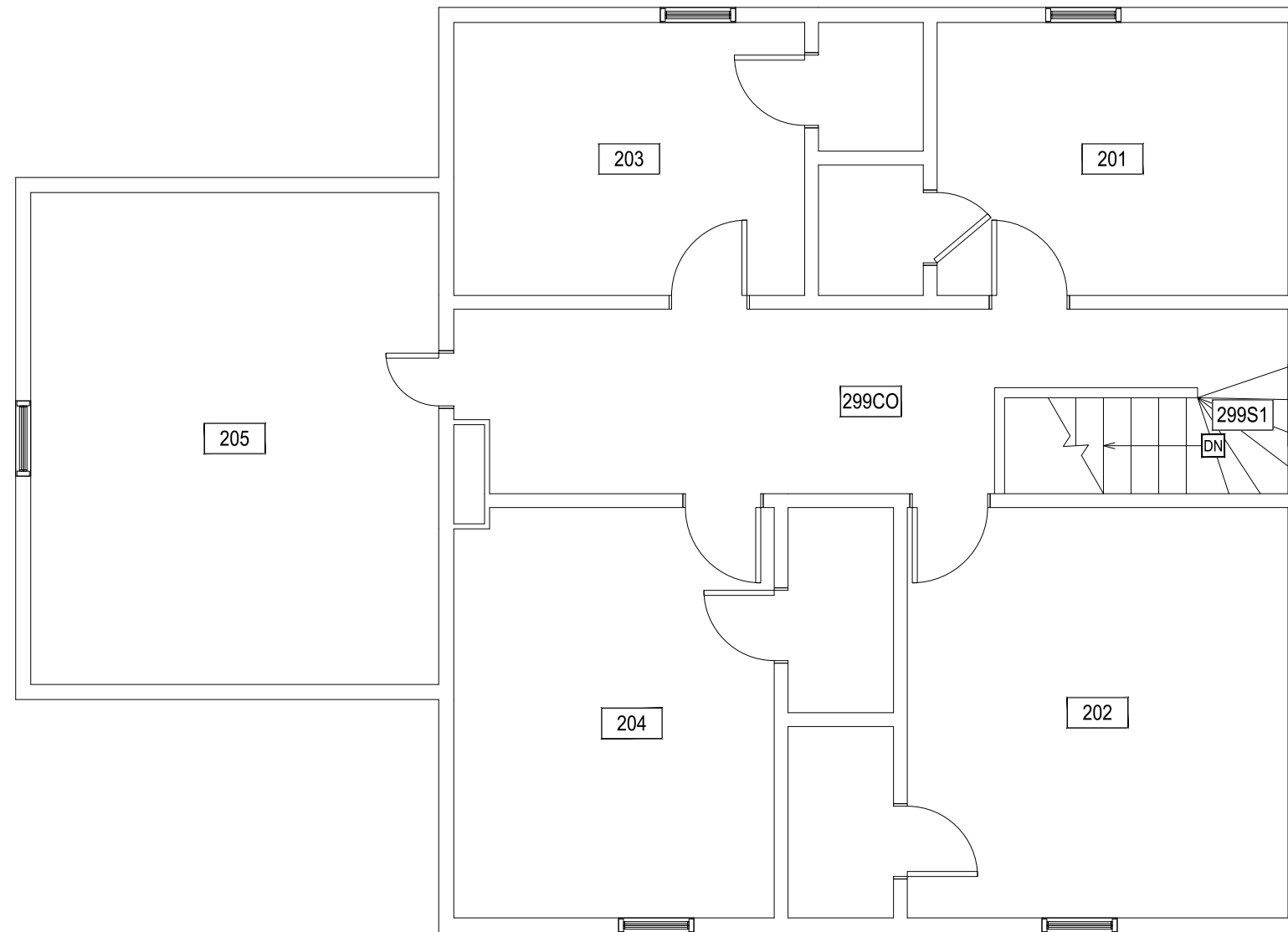
**M MONTANA STATE UNIVERSITY**  
 FACILITIES PLANNING,  
 DESIGN & CONSTRUCTION  
 BOZEMAN, MONTANA  
 PHONE: 406.994.4131 FAX: 406.994.6572

INDEX #

**115**

BUILDING #

**676**



1

GIRVEN FARM RESIDENCE - SECOND LEVEL

SCALE: 3/16" = 1'



Apr 04, 2014 - 11:50am - 676-A2.dwg  
 H:\Green Farm\Bldg Plan Book\

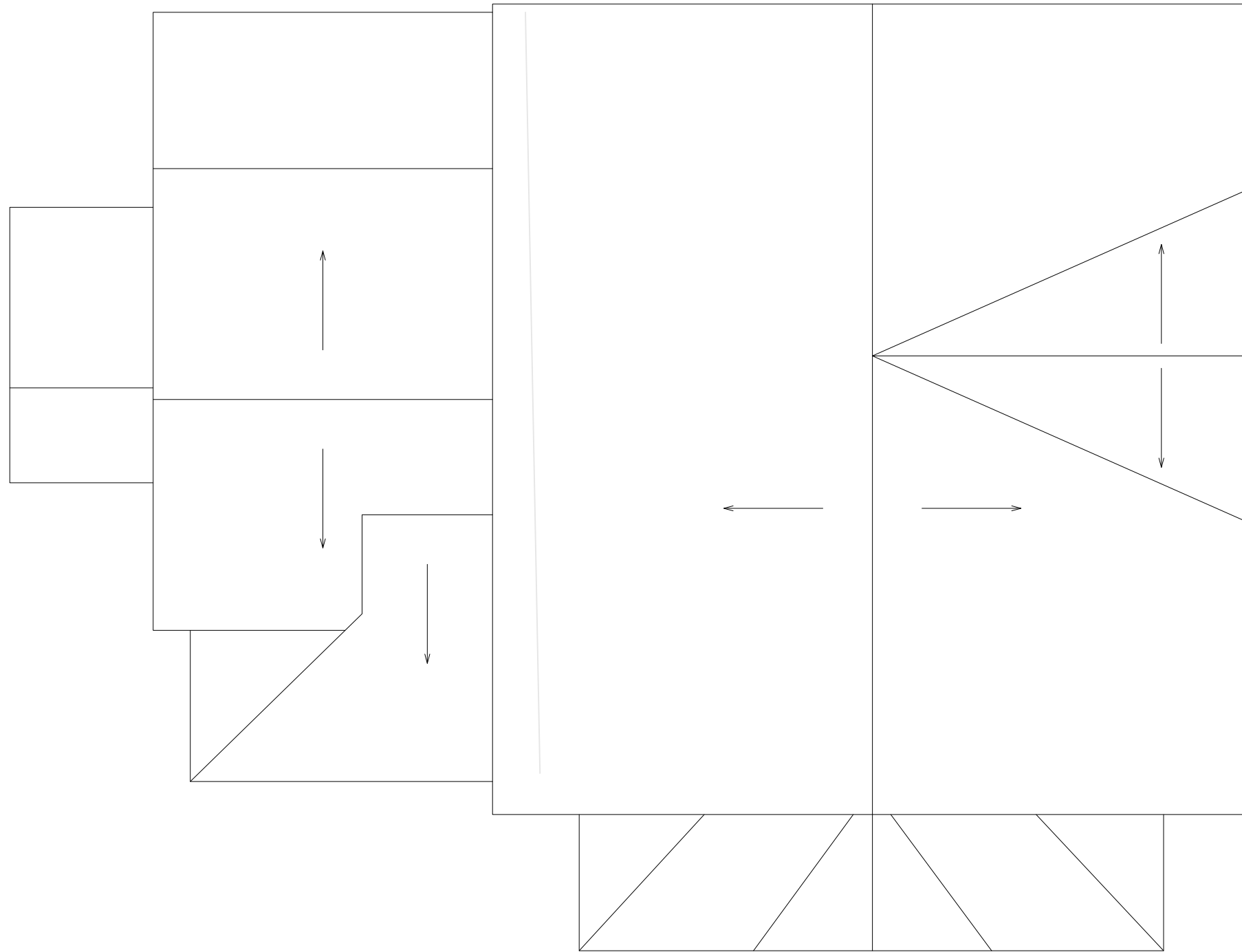
**M** MONTANA  
 STATE UNIVERSITY  
 FACILITIES PLANNING,  
 DESIGN & CONSTRUCTION  
 BOZEMAN, MONTANA  
 PHONE: 406.994.4131 FAX: 406.994.6572

INDEX #

**115**

BUILDING #

**676**



Apr 04, 2014 - 11:50am - 676-AR.dwg  
 H:\Green Farm\Bldg Plan Book\

1

**GIRVEN FARM RESIDENCE - ROOF LEVEL**

SCALE: 3/16" = 1'



**M** MONTANA  
 STATE UNIVERSITY  
 FACILITIES PLANNING,  
 DESIGN & CONSTRUCTION  
 BOZEMAN, MONTANA  
 PHONE: 406.994.4131 FAX: 406.994.6572

INDEX #	<b>115</b>
BUILDING #	<b>676</b>