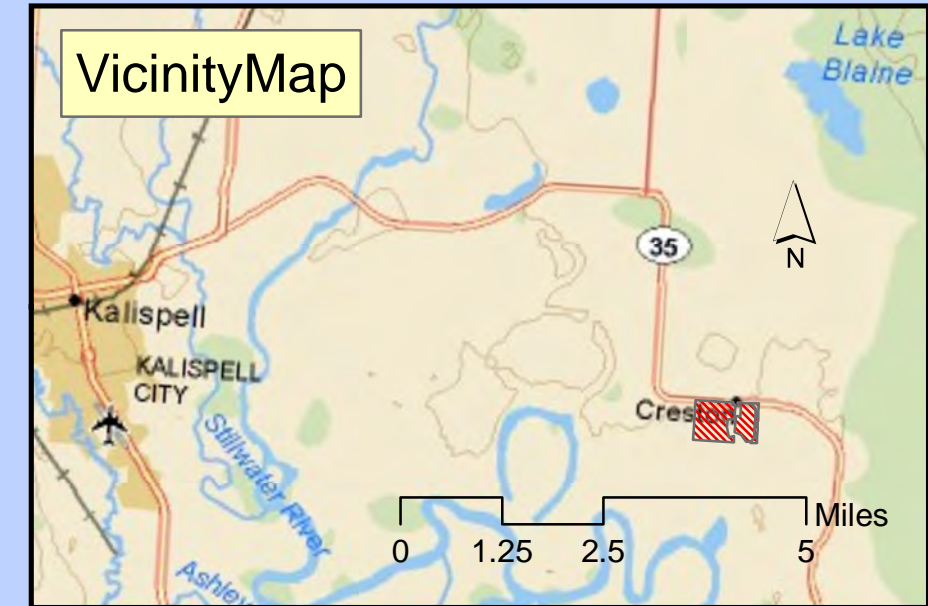
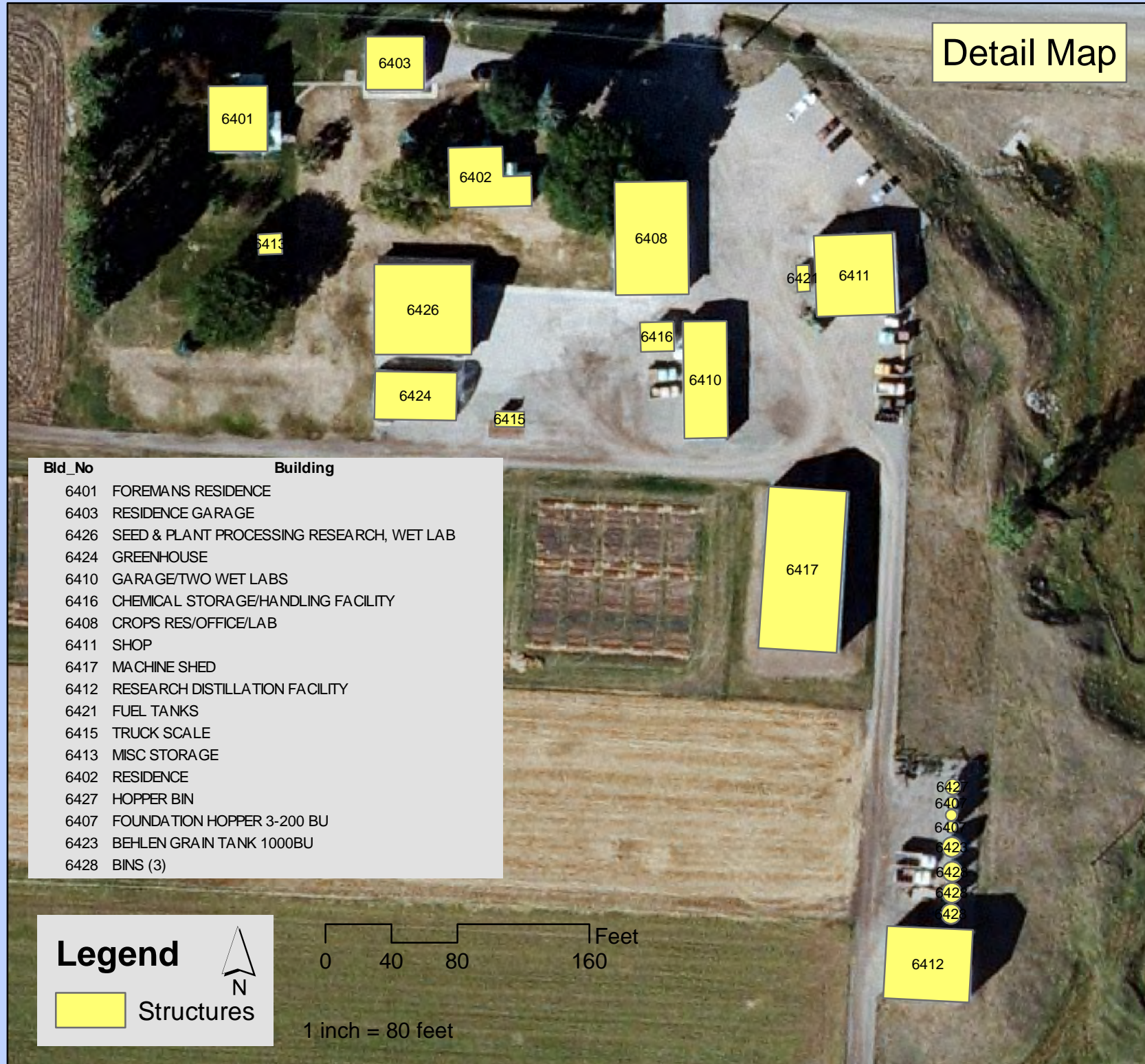


Montana AES: NWARC-Kalispell



Date: 8/3/2011

Drawn by Christian Black

Source: Montana GIS Portal <http://gisportal.msl.mt.gov>, Bing Maps,
 FacilitiesInventory updated February 2001
 Contact FPDC Analyst Matt Hume



Montana State University Facilities Planning, Design, Construction

This product is for informational purposes and may not have been prepared for, or be substituted for legal, engineering, or surveying purposes. Users of this information should review or consult the primary data and information sources to ascertain the usability of the information.
 Buildings shapes are approximate and not to scale.

Building Pictures of NWARC

Photos originally taken 2/18/2011, verified to be depict buildings' current use and appearance 5/21/2015. Updated photos taken after 2011 are dated.

Pictures ordered by building number except where noted



Sections

1. Building Photos – Interior and Exterior Photos
2. Structures on Site that Are Not Buildings – Bins, Propane Tanks
3. Other Site Issues

Interior and Exterior Photos of Buildings

1. BUILDING PHOTOS



Bldg #6401 – Foreman's Residence



Bldg #6402 - Residence



Bldg #6402 - Residence



Bldg #6403 - Garage



Bldg #6408 – Main Office/Crops Research/Wet Lab



Bldg #6408 – Main Office/Crops Research/Wet Lab



Bldg #6408 – Main Office/Crops Research/Wet Lab



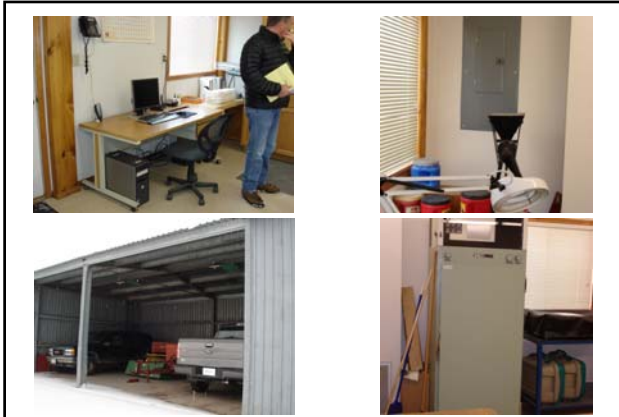
looking south East toward Bldg #s 6408, 6416, 6410, 6417, 6412



Bldg #6410 – Garage / Two Wet Labs



Wet Lab 1 in Bldg #6410



Wet Lab 1, Garage in Bldg #6410



Wet Lab 2 in Bldg #6410



Bldg #6411 - Shop



Main shop of Bldg #6411 - Shop



Heated storage area in Bldg #6411 - Shop



Unheated part of Bldg #6411 - Shop



Bldg #6412 - Research Distillation Facility



Bldg #6412 - Research Distillation Facility



Bldg #6412 - Research Distillation Facility



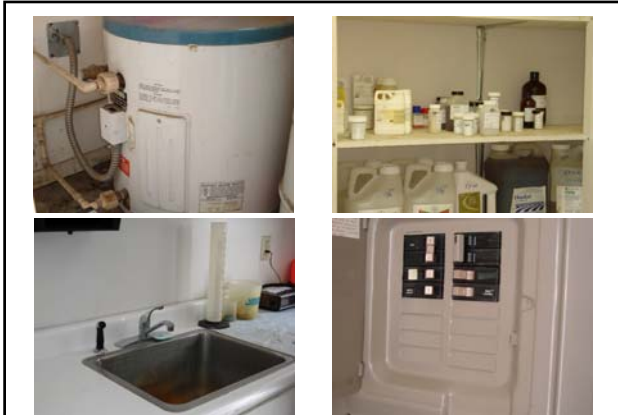
Bldg #6413 - Miscellaneous Storage



Bldg #6415 – Truck Scale



Bldg #6416 – Chemical Storage / Handling Facility



Bldg #6416 – Chemical Storage / Handling Facility



Support Building to right of Bldg #6416 – Chemical Storage / Handling Facility



Bldg #6417 – Machine Shed



Bldg #6417 – Machine Shed



Bldg #6424 – NWARC Greenhouse



Bldg #6424 – NWARC Greenhouse



Bldg #6426 – Seed & Plant Processing Research, Wet Lab



Bldg #6426 – Seed & Plant Processing Research, Wet Lab



Bldg #6426 – Seed & Plant Processing Research, Wet Lab



Bldg #6426 – Seed & Plant Processing Research, Wet Lab

Bins, Propane Tanks, Other

2. STRUCTURES ON SITE THAT ARE NOT BUILDINGS



Grain Silos left to right:
Bldg #s 6427, 6407 (three bins), 6423, 6428 (three bins)



Bldg #6421 – Fuel Tanks

3. OTHER SITE ISSUES



Ravine that separates 10 acres from the main operation. Forces workers and clients to drive onto hazardous highway situations. A bridge for crossing is desirable.