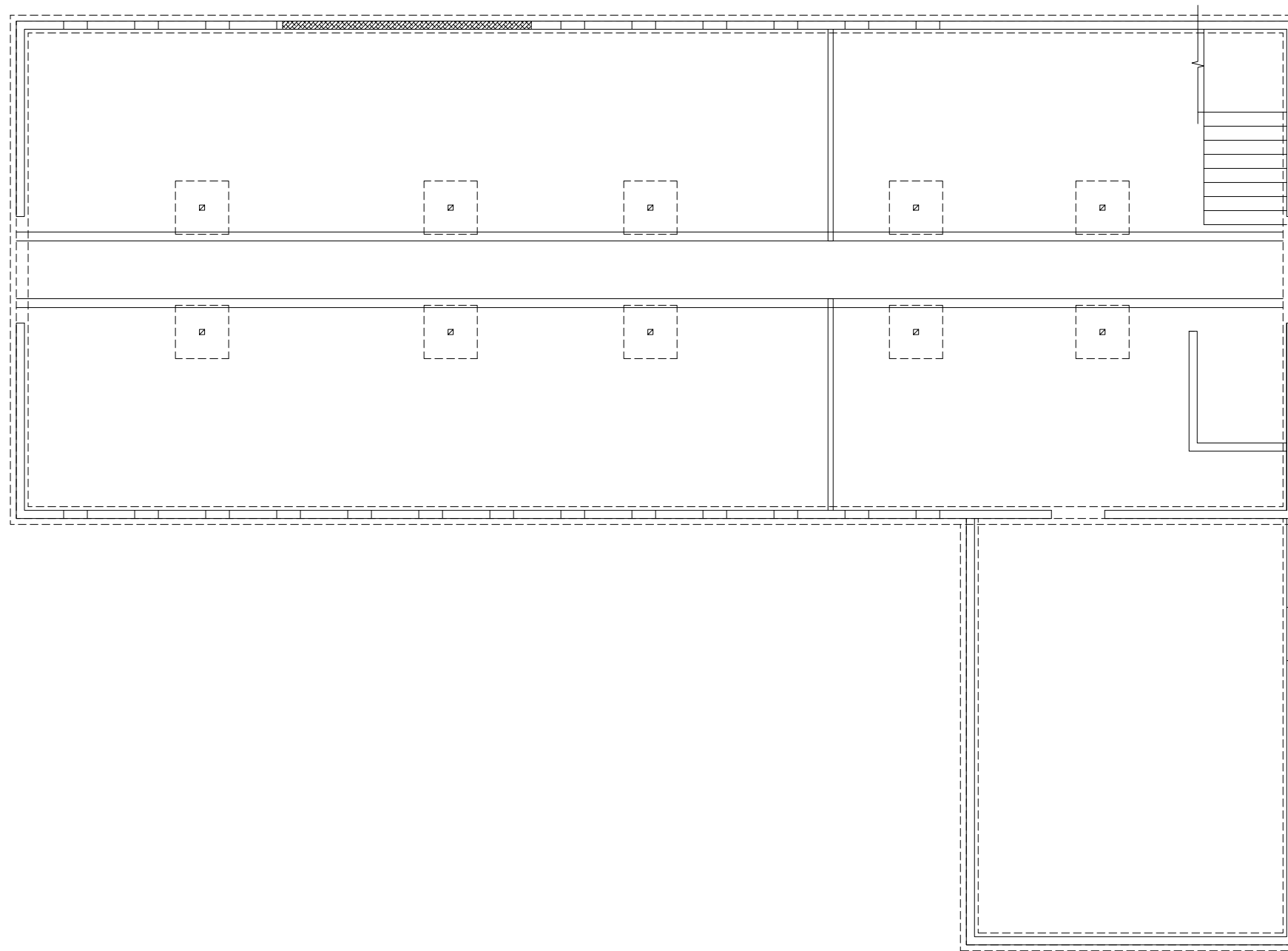


Dec 27, 2016 - 7:47am - 631_A1.dwg
C:\Users\gary.gramer\appdata\local\temp\AcPublish_3260\



1

FS - POULTRY BARN (VACANT) - FIRST LEVEL

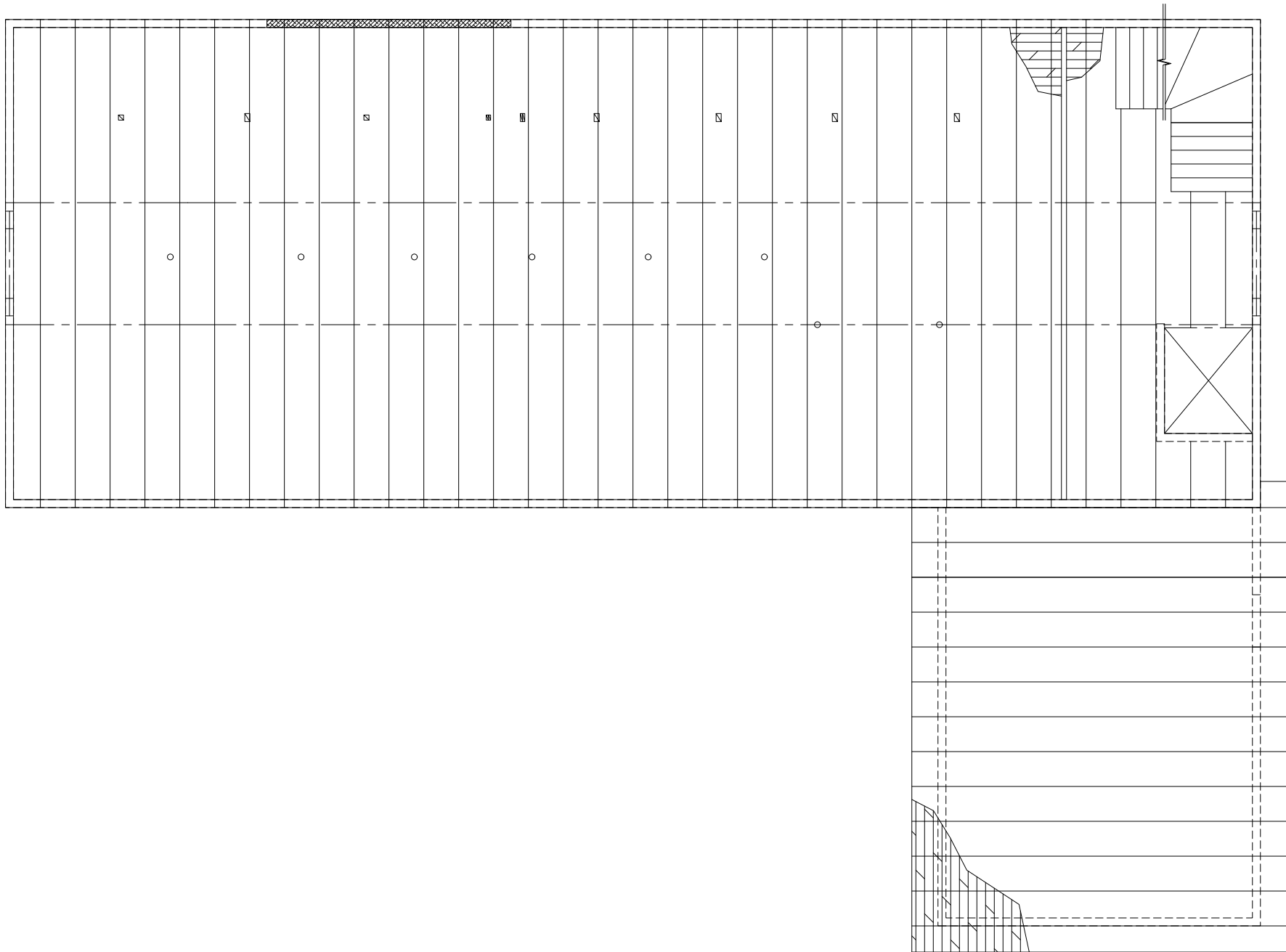
SCALE: 1/8" = 1'



M MONTANA
STATE UNIVERSITY
CAMPUS PLANNING,
DESIGN & CONSTRUCTION
BOZEMAN, MONTANA
PHONE: 406.994.5413 FAX: 406.994.5665

INDEX #
60
BUILDING #
631

Dec 27, 2016 - 7:47am - 631_A3.dwg
C:\Users\gary.gramer\appdata\local\temp\AcPublish_3260\



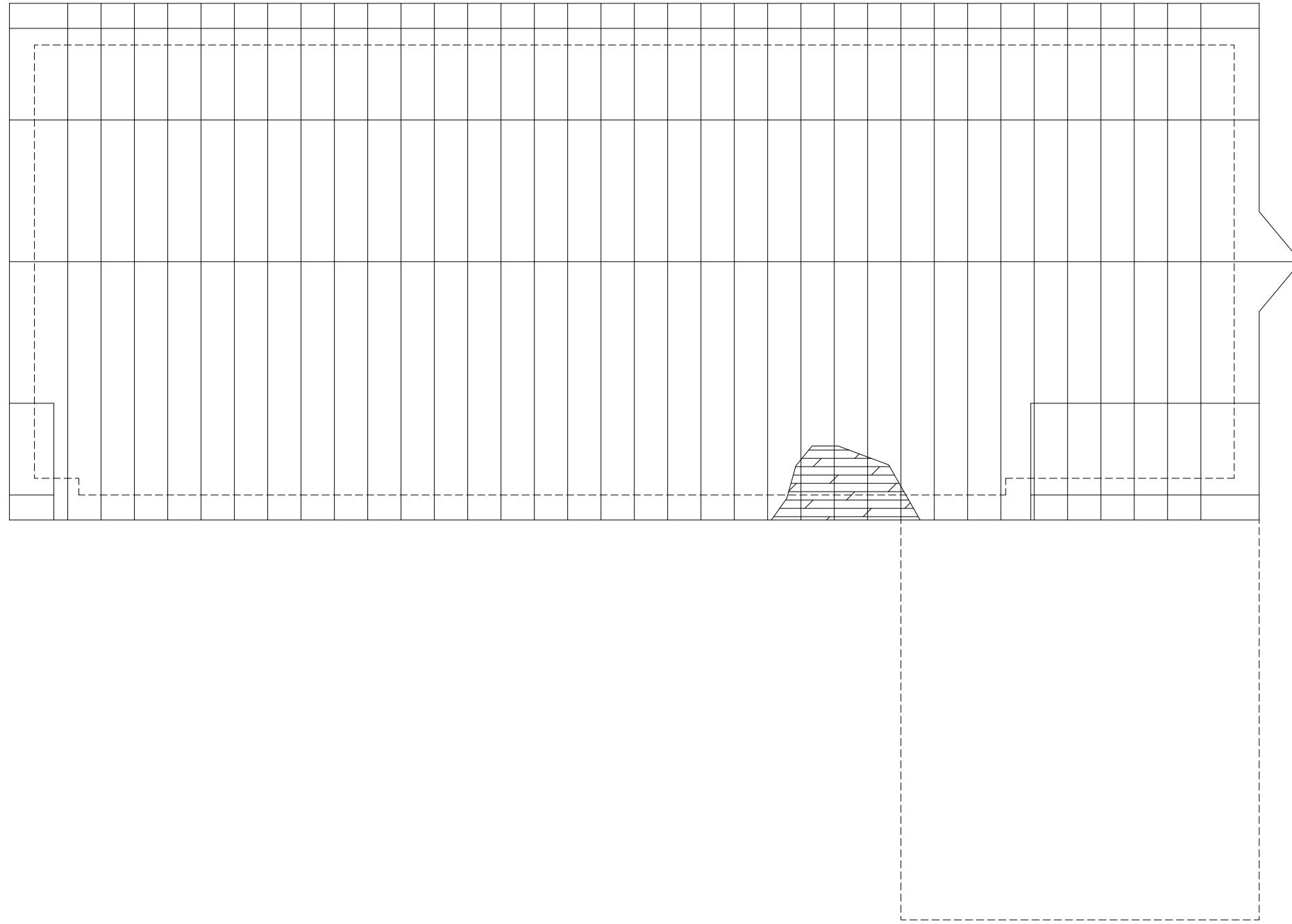
1 FS - POULTRY BARN (VACANT) - SECOND LEVEL
SCALE: 1/8" = 1'



M MONTANA
STATE UNIVERSITY
CAMPUS PLANNING,
DESIGN & CONSTRUCTION
BOZEMAN, MONTANA
PHONE: 406.994.5413 FAX: 406.994.5665

INDEX #	60
BUILDING #	631

Dec 27, 2016 - 7:47am - 631_A3.dwg
C:\Users\gary.gramer\appdata\local\temp\AcPublish_3260\



1

FS - POULTRY BARN (VACANT) - THIRD LEVEL

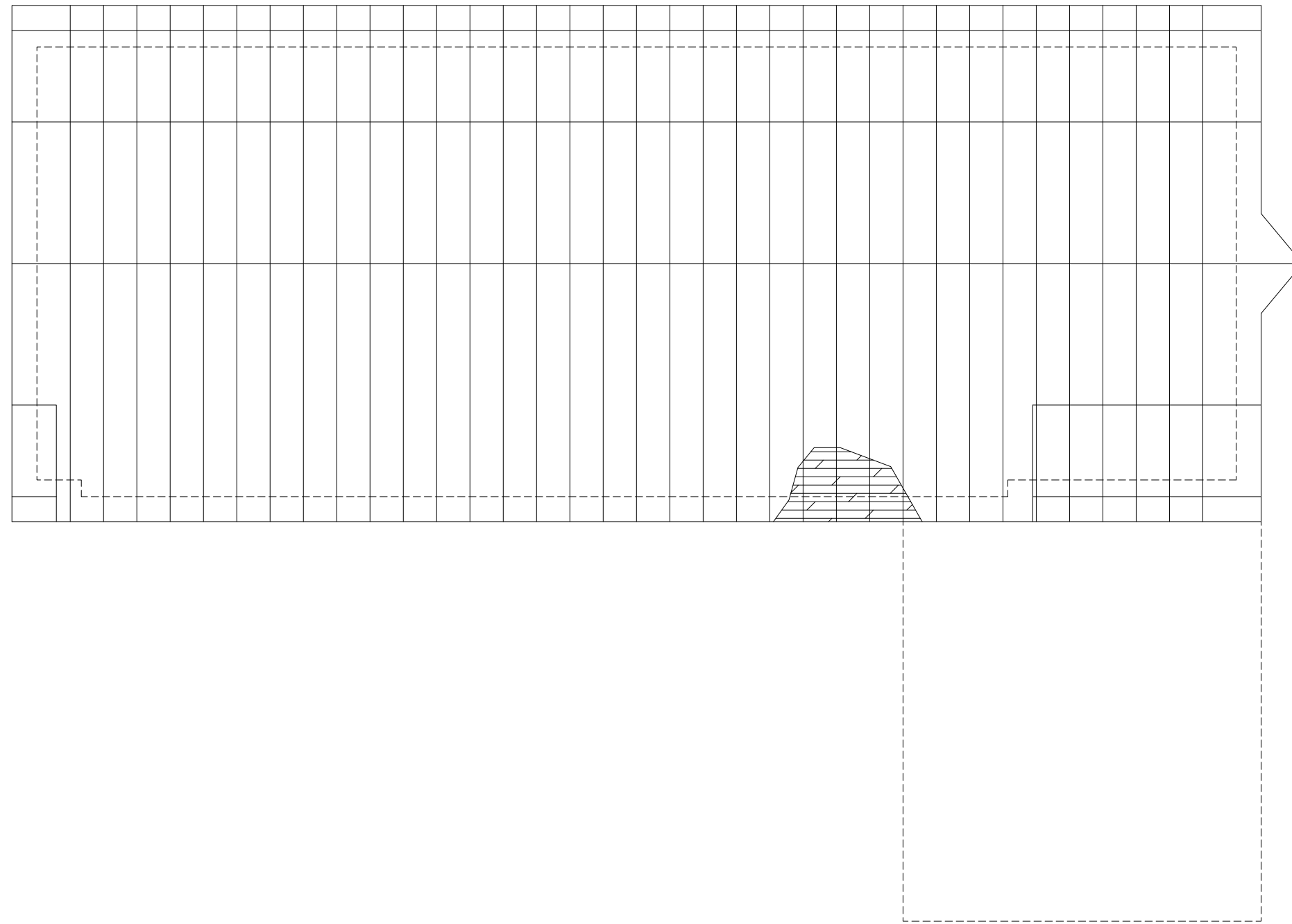
SCALE: 1/8" = 1'



M MONTANA
STATE UNIVERSITY
CAMPUS PLANNING,
DESIGN & CONSTRUCTION
BOZEMAN, MONTANA
PHONE: 406.994.5413 FAX: 406.994.5665

INDEX #	60
BUILDING #	631

Dec 27, 2016 - 7:47am - 631_AR.dwg
C:\Users\gary.gramer\appdata\local\temp\AcPublish_3260\



1

FS - POULTRY BARN (VACANT) - ROOF LEVEL

SCALE: 1/8" = 1'



M MONTANA
STATE UNIVERSITY
CAMPUS PLANNING,
DESIGN & CONSTRUCTION
BOZEMAN, MONTANA
PHONE: 406.994.5413 FAX: 406.994.5665

INDEX #	60
BUILDING #	631