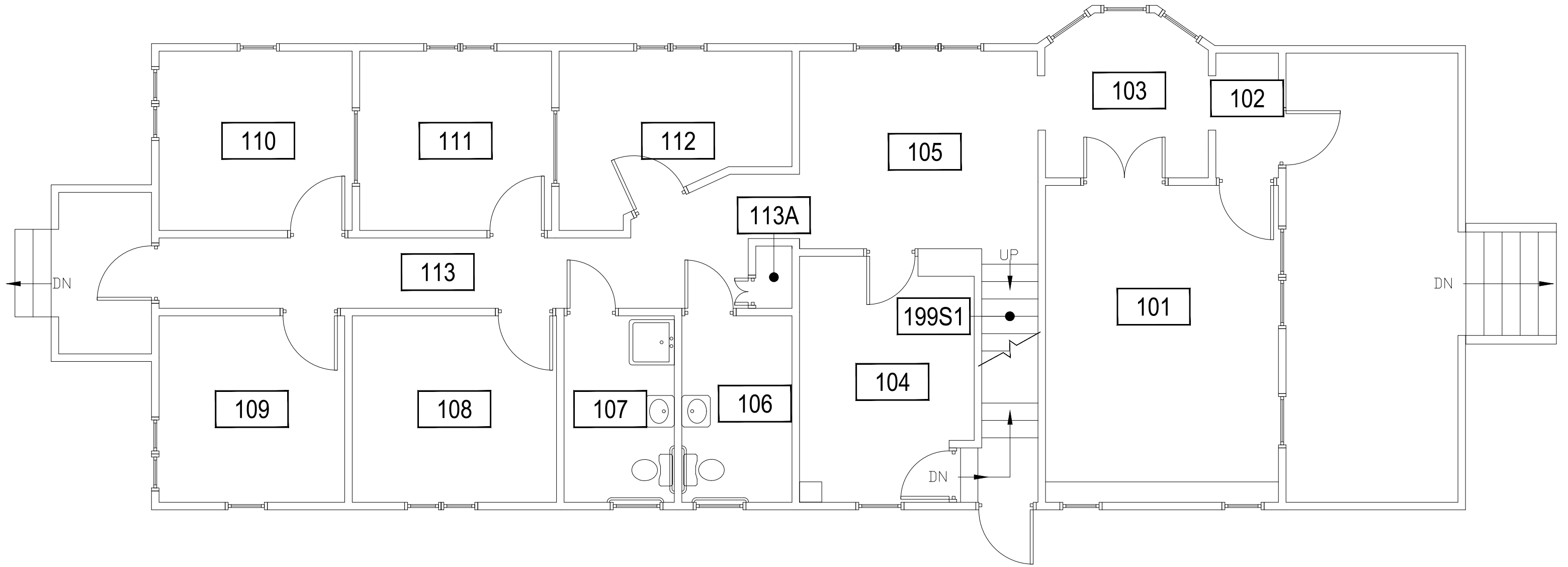


1
KELLOGG CENTER - BASEMENT LEVEL
N
 SCALE: 3/16" = 1'

M MONTANA
 STATE UNIVERSITY
 CAMPUS PLANNING,
 DESIGN & CONSTRUCTION
 BOZEMAN, MONTANA
 PHONE: 406.994.5413 FAX: 406.994.5665

INDEX #	59
BUILDING #	630



Dec 27, 2016 - 7:34am - 630_A1.dwg
 H:\Kellogg Center\Building Plan - Book Copy\

1

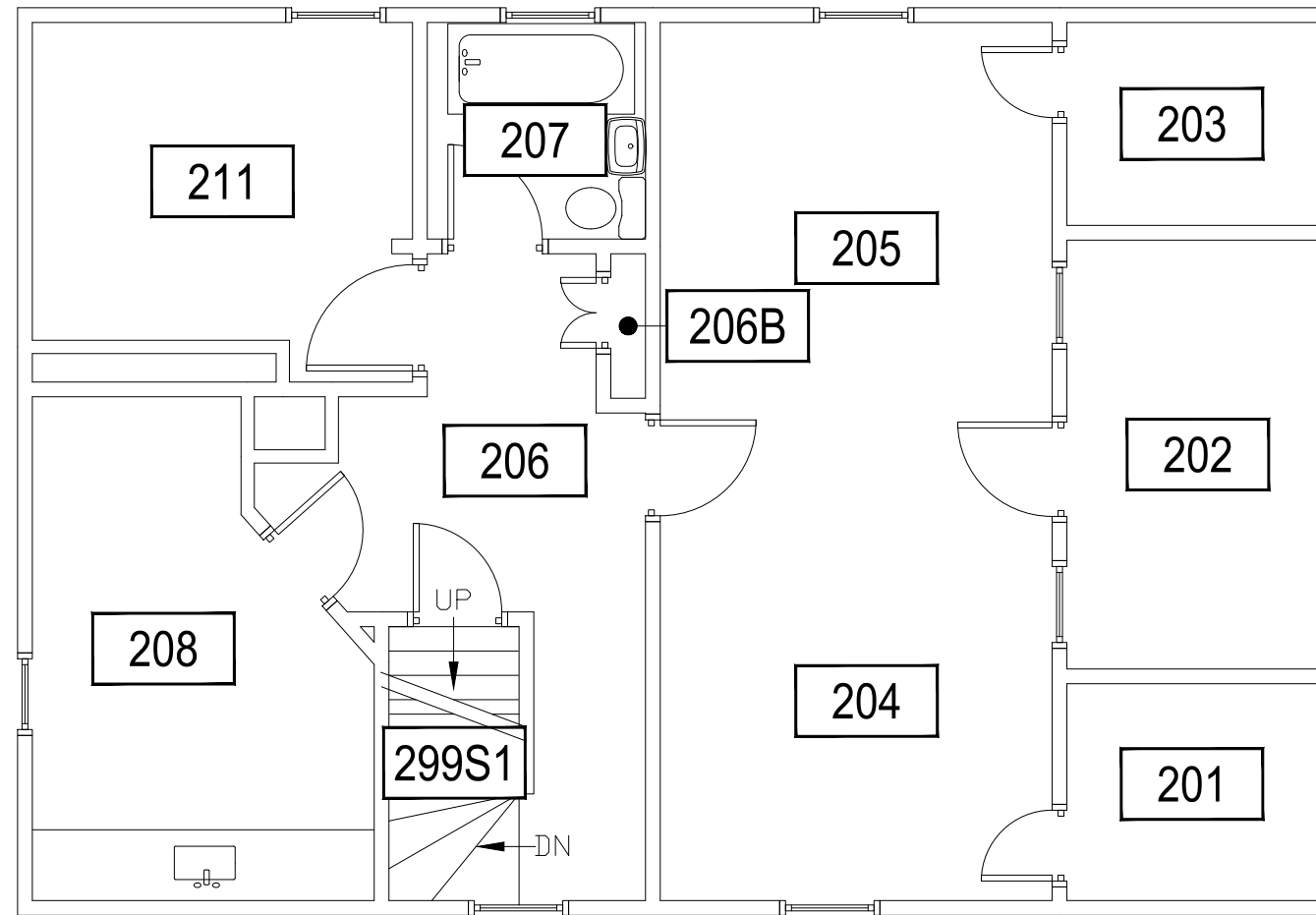
KELLOGG CENTER - FIRST LEVEL

SCALE: 3/16" = 1'




MONTANA
 STATE UNIVERSITY
 CAMPUS PLANNING,
 DESIGN & CONSTRUCTION
 BOZEMAN, MONTANA
 PHONE: 406.994.5413 FAX: 406.994.5665

INDEX #	59
BUILDING #	630



1

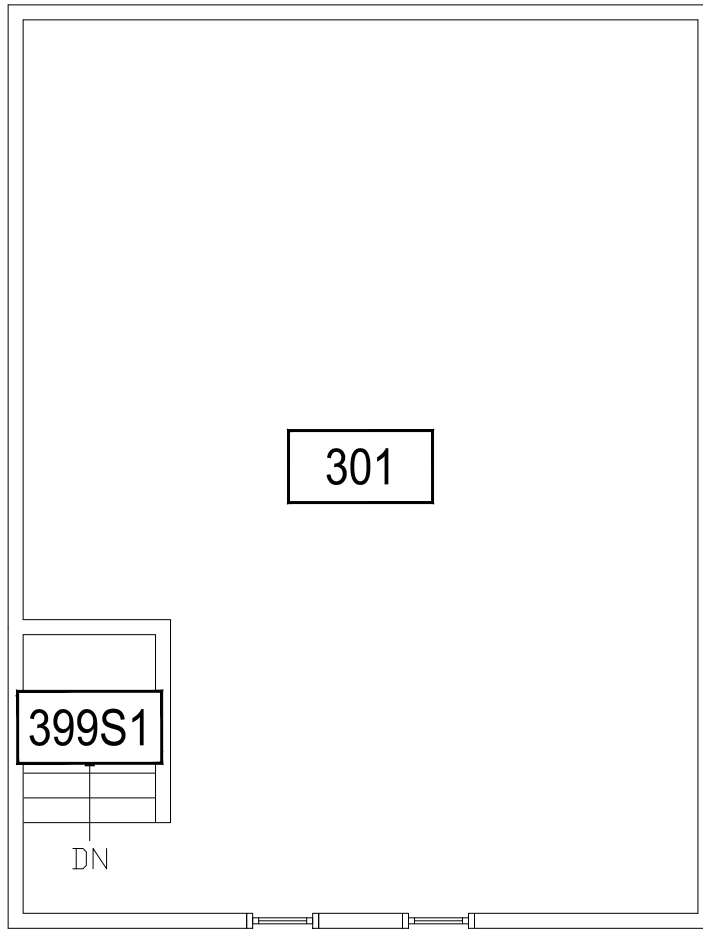
KELLOGG CENTER - SECOND LEVEL

SCALE: 3/16" = 1'



M MONTANA
STATE UNIVERSITY
CAMPUS PLANNING,
DESIGN & CONSTRUCTION
BOZEMAN, MONTANA
PHONE: 406.994.5413 FAX: 406.994.5665

INDEX #	59
BUILDING #	630



1

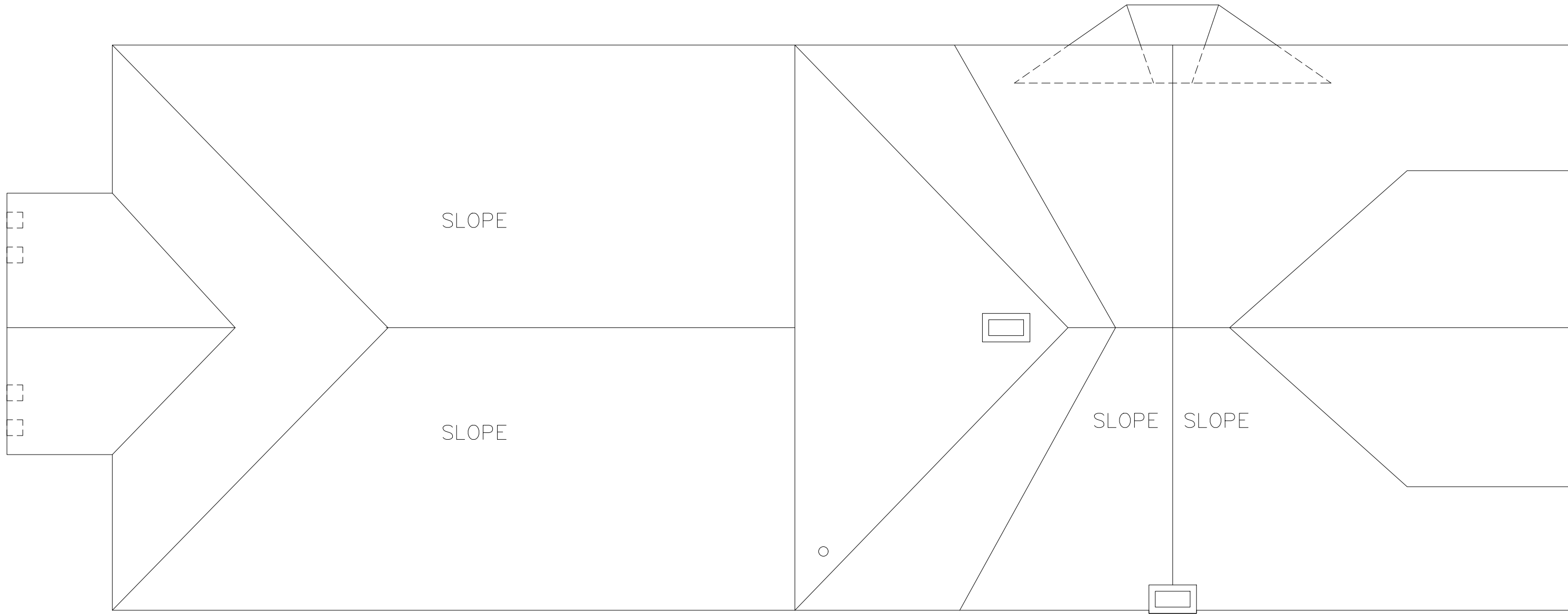
KELLOGG CENTER - THIRD (ATTIC) LEVEL

SCALE: 3/16" = 1'



M MONTANA
STATE UNIVERSITY
CAMPUS PLANNING,
DESIGN & CONSTRUCTION
BOZEMAN, MONTANA
PHONE: 406.994.5413 FAX: 406.994.5665

INDEX #	59
BUILDING #	630



Dec 27, 2016 - 7:34am - 630_AR.dwg
H:\Kellogg Center\Building Plan - Book Copy\

1

KELLOGG CENTER - ROOF LEVEL

SCALE: 3/16" = 1'



M MONTANA
STATE UNIVERSITY
CAMPUS PLANNING,
DESIGN & CONSTRUCTION
BOZEMAN, MONTANA
PHONE: 406.994.5413 FAX: 406.994.5665

INDEX #	59
BUILDING #	630