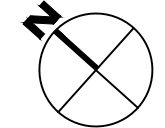


1

S 15TH AVENUE - 1002 - FIRST LEVEL

SCALE: 3/8" = 1'

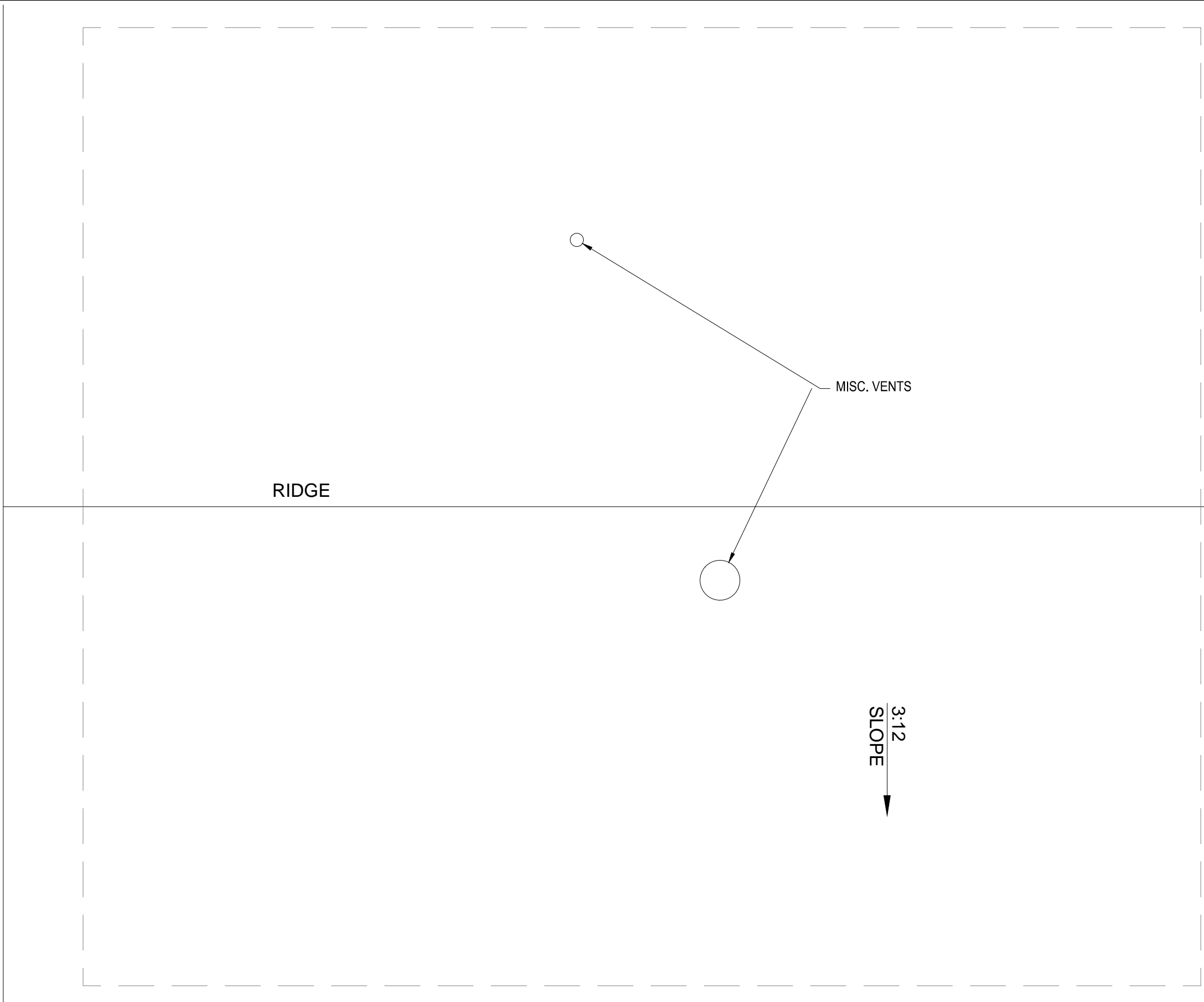


Nov 14, 2013 - 3:20pm - 5661002_1.dwg
H:\Family Housing\S 15th Avenue\Building Plan - Book Copy\

M MONTANA
STATE UNIVERSITY
FACILITIES PLANNING,
DESIGN & CONSTRUCTION
BOZEMAN, MONTANA
PHONE: 406.994.4131 FAX: 406.994.6572

INDEX #	39
BUILDING #	5661002

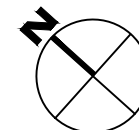
Nov 14, 2013 - 3:20pm - 5661002_AR.dwg
H:\Family Housing\S 15th Avenue\Building Plan - Book Copy\



1

S 15TH AVENUE - 1002 - ROOF LEVEL

SCALE: 3/8" = 1'



M MONTANA
STATE UNIVERSITY
FACILITIES PLANNING,
DESIGN & CONSTRUCTION
BOZEMAN, MONTANA
PHONE: 406.994.4131 FAX: 406.994.6572

INDEX #
39
BUILDING #
5661002