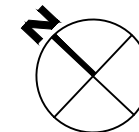


1

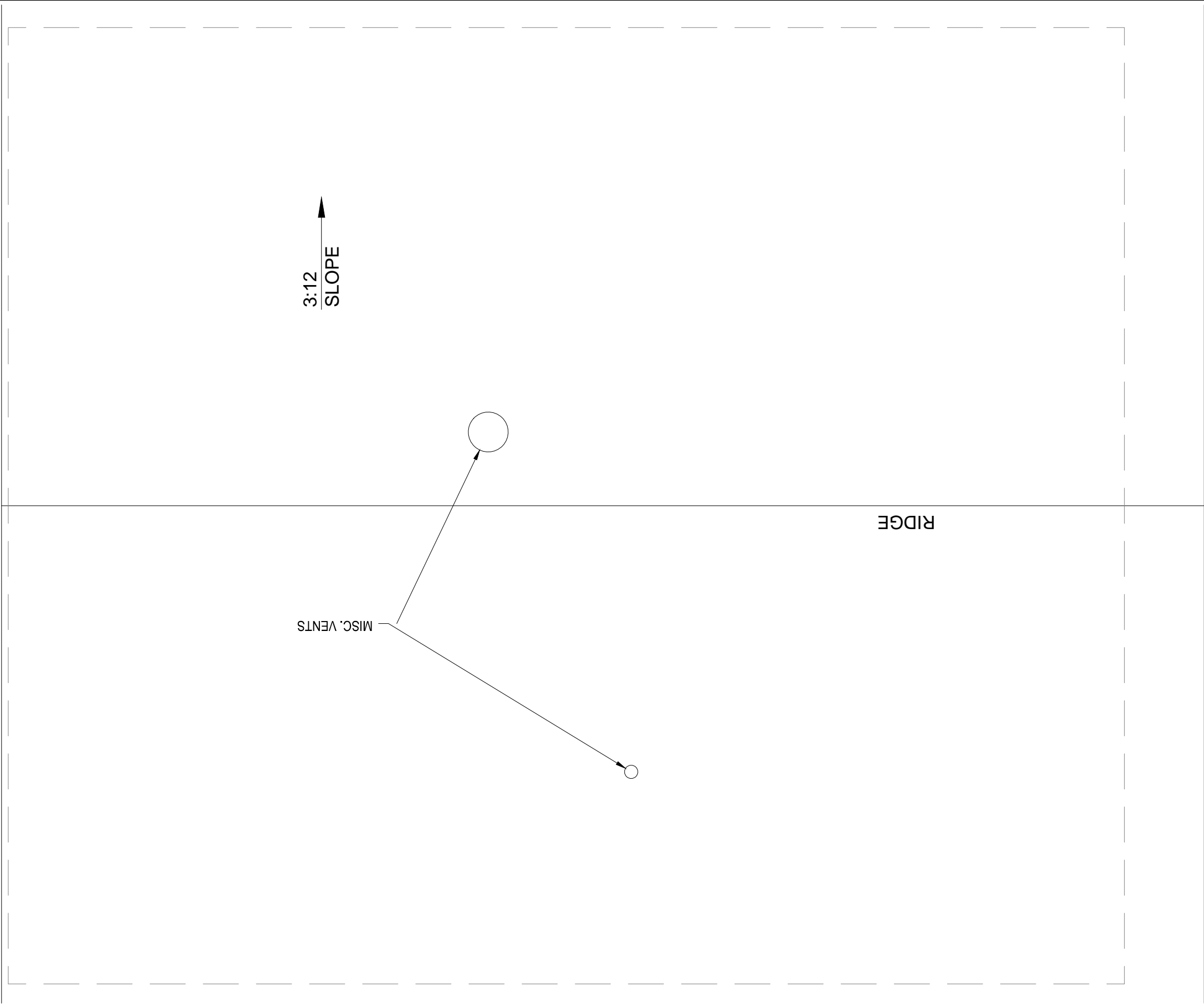
GLACIER COURT - 22 - FIRST LEVEL

SCALE: 3/8" = 1'



M MONTANA
STATE UNIVERSITY
FACILITIES PLANNING,
DESIGN & CONSTRUCTION
BOZEMAN, MONTANA
PHONE: 406.994.4131 FAX: 406.994.6572

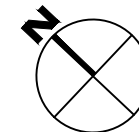
INDEX #
39
BUILDING #
5630022



1

GLACIER COURT - 22 - ROOF LEVEL

SCALE: 3/8" = 1'



M MONTANA
STATE UNIVERSITY
FACILITIES PLANNING,
DESIGN & CONSTRUCTION
BOZEMAN, MONTANA
PHONE: 406.994.4131 FAX: 406.994.6572

INDEX #	39
BUILDING #	5630022