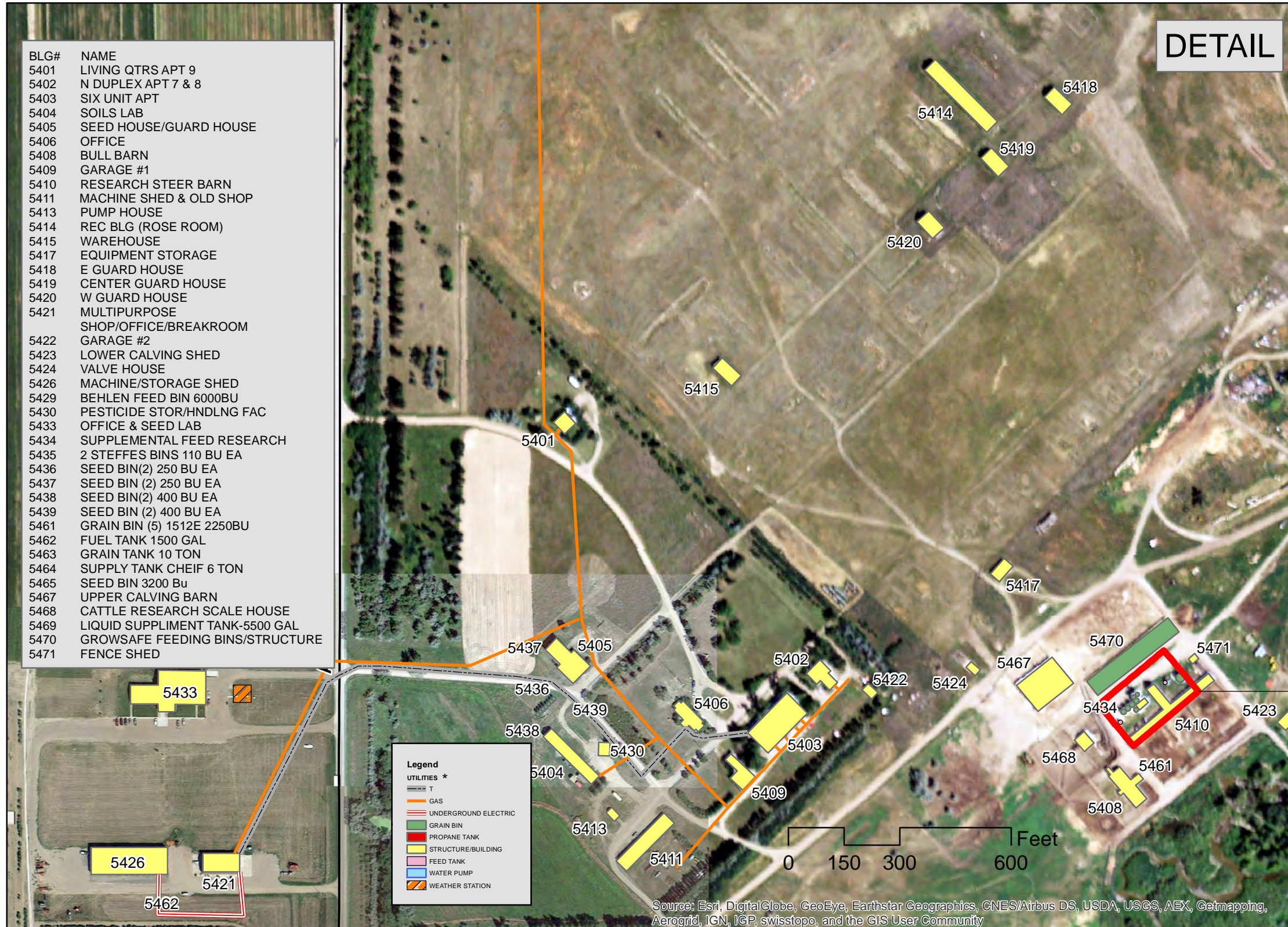
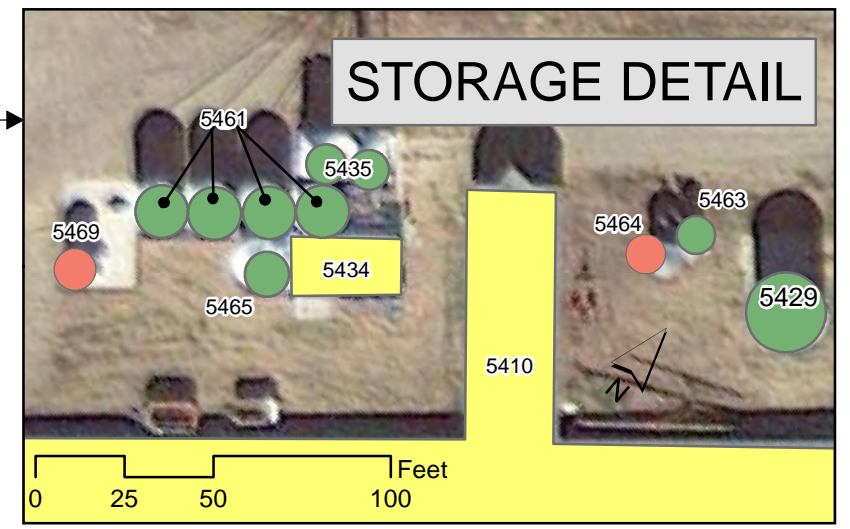
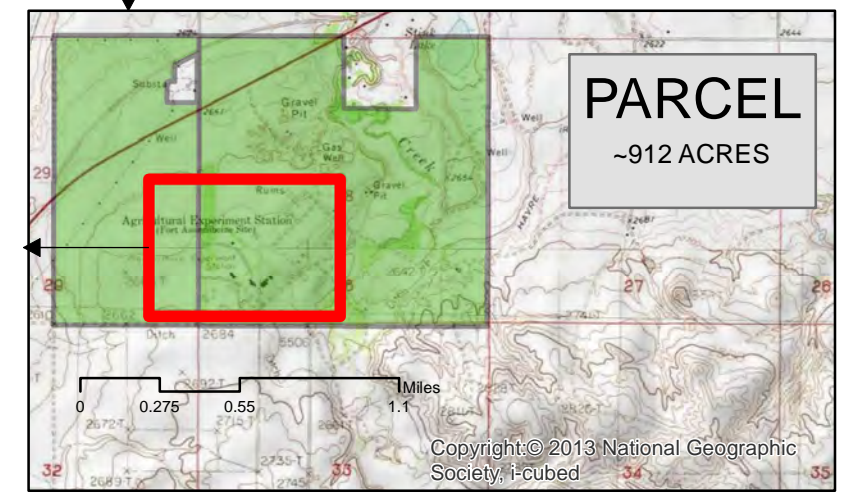
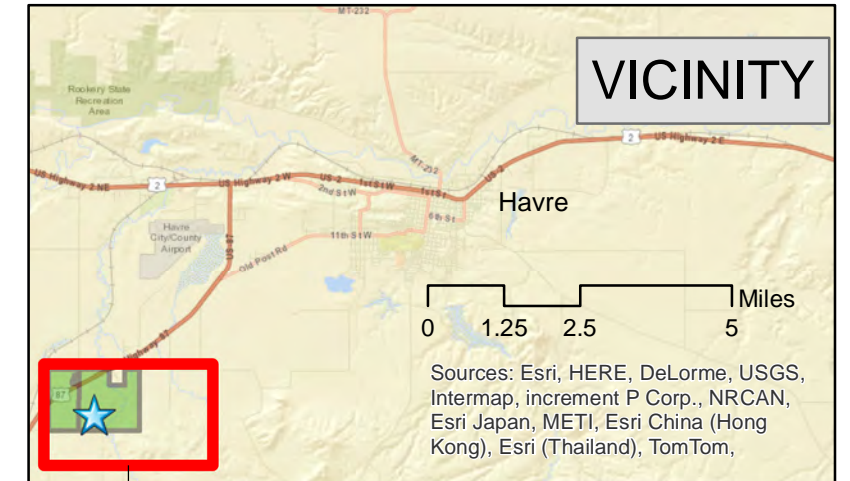


Montana AES NARC Havre



BLG#	NAME
5401	LIVING QTRS APT 9
5402	N DUPLEX APT 7 & 8
5403	SIX UNIT APT
5404	SOILS LAB
5405	SEED HOUSE/GUARD HOUSE
5406	OFFICE
5408	BULL BARN
5409	GARAGE #1
5410	RESEARCH STEER BARN
5411	MACHINE SHED & OLD SHOP
5413	PUMP HOUSE
5414	REC BLG (ROSE ROOM)
5415	WAREHOUSE
5417	EQUIPMENT STORAGE
5418	E GUARD HOUSE
5419	CENTER GUARD HOUSE
5420	W GUARD HOUSE
5421	MULTIPURPOSE
5422	SHOP/OFFICE/BREAKROOM
5423	GARAGE #2
5424	LOWER CALVING SHED
5426	VALVE HOUSE
5429	MACHINE/STORAGE SHED
5430	BEHLEN FEED BIN 6000BU
5433	PESTICIDE STOR/HNDLNG FAC
5434	OFFICE & SEED LAB
5434	SUPPLEMENTAL FEED RESEARCH
5435	2 STEFFES BINS 110 BU EA
5436	SEED BIN(2) 250 BU EA
5437	SEED BIN (2) 250 BU EA
5438	SEED BIN(2) 400 BU EA
5439	SEED BIN (2) 400 BU EA
5461	GRAIN BIN (5) 1512E 2250BU
5462	FUEL TANK 1500 GAL
5463	GRAIN TANK 10 TON
5464	SUPPLY TANK CHEIF 6 TON
5465	SEED BIN 3200 Bu
5467	UPPER CALVING BARN
5468	CATTLE RESEARCH SCALE HOUSE
5469	LIQUID SUPPLIMENT TANK-5500 GAL
5470	GROWSAFE FEEDING BINS/STRUCTURE
5471	FENCE SHED

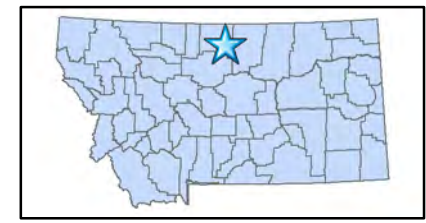
DETAIL



Drawn by Christian Black
 Source: Montana GIS Portal <http://gisportal.msl.mt.gov>
 Facilites Inventory updated June 2015
 Contact CPDC Analyst Matt Hume
 * estimated per superintendent 2015
 CALL 811 BEFORE YOU DIG



48° 29' 53.73"N, 109° 48' 6.89"W
 48.498258, -109.801914
 3710 ASSINNIBOINE ROAD
 HAVRE, MT 59501-8412



MONTANA STATE UNIVERSITY

Montana State University
 Campus Planning, Design & Construction

This product is for informational purposes and may not have been prepared for, or be suitable for legal, engineering or surveying purposes. Users of this information should review or consult the primary data and information sources to ascertain the usability of the information.

Building Pictures of NARC

Photos originally taken 6/2011, verified to be depict buildings' current use and appearance 5/20/2015. Updated photos taken after 2011 are dated.

Pictures ordered by building number except where noted



Sections

1. Building Photos – Interior and Exterior Photos
2. Structures on Site that Are Not Buildings – Bins, Propane Tanks
3. Other Site Issues

Interior and Exterior Photos of Buildings

1. BUILDING PHOTOS



Bldg #5401 – Living Quarters Apt 9



Bldg #5401 – Living Quarters Apt 9



Bldg #5402 – North Duplex Apt 7 & 8



Bldg #5402 – North Duplex Apt 7 & 8



Bldg #5403 – Six Unit Apartment



Bldg #5403 – Six Unit Apartment



Bldg #5404 – Soils Lab



Bldg #5404 – Soils Lab



Bldg #5404 – Soils Lab



Bldg #5405 Guard House (formerly Seed Lab – temporarily used for storage)



Bldg #5405 Guard House (formerly Seed Lab – temporarily used for storage)



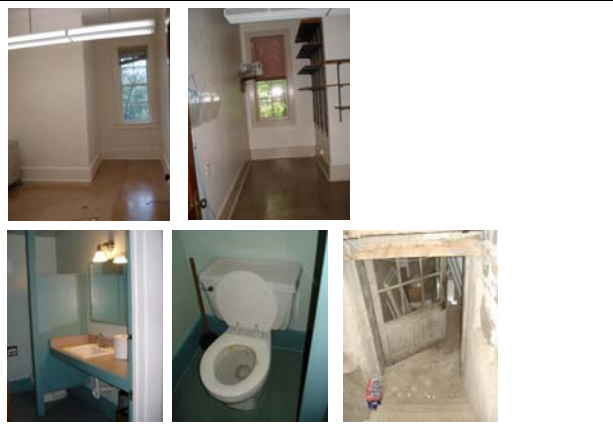
Bldg #5405 Guard House (formerly Seed Lab – temporarily used for storage)



Bldg #5406 – Office Bldg (Former main office – vacant June 2011)



Bldg #5406 – Office Bldg (Former main office – vacant June 2011)



Bldg #5406 – Office Bldg (Former main office – vacant June 2011)



Bldg #5408 – Bull Barn



Bldg #5408 – Bull Barn



Bldg #5408 – Bull Barn



Bldg #5408 – Bull Barn



Bldg #5409 – Garage #1 (Amusement Hall)



Bldg #5409 – Garage #1 (Amusement Hall)



Bldg #5409 – Garage #1 (Amusement Hall)



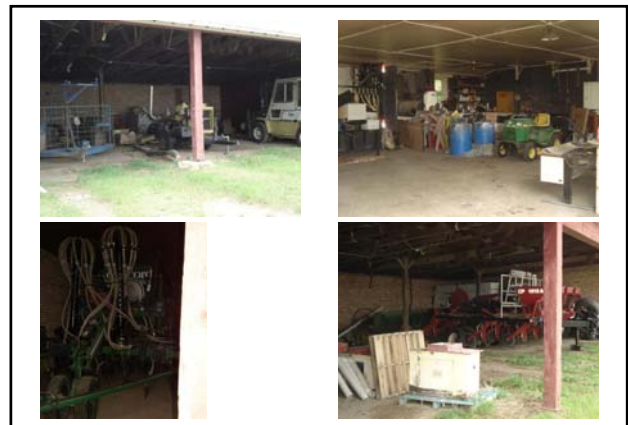
Bldg #5410 – Research Steer Barn (Left barn used for storage, right side used as feed shed for research purposes)



Bldg #5410 – Research Steer Barn



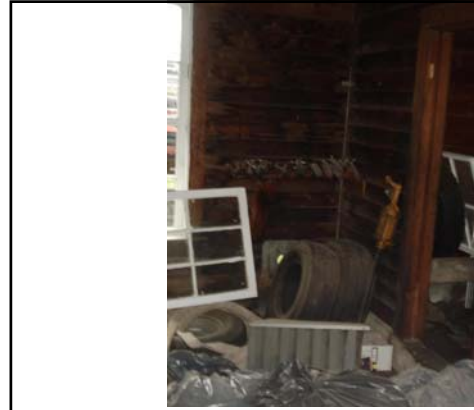
Bldg #5411 – Machine Shed & Old Shop



Bldg #5411 – Machine Shed & Old Shop



Bldg #5413 – Pump House



Bldg #5413 – Pump House



Bldg #5414 – Recreation Building (Rose Room - maintained by hist society)



Bldg #5415 – Warehouse (maintained by hist society)



Bldg #5416 - Hog House – Inactive and Not Maintained



Bldg #5417 – Equipment Storage (Old Sheep Barn)

Photo taken 2013 – Historical renovation work was done



Bldg #5417 – Equipment Storage (Old Sheep Barn)



Photo taken 2013 – Historical renovation work was done

Bldg #5417 – Equipment Storage (Old Sheep Barn)



Bldg #5418 – East Guard House (maintained by hist society)



Bldg #5419 – Center Guard House (maintained by hist society)



Bldg #5420 – West Guard House (maintained by hist society)



Bldg #5421 – Shop / Office / Breakroom (mostly a shop / garage)



Bldg #5421 -Shop / Office / Breakroom



Bldg #5421 -Shop / Office / Breakroom



Bldg #5422 - Garage #2 (used by tenants)



Bldg #5423 - Lower Calving Shed



Bldg #5423 - Lower Calving Shed



Bldg #5423 - Lower Calving Shed



Bldg #5424 – Valve House



Bldg #5426 – Machine Storage Shed



Bldg #5426 – Machine Storage Shed



Bldg #5430 – Pesticide Storage/Handling Facility



Bldg #5430 – Pesticide House



Bldg #5433 – Office & Seed Lab



Bldg #5433 – Office & Seed Lab



Bldg #5433 – Office & Seed Lab



Bldg #5433 – Office & Seed Lab



Bldg #5433 – Office & Seed Lab



Bldg #5433 – Office & Seed Lab



Bldg #5434 – Supplemental Feed Research Building

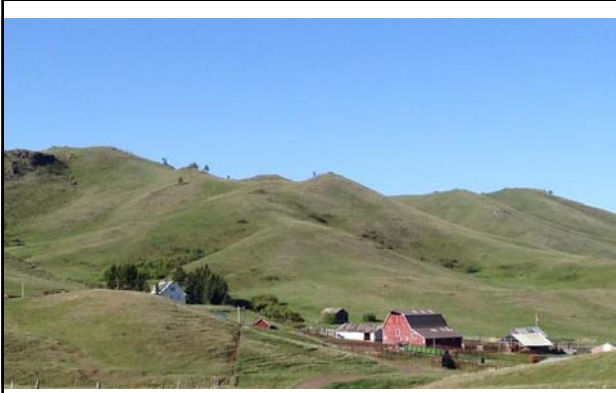


Photo taken 2015

Thackery Ranch (Bldgs #5440 to 5451, first visited 5/2015)



Photo taken 2015

Bldg #5440 Thackery House



Photo taken 2015

Bldg #5441 – Thackery Machine Shed



Photo taken 2015

Bldg #5441 – Thackery Machine Shed



Photo taken 2015

Bldg #5442 – Thackery Garage



Photo taken 2015

Bldg #5442 – Thackery Garage



Photo taken 2015

Bldg #5443 – Thackery Hay Shed



Photo taken 2015

Bldg #5444 – Thackery Pump (Spring) House



Photo taken 2015

Bldg #5446 – Thackery Shop

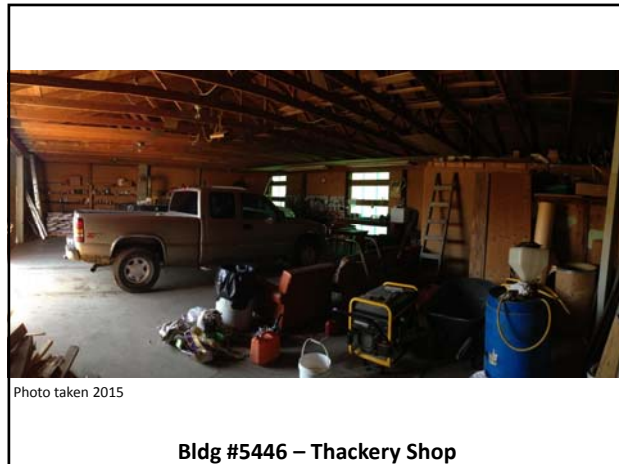


Photo taken 2015

Bldg #5446 – Thackery Shop



Photo taken 2015

Bldg #5445 – Thackery Chicken Coop 1



Photo taken 2015

Bldg #5445 – Thackery Chicken Coop 1

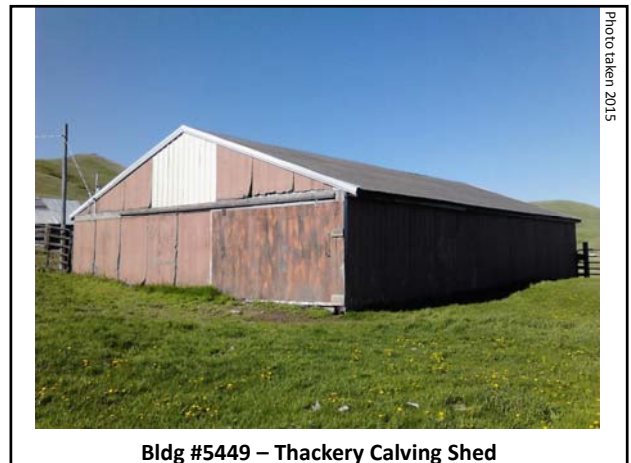
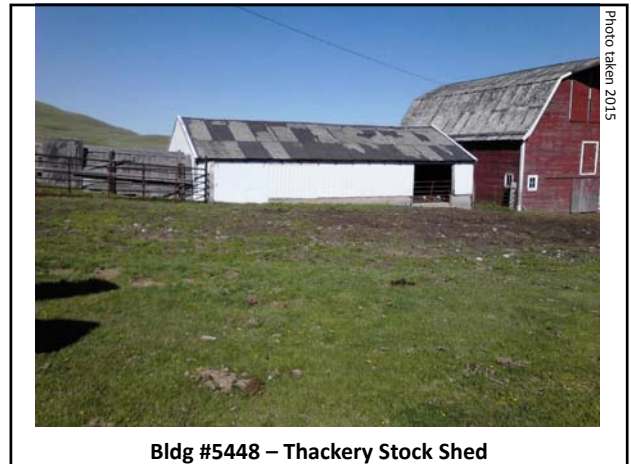
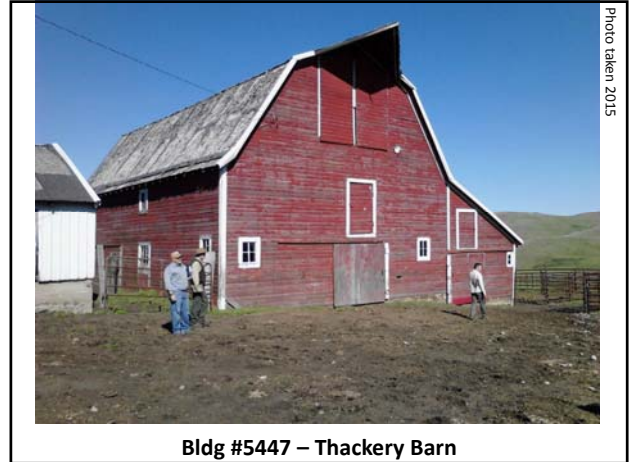




Photo taken 2015

Bldg #5449 – Thackery Calving Shed



Photo taken 2015

Photo taken 2015

Bldg #5450 – Obsolete Thackery Stock Sheds (3 total)



Photo taken 2015

Bldg #5452 – Thackery Granary

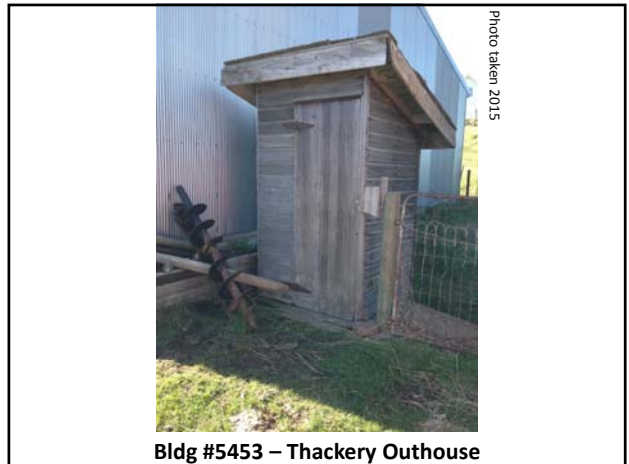


Photo taken 2015

Bldg #5453 – Thackery Outhouse



Photo taken 2015

Bldg #5454 – Thackery Machine Shed Red



Photo taken 2015

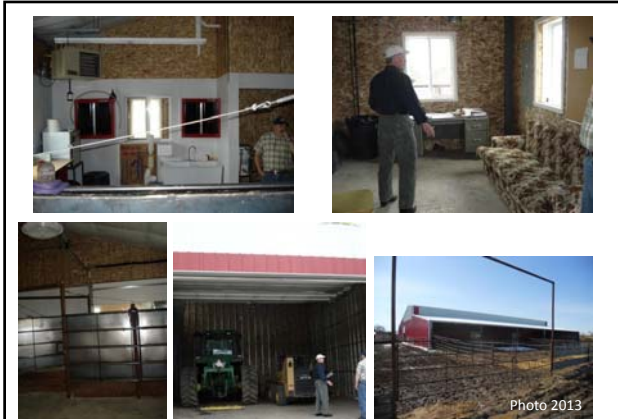
Bldg #5454 – Thackery Machine Shed Red



Bldg #5467 – Upper Calving Barn



Bldg #5467 – Upper Calving Barn



Bldg #5467 – Upper Calving Barn



Site Picture includes Bldg #s - 5467, 5468, 5408 in foreground



Bldg #5468 – Cattle Research Lab



Bldg #5468 – Cattle Research Lab



Bldg #5468 – Cattle Research Lab



Bldg #5468 – Cattle Research Lab



Photo taken 2013 – new building in 2013

New Fence Shed

Bins, Propane Tanks, Other

2. STRUCTURES ON SITE THAT ARE NOT BUILDINGS



Bldg #5429 – 6000 Bu Feed Bin (large bin on left)



Bldg #5435 – two 1100 Bu on left,
Bldg #5461 – four 2250 Bu bin in center
Bldg #5465– 3200 Bu Bin on right



Bldg # 5436, 5437 – Four 250 Bu bins on right,
Bldg #5438, 5439 – Four 400 Bu bins on left



Bldg #5462 – Fuel Tank 1500 Gal



Photo taken 2013

Bldg # 5463 – left,
5464 on right



Grow Safe Research Feeding Bins & Structure



Grow Safe Research Feeding Bins & Structure

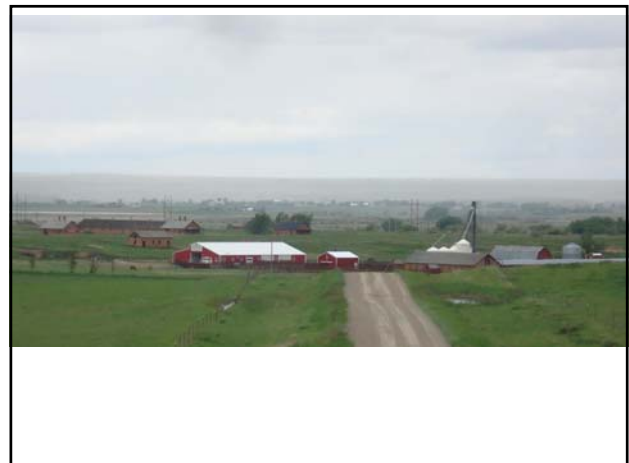
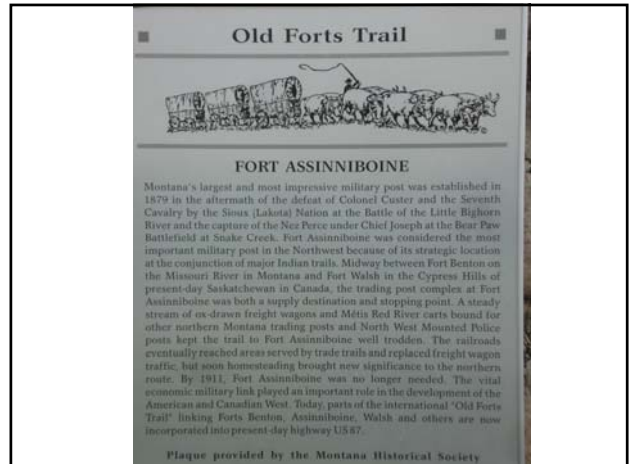
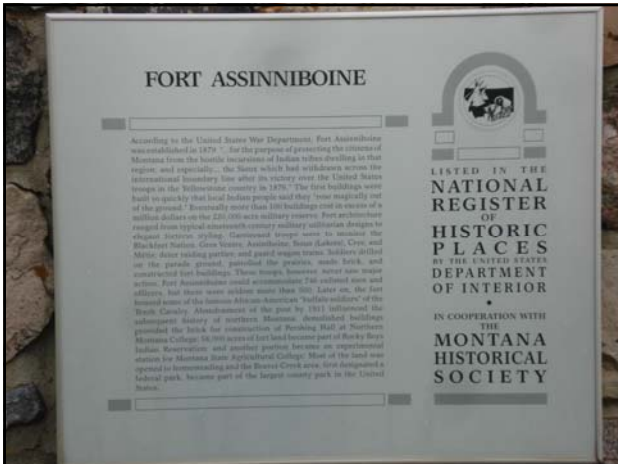


Photo taken 2013
Moved from historic area to new office building between 2011-2013

Weather Station



Flag Pole





New bridge installed between 2013-2015



New Culverts installed between 2013-2015

Fencing, drainage issues

3. OTHER SITE ISSUES



Road needs new gravel throughout site