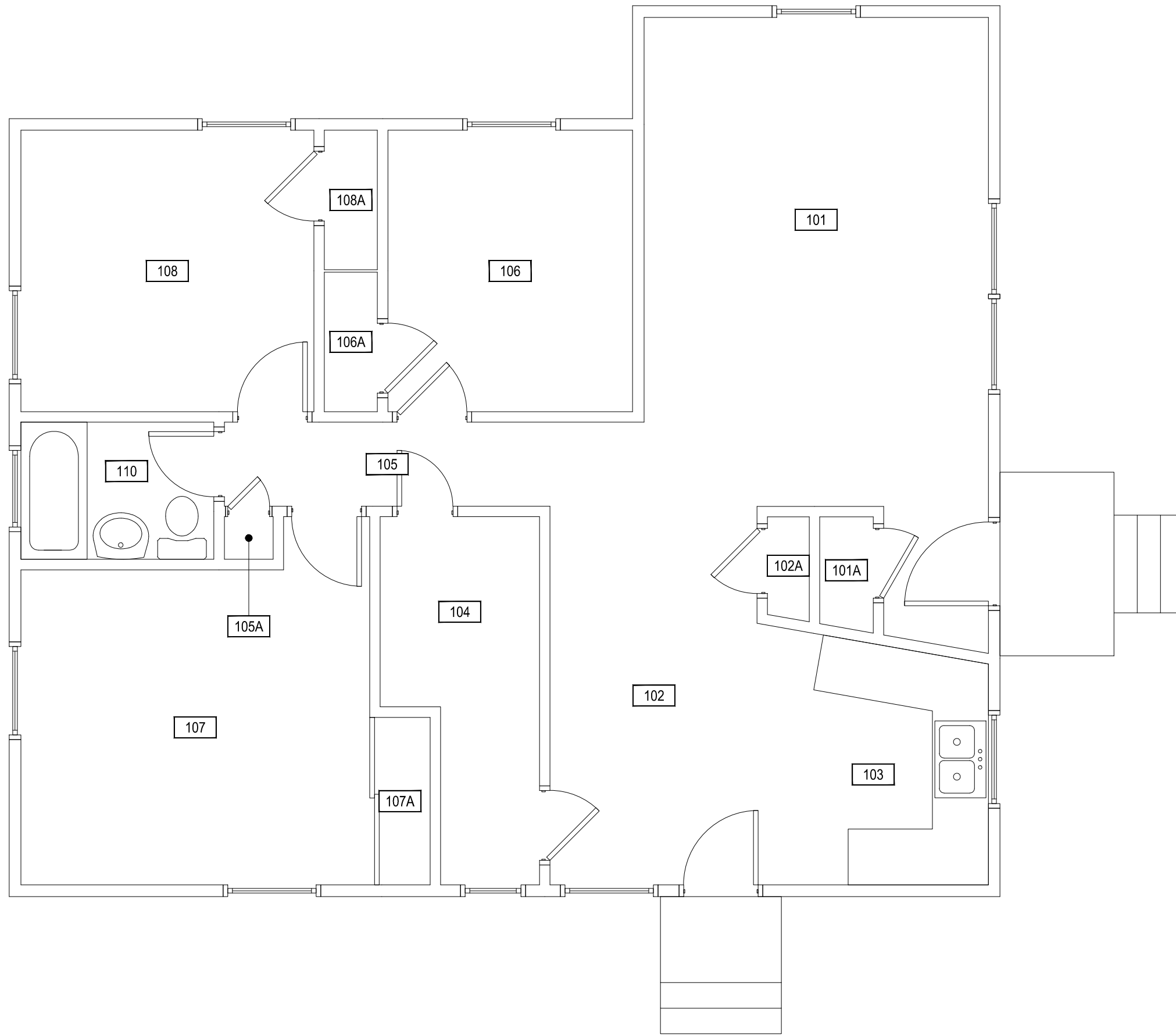


Oct 15, 2012 - 10:40am - 537_A1.dwg
H:\Faculty Housing\Faculty Court-25\Building Plan - Book Copy\



1

FACULTY COURT - 25 - FIRST LEVEL

SCALE: 1/4" = 1'



M MONTANA
STATE UNIVERSITY
FACILITIES PLANNING,
DESIGN & CONSTRUCTION
BOZEMAN, MONTANA
PHONE: 406.994.4131 FAX: 406.994.6572

INDEX #
56
BUILDING #
537