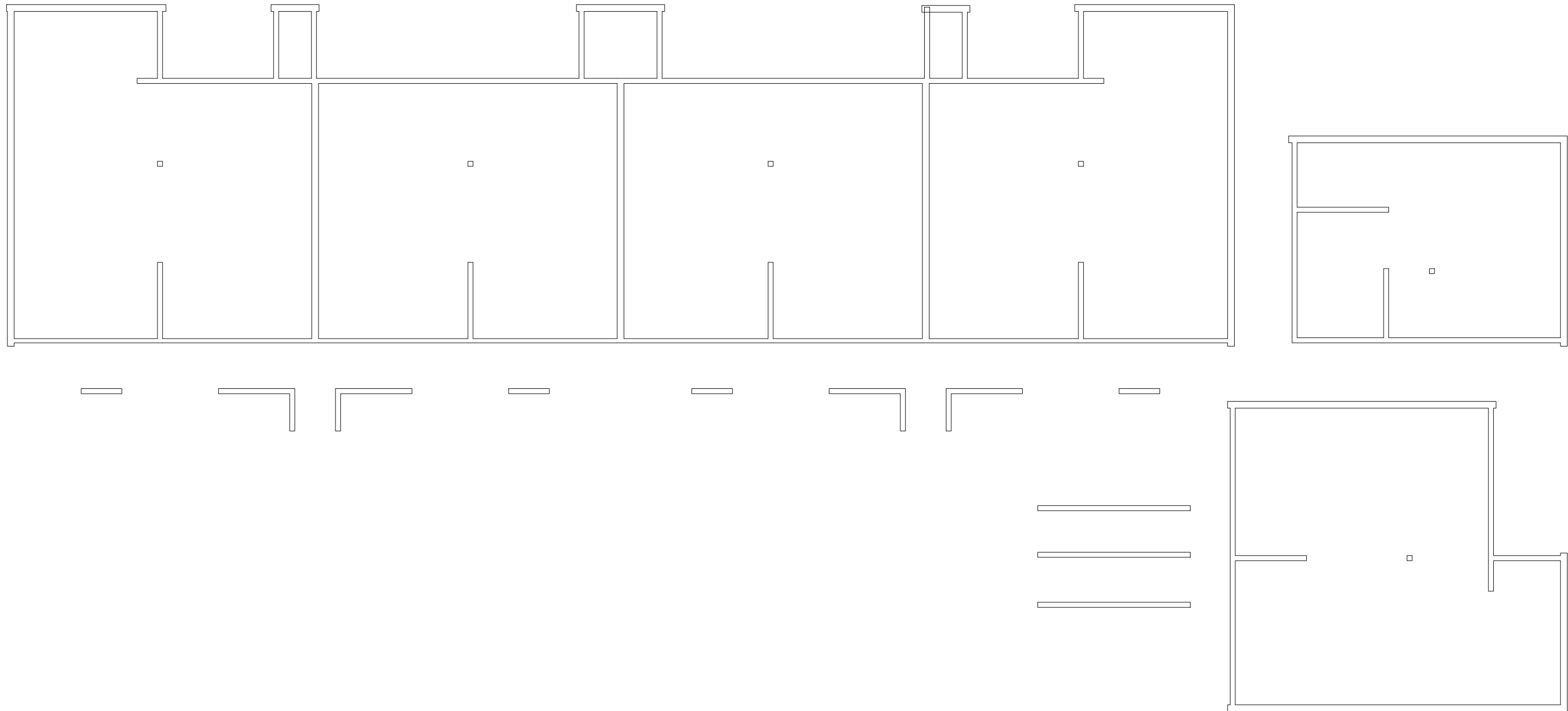


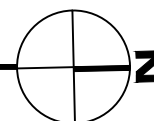
Sep 20, 2013 - 10:56am - 531108-AB.dwg
H:\Family Housing\Paisley Court Flats\Building Plan - Book Copy\



1

PAISLEY COURT FLATS - BASEMENT LEVEL

SCALE: 1" = 10'



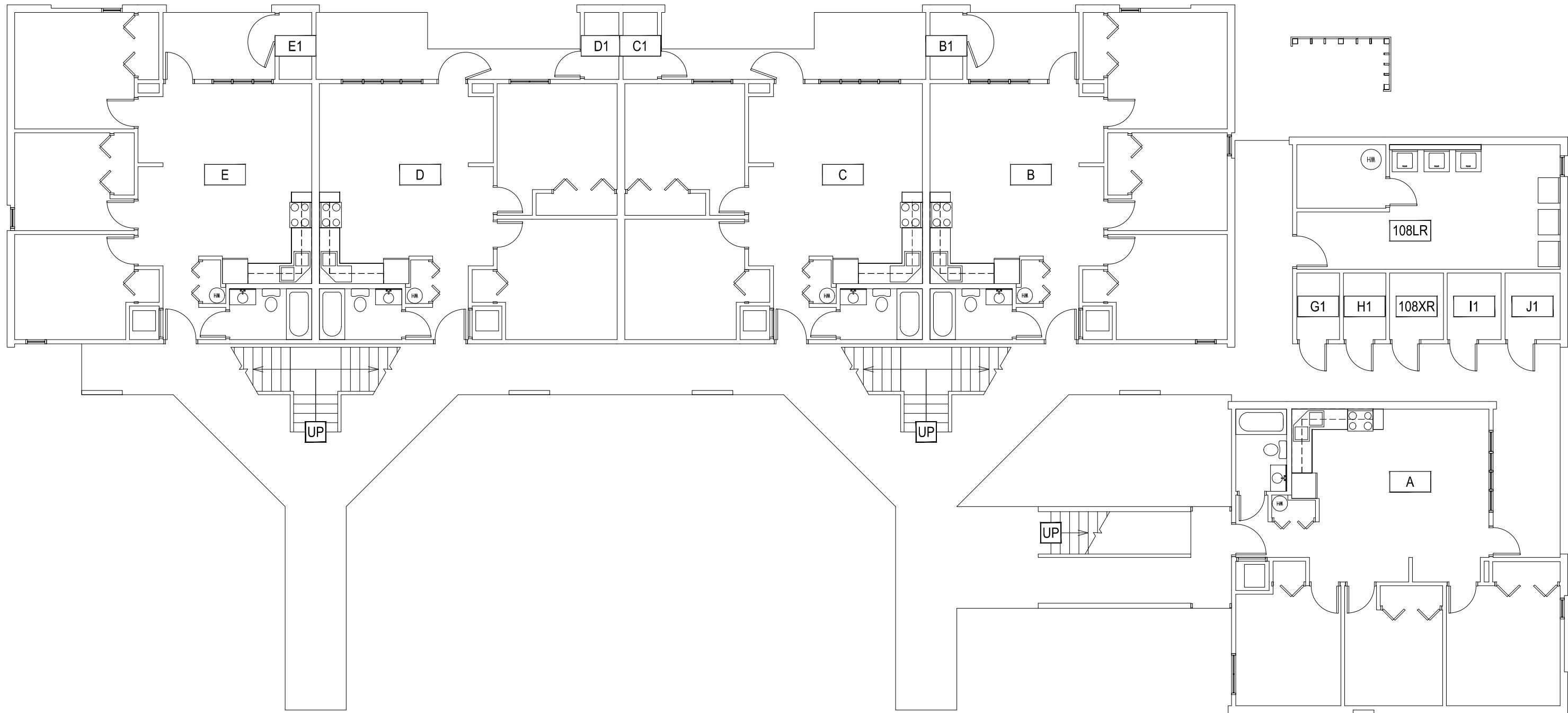
M MONTANA
STATE UNIVERSITY
FACILITIES PLANNING,
DESIGN & CONSTRUCTION
BOZEMAN, MONTANA
PHONE: 406.994.4131 FAX: 406.994.6572

INDEX #

39

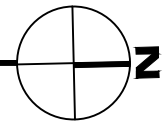
BUILDING #

531108



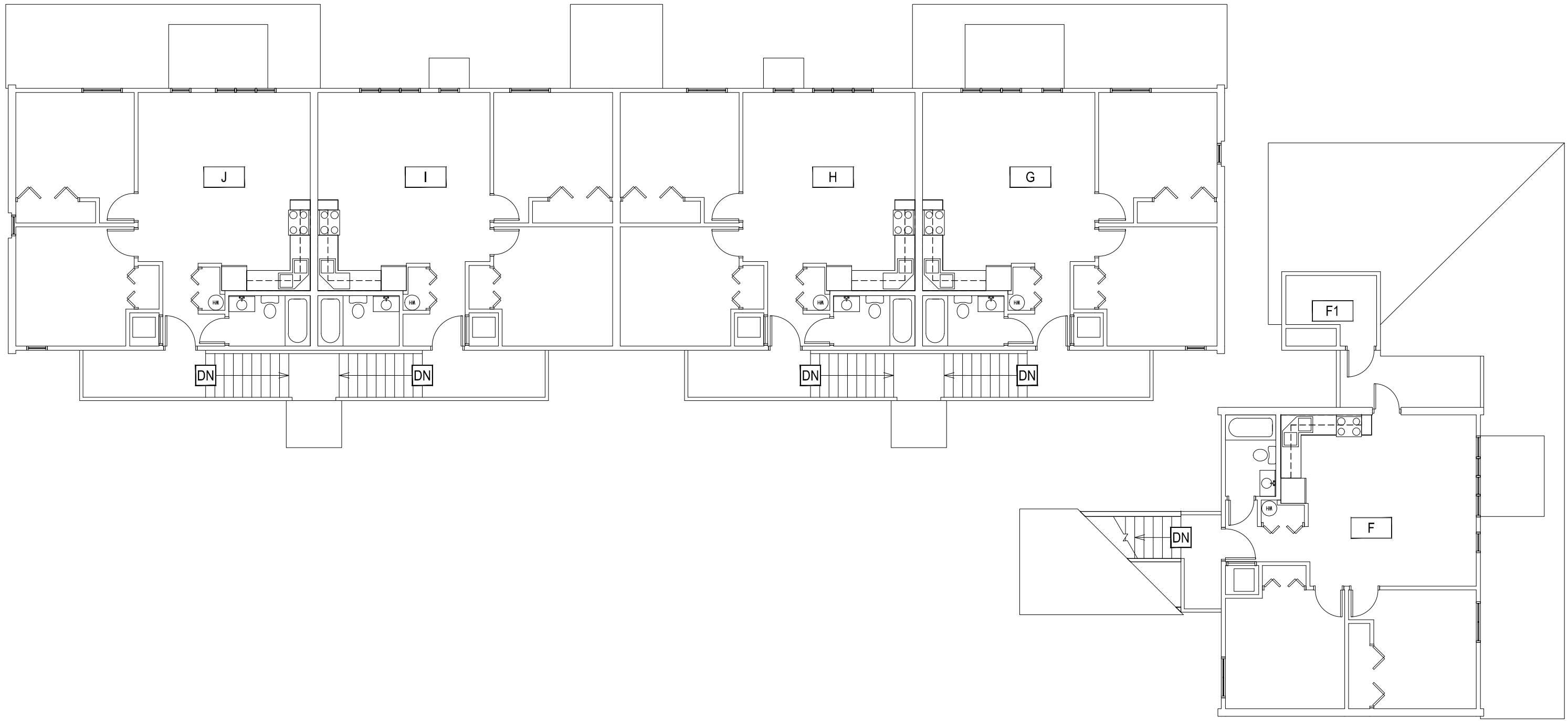
Sep 20, 2013 - 10:56am - 531108-A1.dwg
 C:\Users\gary.gramer\appdata\local\temp\AcPublish_8400\

1
PAISLEY COURT FLATS - FIRST LEVEL
 SCALE: 1" = 10'



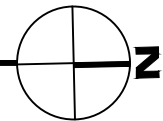
MONTANA STATE UNIVERSITY FACILITIES PLANNING, DESIGN & CONSTRUCTION BOZEMAN, MONTANA <small>PHONE: 406.994.4131 FAX: 406.994.6572</small>	INDEX #
	39
	BUILDING #
	531108

Sep 20, 2013 - 10:56am - 531108-A2.dwg
C:\Users\gary.gramer\appdata\local\temp\AcPublish_8400\



1

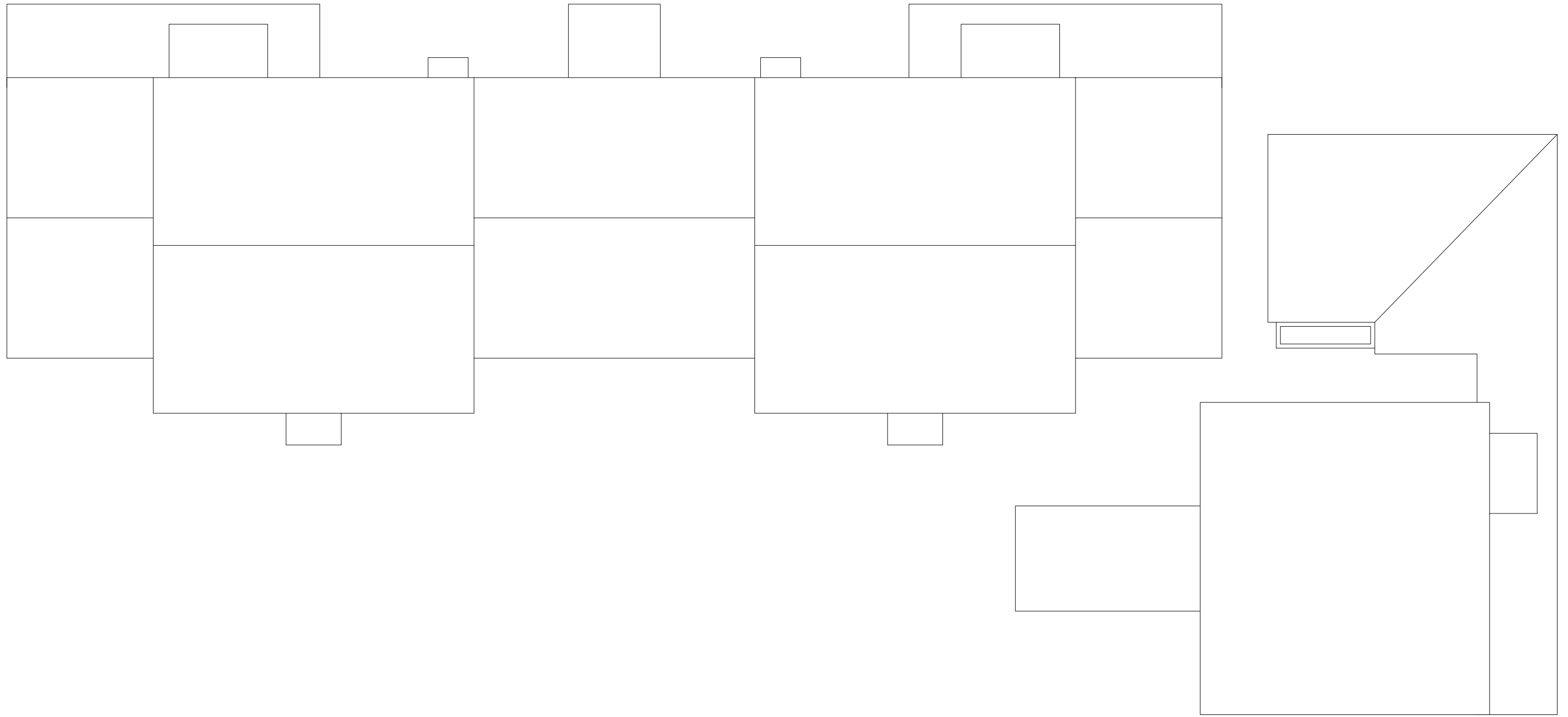
PAISLEY COURT FLATS - SECOND LEVEL
SCALE: 1" = 10'



M MONTANA STATE UNIVERSITY
FACILITIES PLANNING,
DESIGN & CONSTRUCTION
BOZEMAN, MONTANA
PHONE: 406.994.4131 FAX: 406.994.6572

INDEX # **39**
BUILDING # **531108**

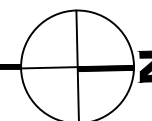
Sep 20, 2013 - 10:56am - 531108-AR.dwg
H:\Family Housing\Paisley Court Flats\Building Plan - Book Copy\



1

PAISLEY COURT FLATS - ROOF LEVEL

SCALE: 1" = 10'



M MONTANA
STATE UNIVERSITY
FACILITIES PLANNING,
DESIGN & CONSTRUCTION
BOZEMAN, MONTANA
PHONE: 406.994.4131 FAX: 406.994.6572

INDEX #
39
BUILDING #
531108