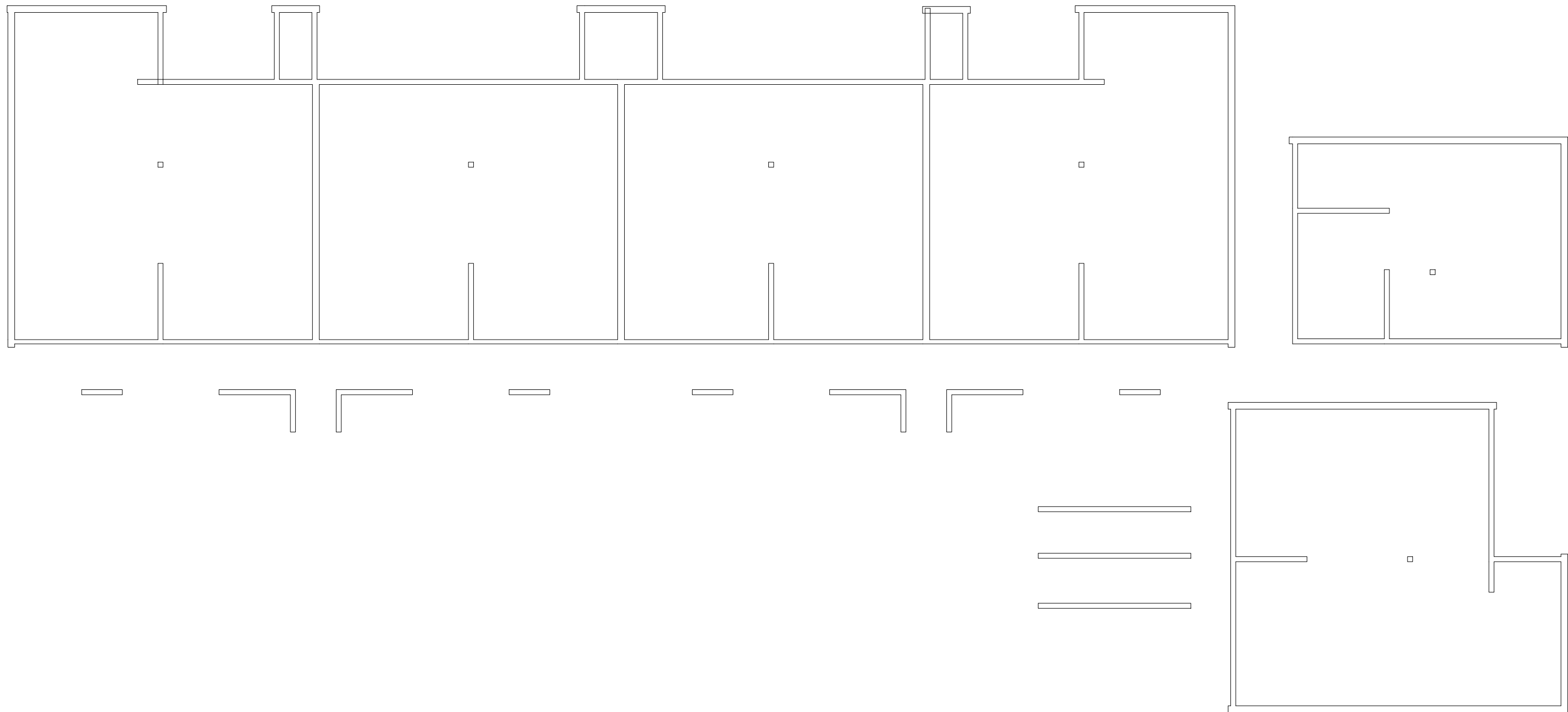


Sep 20, 2013 - 10:21am - 531104-AB.dwg  
H:\Family Housing\Paisley Court Flats\Building Plan - Book Copy\



1

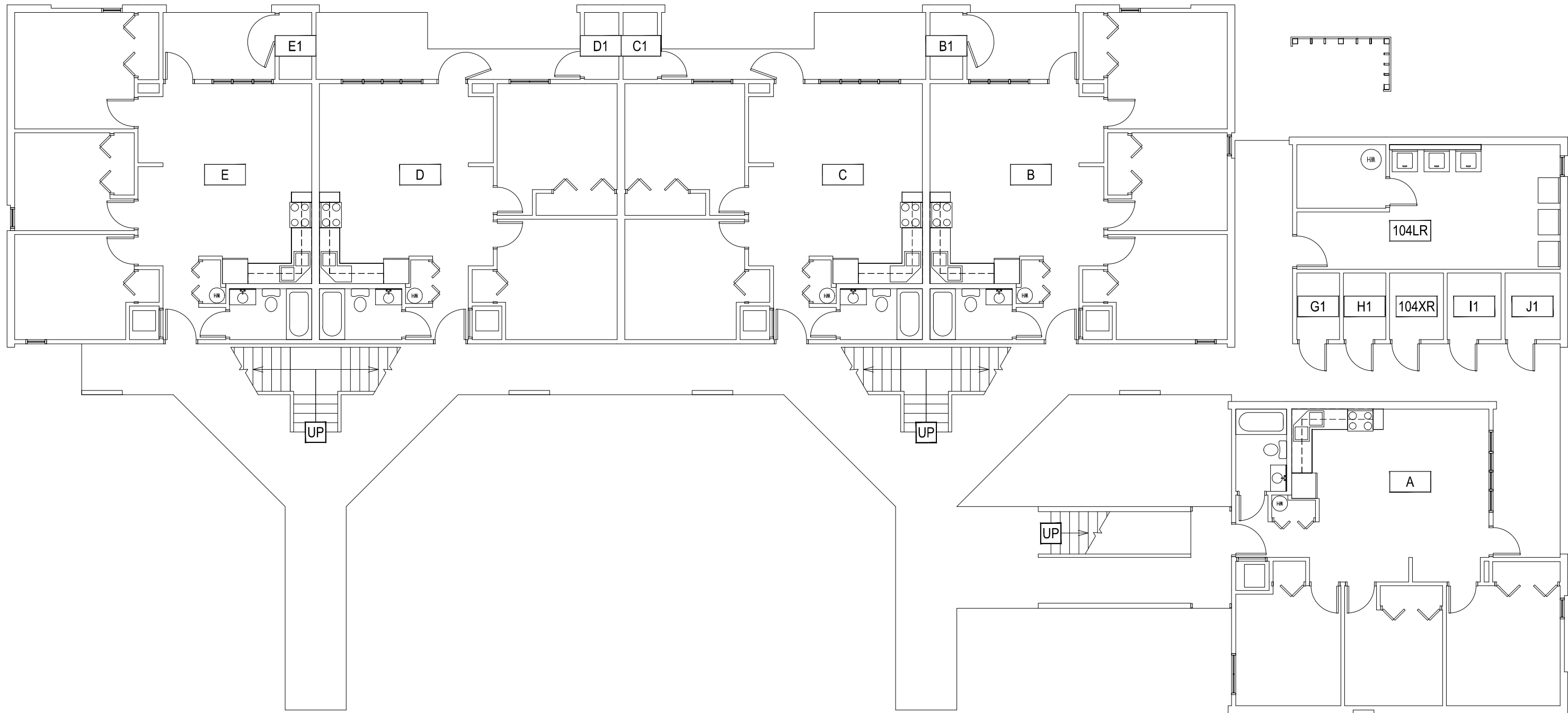
PAISLEY COURT FLATS - BASEMENT LEVEL

SCALE: 1" = 10'



**M** MONTANA  
STATE UNIVERSITY  
FACILITIES PLANNING,  
DESIGN & CONSTRUCTION  
BOZEMAN, MONTANA  
PHONE: 406.994.4131 FAX: 406.994.6572

INDEX #  
**39**  
BUILDING #  
**531104**



Sep 20, 2013 - 10:21am - 531104-A1.dwg  
 C:\Users\gary.gramer\appdata\local\temp\AcPublish\_8400\

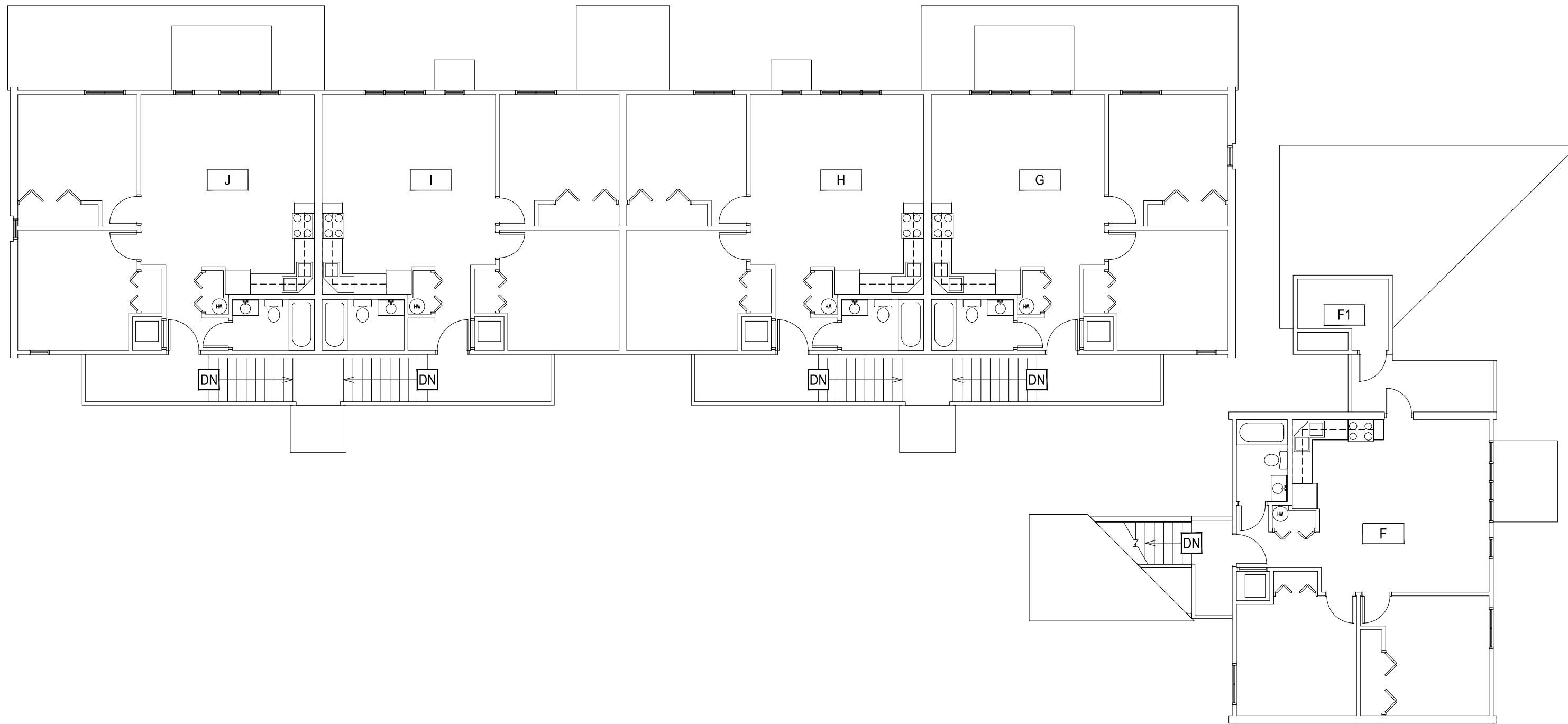
1
**PAISLEY COURT FLATS - FIRST LEVEL**  
 SCALE: 1" = 10'



**M MONTANA STATE UNIVERSITY**  
 FACILITIES PLANNING,  
 DESIGN & CONSTRUCTION  
 BOZEMAN, MONTANA  
 PHONE: 406.994.4131 FAX: 406.994.6572

**INDEX #**  
39  
**BUILDING #**  
531104

Sep 20, 2013 - 10:21am - 531104-A2.dwg  
C:\Users\gary.gramer\appdata\local\temp\AcPublish\_8400\



1

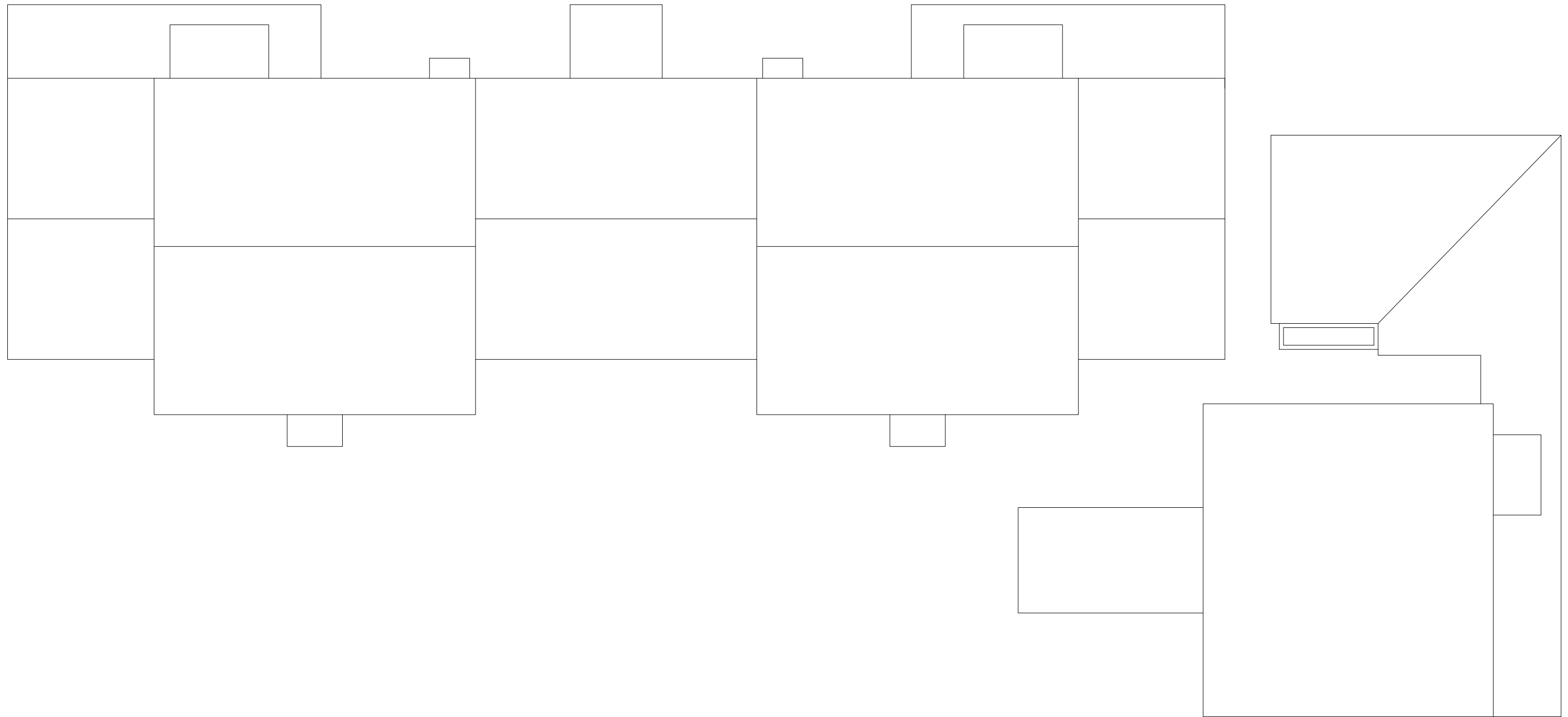
**PAISLEY COURT FLATS - SECOND LEVEL**  
SCALE: 1" = 10'



**M** MONTANA STATE UNIVERSITY  
FACILITIES PLANNING,  
DESIGN & CONSTRUCTION  
BOZEMAN, MONTANA  
PHONE: 406.994.4131 FAX: 406.994.6572

INDEX # **39**  
BUILDING # **531104**

Sep 20, 2013 - 10:21am - 531104-AR.dwg  
H:\Family Housing\Paisley Court Flats\Building Plan - Book Copy\



1

**PAISLEY COURT FLATS - ROOF LEVEL**  
SCALE: 1" = 10'



**M** MONTANA  
STATE UNIVERSITY  
FACILITIES PLANNING,  
DESIGN & CONSTRUCTION  
BOZEMAN, MONTANA  
PHONE: 406.994.4131 FAX: 406.994.6572

INDEX #  
**39**  
BUILDING #  
**531104**