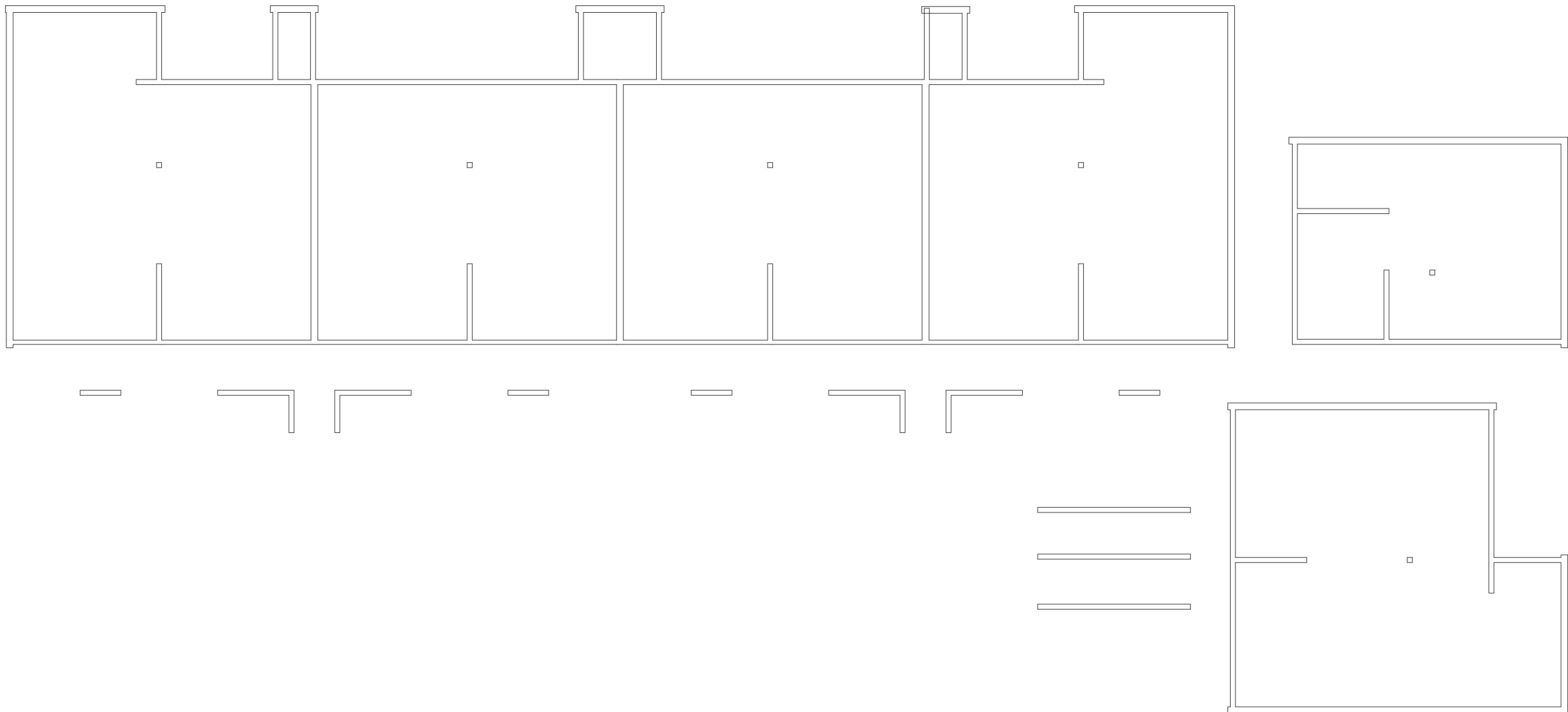


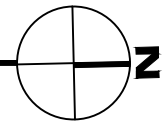
Sep 20, 2013 - 10:18am - 531103-AB.dwg
H:\Family Housing\Paisley Court Flats\Building Plan - Book Copy\



1

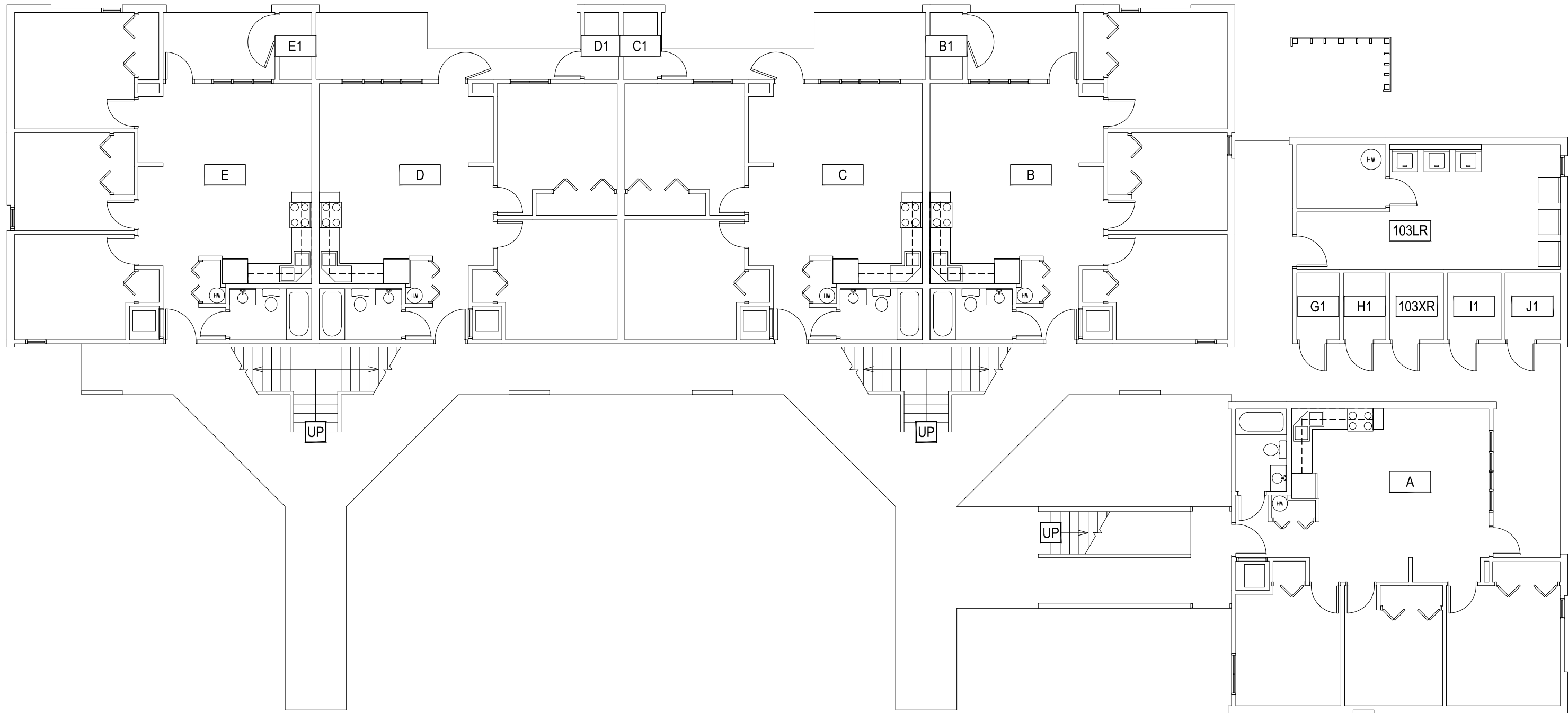
PAISLEY COURT FLATS - BASEMENT LEVEL

SCALE: 1" = 10'



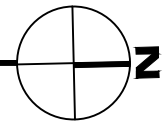
M MONTANA
STATE UNIVERSITY
FACILITIES PLANNING,
DESIGN & CONSTRUCTION
BOZEMAN, MONTANA
PHONE: 406.994.4131 FAX: 406.994.6572

INDEX #
39
BUILDING #
531103



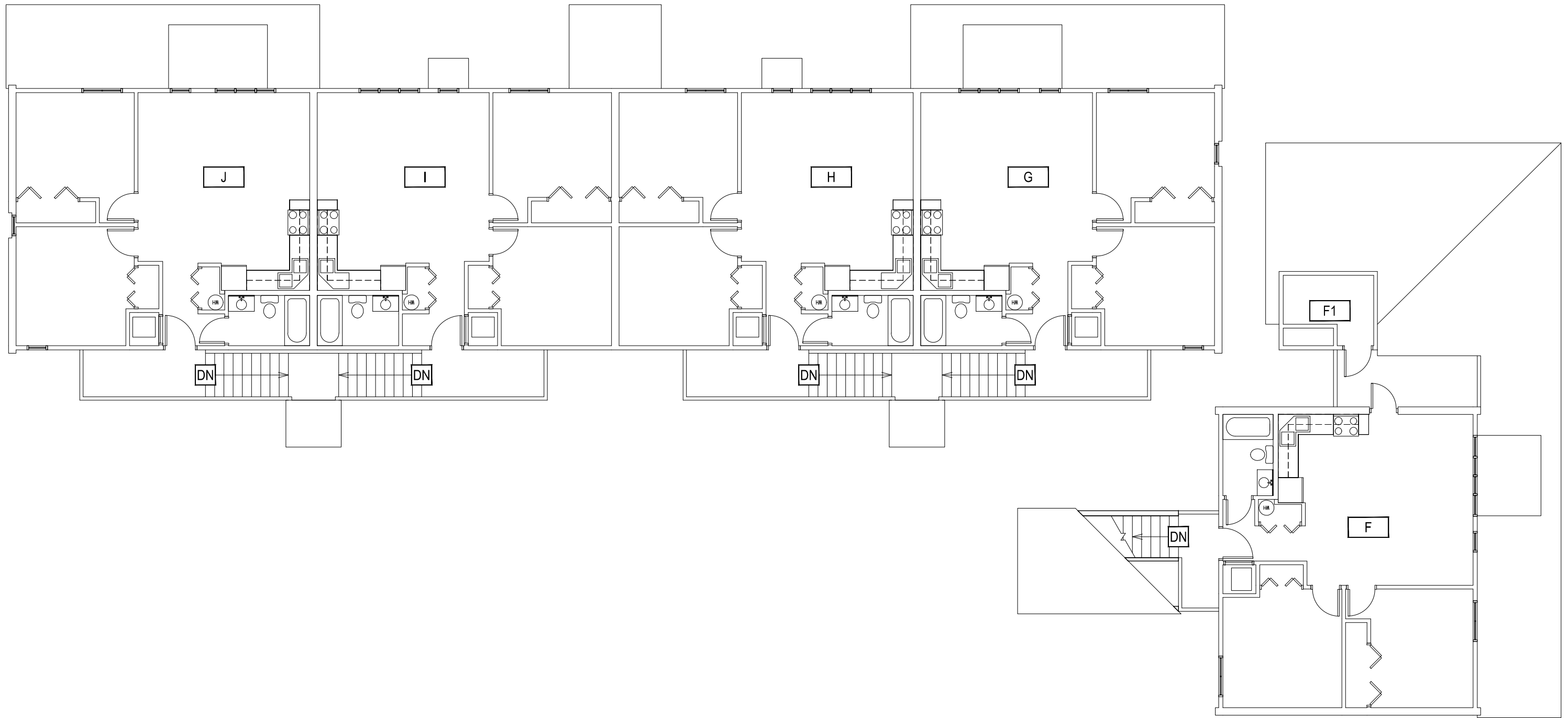
Sep 20, 2013 - 10:18am - 531103-A1.dwg
 C:\Users\gary.gramer\appdata\local\temp\AcPublish_8400\

1
PAISLEY COURT FLATS - FIRST LEVEL
 SCALE: 1" = 10'



M MONTANA STATE UNIVERSITY
 FACILITIES PLANNING,
 DESIGN & CONSTRUCTION
 BOZEMAN, MONTANA
 PHONE: 406.994.4131 FAX: 406.994.6572

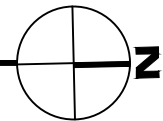
INDEX # **39**
 BUILDING # **531103**



Sep 20, 2013 - 10:18am - 531103-A2.dwg
 C:\Users\gary.gramer\appdata\local\temp\AcPublish_8400\

1

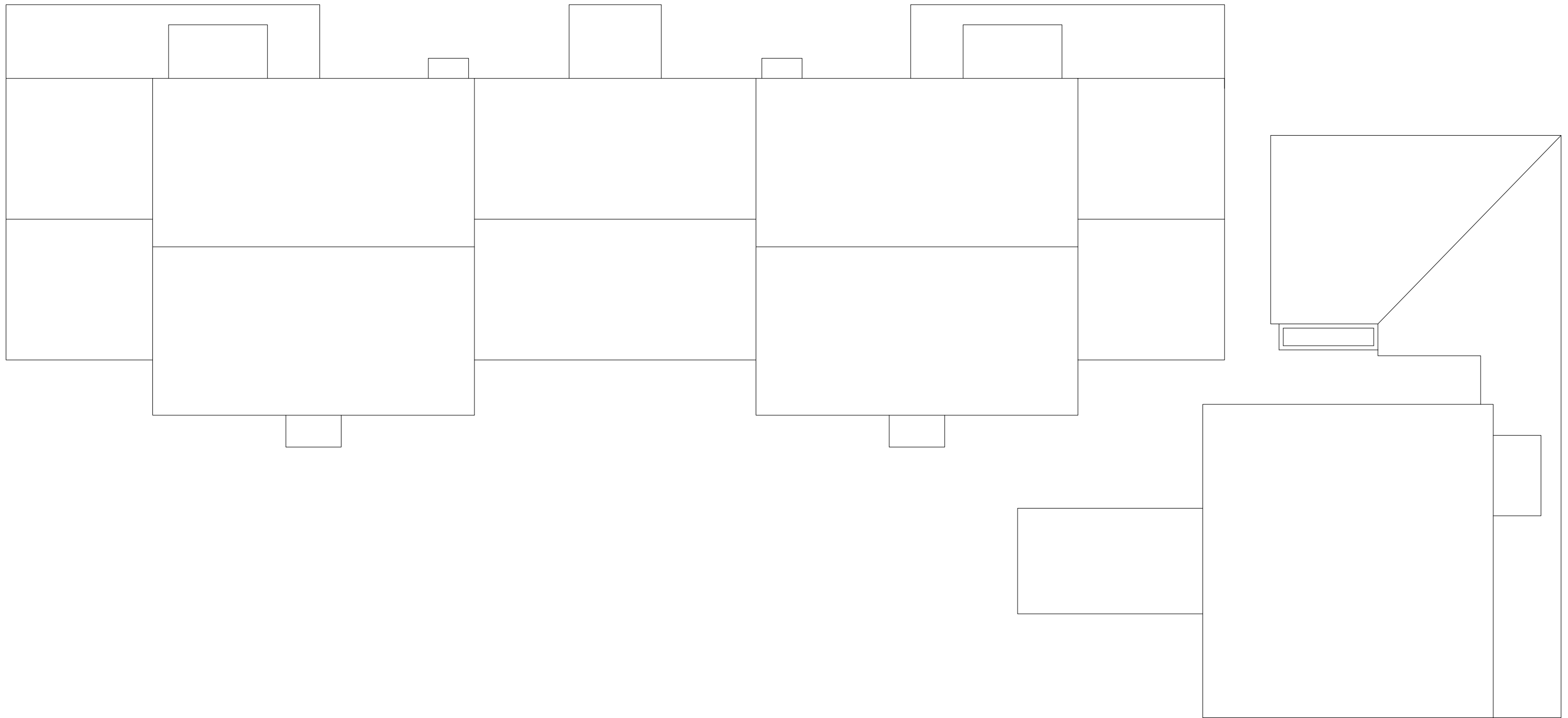
PAISLEY COURT FLATS - SECOND LEVEL
 SCALE: 1" = 10'




MONTANA STATE UNIVERSITY
 FACILITIES PLANNING,
 DESIGN & CONSTRUCTION
 BOZEMAN, MONTANA
 PHONE: 406.994.4131 FAX: 406.994.6572

INDEX #
39
BUILDING #
531103

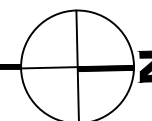
Sep 20, 2013 - 10:18am - 531103-AR.dwg
H:\Family Housing\Paisley Court Flats\Building Plan - Book Copy\



1

PAISLEY COURT FLATS - ROOF LEVEL

SCALE: 1" = 10'



M MONTANA
STATE UNIVERSITY
FACILITIES PLANNING,
DESIGN & CONSTRUCTION
BOZEMAN, MONTANA
PHONE: 406.994.4131 FAX: 406.994.6572

INDEX #

39

BUILDING #

531103