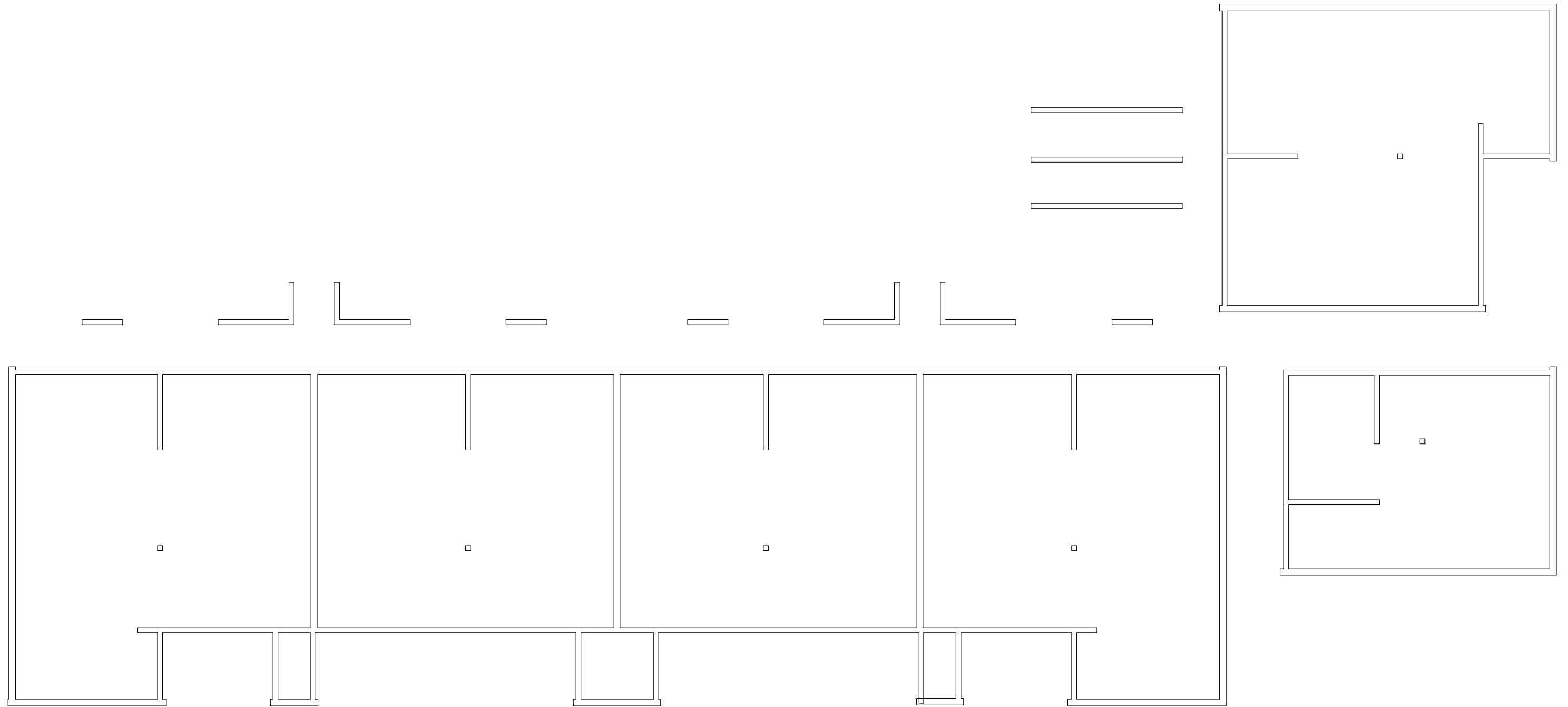


Sep 20, 2013 - 9:33am - 531102-AB.dwg  
H:\Family Housing\Paisley Court Flats\Building Plan - Book Copy\



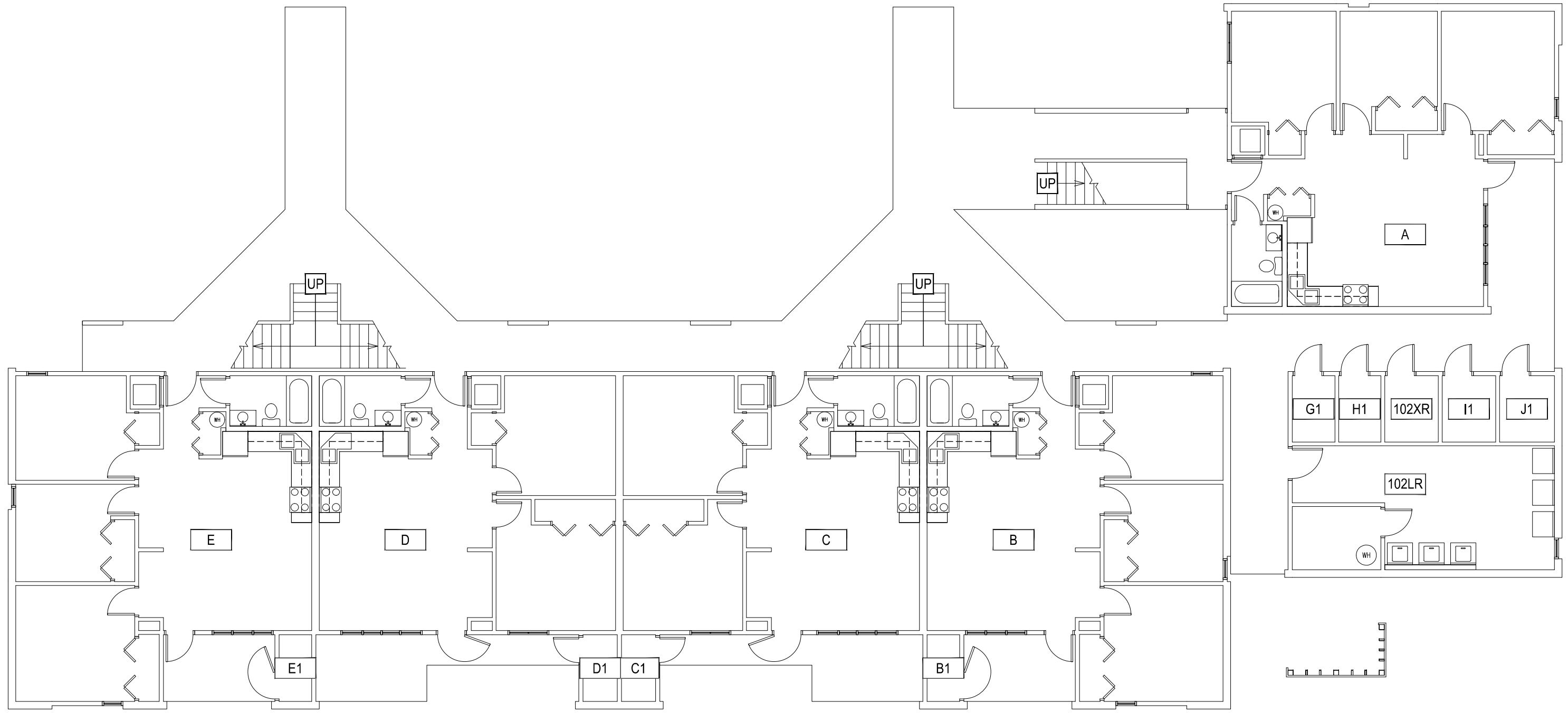
1

**PAISLEY COURT FLATS - BASEMENT LEVEL**  
SCALE: 1" = 10'



**M** MONTANA  
STATE UNIVERSITY  
FACILITIES PLANNING,  
DESIGN & CONSTRUCTION  
BOZEMAN, MONTANA  
PHONE: 406.994.4131 FAX: 406.994.6572

INDEX #  
**39**  
BUILDING #  
**531102**

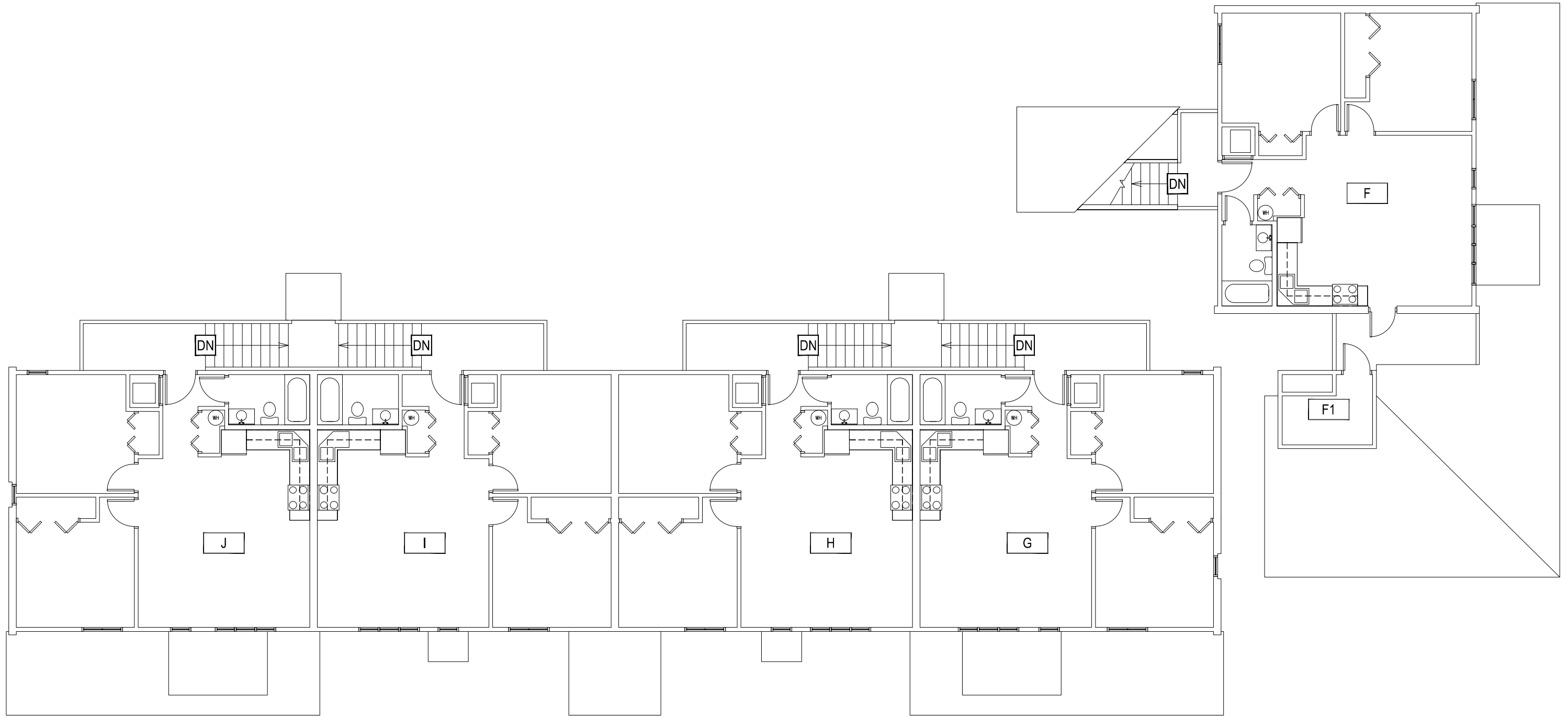


Sep 20, 2013 - 9:33am - 531102-1.dwg  
 C:\Users\gary.gramer\appdata\local\temp\AcPublish\_8400\

**1** PAISLEY COURT FLATS - FIRST LEVEL  
 SCALE: 1" = 10'



 <b>MONTANA</b> STATE UNIVERSITY FACILITIES PLANNING, DESIGN & CONSTRUCTION BOZEMAN, MONTANA PHONE: 406.994.4131 FAX: 406.994.6572	INDEX #
	<b>39</b>
	BUILDING #
	<b>531102</b>



Sep 20, 2013 - 9:33am - 531102-A2.dwg  
 C:\Users\gary.gramer\appdata\local\temp\AcPublish\_8400

1

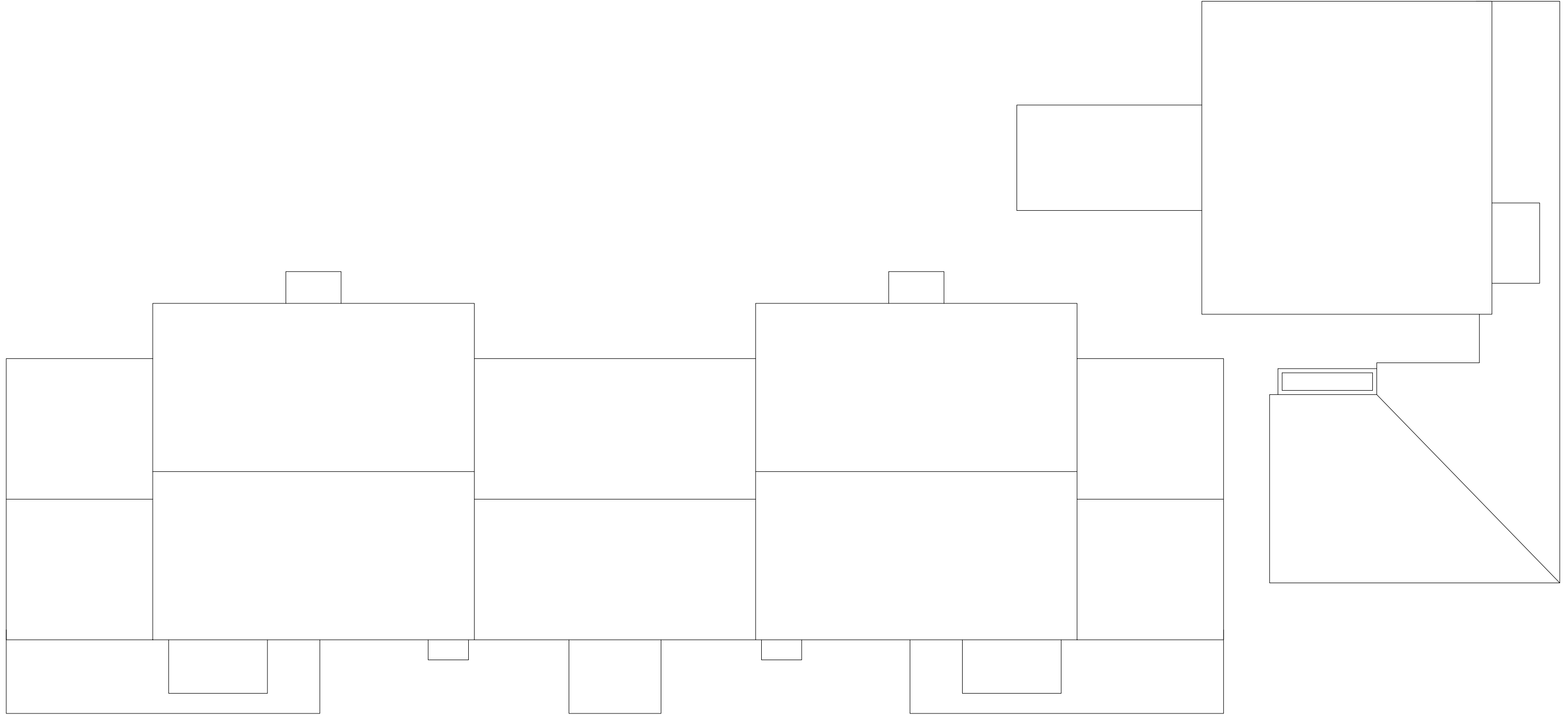
**PAISLEY COURT FLATS - SECOND LEVEL**  
 SCALE: 1" = 10'




**MONTANA**  
 STATE UNIVERSITY  
 FACILITIES PLANNING,  
 DESIGN & CONSTRUCTION  
 BOZEMAN, MONTANA  
 PHONE: 406.994.4131 FAX: 406.994.6572

INDEX #  
**39**  
 BUILDING #  
**531102**

Sep 20, 2013 - 9:33am - 531102-AR.dwg  
H:\Family Housing\Paisley Court Flats\Building Plan - Book Copy\



1 PAISLEY COURT FLATS - ROOF LEVEL  
SCALE: 1" = 10'



**M** MONTANA  
STATE UNIVERSITY  
FACILITIES PLANNING,  
DESIGN & CONSTRUCTION  
BOZEMAN, MONTANA  
PHONE: 406.994.4131 FAX: 406.994.6572

INDEX #  
**39**  
BUILDING #  
**531102**