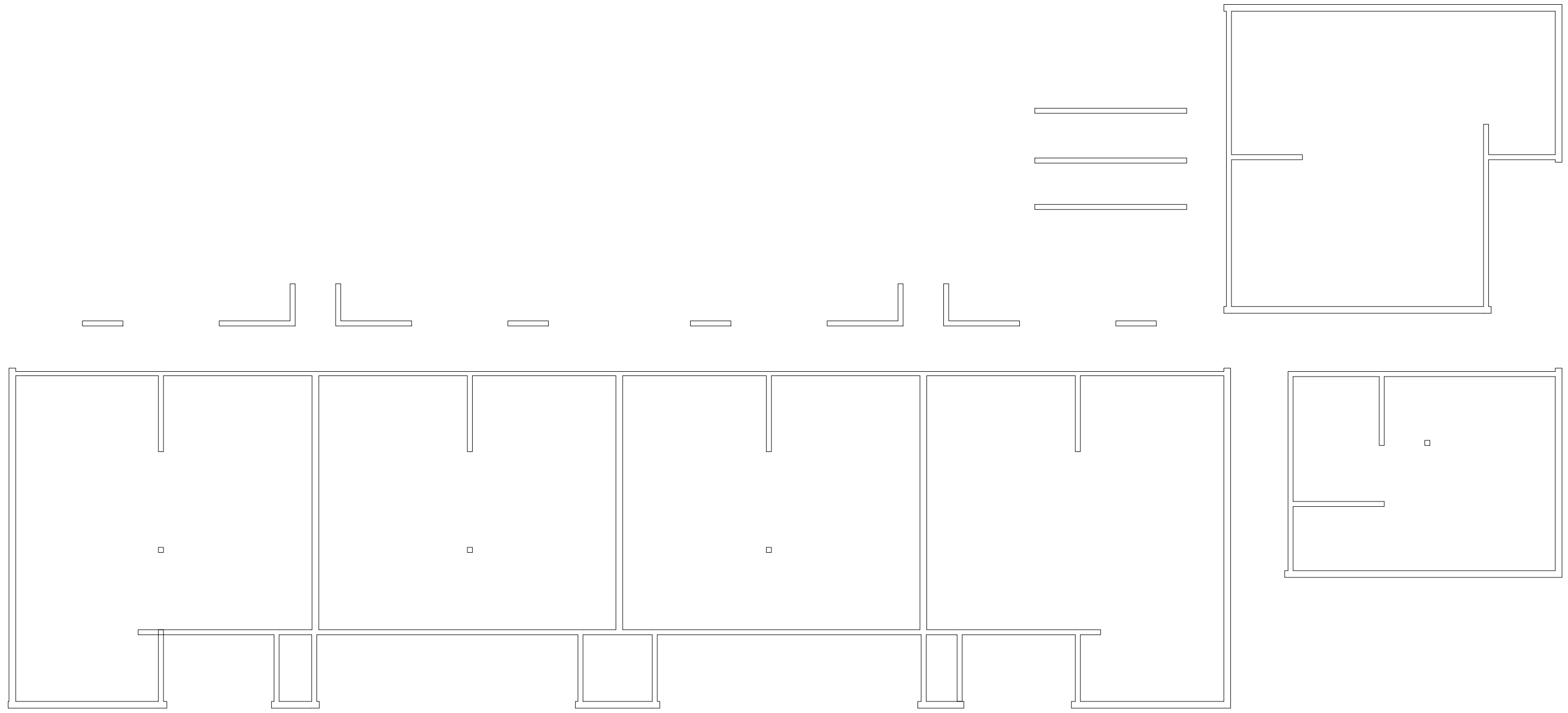


Sep 20, 2013 - 9:30am - 531101-AB.dwg
H:\Family Housing\Paisley Court Flats\Building Plan - Book Copy\



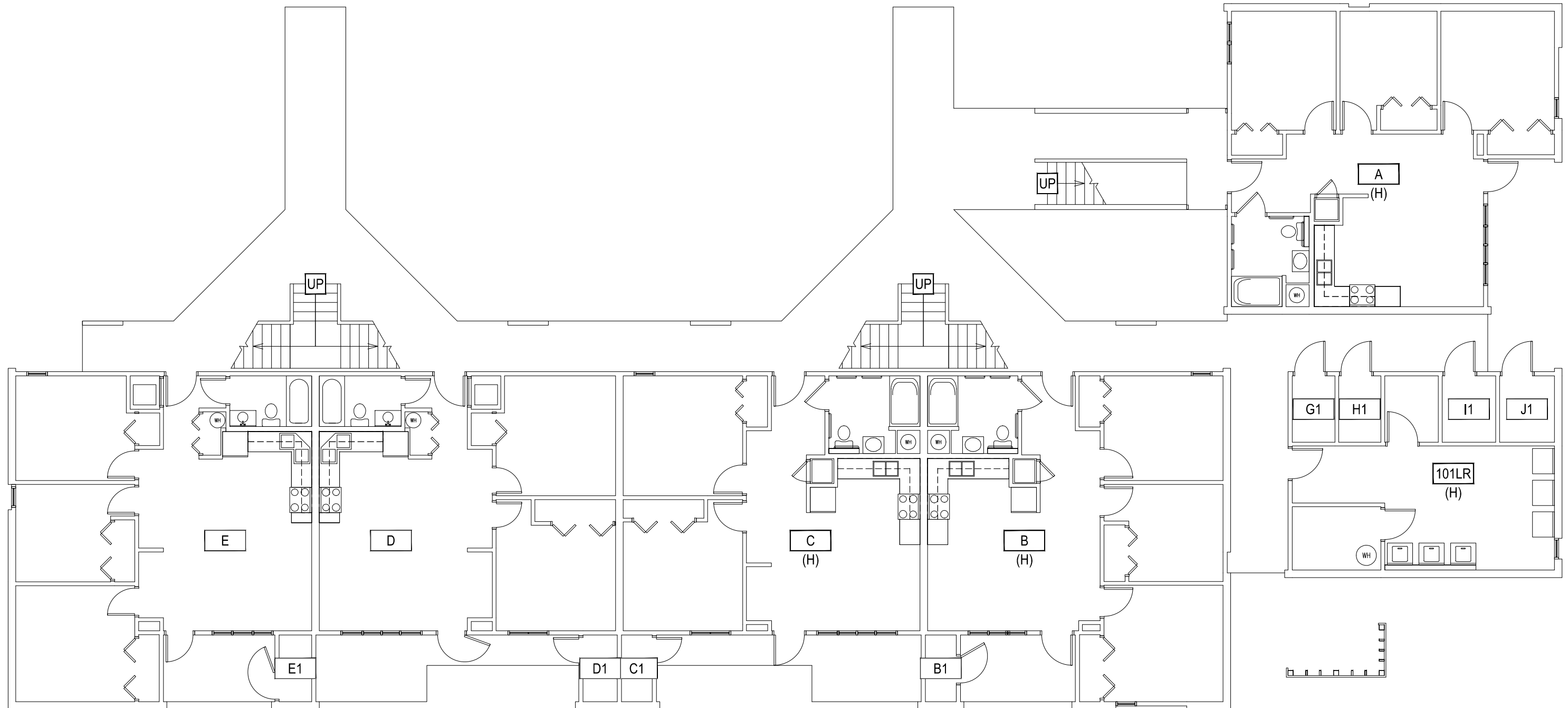
1 PAISLEY COURT FLATS - BASEMENT LEVEL
SCALE: 1" = 10'



M MONTANA
STATE UNIVERSITY
FACILITIES PLANNING,
DESIGN & CONSTRUCTION
BOZEMAN, MONTANA
PHONE: 406.994.4131 FAX: 406.994.6572

INDEX #
39
BUILDING #
531101

Sep 20, 2013 - 9:30am - 531101-1.dwg
C:\Users\gary.gramer\appdata\local\temp\AcPublish_8400\



1

PAISLEY COURT FLATS - FIRST LEVEL

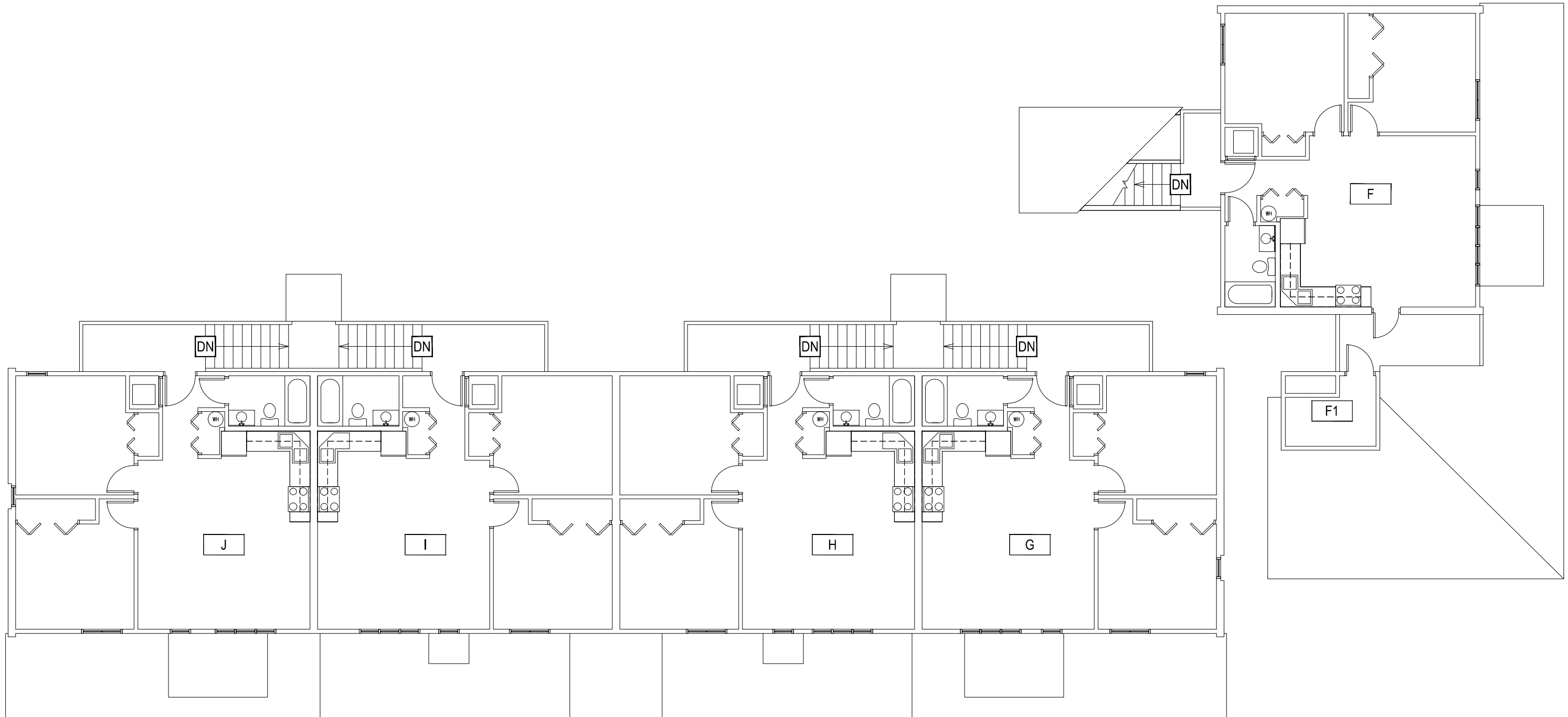
SCALE: 1" = 10'



M MONTANA STATE UNIVERSITY
FACILITIES PLANNING,
DESIGN & CONSTRUCTION
BOZEMAN, MONTANA
PHONE: 406.994.4131 FAX: 406.994.6572

INDEX #
39
BUILDING #
531101

Sep 20, 2013 - 9:30am - 531101-A2.dwg
C:\Users\gary.gramer\appdata\local\temp\AcPublish_8400\



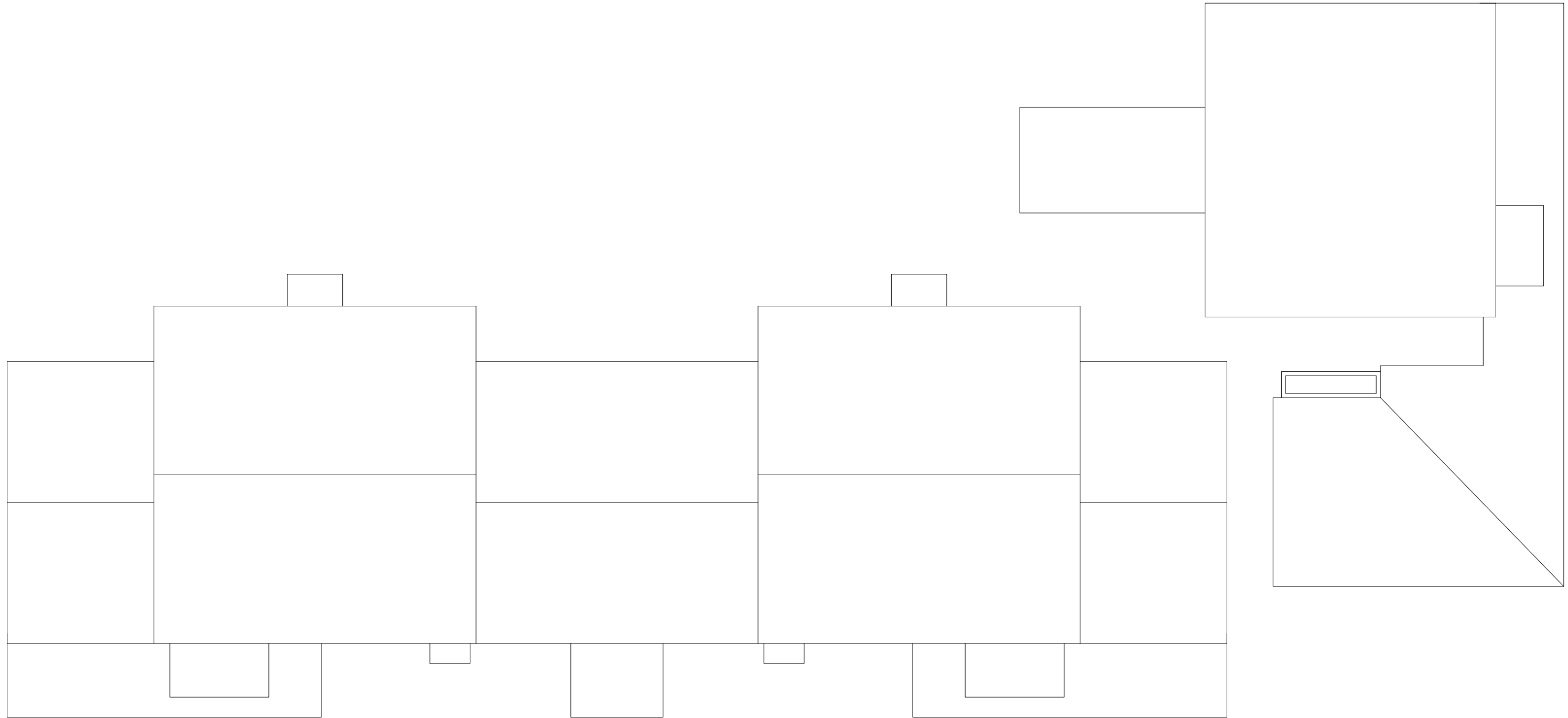
1 PAISLEY COURT FLATS - SECOND LEVEL
SCALE: 1" = 10'



M MONTANA STATE UNIVERSITY
FACILITIES PLANNING,
DESIGN & CONSTRUCTION
BOZEMAN, MONTANA
PHONE: 406.994.4131 FAX: 406.994.6572

INDEX # **39**
BUILDING # **531101**

Sep 20, 2013 - 9:30am - 531101-AR.dwg
H:\Family Housing\Paisley Court Flats\Building Plan - Book Copy\



1

PAISLEY COURT FLATS - ROOF LEVEL
SCALE: 1" = 10'



M MONTANA
STATE UNIVERSITY
FACILITIES PLANNING,
DESIGN & CONSTRUCTION
BOZEMAN, MONTANA
PHONE: 406.994.4131 FAX: 406.994.6572

INDEX #
39
BUILDING #
531101