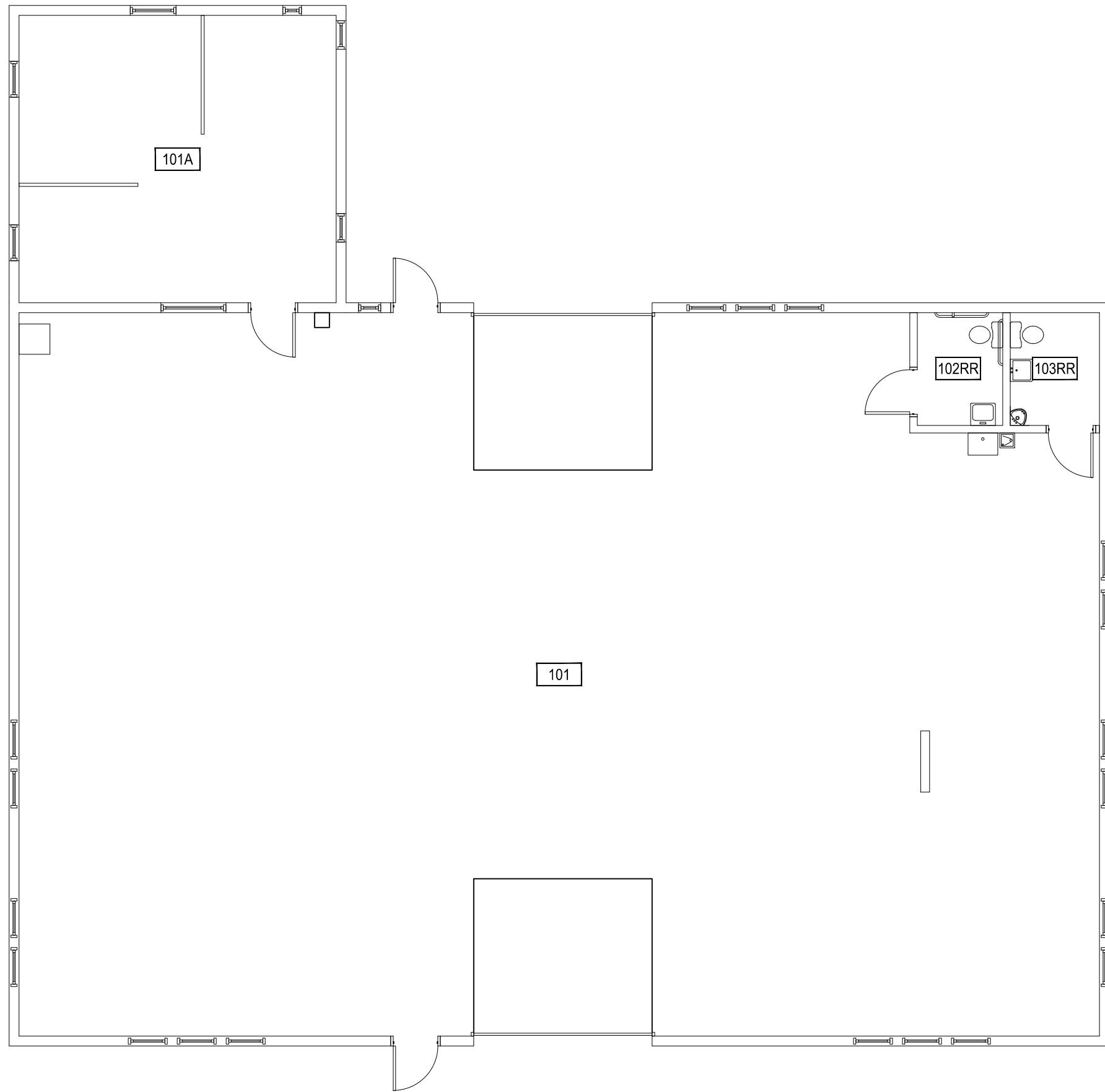


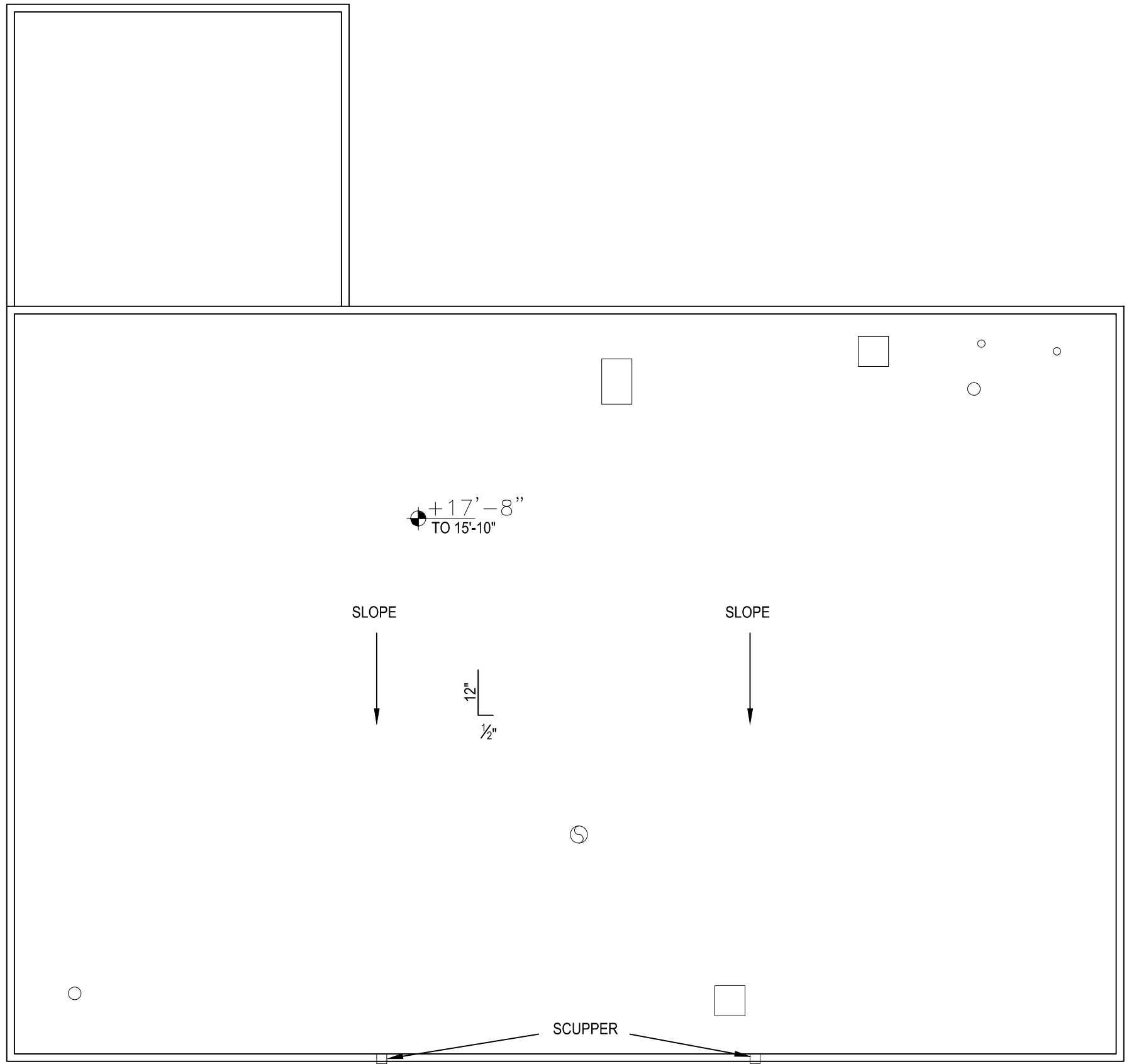
Oct 05, 2012 - 10:06am - 530_A1.dwg
H:\FS Campus Stores\Building Plan - Book Copy\



1 FS CAMPUS STORES - FIRST LEVEL
SCALE: 1/8" = 1'

M MONTANA
STATE UNIVERSITY
FACILITIES PLANNING,
DESIGN & CONSTRUCTION
BOZEMAN, MONTANA
PHONE: 406.994.4131 FAX: 406.994.6572

INDEX #
16
BUILDING #
530



1 FS CAMPUS STORES - ROOF LEVEL
SCALE: 1/8" = 1'

