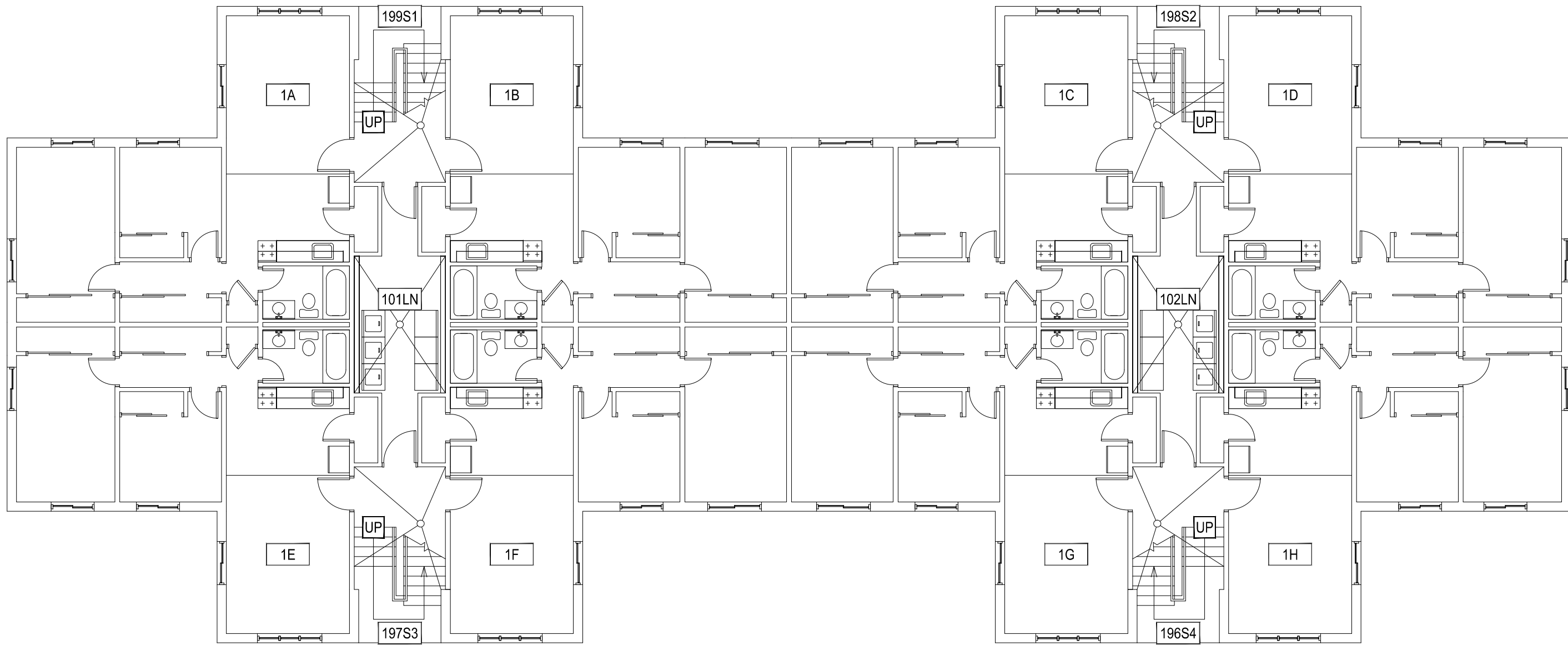


Sep 19, 2013 - 3:47 pm - 528106_1.dwg
C:\Users\gary.gramer\appdata\local\temp\AcPublish_8206



1

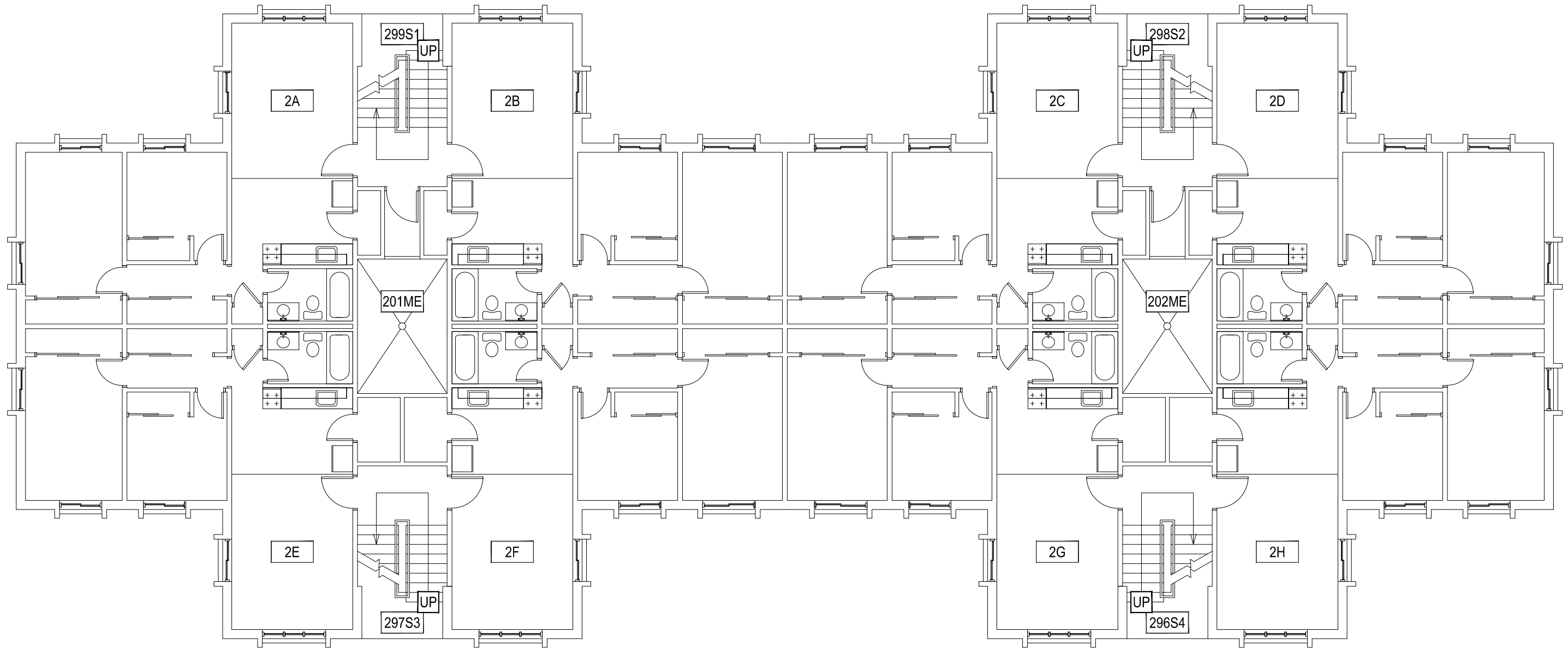
GRANT CHAMBERLAIN APARTMENTS - FIRST LEVEL

SCALE: 1" = 10'



M MONTANA
STATE UNIVERSITY
FACILITIES PLANNING,
DESIGN & CONSTRUCTION
BOZEMAN, MONTANA
PHONE: 406.994.4131 FAX: 406.994.6572

INDEX #
39
BUILDING #
528106

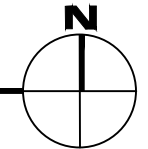


Sep 19, 2013 - 3:47 pm - 528106_A2.dwg
 C:\Users\gary.gramer\appdata\local\temp\AcPublish_8206

1

GRANT CHAMBERLAIN APARTMENTS - SECOND LEVEL

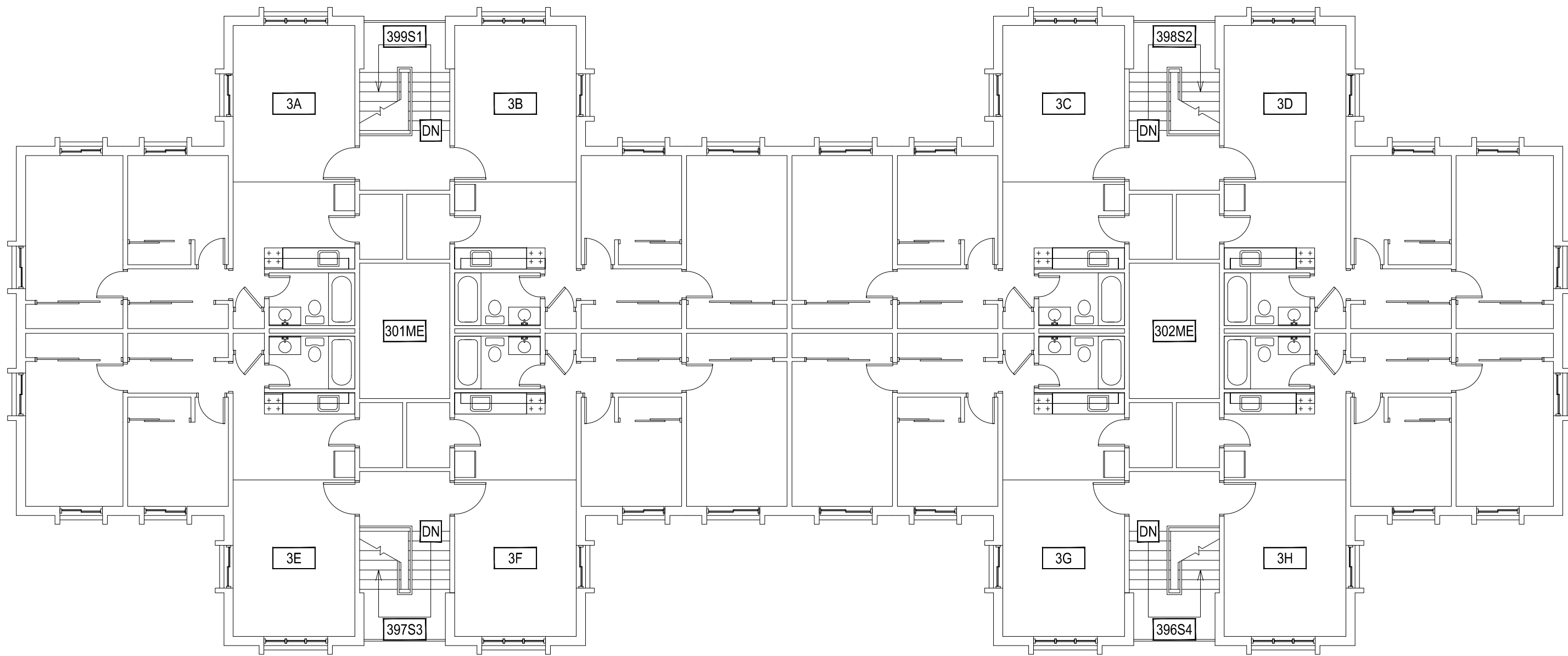
SCALE: 1" = 10'




MONTANA STATE UNIVERSITY
 FACILITIES PLANNING,
 DESIGN & CONSTRUCTION
 BOZEMAN, MONTANA
 PHONE: 406.994.4131 FAX: 406.994.6572

INDEX #	39
BUILDING #	528106

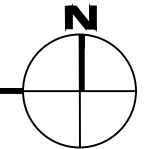
Sep 19, 2013 - 3:47 pm - 528106_A3.dwg
C:\Users\gary.gramer\appdata\local\temp\AcPublish_8206



1

GRANT CHAMBERLAIN APARTMENTS - THIRD LEVEL

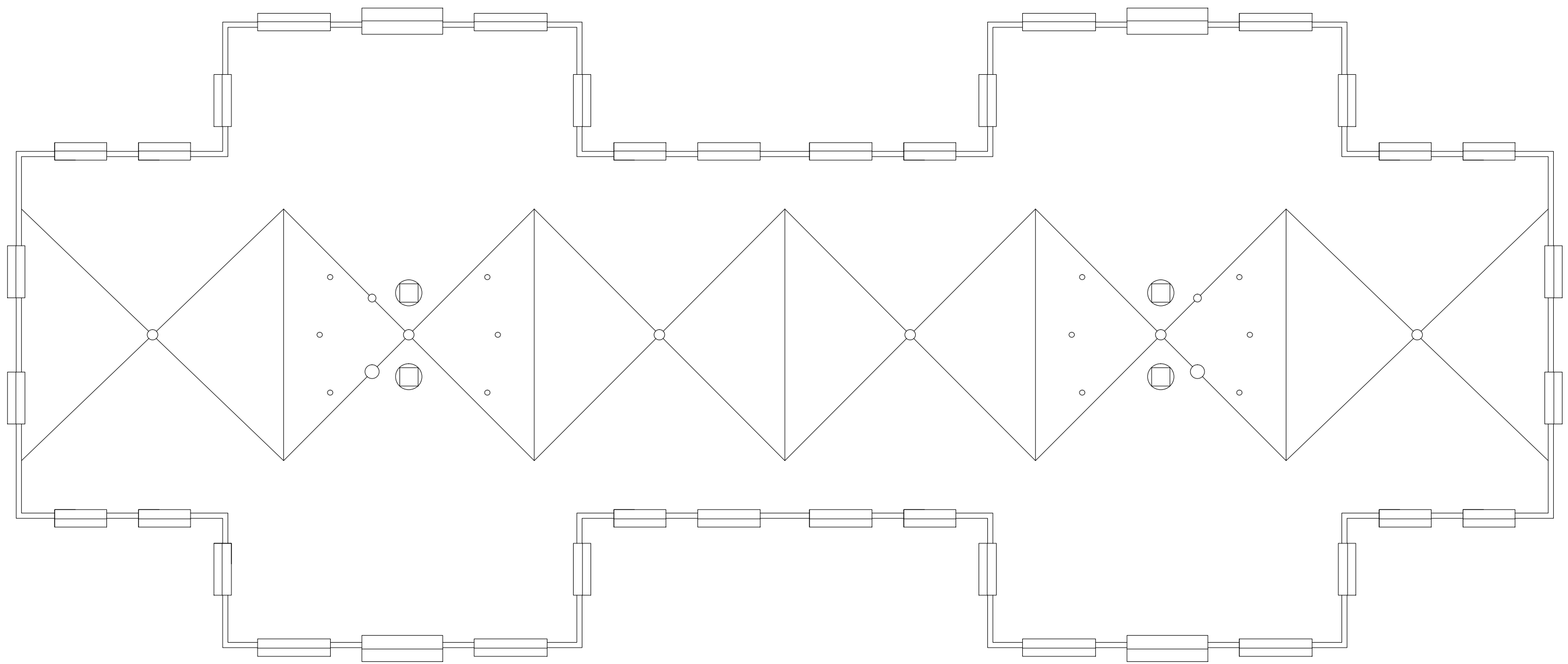
SCALE: 1" = 10'



M MONTANA
STATE UNIVERSITY
FACILITIES PLANNING,
DESIGN & CONSTRUCTION
BOZEMAN, MONTANA
PHONE: 406.994.4131 FAX: 406.994.6572

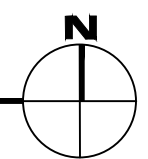
INDEX #
39
BUILDING #
528106

Sep 19, 2013 - 3:47 pm - 528106_AR.dwg
H:\Family Housing\Grant Chamberlain Apartments\Building Plan - Book Copy\



1

GRANT CHAMBERLAIN APARTMENTS - ROOF LEVEL
SCALE: 1" = 10'



M MONTANA
STATE UNIVERSITY
FACILITIES PLANNING,
DESIGN & CONSTRUCTION
BOZEMAN, MONTANA
PHONE: 406.994.4131 FAX: 406.994.6572

INDEX #
39
BUILDING #
528106