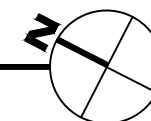


1

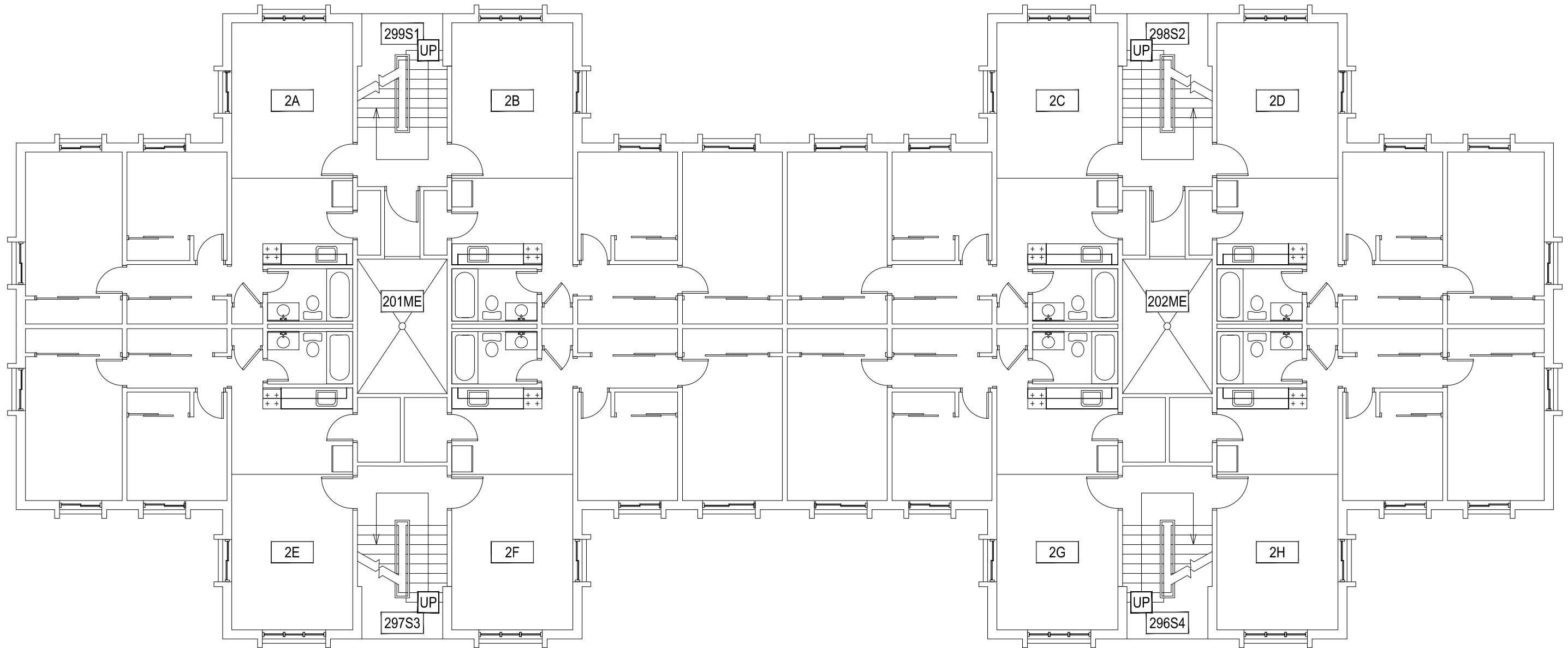
GRANT CHAMBERLAIN APARTMENTS - FIRST LEVEL

SCALE: 1" = 10'



**M** MONTANA  
STATE UNIVERSITY  
FACILITIES PLANNING,  
DESIGN & CONSTRUCTION  
BOZEMAN, MONTANA  
PHONE: 406.994.4131 FAX: 406.994.6572

INDEX #  
**39**  
BUILDING #  
**528104**

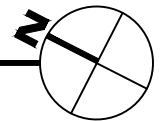


Sep 19, 2013 - 3:16pm - 528104\_A2.dwg  
 C:\Users\gary.gramer\appdata\local\temp\AcPublish\_8206

1

**GRANT CHAMBERLAIN APARTMENTS - SECOND LEVEL**

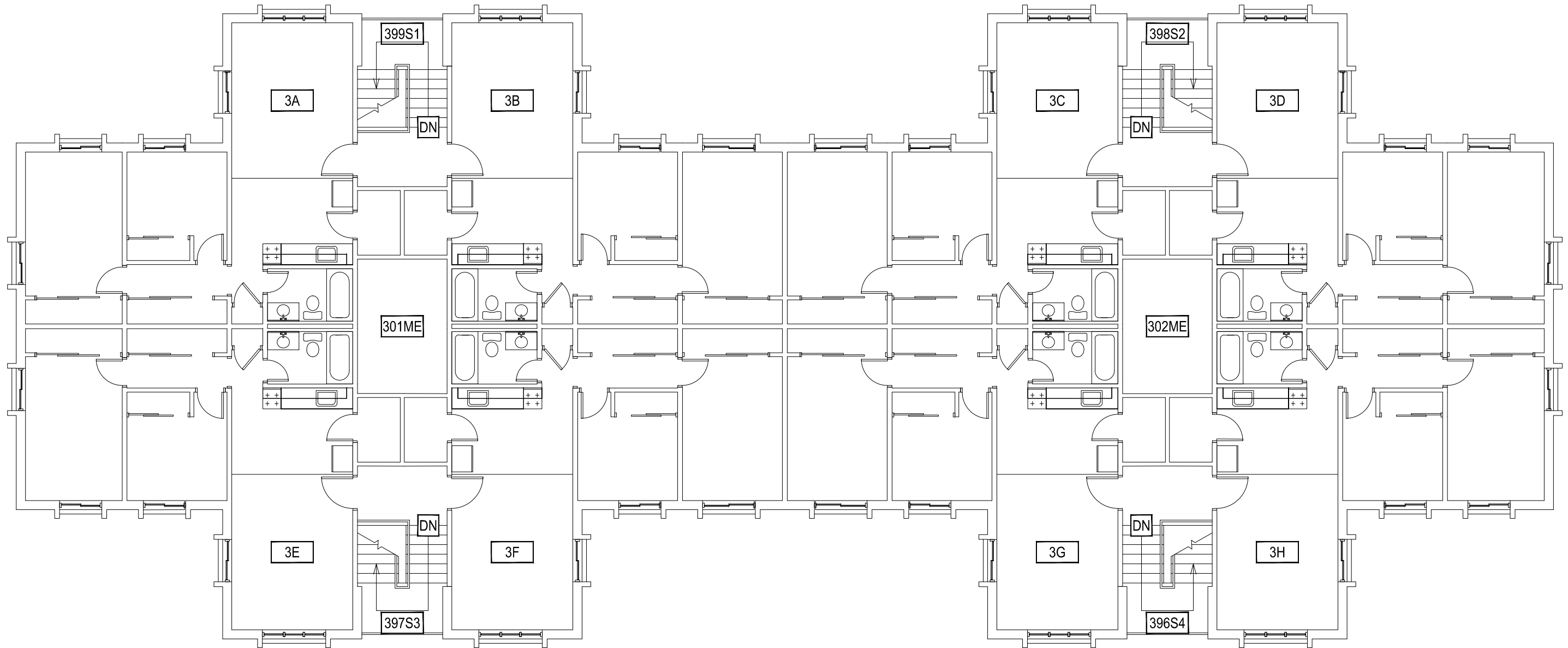
SCALE: 1" = 10'




**MONTANA STATE UNIVERSITY**  
 FACILITIES PLANNING,  
 DESIGN & CONSTRUCTION  
 BOZEMAN, MONTANA  
 PHONE: 406.994.4131 FAX: 406.994.6572

INDEX #	<b>39</b>
BUILDING #	<b>528104</b>

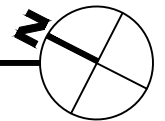
Sep 19, 2013 - 3:16pm - 528104\_A3.dwg  
C:\Users\gary.gramer\appdata\local\temp\AcPublish\_8206



1

GRANT CHAMBERLAIN APARTMENTS - THIRD LEVEL

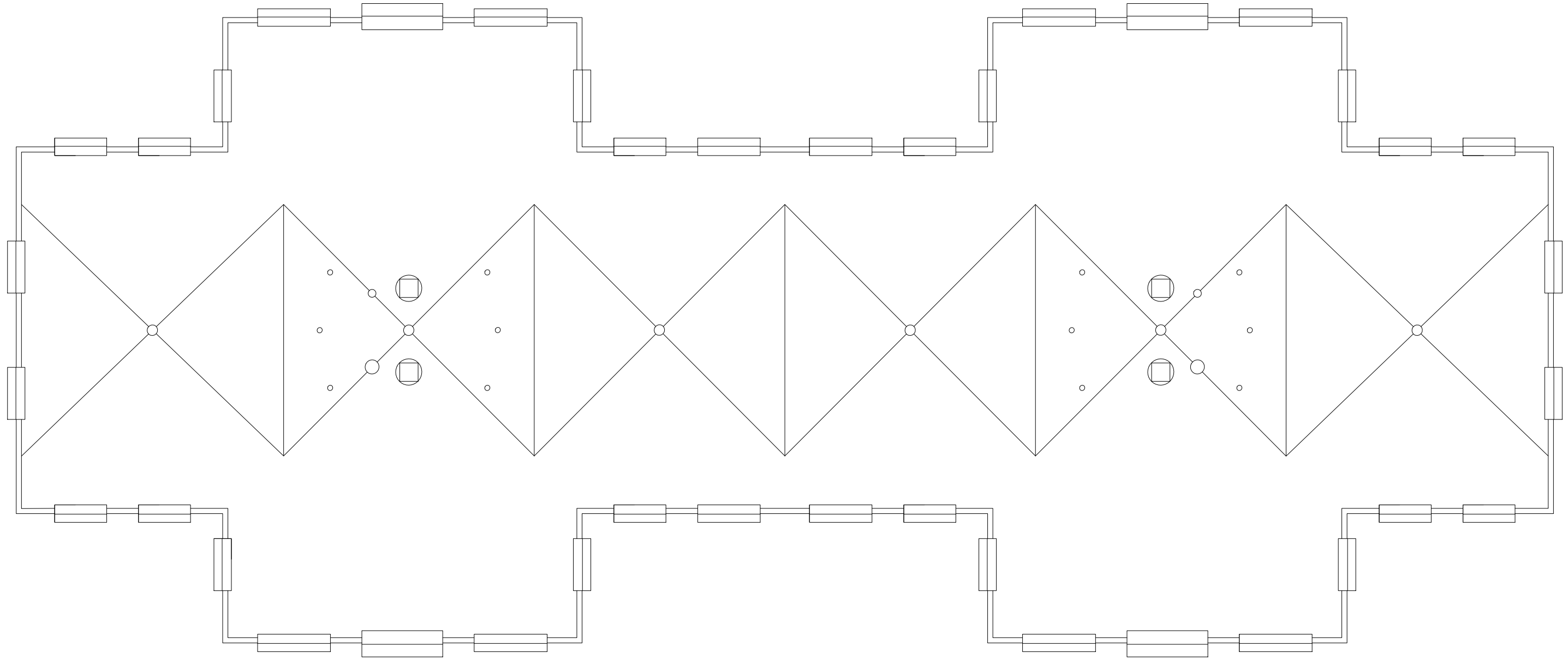
SCALE: 1" = 10'



**M** MONTANA STATE UNIVERSITY  
FACILITIES PLANNING,  
DESIGN & CONSTRUCTION  
BOZEMAN, MONTANA  
PHONE: 406.994.4131 FAX: 406.994.6572

INDEX # **39**  
BUILDING # **528104**

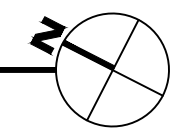
Sep 19, 2013 - 3:16pm - 528104\_AR.dwg  
H:\Family Housing\Grant Chamberlain Apartments\Building Plan - Book Copy\



1

GRANT CHAMBERLAIN APARTMENTS - ROOF LEVEL

SCALE: 1" = 10'



**M** MONTANA  
STATE UNIVERSITY  
FACILITIES PLANNING,  
DESIGN & CONSTRUCTION  
BOZEMAN, MONTANA  
PHONE: 406.994.4131 FAX: 406.994.6572

INDEX #  
**39**  
BUILDING #  
**528104**