

1

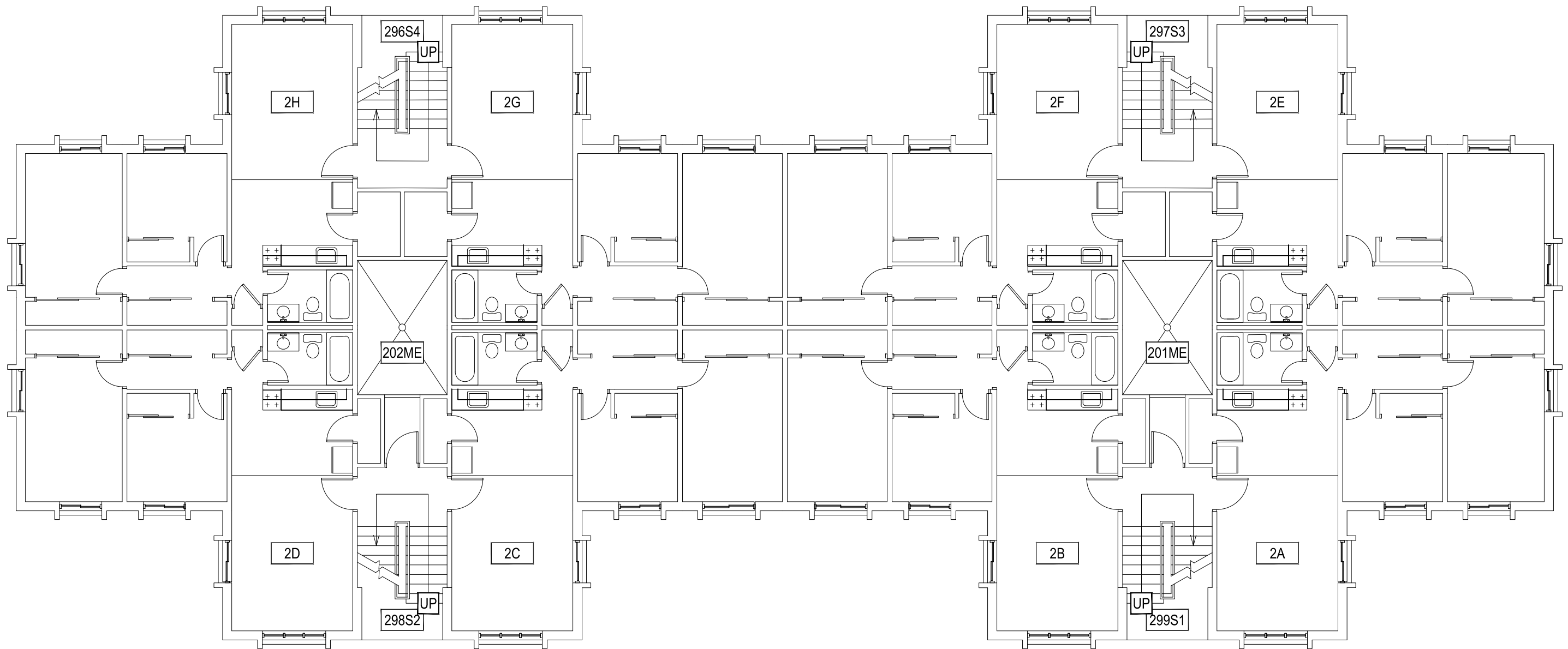
GRANT CHAMBERLAIN APARTMENTS - FIRST LEVEL

SCALE: 1" = 10'



M MONTANA
STATE UNIVERSITY
FACILITIES PLANNING,
DESIGN & CONSTRUCTION
BOZEMAN, MONTANA
PHONE: 406.994.4131 FAX: 406.994.6572

INDEX #
39
BUILDING #
528103



1

GRANT CHAMBERLAIN APARTMENTS - SECOND LEVEL

SCALE: 1" = 10'



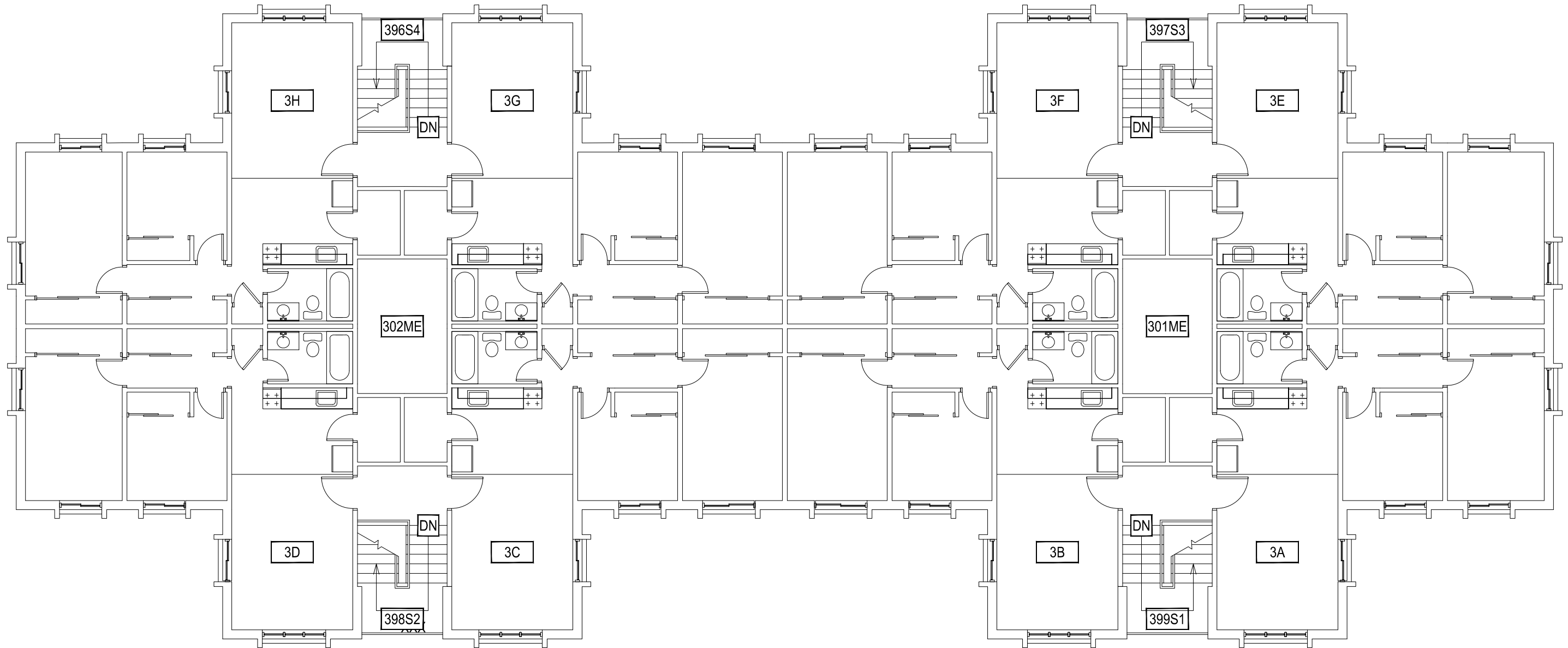
M MONTANA
STATE UNIVERSITY
FACILITIES PLANNING,
DESIGN & CONSTRUCTION
BOZEMAN, MONTANA
PHONE: 406.994.4131 FAX: 406.994.6572

INDEX #

39

BUILDING #

528103



1

GRANT CHAMBERLAIN APARTMENTS - THIRD LEVEL

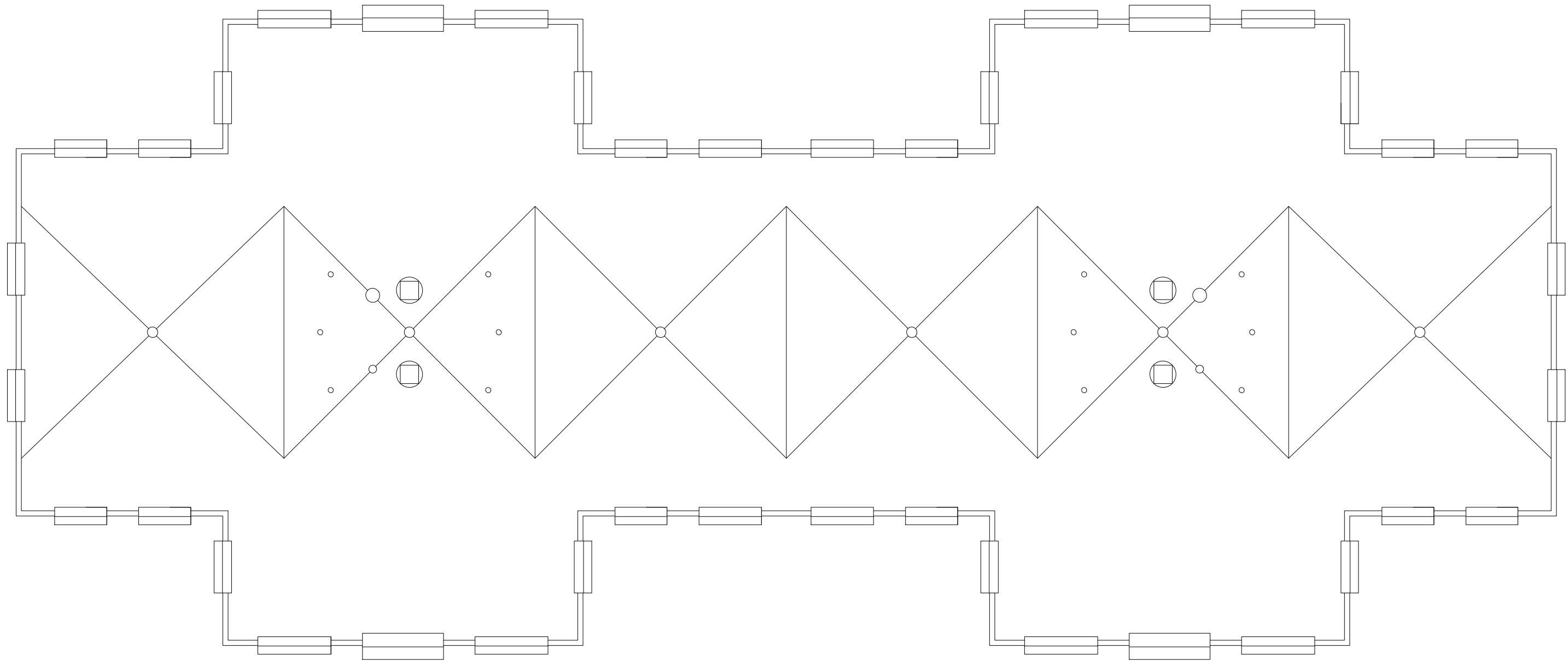
SCALE: 1" = 10'



M MONTANA
STATE UNIVERSITY
FACILITIES PLANNING,
DESIGN & CONSTRUCTION
BOZEMAN, MONTANA
PHONE: 406.994.4131 FAX: 406.994.6572

INDEX #
39
BUILDING #
528103

Sep 19, 2013 - 3:13pm - 528103_AR.dwg
H:\Family Housing\Grant Chamberlain Apartments\Building Plan - Book Copy\



1

GRANT CHAMBERLAIN APARTMENTS - ROOF LEVEL

SCALE: 1" = 10'



M MONTANA
STATE UNIVERSITY
FACILITIES PLANNING,
DESIGN & CONSTRUCTION
BOZEMAN, MONTANA
PHONE: 406.994.4131 FAX: 406.994.6572

INDEX #
39
BUILDING #
528103