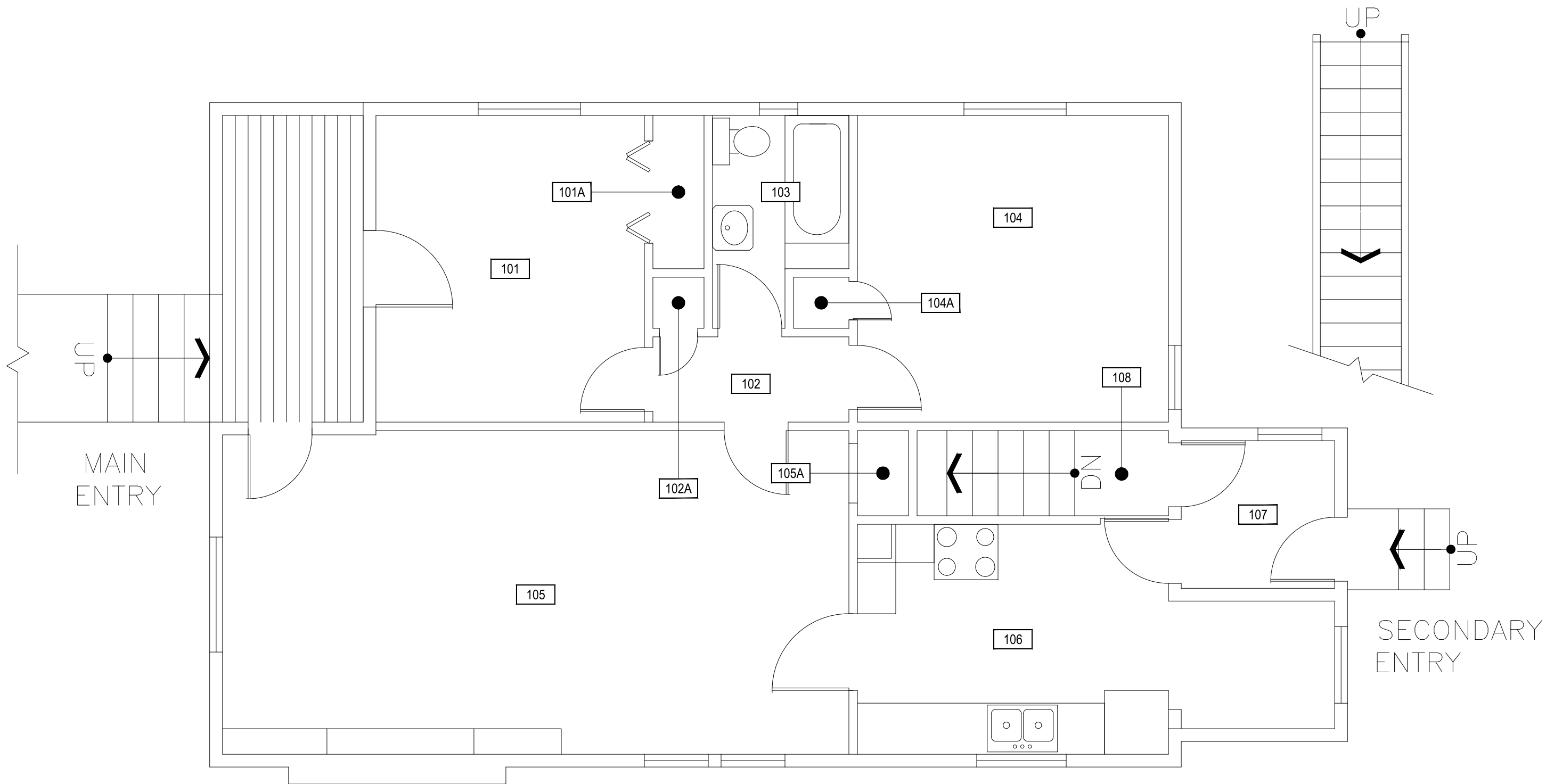


1106 S 6TH AVENUE - BASEMENT LEVEL

SCALE: 1/4" = 1'



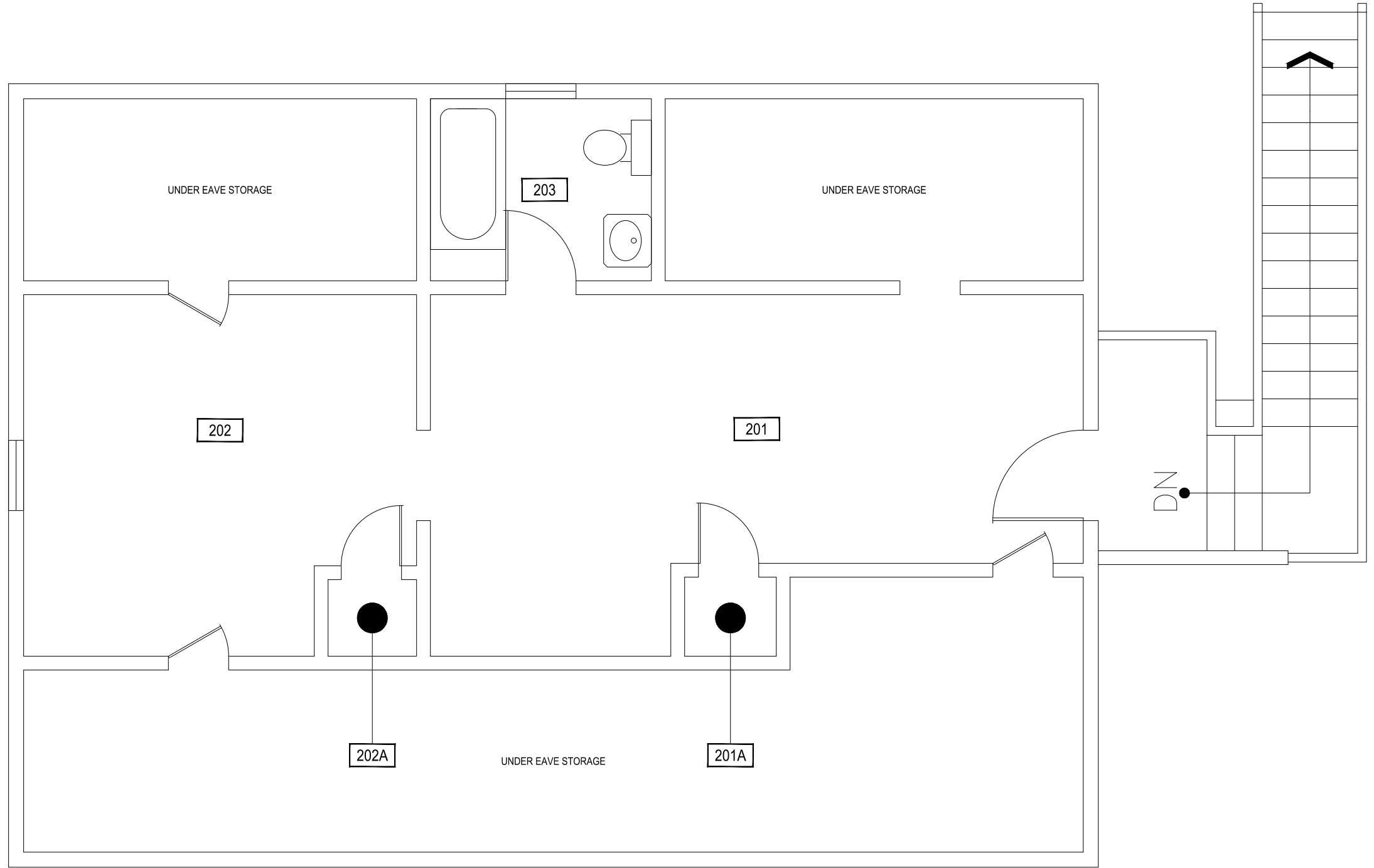


1

1106 S 6TH AVENUE - FIRST LEVEL

SCALE: 1/4" = 1'





Dec 20, 2016 - 3:58pm - 527_A2.dwg
 H:\1106 S 6th Avenue\Building Plan - Book Copy\

1

1106 S 6TH AVENUE - SECOND LEVEL

SCALE: 1/4" = 1'




MONTANA
 STATE UNIVERSITY
 CAMPUS PLANNING,
 DESIGN & CONSTRUCTION
 BOZEMAN, MONTANA
 PHONE: 406.994.5413 FAX: 406.994.5665

INDEX #	75
BUILDING #	527