

Dec 20, 2016 - 3:56pm - 526_Ar.dwg
 H:\1102 S 6th Avenue\Building Plan - Book Copy1

1

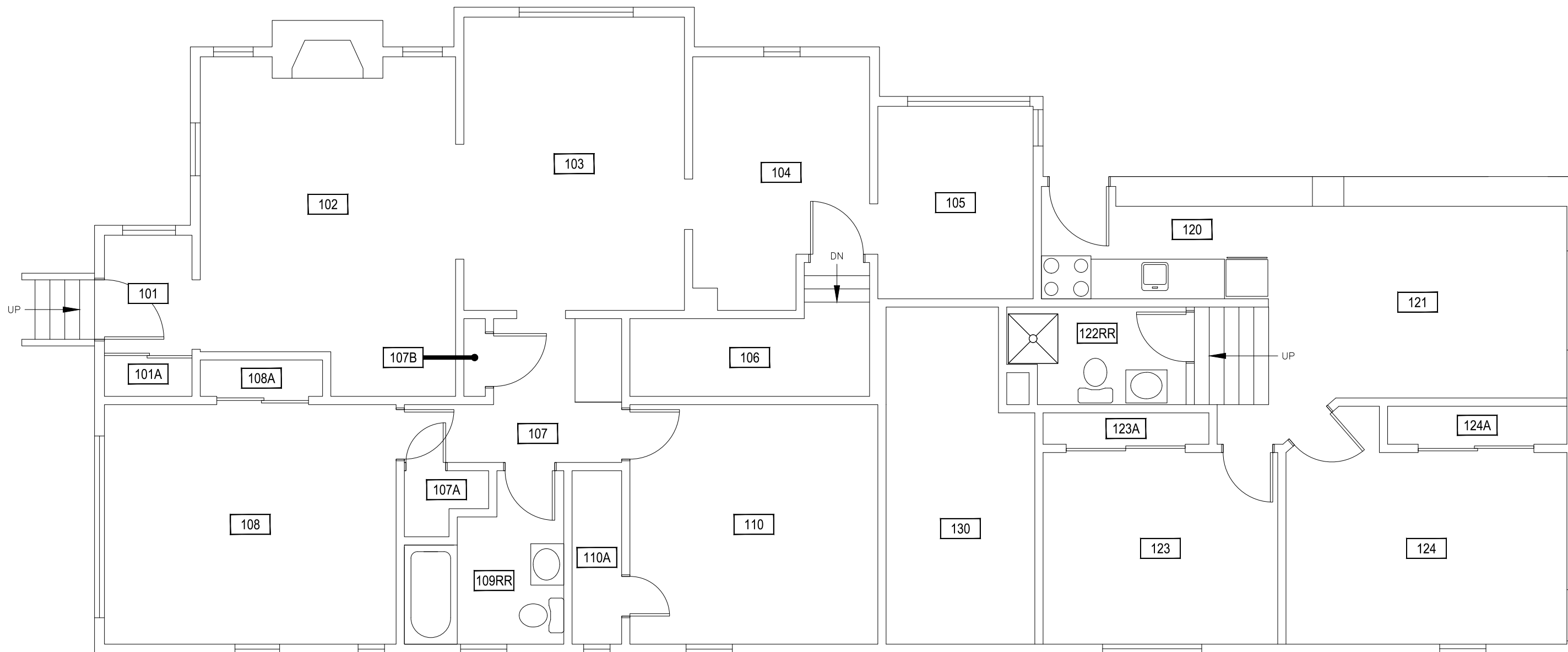
1102 S 6TH AVENUE - BASEMENT LEVEL

SCALE: 3/16" = 1'



M MONTANA
 STATE UNIVERSITY
 CAMPUS PLANNING,
 DESIGN & CONSTRUCTION
 BOZEMAN, MONTANA
 PHONE: 406.994.5413 FAX: 406.994.5665

INDEX #	69
BUILDING #	526



Dec 20, 2016 - 3:56pm - 526_A_1.dwg
 H:\1102 S 6th Avenue\Building Plan - Book Copy1

1

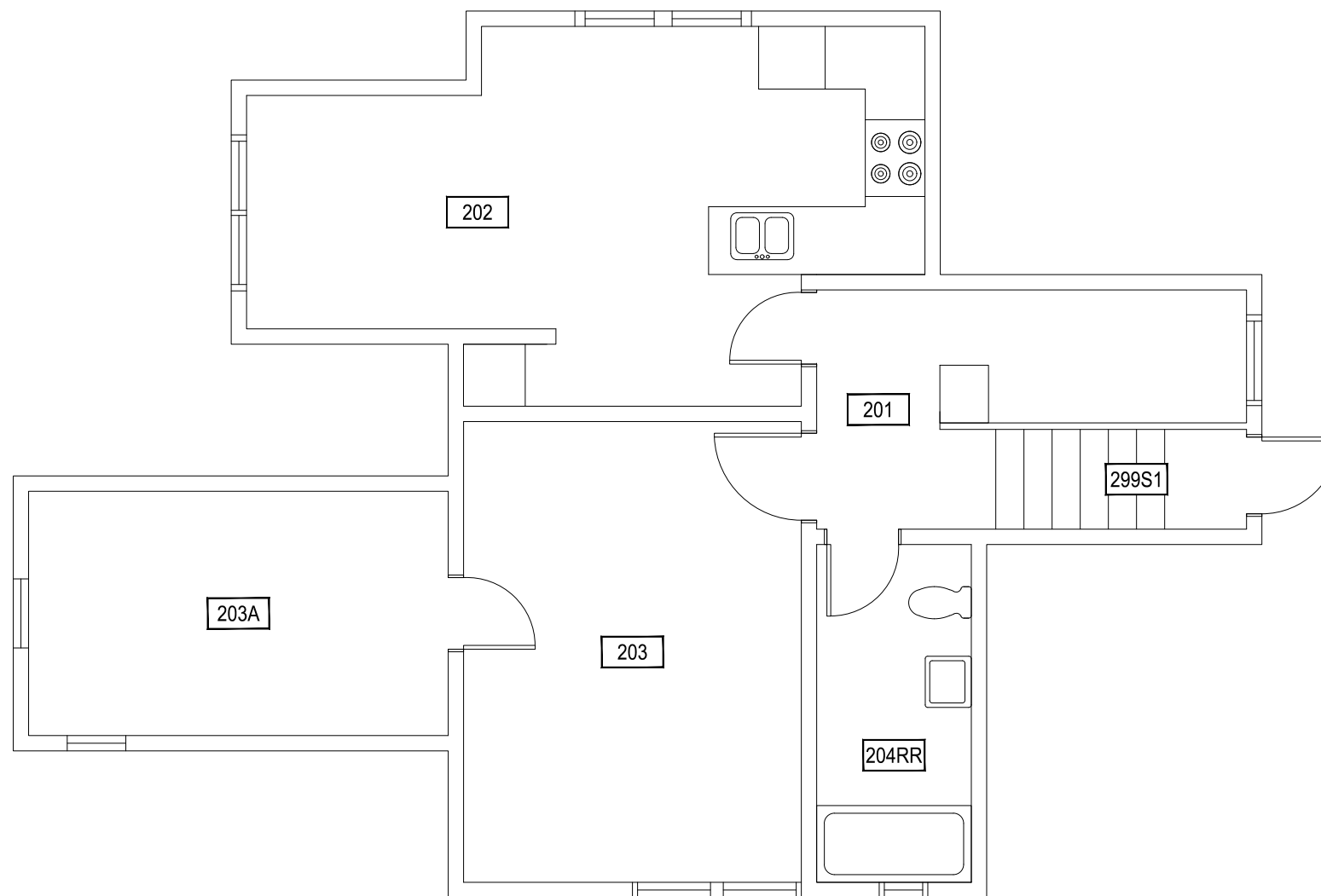
1102 S 6TH AVENUE - FIRST LEVEL

SCALE: 3/16" = 1'




MONTANA
 STATE UNIVERSITY
 CAMPUS PLANNING,
 DESIGN & CONSTRUCTION
 BOZEMAN, MONTANA
 PHONE: 406.994.5413 FAX: 406.994.5665

INDEX #	69
BUILDING #	526



1

1102 S 6TH AVENUE - SECOND LEVEL

SCALE: 3/16" = 1'



M MONTANA
STATE UNIVERSITY
CAMPUS PLANNING,
DESIGN & CONSTRUCTION
BOZEMAN, MONTANA
PHONE: 406.994.5413 FAX: 406.994.5665

INDEX #	69
BUILDING #	526