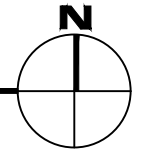


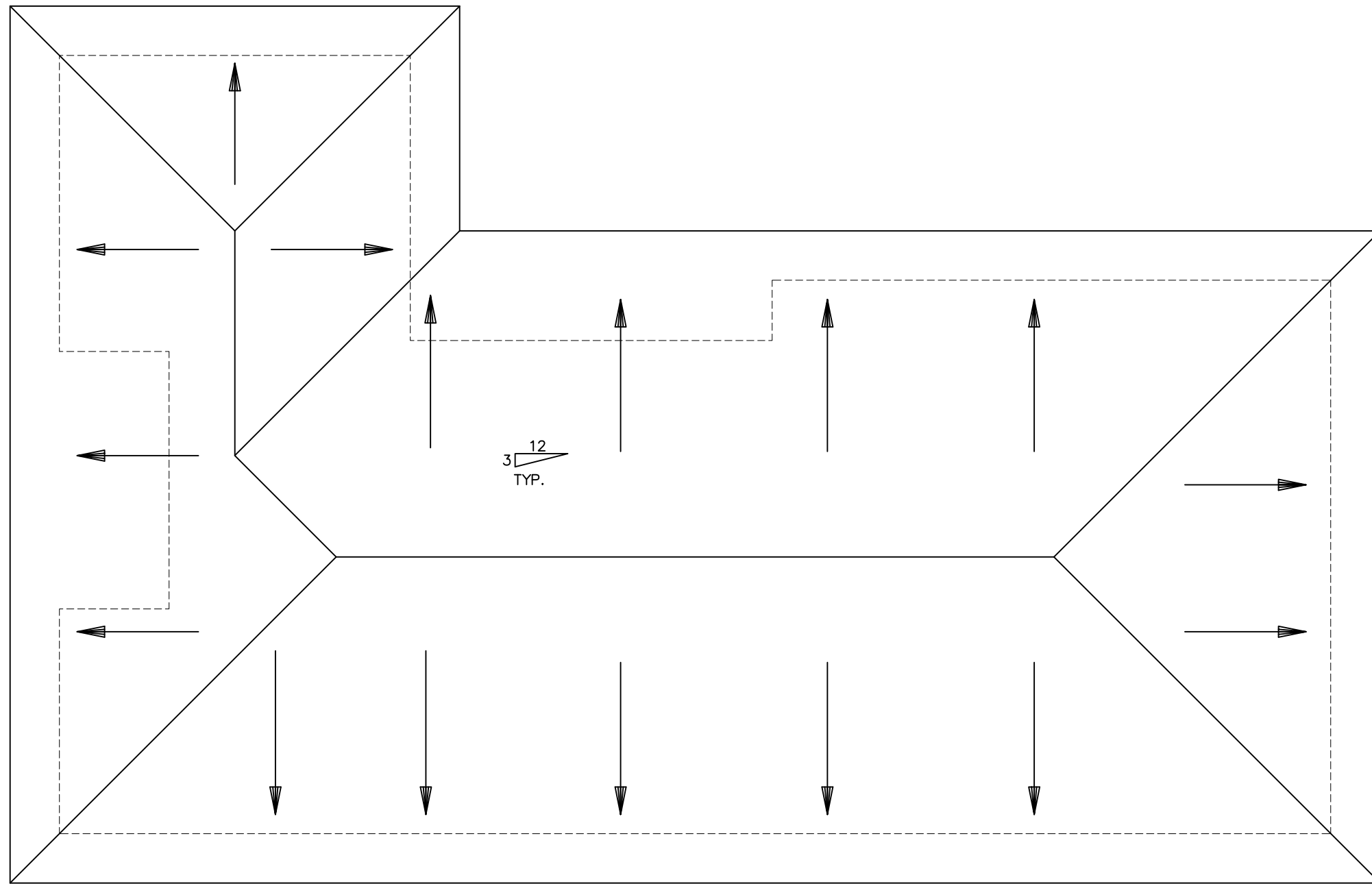
Oct 04, 2012 - 7:52am - 524\_A1.dwg  
 H:\Family Housing\Family Housing Office Building\Building Plan - Book Copy

1
**FAMILY HOUSING OFFICE BUILDING - FIRST LEVEL**  
 SCALE: 1/8" = 1'



**M MONTANA STATE UNIVERSITY**  
 FACILITIES PLANNING,  
 DESIGN & CONSTRUCTION  
 BOZEMAN, MONTANA  
 PHONE: 406.994.4131 FAX: 406.994.6572

INDEX #	<b>24</b>
BUILDING #	<b>524</b>



1

FAMILY HOUSING OFFICE BUILDING - ROOF LEVEL

SCALE: 1/8" = 1'



**M** MONTANA  
STATE UNIVERSITY  
FACILITIES PLANNING,  
DESIGN & CONSTRUCTION  
BOZEMAN, MONTANA  
PHONE: 406.994.4131 FAX: 406.994.6572

INDEX #  
**24**  
BUILDING #  
**524**