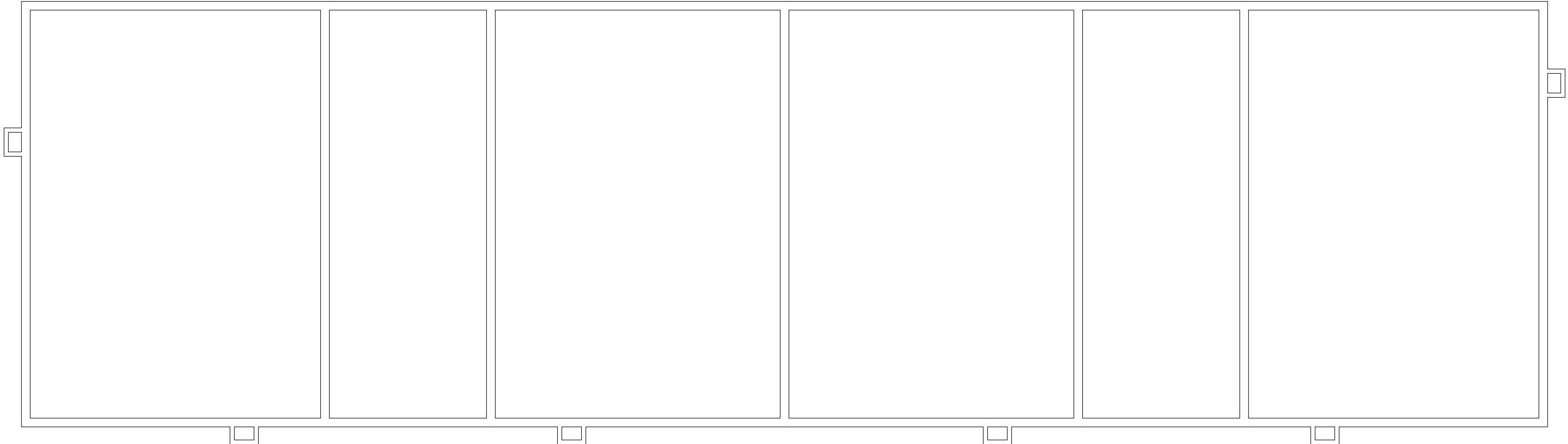


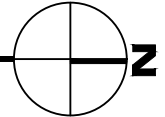
Dec 20, 2016 - 1:37pm - 523105_AB.dwg
H:\Family Housing\East Julia Martin Apartments\Building Plan - Book Copy



1

EAST JULIA MARTIN APARTMENTS - BASEMENT LEVEL

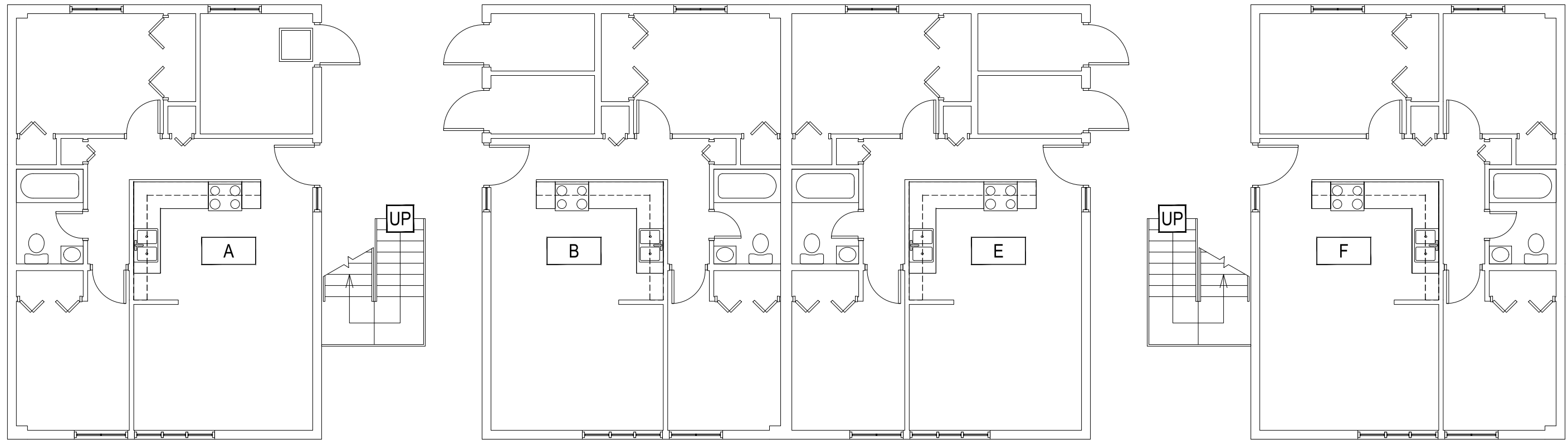
SCALE: 1/8" = 1'



M MONTANA
STATE UNIVERSITY
CAMPUS PLANNING,
DESIGN & CONSTRUCTION
BOZEMAN, MONTANA
PHONE: 406.994.5413 FAX: 406.994.5665

INDEX #
39
BUILDING #
523105

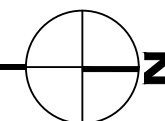
Dec 20, 2016 - 1:37pm - 523105_A1.dwg
H:\Family Housing\East Julia Martin Apartments\Building Plan - Book Copy



1

EAST JULIA MARTIN APARTMENTS - FIRST LEVEL

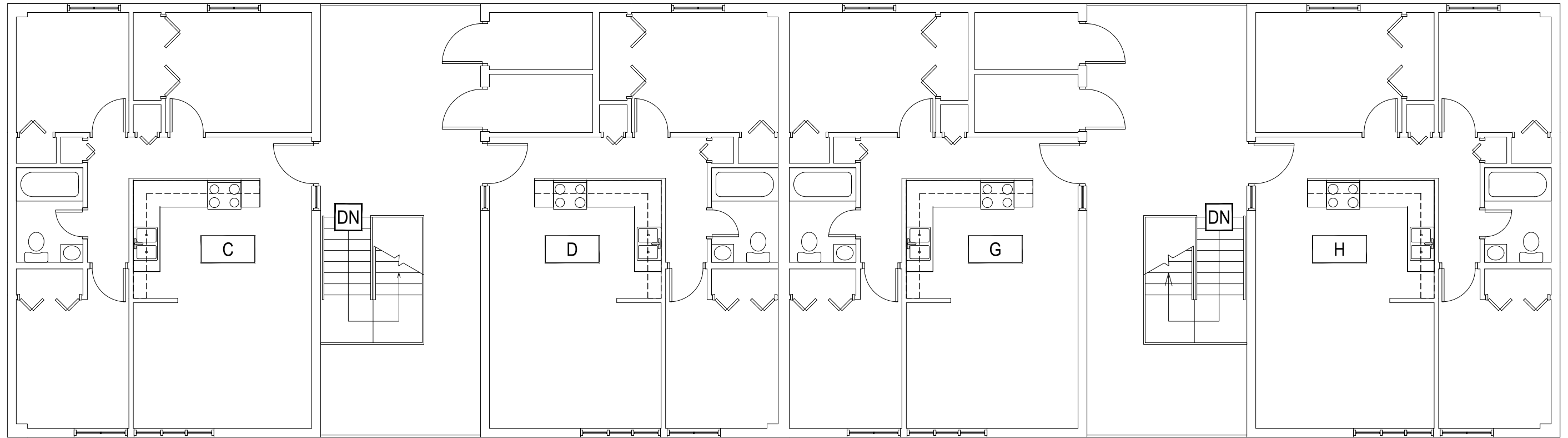
SCALE: 1/8" = 1'



M MONTANA
STATE UNIVERSITY
CAMPUS PLANNING,
DESIGN & CONSTRUCTION
BOZEMAN, MONTANA
PHONE: 406.994.5413 FAX: 406.994.5665

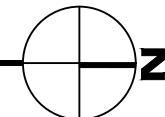
INDEX #
39
BUILDING #
523105

Dec 20, 2016 - 1:37pm - 523105_A2.dwg
H:\Family Housing\East Julia Martin Apartments\Building Plan - Book Copy



1

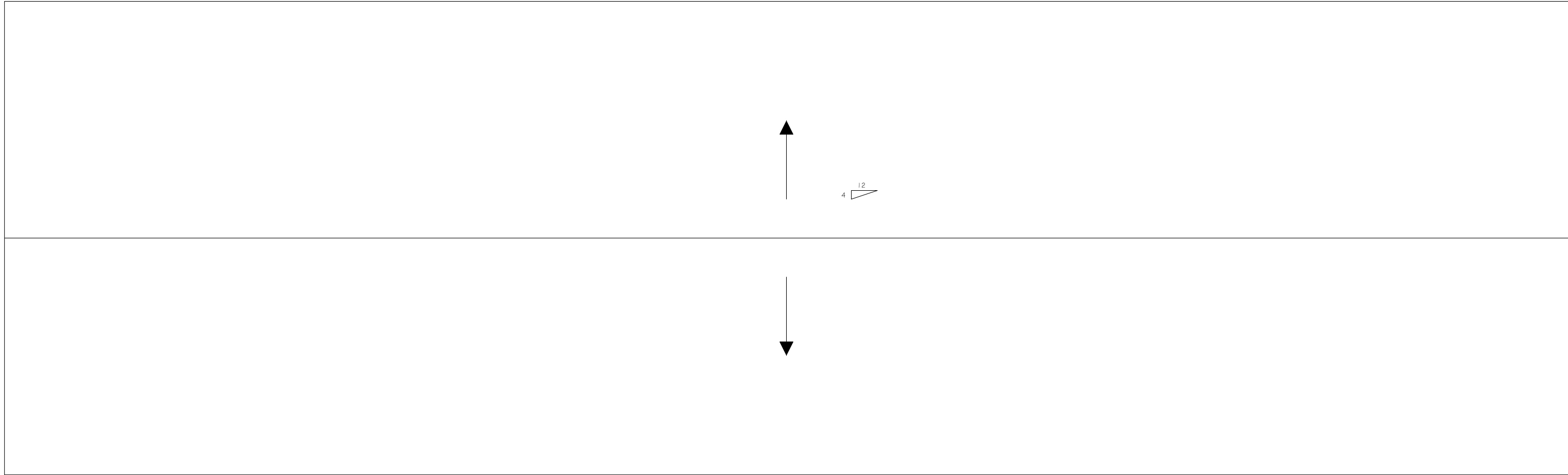
EAST JULIA MARTIN APARTMENTS - SECOND LEVEL
SCALE: 1/8" = 1'



M MONTANA STATE UNIVERSITY
CAMPUS PLANNING,
DESIGN & CONSTRUCTION
BOZEMAN, MONTANA
PHONE: 406.994.5413 FAX: 406.994.5665

INDEX # **39**
BUILDING # **523105**

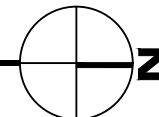
Dec 20, 2016 - 1:37pm - 523105_AR.dwg
H:\Family Housing\East Julia Martin Apartments\Building Plan - Book Copy



1

EAST JULIA MARTIN APARTMENTS - ROOF LEVEL

SCALE: 1/8" = 1'



M MONTANA
STATE UNIVERSITY
CAMPUS PLANNING,
DESIGN & CONSTRUCTION
BOZEMAN, MONTANA
PHONE: 406.994.5413 FAX: 406.994.5665

INDEX #	39
BUILDING #	523105