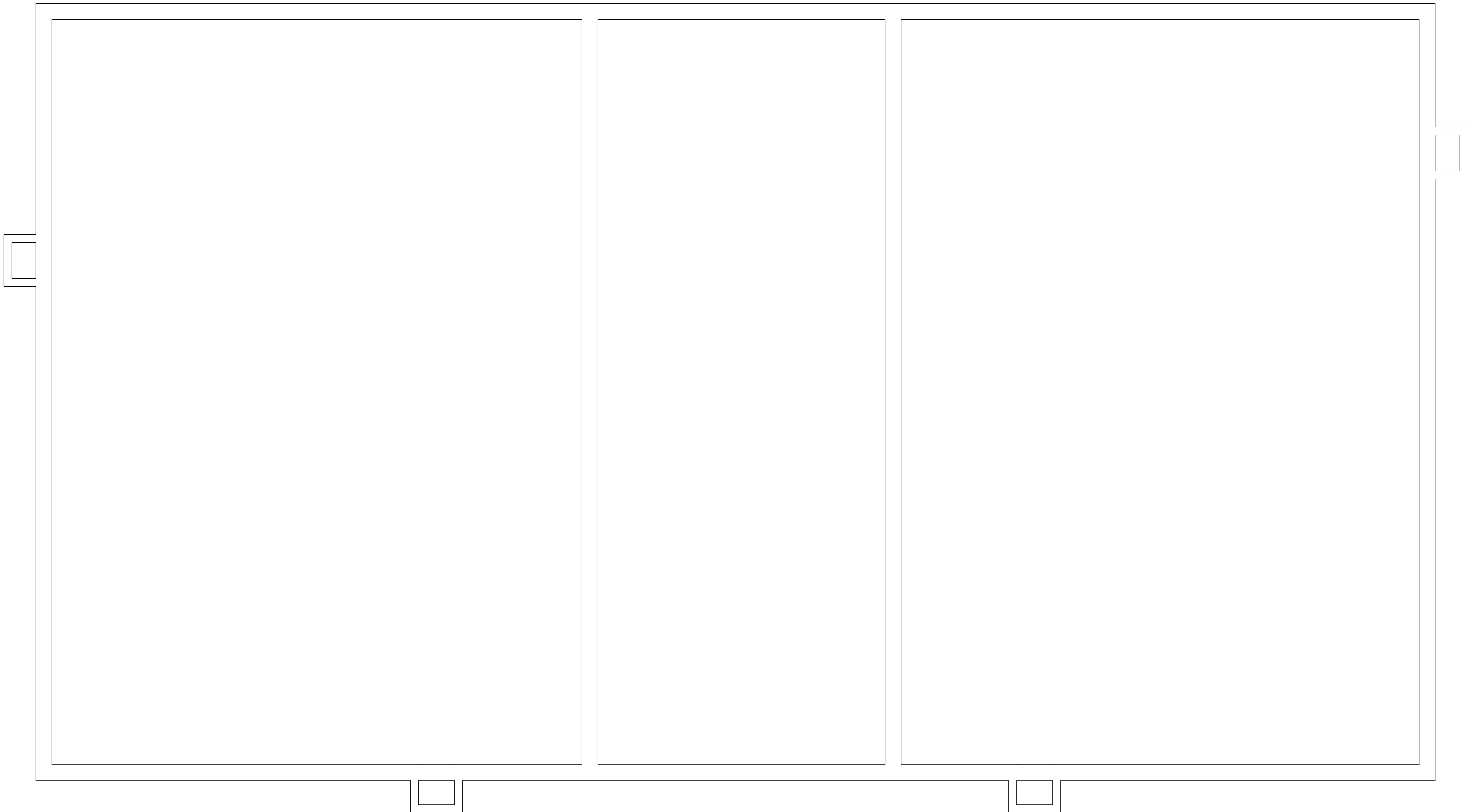


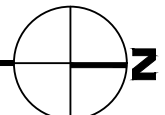
Dec 20, 2016 - 1:13pm - 523102_AB.dwg
H:\Family Housing\East Julia Martin Apartments\Building Plan - Book Copy\



1

EAST JULIA MARTIN APARTMENTS - BASEMENT LEVEL

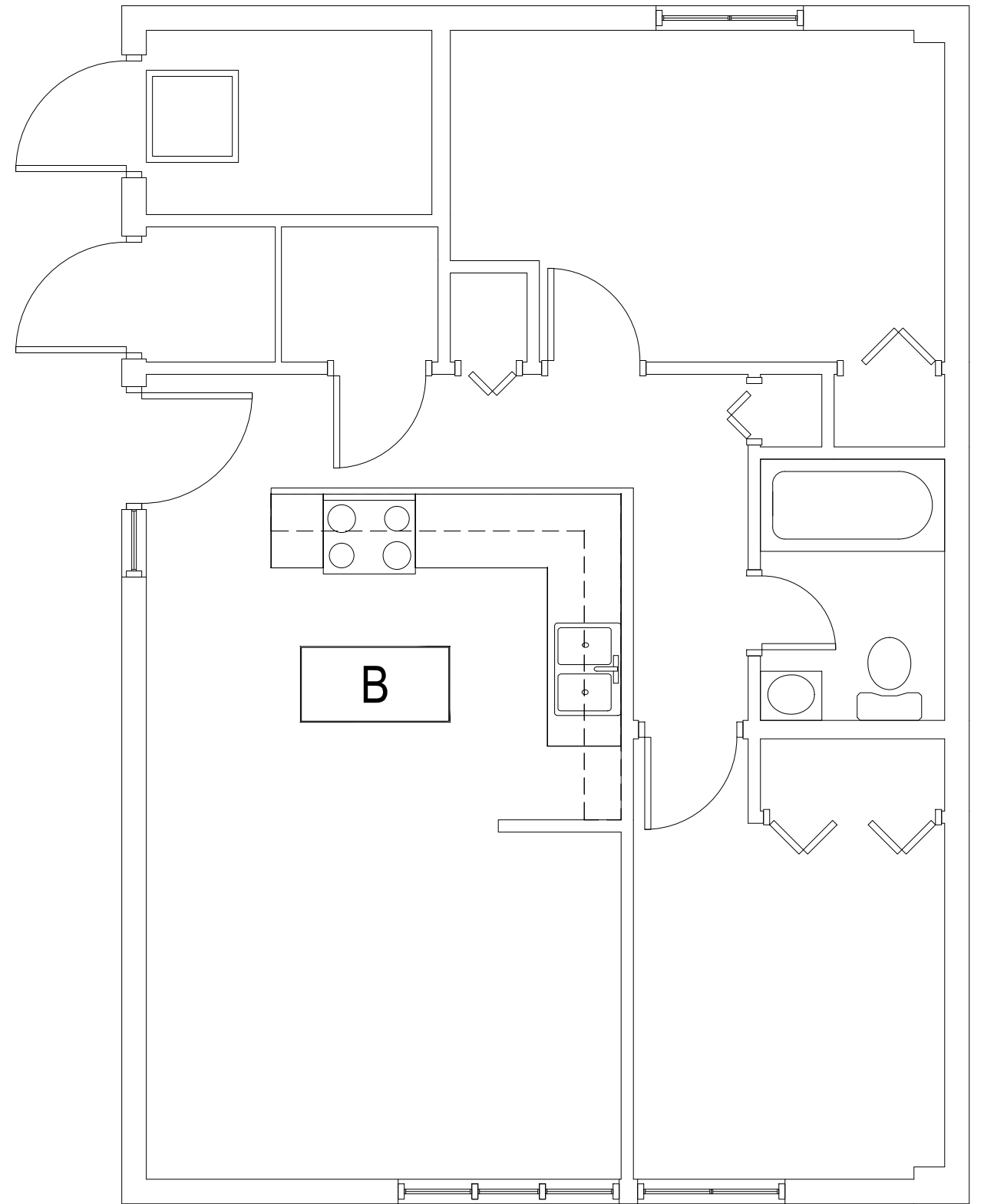
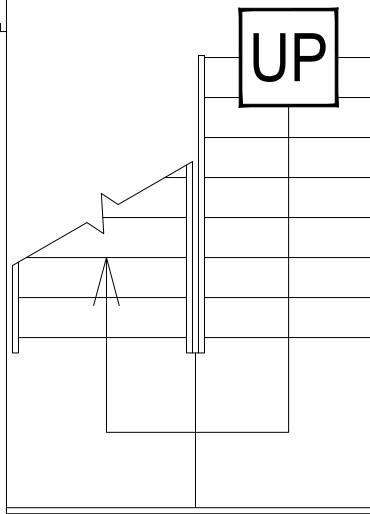
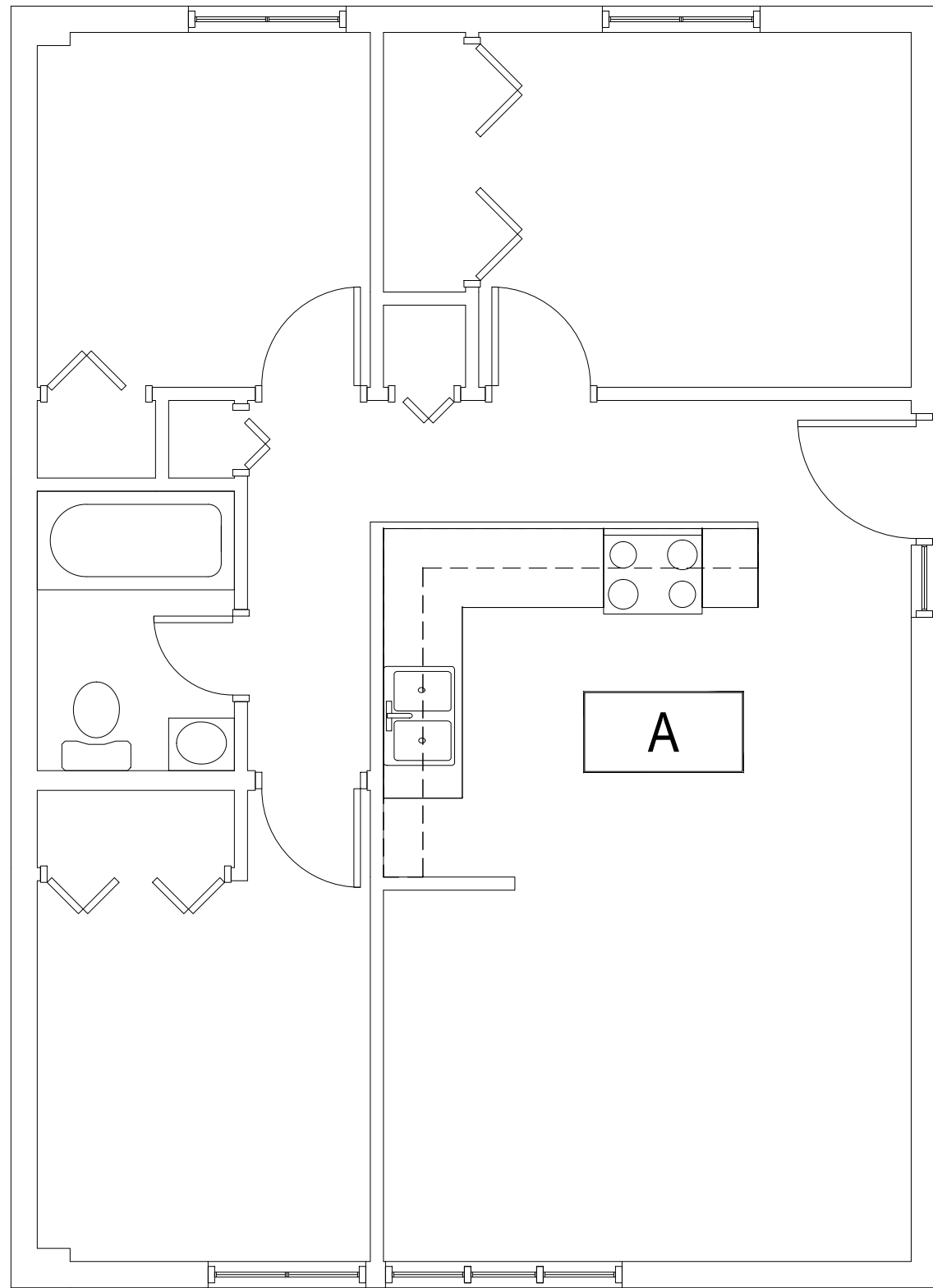
SCALE: 1/4" = 1'



M MONTANA
STATE UNIVERSITY
CAMPUS PLANNING,
DESIGN & CONSTRUCTION
BOZEMAN, MONTANA
PHONE: 406.994.5413 FAX: 406.994.5665

INDEX #
39
BUILDING #
523102

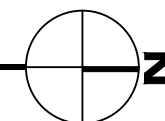
Dec 20, 2016 - 1:13pm - 523102_A1.dwg
H:\Family Housing\East Julia Martin Apartments\Building Plan - Book Copy



1

EAST JULIA MARTIN APARTMENTS - FIRST LEVEL

SCALE: 1/4" = 1'



M MONTANA
STATE UNIVERSITY
CAMPUS PLANNING,
DESIGN & CONSTRUCTION
BOZEMAN, MONTANA
PHONE: 406.994.5413 FAX: 406.994.5665

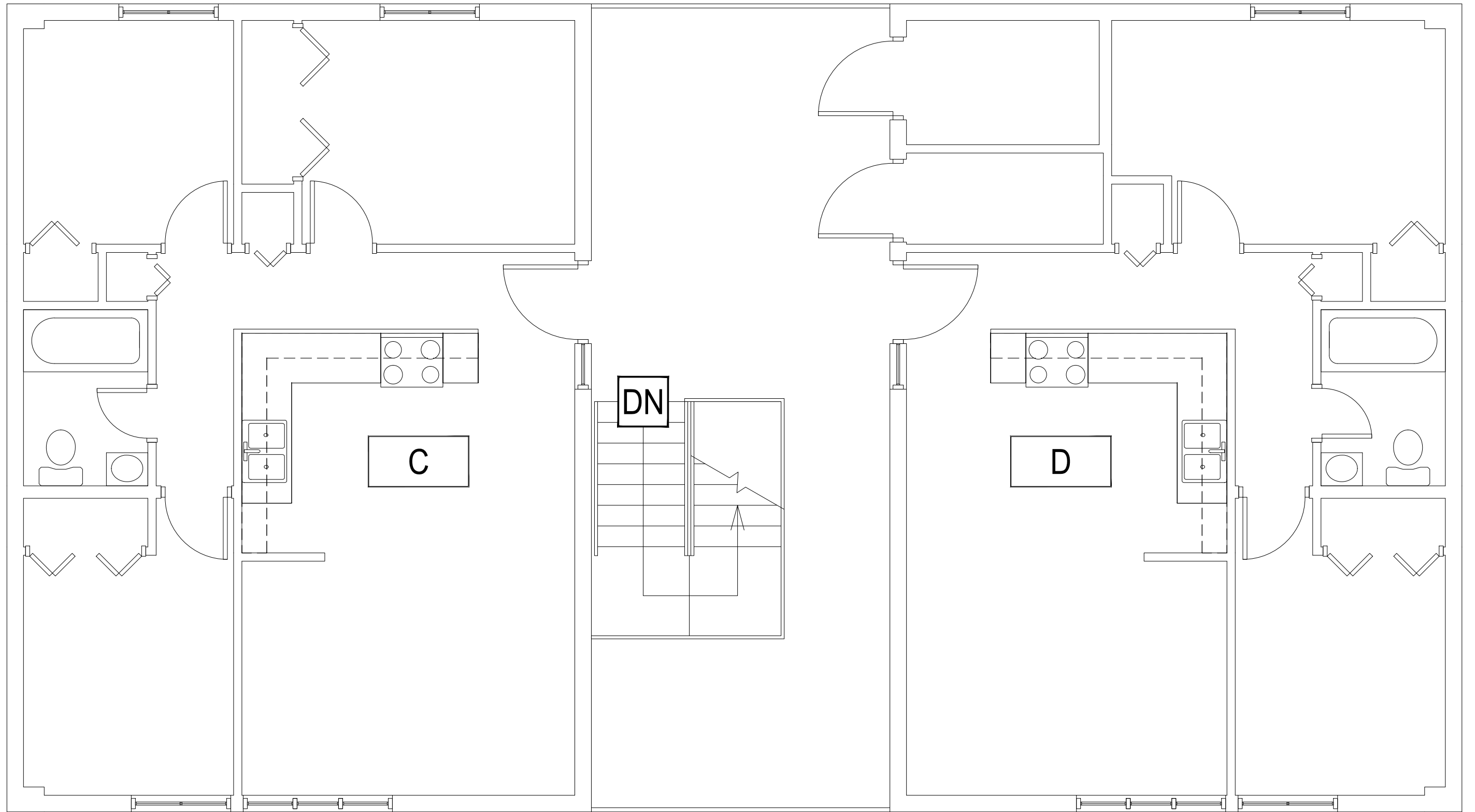
INDEX #

39

BUILDING #

523102

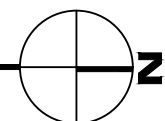
Dec 20, 2016 - 1:13pm - 523102_A2.dwg
H:\Family Housing\East Julia Martin Apartments\Building Plan - Book Copy



1

EAST JULIA MARTIN APARTMENTS - SECOND LEVEL

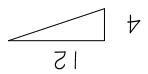
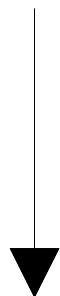
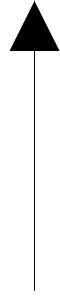
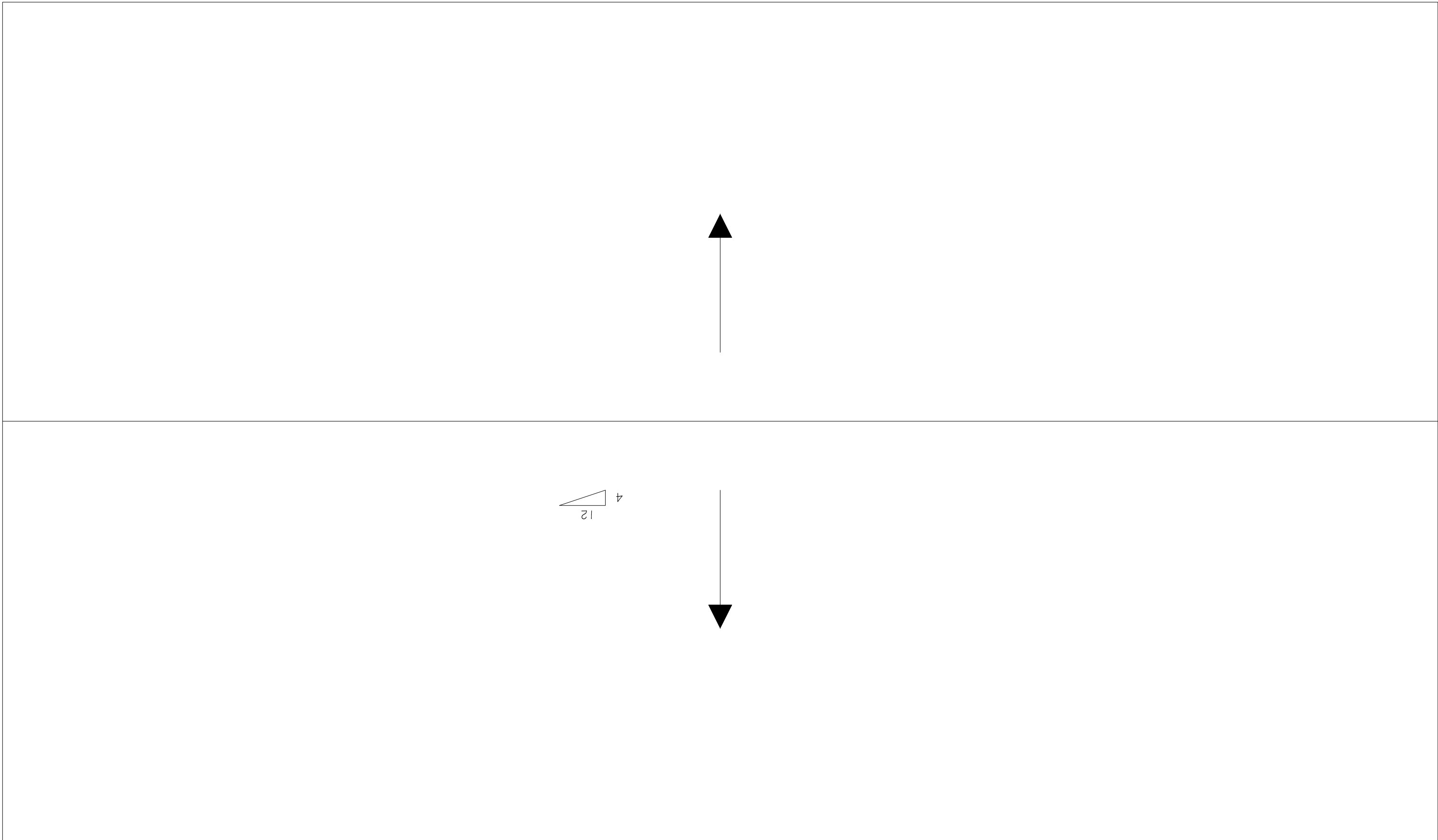
SCALE: 1/4" = 1'



M MONTANA
STATE UNIVERSITY
CAMPUS PLANNING,
DESIGN & CONSTRUCTION
BOZEMAN, MONTANA
PHONE: 406.994.5413 FAX: 406.994.5665

INDEX #
39
BUILDING #
523102

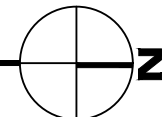
Dec 20, 2016 - 1:13pm - 523102_AR.dwg
H:\Family Housing\East Julia Martin Apartments\Building Plan - Book Copy



1

EAST JULIA MARTIN APARTMENTS - ROOF LEVEL

SCALE: 1/4" = 1'



M MONTANA
STATE UNIVERSITY
CAMPUS PLANNING,
DESIGN & CONSTRUCTION
BOZEMAN, MONTANA
PHONE: 406.994.5413 FAX: 406.994.5665

INDEX #
39
BUILDING #
523102