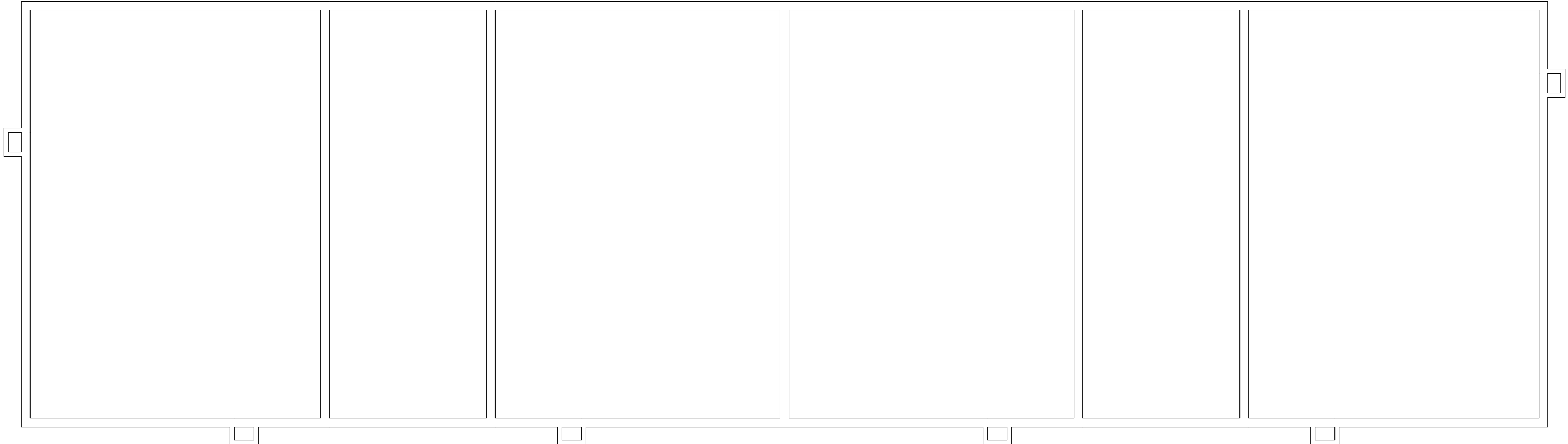


Dec 20, 2016 - 1:11pm - 523101\_AB.dwg  
H:\Family Housing\East Julia Martin Apartments\Building Plan - Book Copy



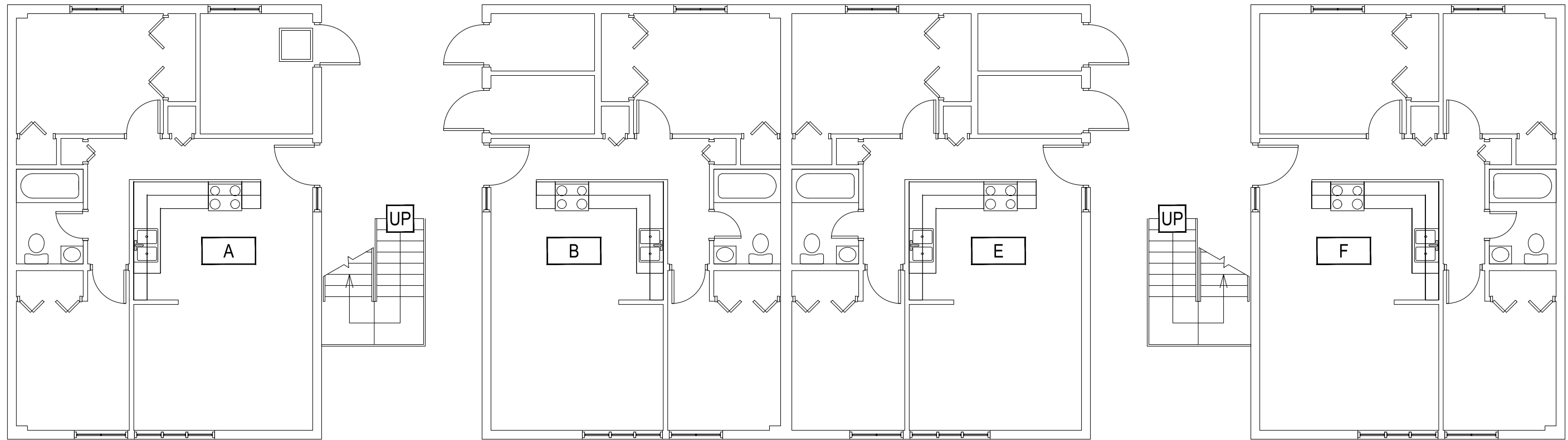
1 EAST JULIA MARTIN APARTMENTS - BASEMENT LEVEL  
SCALE: 1/8" = 1'



**M** MONTANA  
STATE UNIVERSITY  
CAMPUS PLANNING,  
DESIGN & CONSTRUCTION  
BOZEMAN, MONTANA  
PHONE: 406.994.5413 FAX: 406.994.5665

INDEX #  
**39**  
BUILDING #  
**523101**

Dec 20, 2016 - 1:11pm - 523101\_A1.dwg  
H:\Family Housing\East Julia Martin Apartments\Building Plan - Book Copy



1

EAST JULIA MARTIN APARTMENTS - FIRST LEVEL

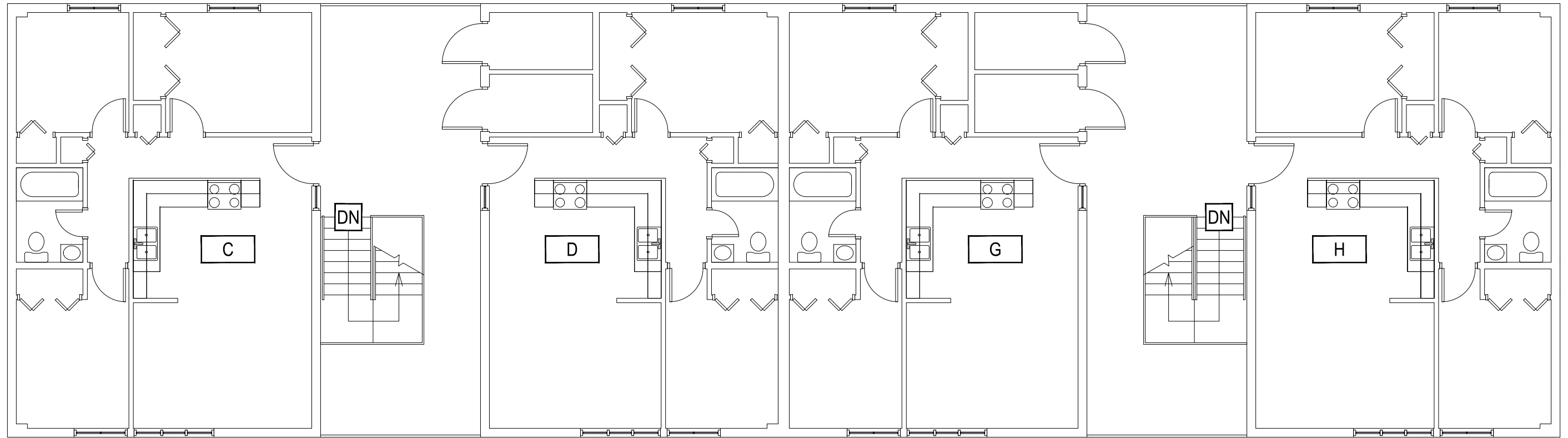
SCALE: 1/8" = 1'



**M** MONTANA  
STATE UNIVERSITY  
CAMPUS PLANNING,  
DESIGN & CONSTRUCTION  
BOZEMAN, MONTANA  
PHONE: 406.994.5413 FAX: 406.994.5665

INDEX #  
**39**  
BUILDING #  
**523101**

Dec 20, 2016 - 1:11pm - 523101\_A2.dwg  
H:\Family Housing\East Julia Martin Apartments\Building Plan - Book Copy



1

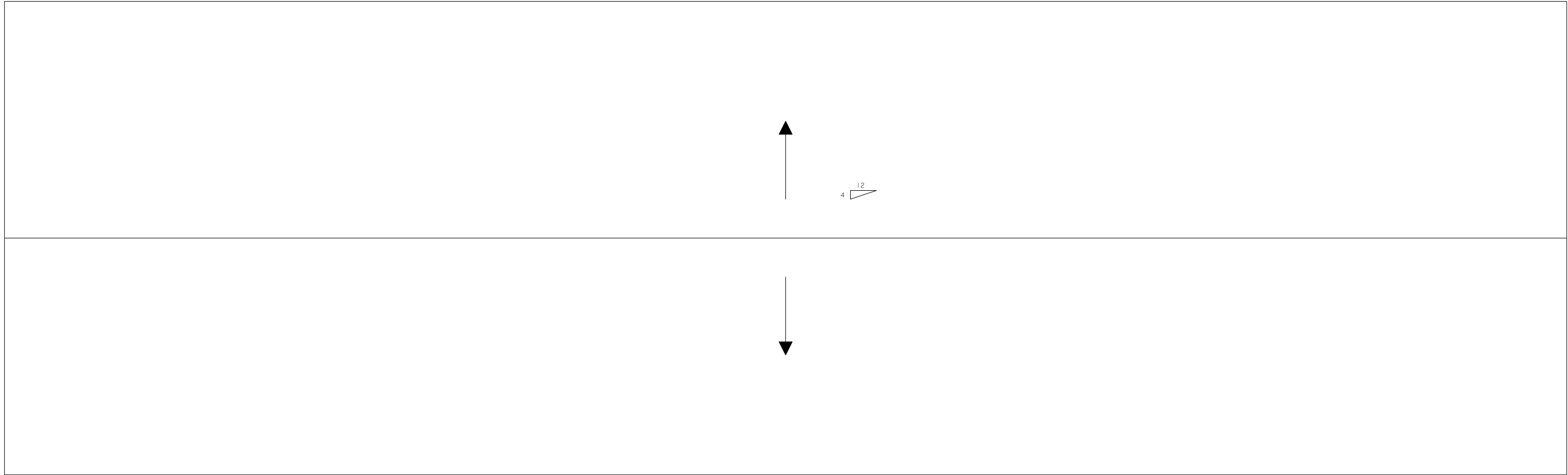
**EAST JULIA MARTIN APARTMENTS - SECOND LEVEL**  
SCALE: 1/8" = 1'



**M** MONTANA  
STATE UNIVERSITY  
CAMPUS PLANNING,  
DESIGN & CONSTRUCTION  
BOZEMAN, MONTANA  
PHONE: 406.994.5413 FAX: 406.994.5665

INDEX #  
**39**  
BUILDING #  
**523101**

Dec 20, 2016 - 1:11pm - 523101\_AR.dwg  
H:\Family Housing\East Julia Martin Apartments\Building Plan - Book Copy



1

EAST JULIA MARTIN APARTMENTS - ROOF LEVEL

SCALE: 1/8" = 1'



**M** MONTANA  
STATE UNIVERSITY  
CAMPUS PLANNING,  
DESIGN & CONSTRUCTION  
BOZEMAN, MONTANA  
PHONE: 406.994.5413 FAX: 406.994.5665

INDEX #	<b>39</b>
BUILDING #	<b>523101</b>