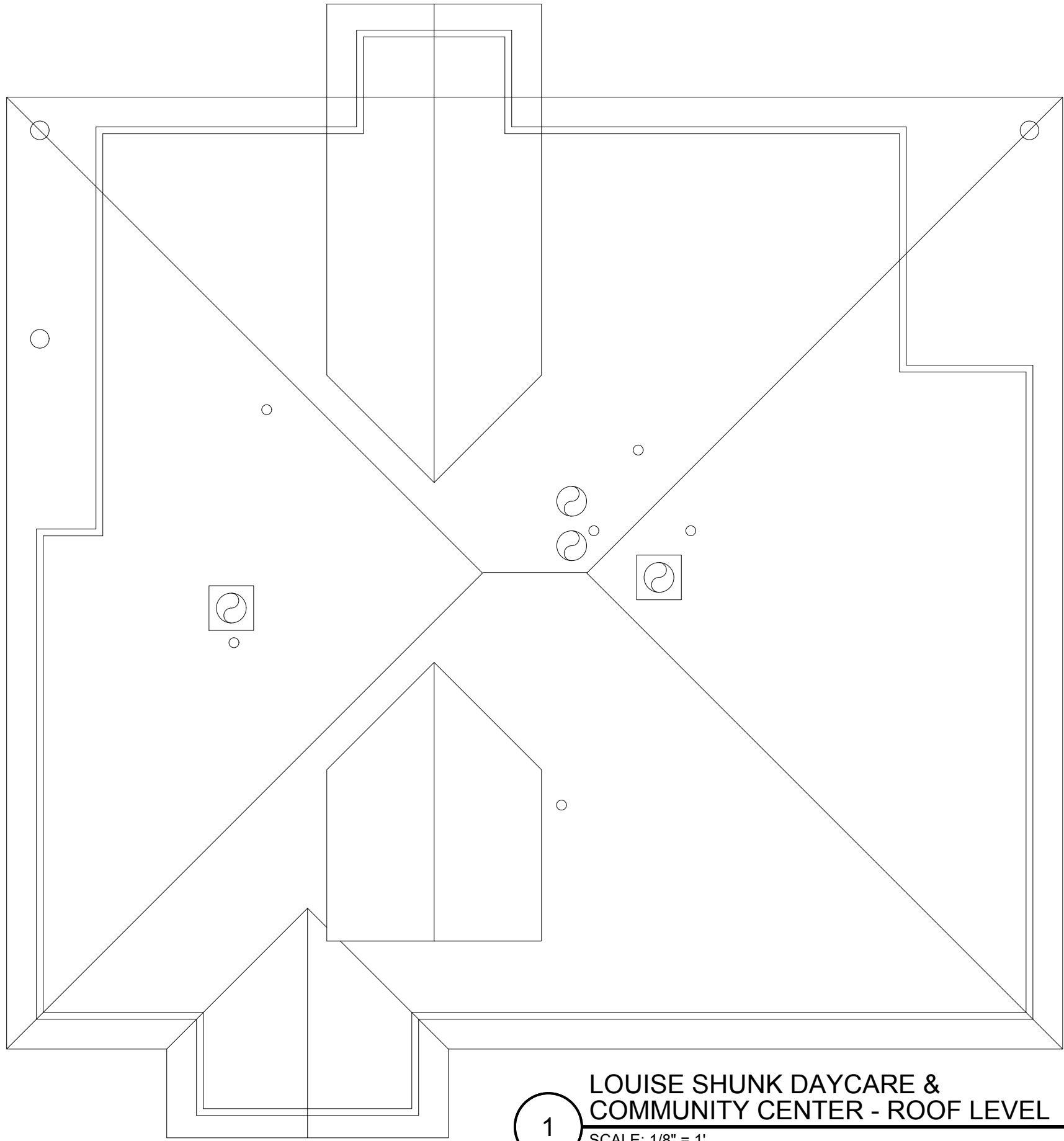


1

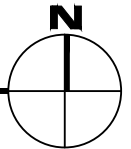
LOUISE SHUNK DAYCARE &
COMMUNITY CENTER - FIRST LEVEL

SCALE: 1/8" = 1'





1
LOUISE SHUNK DAYCARE & COMMUNITY CENTER - ROOF LEVEL
 SCALE: 1/8" = 1'



Dec 20, 2016 - 4:02pm - 512_AR.dwg
 H:\Louise Shunk Daycare and Community Center\Building Plan - Book Copy

M MONTANA
 STATE UNIVERSITY
 CAMPUS PLANNING,
 DESIGN & CONSTRUCTION
 BOZEMAN, MONTANA
 PHONE: 406.994.5413 FAX: 406.994.5665

INDEX #	46
BUILDING #	512