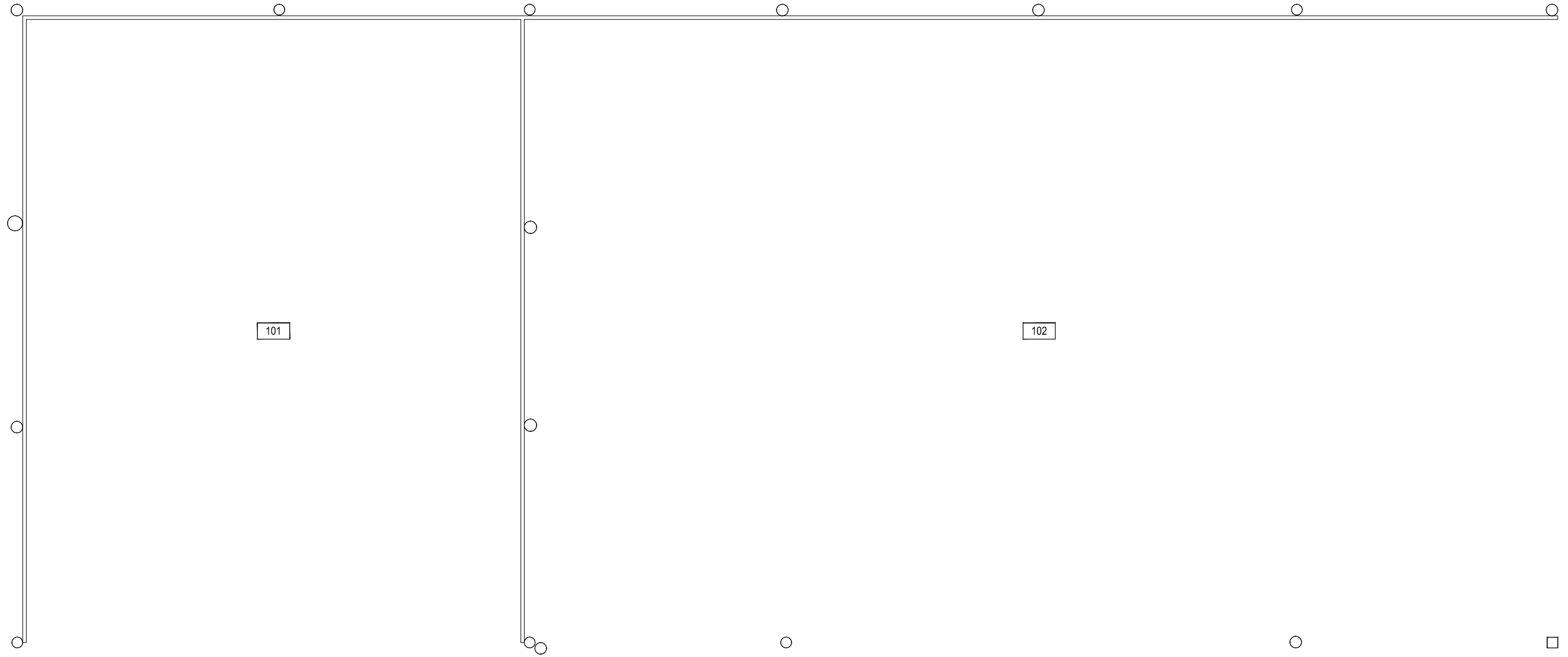


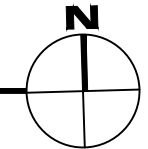
Aug 15, 2012 - 10:32am - 454-A1.dwg  
C:\Users\gruner\AppData\Local\Temp\AcPublish\_5412\



1

NUTRITION CENTER OPEN HAY SHED - FIRST LEVEL

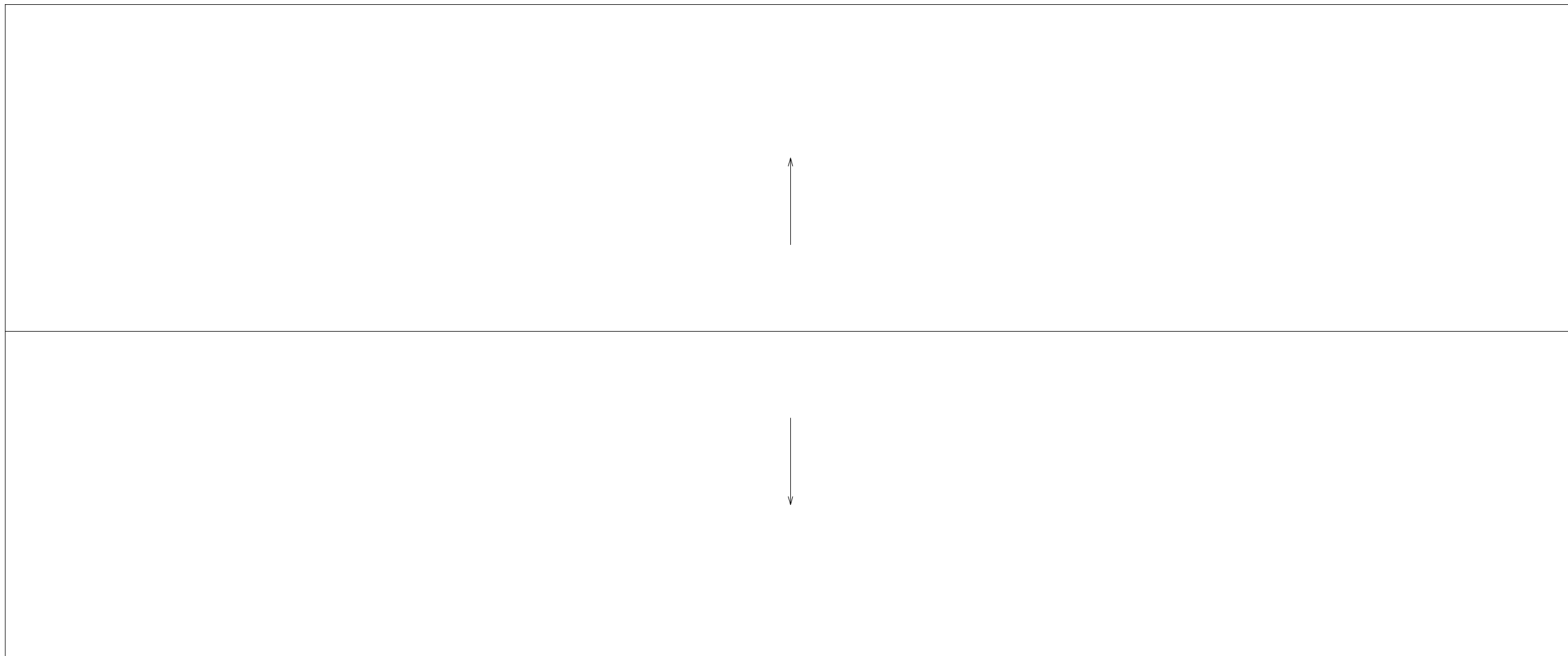
SCALE: 3/16" = 1'



**M** MONTANA  
STATE UNIVERSITY  
FACILITIES PLANNING,  
DESIGN & CONSTRUCTION  
BOZEMAN, MONTANA  
PHONE: 406.994.4131 FAX: 406.994.6572

INDEX #	<b>83</b>
BUILDING #	<b>454</b>

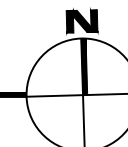
Aug 15, 2012 - 10:32am - 454-AR.dwg  
E:\Nutrition Center Open Hay Shed\Bldg Plan Book\



1

NUTRITION CENTER OPEN HAY SHED - ROOF LEVEL

SCALE: 3/16" = 1'



**M** MONTANA  
STATE UNIVERSITY  
FACILITIES PLANNING,  
DESIGN & CONSTRUCTION  
BOZEMAN, MONTANA  
PHONE: 406.994.4131 FAX: 406.994.6572

INDEX #	<b>83</b>
BUILDING #	<b>454</b>