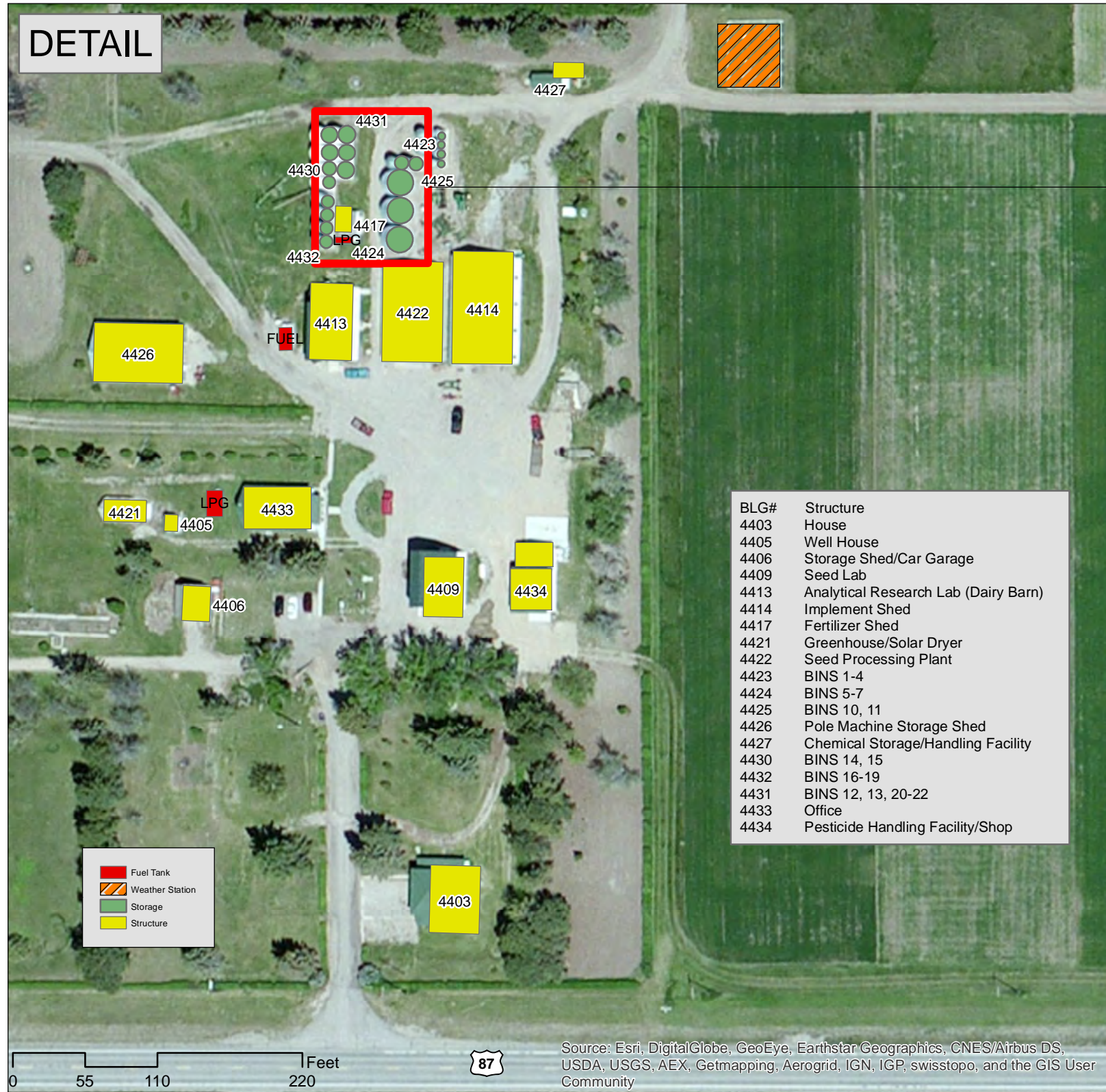
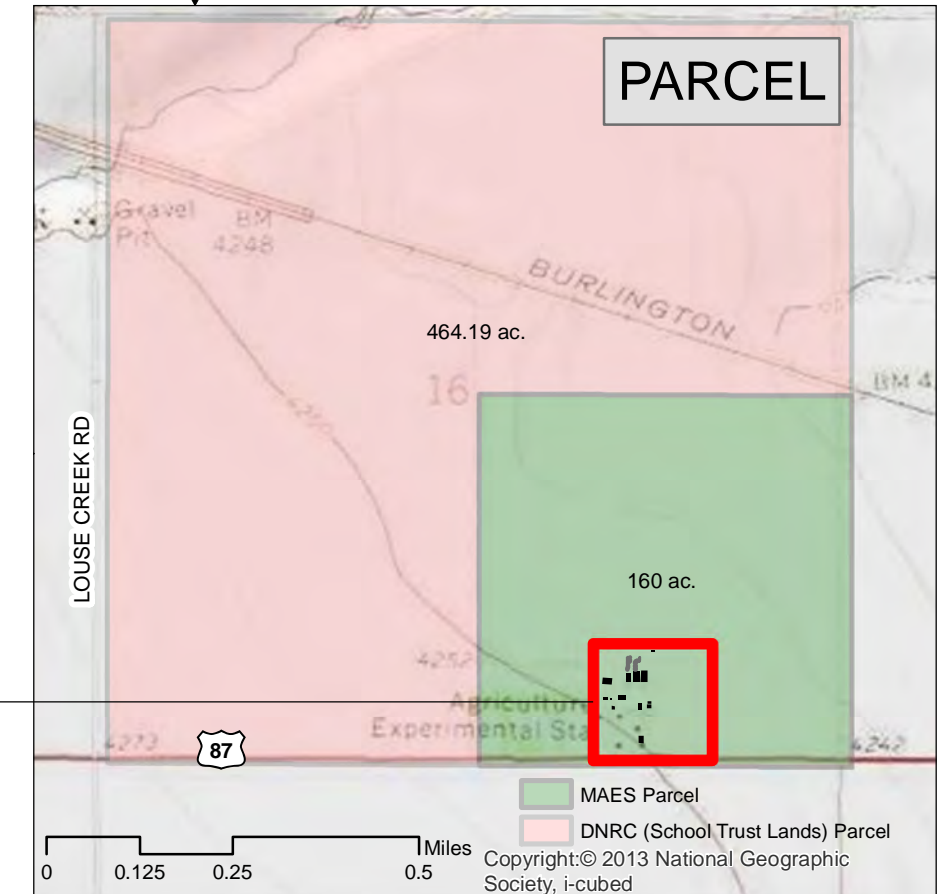
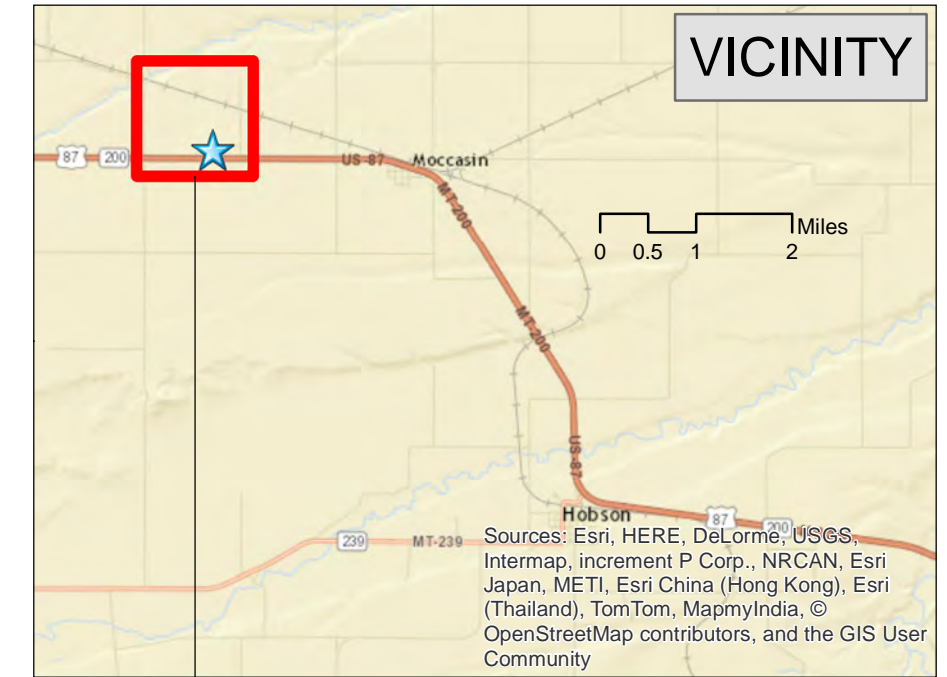


Montana AES CARC Moccasin



BLG#	Structure
4403	House
4405	Well House
4406	Storage Shed/Car Garage
4409	Seed Lab
4413	Analytical Research Lab (Dairy Barn)
4414	Implement Shed
4417	Fertilizer Shed
4421	Greenhouse/Solar Dryer
4422	Seed Processing Plant
4423	BINS 1-4
4424	BINS 5-7
4425	BINS 10, 11
4426	Pole Machine Storage Shed
4427	Chemical Storage/Handling Facility
4430	BINS 14, 15
4432	BINS 16-19
4431	BINS 12, 13, 20-22
4433	Office
4434	Pesticide Handling Facility/Shop

BIN#	BIN SIZE	VARIETY
1	100	HOCKETT
2	100	EMPTY
3	100	HOCKETT
4	200	OTANA
5	2500	STORAGE
6	2500	LAVINA
7	2500	STORAGE
10	550	HAXBY
11	550	HAXBY
12	1000	HOCKETT
13	1000	GENOU
14	600	HAYBET
15	600	LUCILE
16	550	EMPTY
17	550	HAYBET
18	550	WILLOW CREEK
19	550	EMPTY
20	1000	VIDA
21	1000	EMPTY
22	1000	CHOTEAU



2015-06-18
 Drawn by Christian Black
 Source: Montana GIS Portal <http://gisportal.msl.mt.gov>
 Facilities Inventory updated June 2015
 Contact CPDC Analyst Matt Hume

47° 3' 21.71"N, 109° 57' 8.13"W
 47.056031, -109.952259
 52583 US HWY 87
 MOCCASIN, MT 59462



MONTANA STATE UNIVERSITY

**Montana State University
 Campus Planning, Design & Construction**

This product is for informational purposes and may not have been prepared for, or be suitable for legal, engineering or surveying purposes. Users of this information should review or consult the primary data and information sources to ascertain the usability of the information.

Building and Site Photos of CARC

Photos originally taken 4/2011, verified to be depict buildings' current use and appearance 5/19/2015. Updated photos taken after 2011 are dated.

Pictures ordered by building number except where noted



Sections

1. Building Photos – Interior and Exterior Photos
2. Structures on Site that Are Not Buildings – Bins, Propane Tanks
3. Other Site Issues

Interior and Exterior Photos of Buildings

1. BUILDING PHOTOS



Bldg #4403 - House



Bldg # 4405 – Well House





Bldg #4413 – Analytical Research Lab (was Dairy Barn)



Bldg #4413 – Analytical Research Lab (was Dairy Barn)



Bldg #4413 – Analytical Research Lab (was Dairy Barn)



Bldg #4413 – Analytical Research Lab (was Dairy Barn)



Bldg #4413 – Analytical Research Lab (was Dairy Barn)



Photo taken 2013 – Entire floor is now concrete

Bldg #4414 – Implement Shed



Photo taken 2013 - Entire floor is now concrete

Bldg #4414 - Implement Shed



Bldg #4417 - Fertilizer Shed with Unnumbered Propane Tank



Bldg #4417 - Fertilizer Shed



Bldg #4421 - Greenhouse/Solar Dryer



Bldg #4421 - Greenhouse/Solar Dryer



Bldg #4422 - Seed Processing Plant



Bldg #4422 – Seed Processing Plant



Bldg #4422 – Seed Processing Plant

Building #s 4423 to 4425 are grain bins and located in section 2. *Structures on Site that Are Not Buildings*



Bldg #4426 – Pole Machine Storage Shed



Bldg #4426 – Pole Machine Storage Shed



Bldg #4427 – Chemical Shed



Bldg #4427 – Chemical Storage / Handling Facility

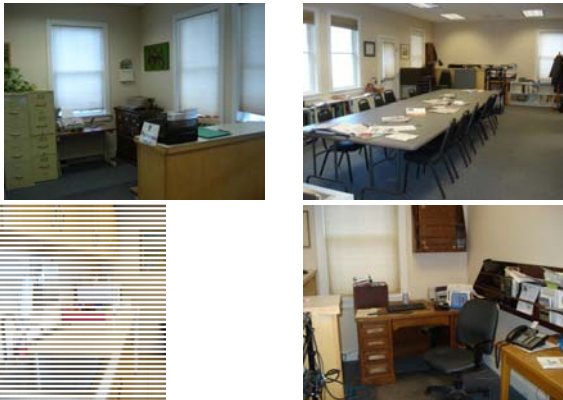


Bldg #4427 – Chemical Storage / Handling Facility

Building #s 4430 to 4432 are grain bins and located in section 2. Structures on Site that Are Not Buildings



Bldg #4433 – Office



Bldg #4433 – Office



Bldg #4433 – Office



Bldg #4434 – Pesticide Handling / Shop



Bldg #4434 – Pesticide Handling / Shop



Bldg #4434 – Pesticide Handling / Shop



Bldg #4434 – Pesticide Handling / Shop



Bldg #4434

Bins, Propane Tanks, Other
2. STRUCTURES ON SITE THAT ARE NOT BUILDINGS



**Bldg #4423 – bins numbered 1 to 4;
Bldg #4424 – bins numbered 5 to 7**



Part of Bldg #4425 – Brock bins numbered 8 to 11



**Part of Bldg #4431 – 2 of 5 Wheatland bins 12 to 13;
Bldg #4430 –Wheatland bins 14 to 15;
Bldg #4432 –Brock grain bins 16 to 19**



Part of Bldg #4431 – 3 of 5 Wheatland bins 20 to 22



**Part of Bldg #4431 – 2 Wheatland bins 12, 13;
Bldg #4430 – 2 Wheatland bins 14, 15;
Part of Bldg #4432 – 2 Brock bins 16, 17**



Fuel Tank on West Side of Bldg #4413



Propane Tank next to Bldg # 4409

Fencing, drainage issues

3. OTHER SITE ISSUES



No fence on South Side of Land. South side is directly adjacent to the highway.



There are a few rows of bushes for wind protection. After winter, the snowpack can delay planting or other field work



Fencing deteriorating, ground sagging near fence



