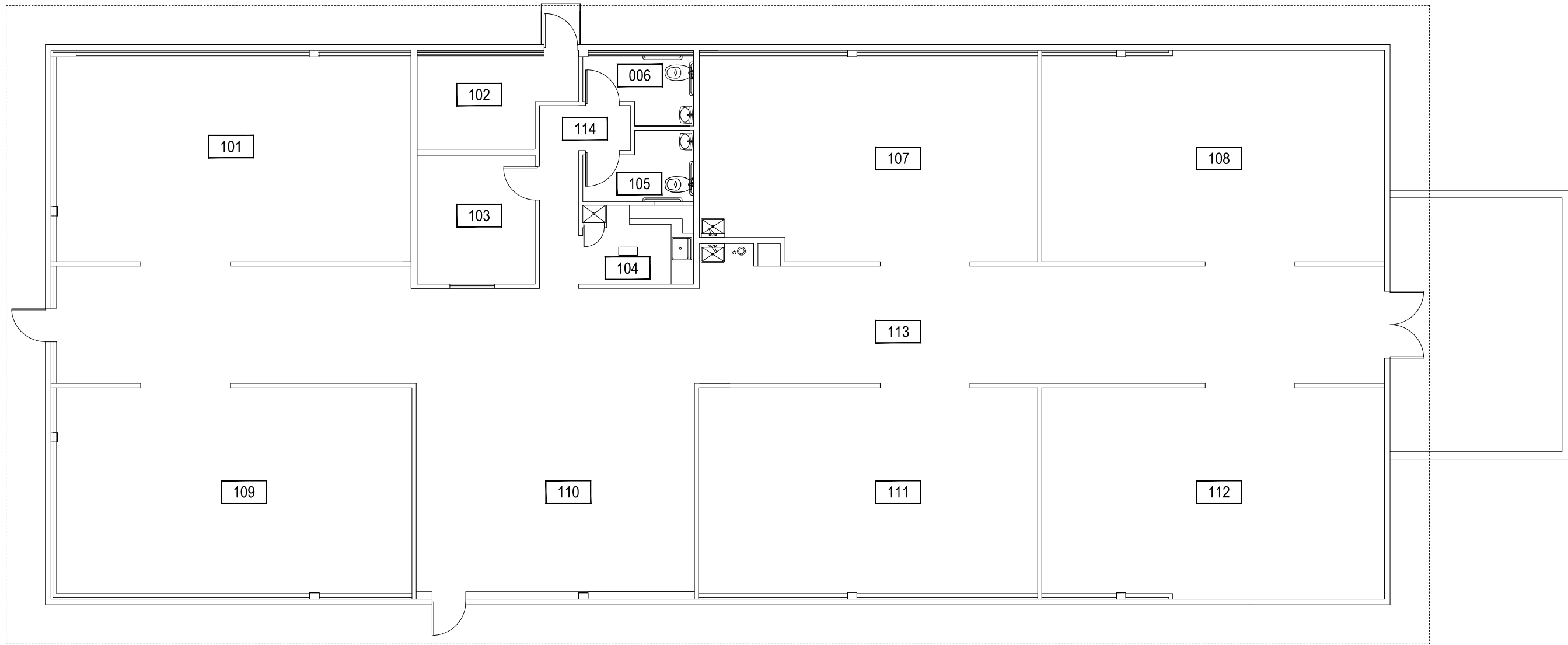


Oct 15, 2012 - 9:53am - 433_A1.dwg
C:\Users\gary.gramer\appdata\local\temp\AcPublish_6000\



1

MELVIN GRADUATE ARTS STUDIO - FIRST LEVEL

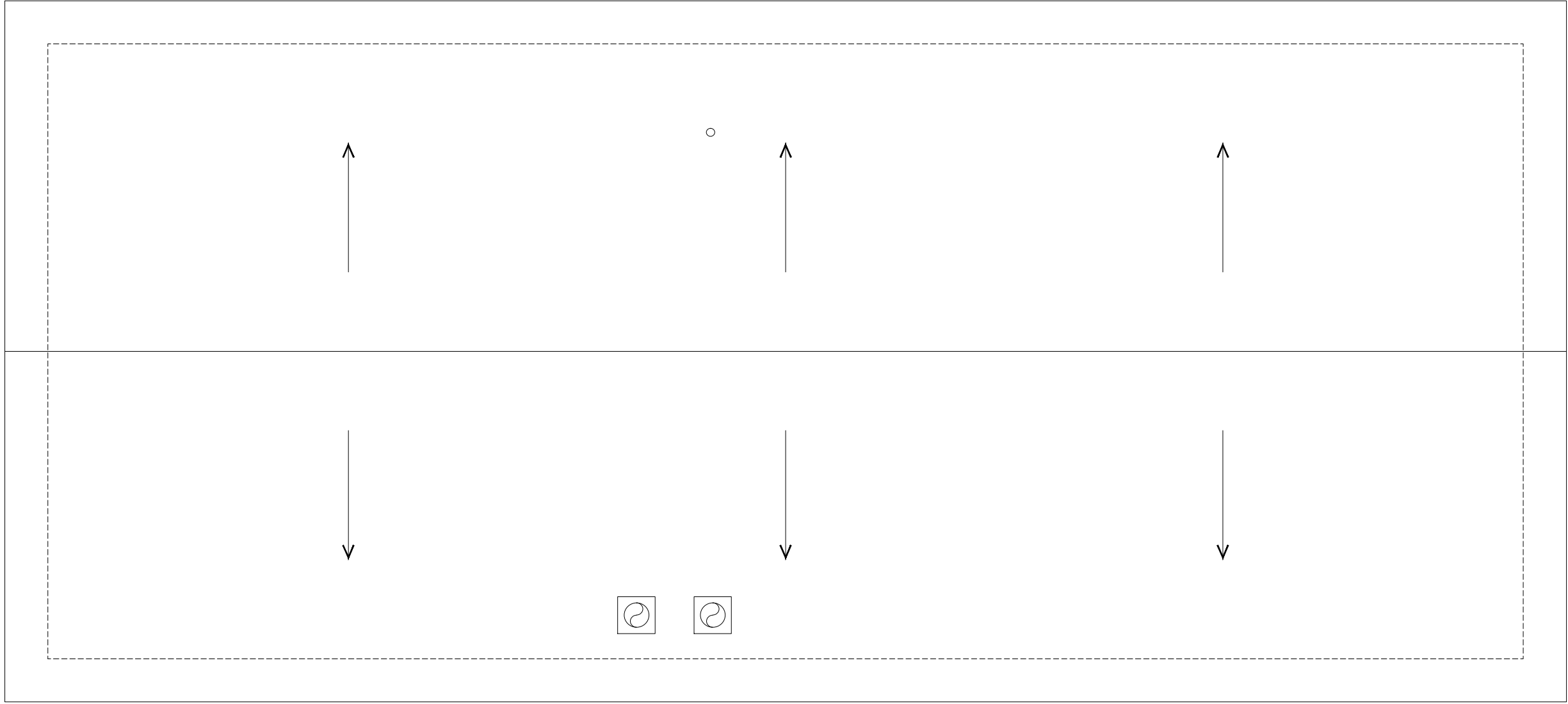
SCALE: 1" = 10'



M MONTANA
STATE UNIVERSITY
FACILITIES PLANNING,
DESIGN & CONSTRUCTION
BOZEMAN, MONTANA
PHONE: 406.994.4131 FAX: 406.994.6572

INDEX #
77
BUILDING #
433

Oct 15, 2012 - 9:53am - 433_AR.dwg
H:\Melvin Graduate Art Studio\Building Plan - Book Copy\



1

MELVIN GRADUATE ARTS STUDIO - ROOF LEVEL

SCALE: 1" = 10'



M MONTANA
STATE UNIVERSITY
FACILITIES PLANNING,
DESIGN & CONSTRUCTION
BOZEMAN, MONTANA
PHONE: 406.994.4131 FAX: 406.994.6572

INDEX #	77
BUILDING #	433