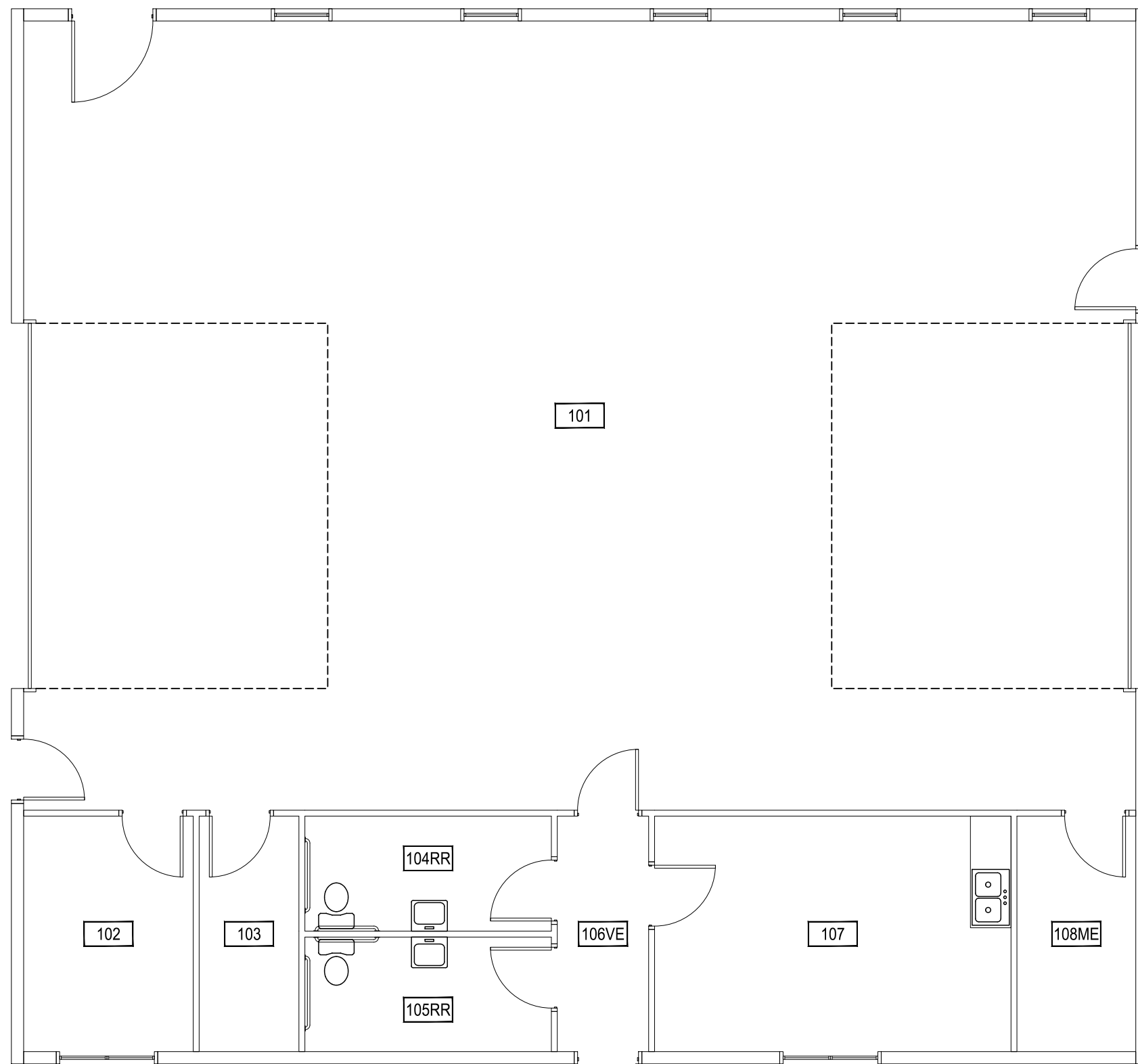


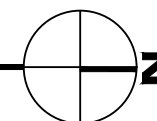
Dec 16, 2016 - 9:48am - 416_A1.dwg
H:\Bart Farm Shop\Building Plan - Book Copy\



1

BART FARM SHOP - FIRST LEVEL

SCALE: 5/32" = 1'



M MONTANA
STATE UNIVERSITY
FACILITIES PLANNING,
DESIGN AND CONSTRUCTION
BOZEMAN, MONTANA
PHONE: 406.994.4131 FAX: 406.994.6572

INDEX #
98
BUILDING #
416

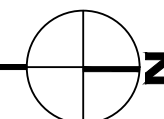
Dec 16, 2016 - 9:48am - 416_A2.dwg
H:\Bart Farm Shop\Building Plan - Book Copy\



1

BART FARM SHOP - MEZZANINE LEVEL

SCALE: 5/32" = 1'



M MONTANA
STATE UNIVERSITY
FACILITIES PLANNING,
DESIGN AND CONSTRUCTION
BOZEMAN, MONTANA
PHONE: 406.994.4131 FAX: 406.994.6572

INDEX #
98
BUILDING #
416

Dec 16, 2016 - 9:48am - 416_AIR.dwg
H:\Bart Farm Shop\Building Plan - Book Copy\

1

BART FARM SHOP - ROOF LEVEL

SCALE: 5/32" = 1'

