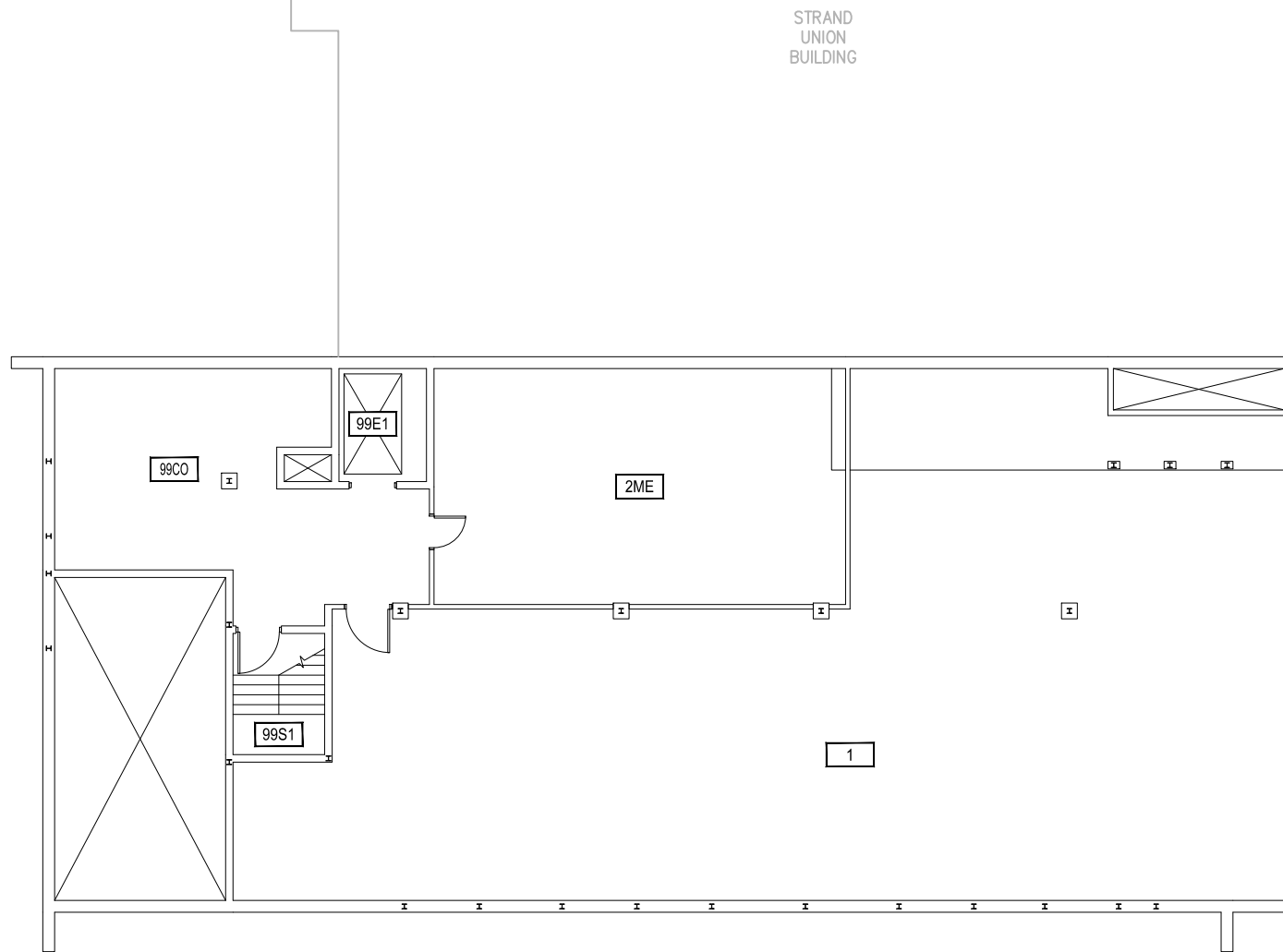


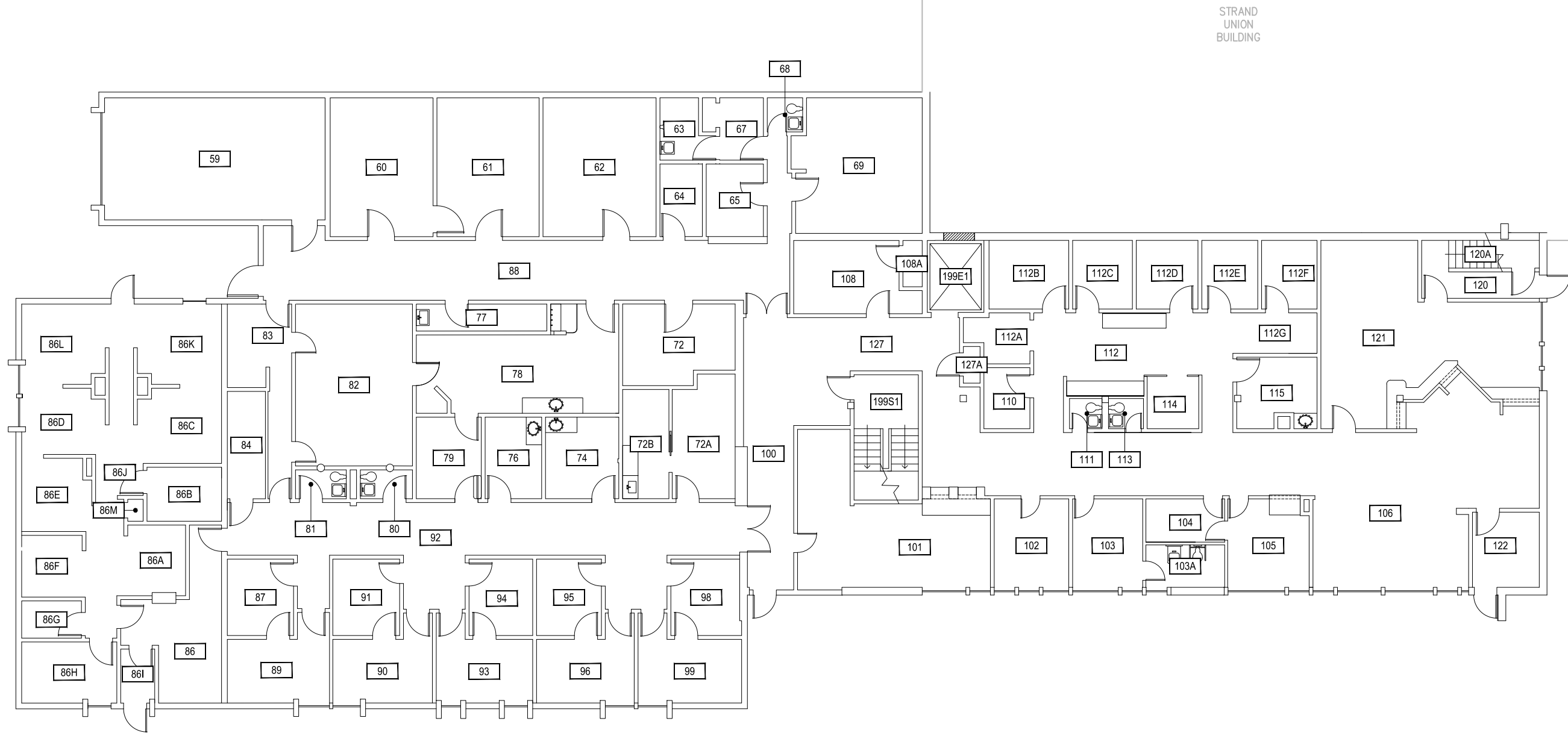
Mar 28, 2016 - 9:39am - 346_AB.dwg
H:\Swingle Health Center\Building Plan - Book Copy



1 SWINGLE HEALTH CENTER - BASEMENT LEVEL **2**
SCALE: 1" = 15'

M MONTANA
STATE UNIVERSITY
CAMPUS PLANNING,
DESIGN & CONSTRUCTION
BOZEMAN, MONTANA
PHONE: 406.994.5413 FAX: 406.994.5665

INDEX #
12
BUILDING #
346



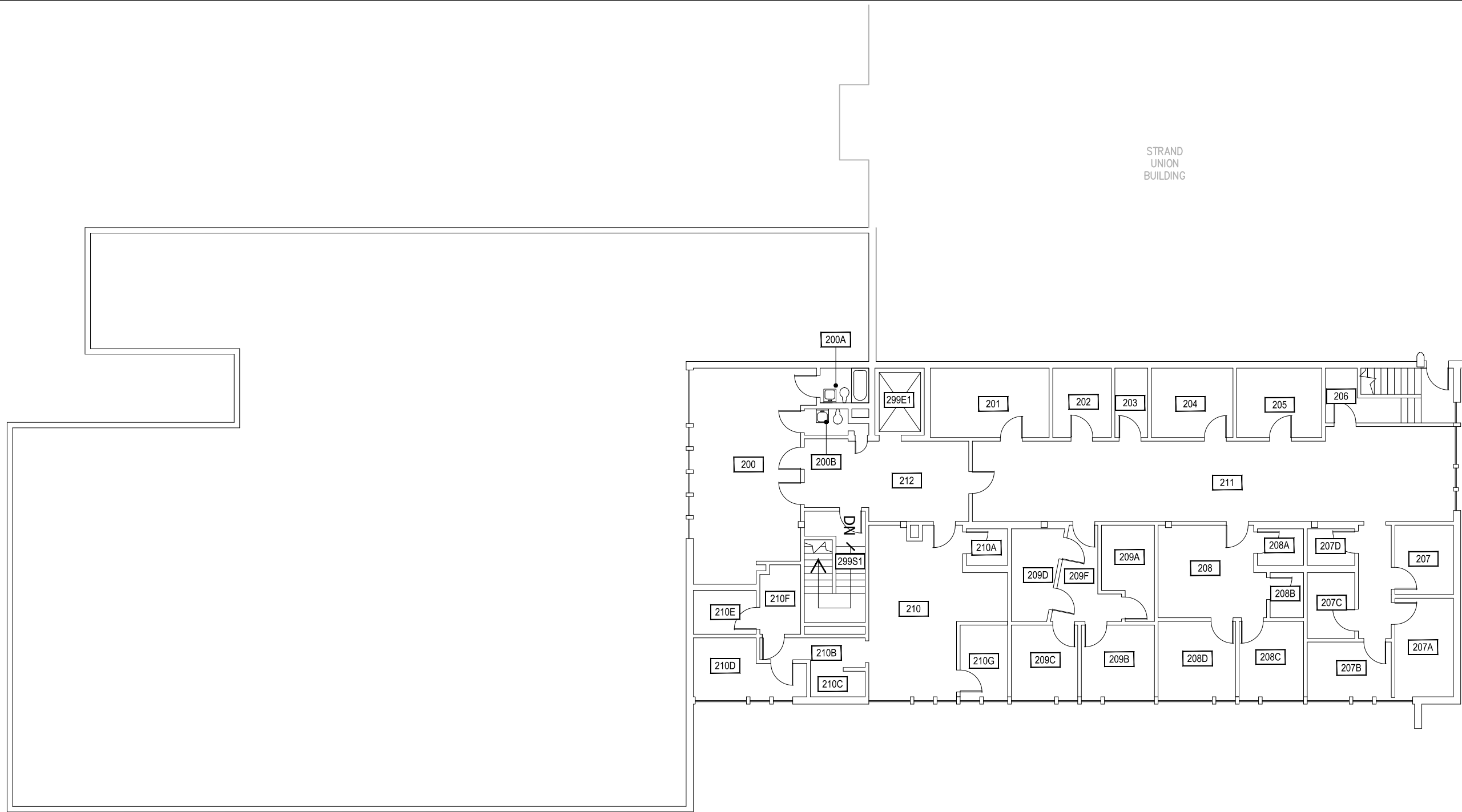
Mar 28, 2016 - 9:39am - 346_A1.dwg
 H:\Swingle Health Center\Building Plan - Book Copy

1
SWINGLE HEALTH CENTER - FIRST LEVEL
 SCALE: 1" = 15'



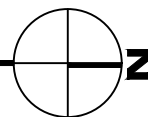
MONTANA STATE UNIVERSITY
 CAMPUS PLANNING,
 DESIGN & CONSTRUCTION
 BOZEMAN, MONTANA
PHONE: 406.994.5413 FAX: 406.994.5665

INDEX #	12
BUILDING #	346



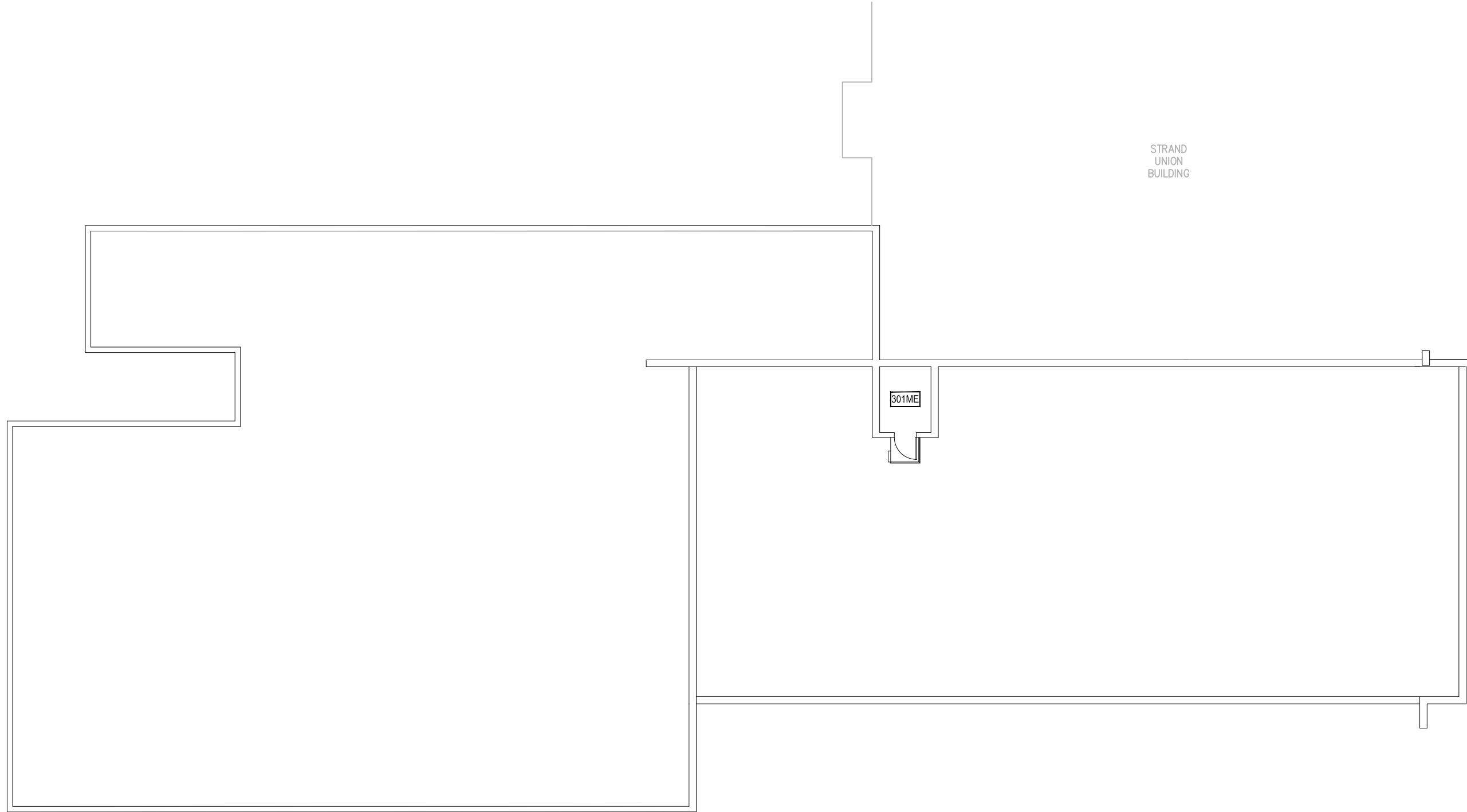
STRAND
UNION
BUILDING

1 SWINGLE HEALTH CENTER - SECOND LEVEL
SCALE: 1" = 15'



M MONTANA
STATE UNIVERSITY
CAMPUS PLANNING,
DESIGN & CONSTRUCTION
BOZEMAN, MONTANA
PHONE: 406.994.5413 FAX: 406.994.5665

INDEX #
12
BUILDING #
346

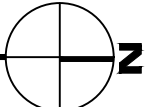


Mar 28, 2016 - 9:39am - 346_AP.dwg
 C:\Users\gary.gramer\appdata\local\temp\AcPublish_9916

1

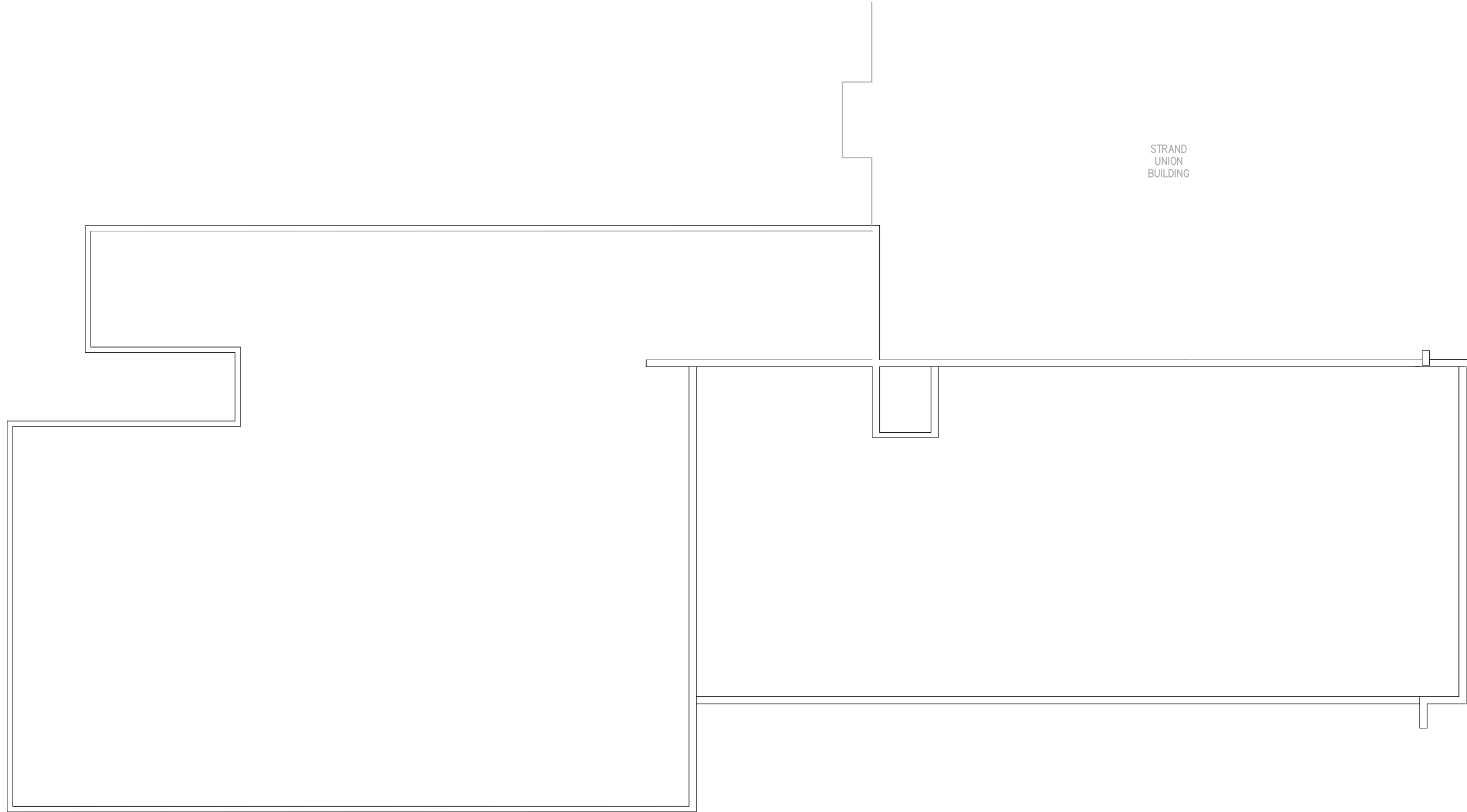
SWINGLE HEALTH CENTER - PENTHOUSE LEVEL

SCALE: 1" = 15'



M MONTANA
 STATE UNIVERSITY
 CAMPUS PLANNING,
 DESIGN & CONSTRUCTION
 BOZEMAN, MONTANA
 PHONE: 406.994.5413 FAX: 406.994.5665

INDEX #	12
BUILDING #	346



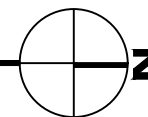
STRAND
UNION
BUILDING

Mar 28, 2016 - 9:39am - 346_AR.dwg
H:\Swingle Health Center\Building Plan - Book Copy

1

SWINGLE HEALTH CENTER - ROOF LEVEL

SCALE: 1" = 15'



M MONTANA
STATE UNIVERSITY
CAMPUS PLANNING,
DESIGN & CONSTRUCTION
BOZEMAN, MONTANA
PHONE: 406.994.5413 FAX: 406.994.5665

INDEX #

12

BUILDING #

346