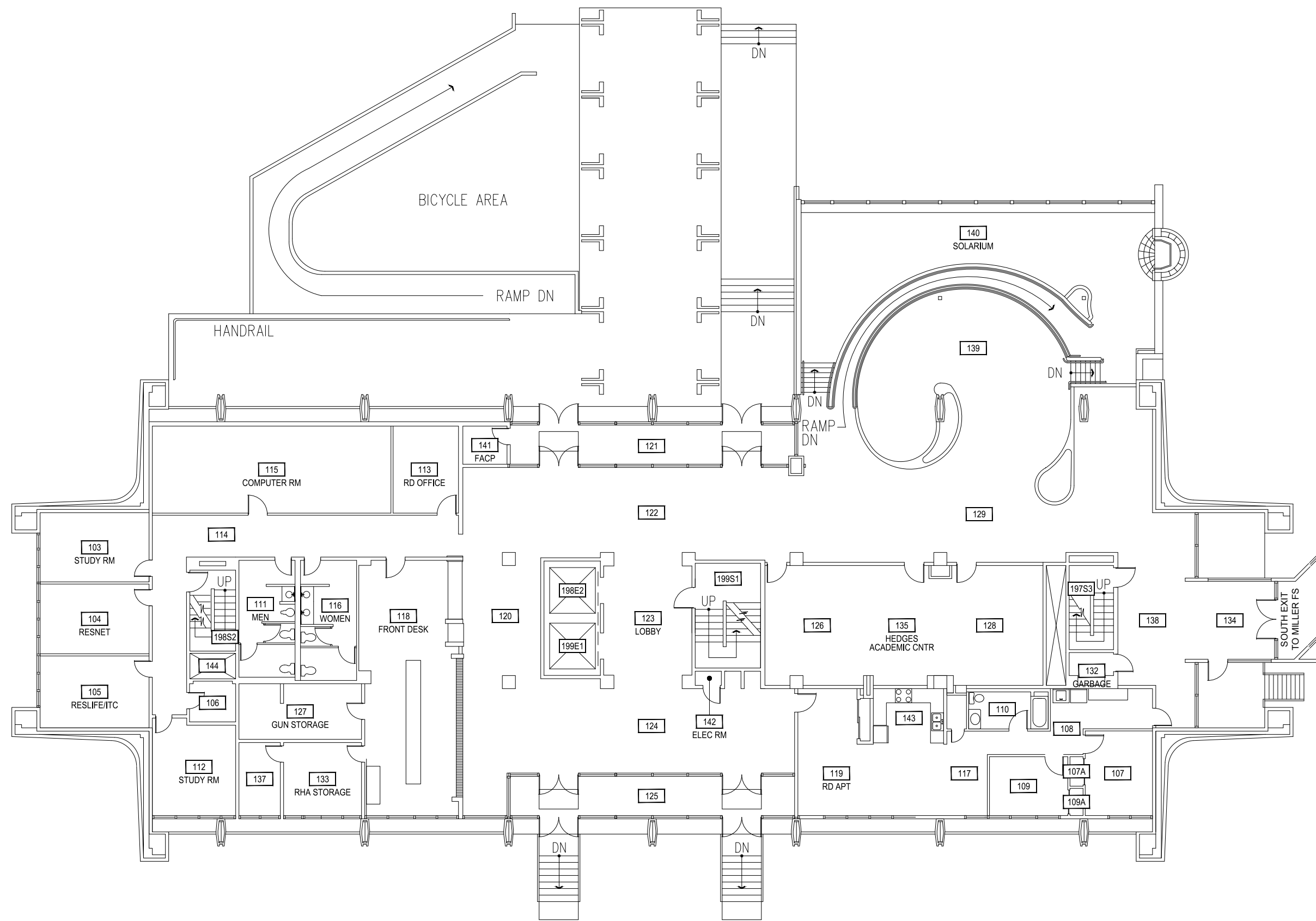


Dec 20, 2016 - 11:39am - 343\_AB.dwg  
H:\Hedges Dorms\North Hedges\Building Plan - Book Copy\

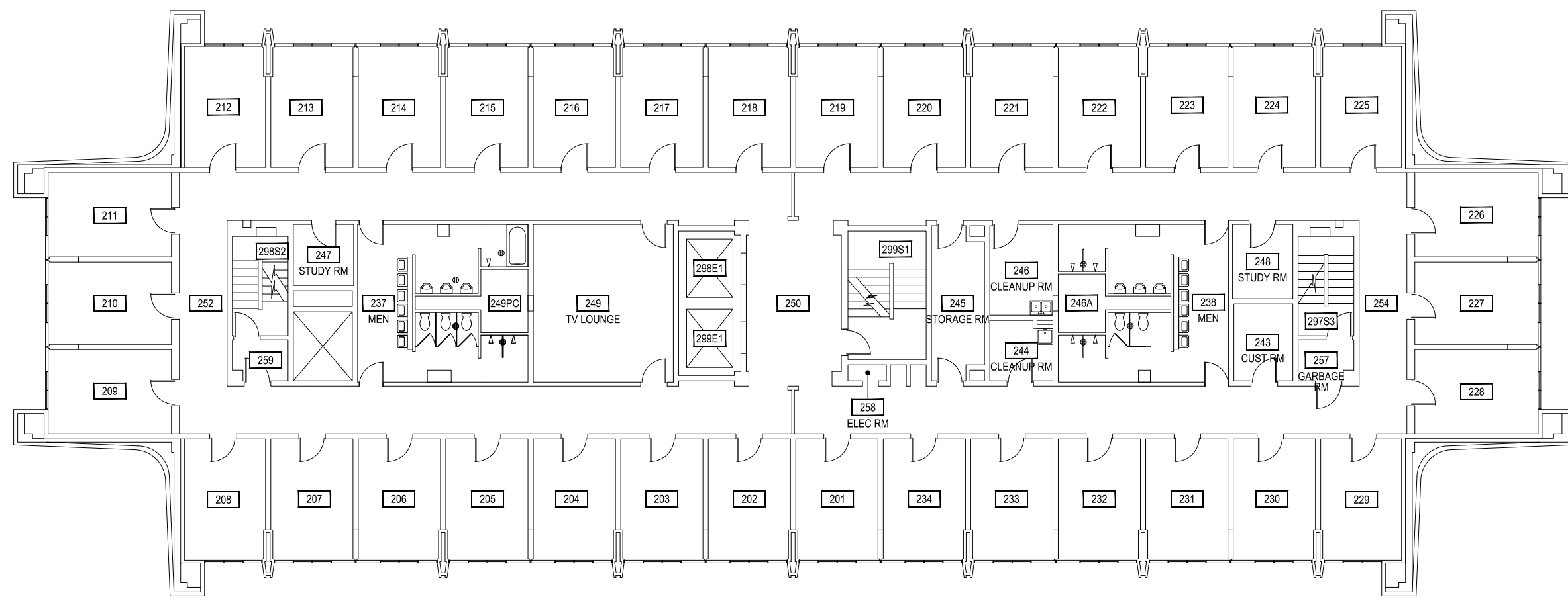
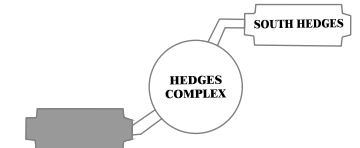
**1** NORTH HEDGES HALL - BASEMENT LEVEL **z**  
SCALE: 1/16" = 1'


**M** MONTANA STATE UNIVERSITY  
CAMPUS PLANNING,  
DESIGN & CONSTRUCTION  
BOZEMAN, MONTANA  
PHONE: 406.994.5413 FAX: 406.994.5665

INDEX # **36**  
BUILDING # **343**



**1** NORTH HEDGES HALL - FIRST LEVEL  
 SCALE: 1/16" = 1'

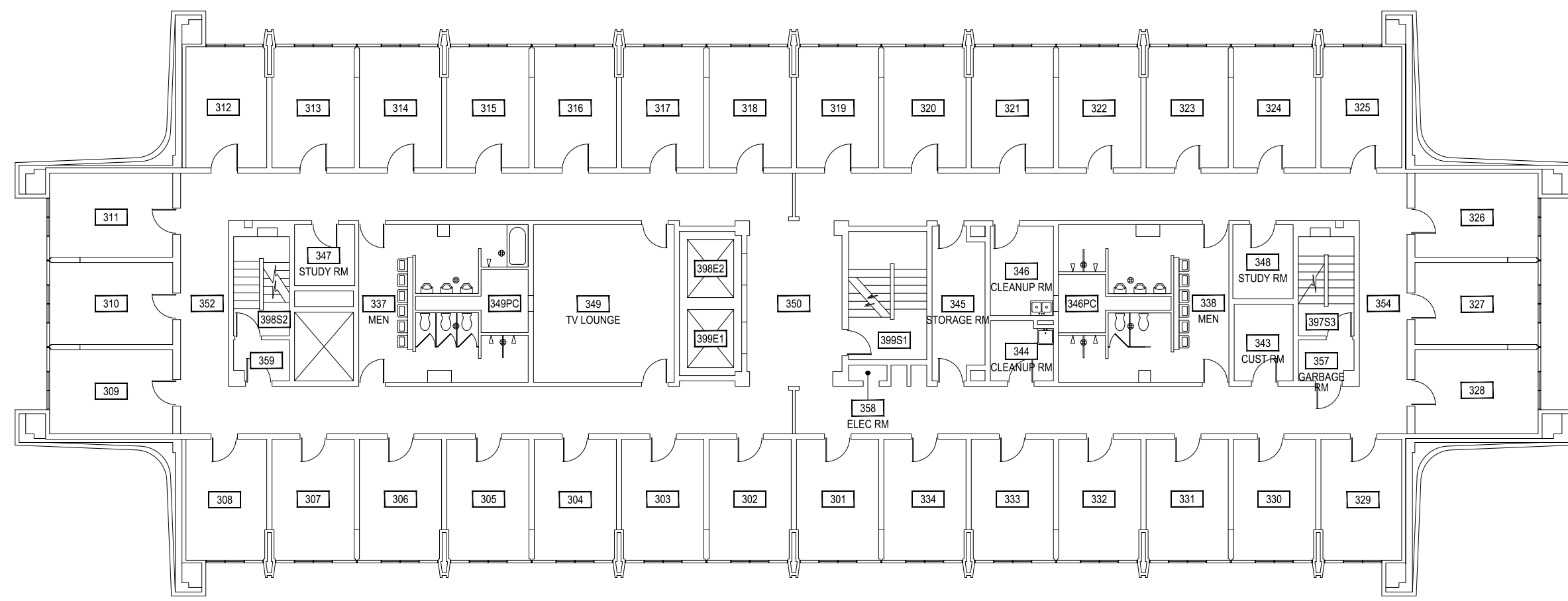
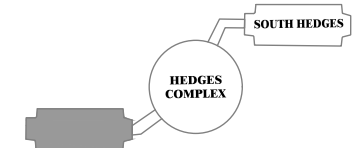


**1** NORTH HEDGES HALL - SECOND LEVEL 


SCALE: 1/16" = 1'

**M** MONTANA STATE UNIVERSITY  
 CAMPUS PLANNING,  
 DESIGN & CONSTRUCTION  
 BOZEMAN, MONTANA  
 PHONE: 406.994.5413 FAX: 406.994.5665

INDEX # **36**  
 BUILDING # **343**

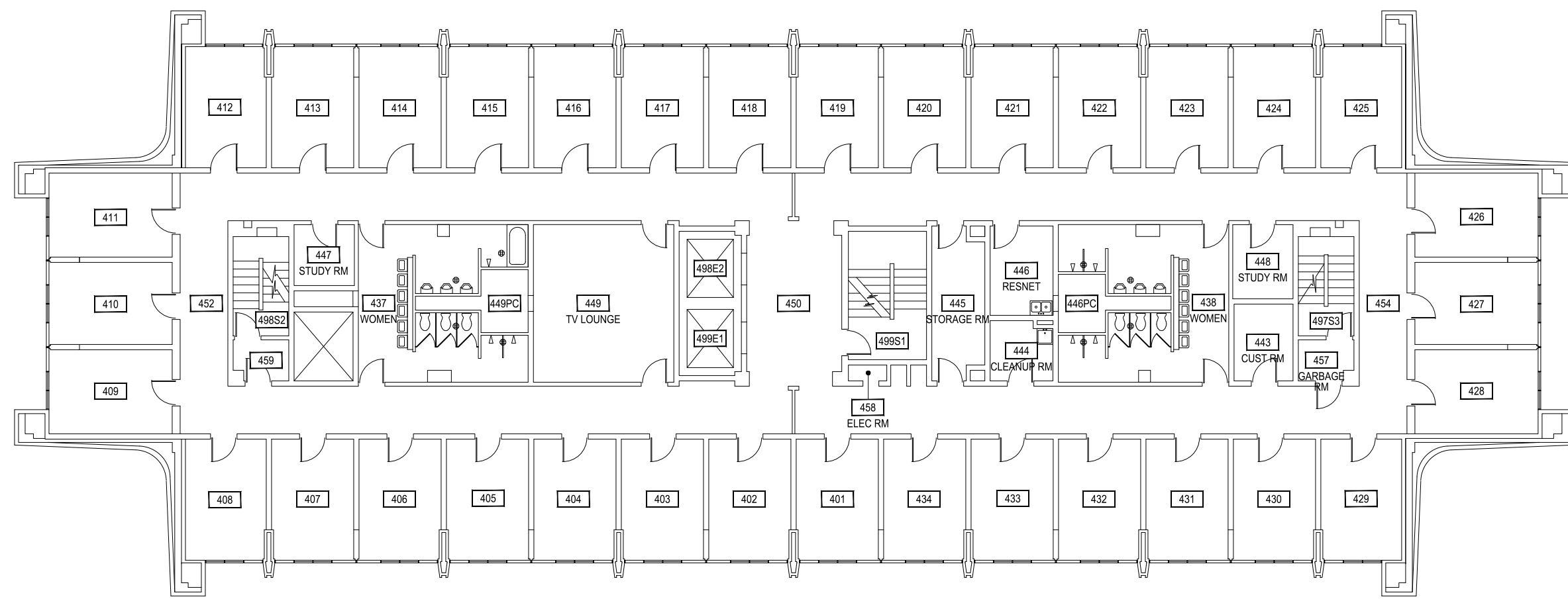
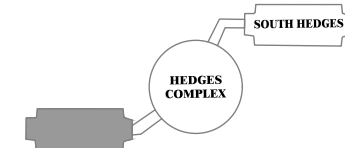



**1** NORTH HEDGES HALL - THIRD LEVEL  
 SCALE: 1/16" = 1'



Dec 20, 2016 - 11:39am - 343\_A3.dwg  
 H:\Hedges Dorms\North Hedges\Building Plan - Book Copy\

 <b>MONTANA STATE UNIVERSITY</b> CAMPUS PLANNING, DESIGN & CONSTRUCTION BOZEMAN, MONTANA PHONE: 406.994.5413 FAX: 406.994.5665	INDEX #
	<b>36</b>
	BUILDING #
	<b>343</b>



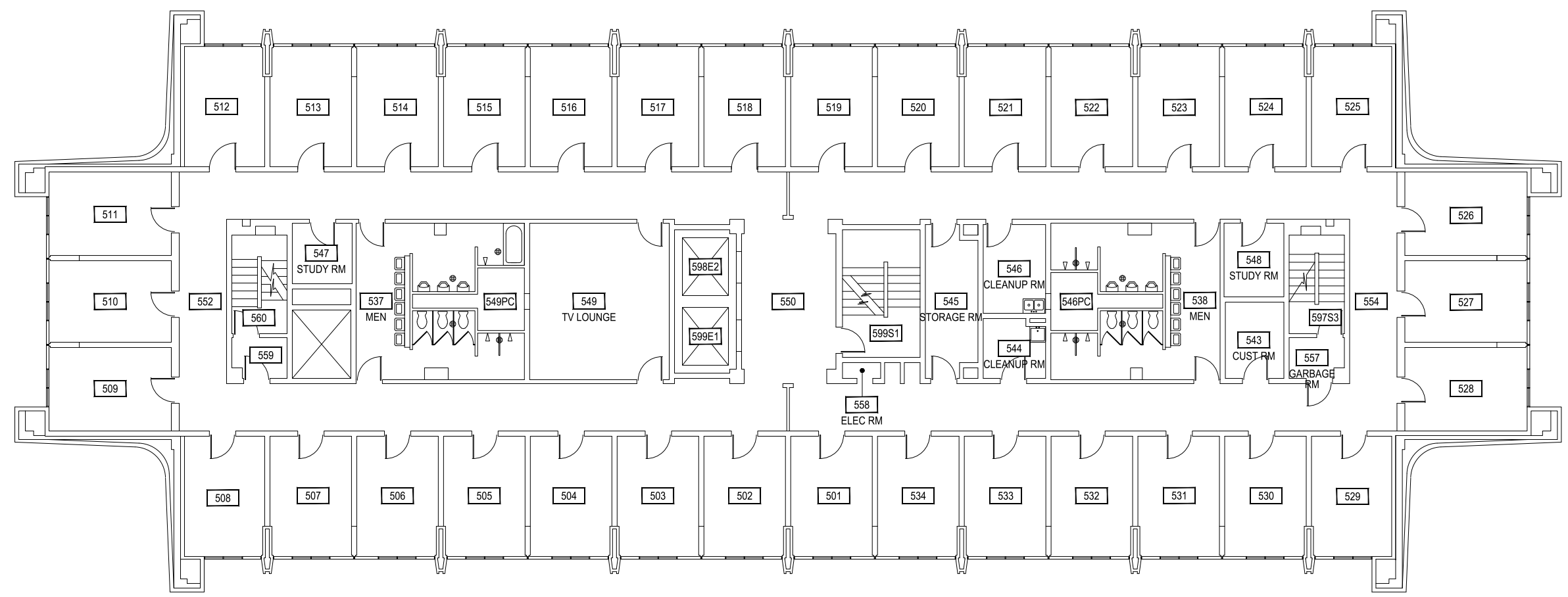
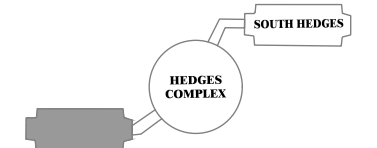
**1** NORTH HEDGES HALL - FOURTH LEVEL 


SCALE: 1/16" = 1'

**M** MONTANA STATE UNIVERSITY  
 CAMPUS PLANNING,  
 DESIGN & CONSTRUCTION  
 BOZEMAN, MONTANA  
 PHONE: 406.994.5413 FAX: 406.994.5665

INDEX # **36**  
 BUILDING # **343**

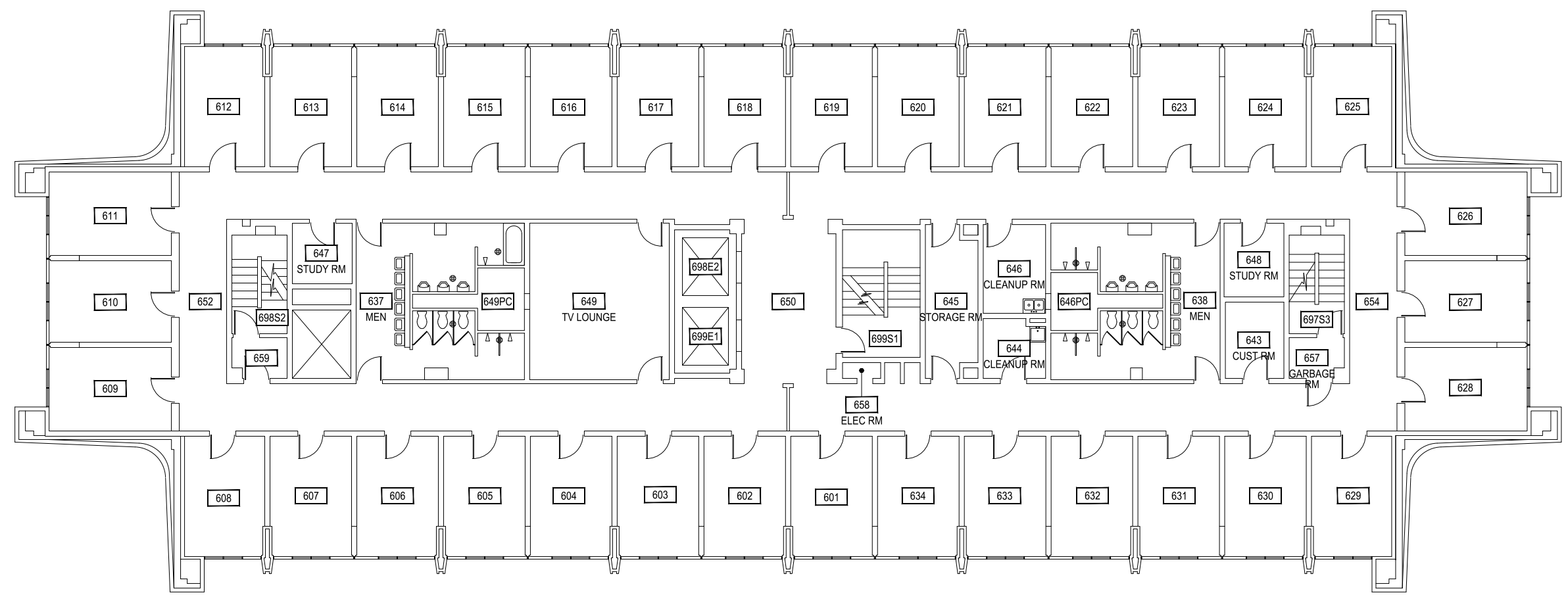
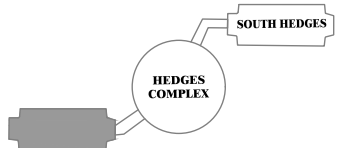
Dec 20, 2016 - 11:39am - 343\_A4.dwg  
 C:\Users\gary.gramer\appdata\local\temp\AcPublish\_14864\



**1** NORTH HEDGES HALL - FIFTH LEVEL  
 SCALE: 1/16" = 1' 

 <b>MONTANA STATE UNIVERSITY</b> CAMPUS PLANNING, DESIGN & CONSTRUCTION BOZEMAN, MONTANA PHONE: 406.994.5413 FAX: 406.994.5665	INDEX #	<b>36</b>
	BUILDING #	<b>343</b>

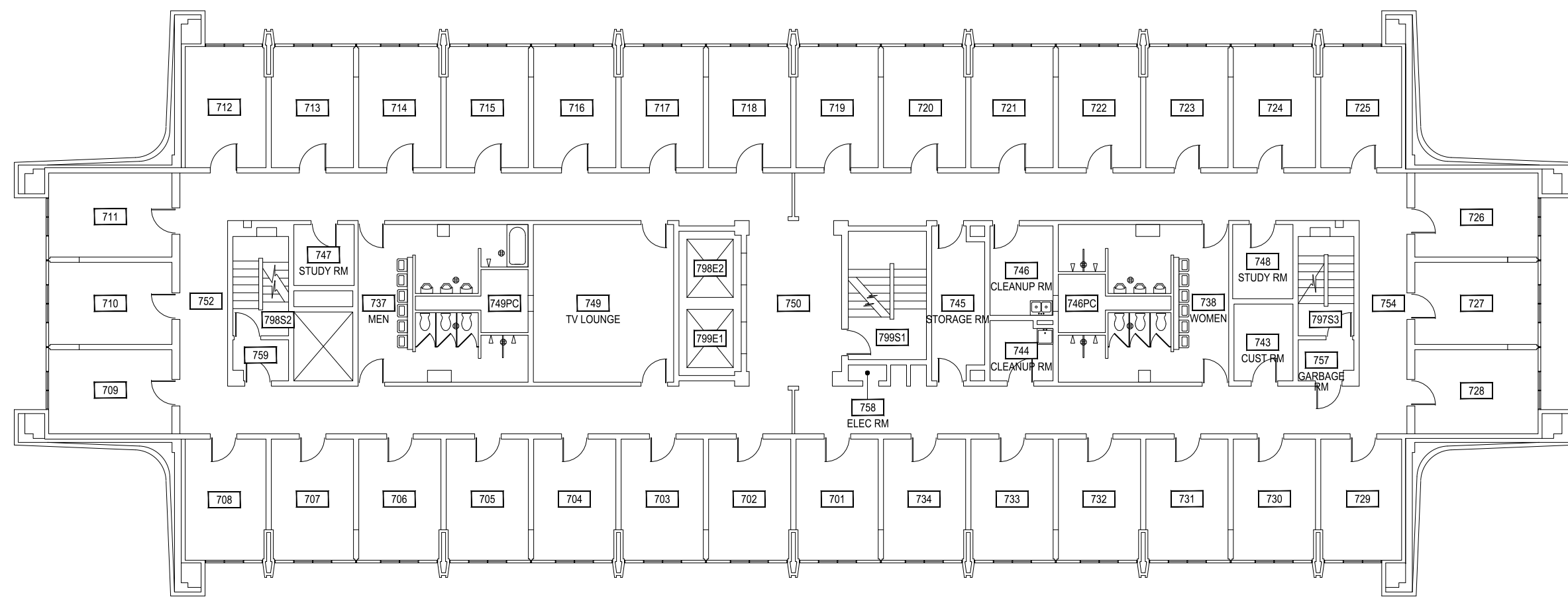
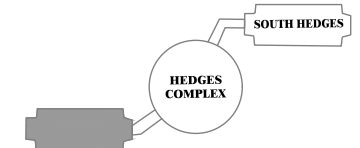
Dec 20, 2016 - 11:39am - 343\_A5.dwg  
 H:\Hedges Dorms\North Hedges\Building Plan - Book Copy\




**1** NORTH HEDGES HALL - SIXTH LEVEL  
 SCALE: 1/16" = 1'

<b>MONTANA STATE UNIVERSITY</b> CAMPUS PLANNING, DESIGN & CONSTRUCTION BOZEMAN, MONTANA PHONE: 406.994.5413 FAX: 406.994.5665	INDEX #
	<b>36</b>
	BUILDING #
	<b>343</b>

Dec 20, 2016 - 11:39am - 343\_A6.dwg  
 H:\Hedges Dorms\North Hedges\Building Plan - Book Copy\

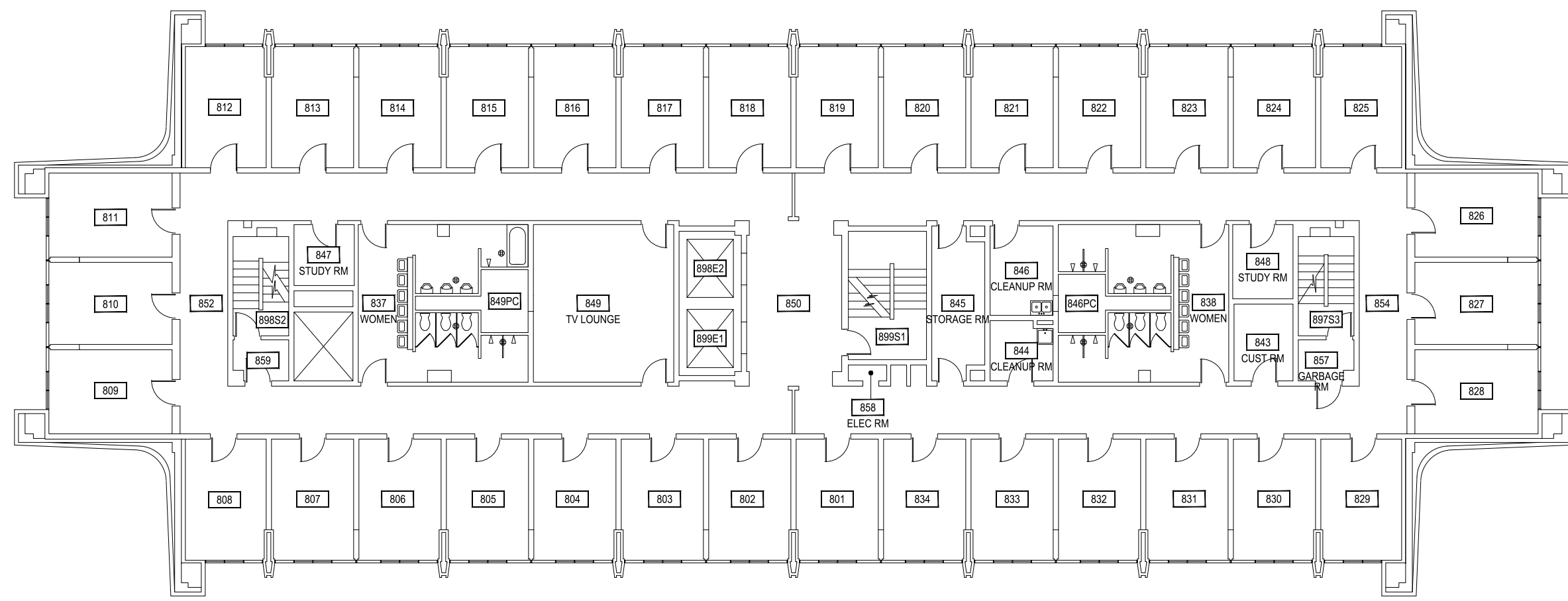
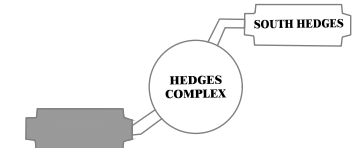



**1** NORTH HEDGES HALL - SEVENTH LEVEL   
 SCALE: 1/16" = 1'

**M** MONTANA STATE UNIVERSITY  
 CAMPUS PLANNING,  
 DESIGN & CONSTRUCTION  
 BOZEMAN, MONTANA  
 PHONE: 406.994.5413 FAX: 406.994.5665

INDEX # **36**  
 BUILDING # **343**

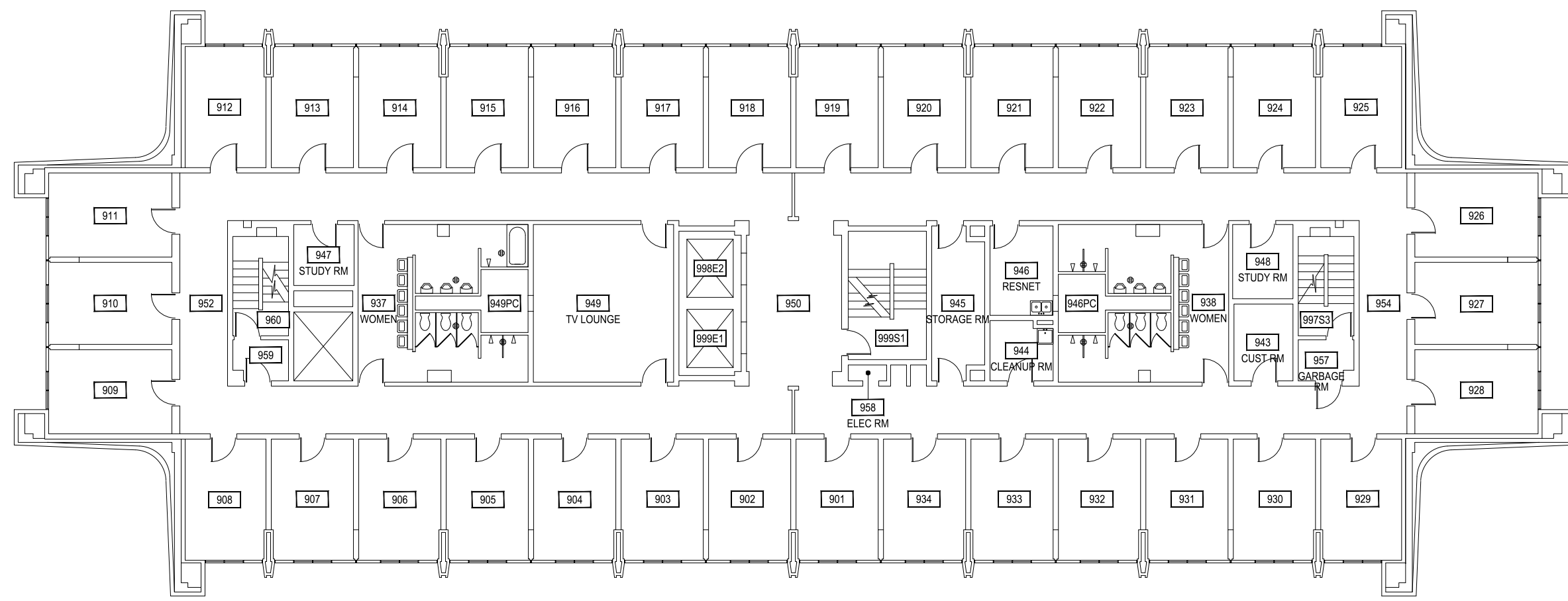
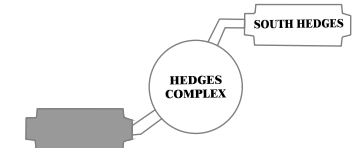





**1** NORTH HEDGES HALL - EIGHTH LEVEL   
 SCALE: 1/16" = 1'

**M** MONTANA STATE UNIVERSITY  
 CAMPUS PLANNING,  
 DESIGN & CONSTRUCTION  
 BOZEMAN, MONTANA  
 PHONE: 406.994.5413 FAX: 406.994.5665

INDEX # **36**  
 BUILDING # **343**



**1** NORTH HEDGES HALL - NINTH LEVEL  
 SCALE: 1/16" = 1'



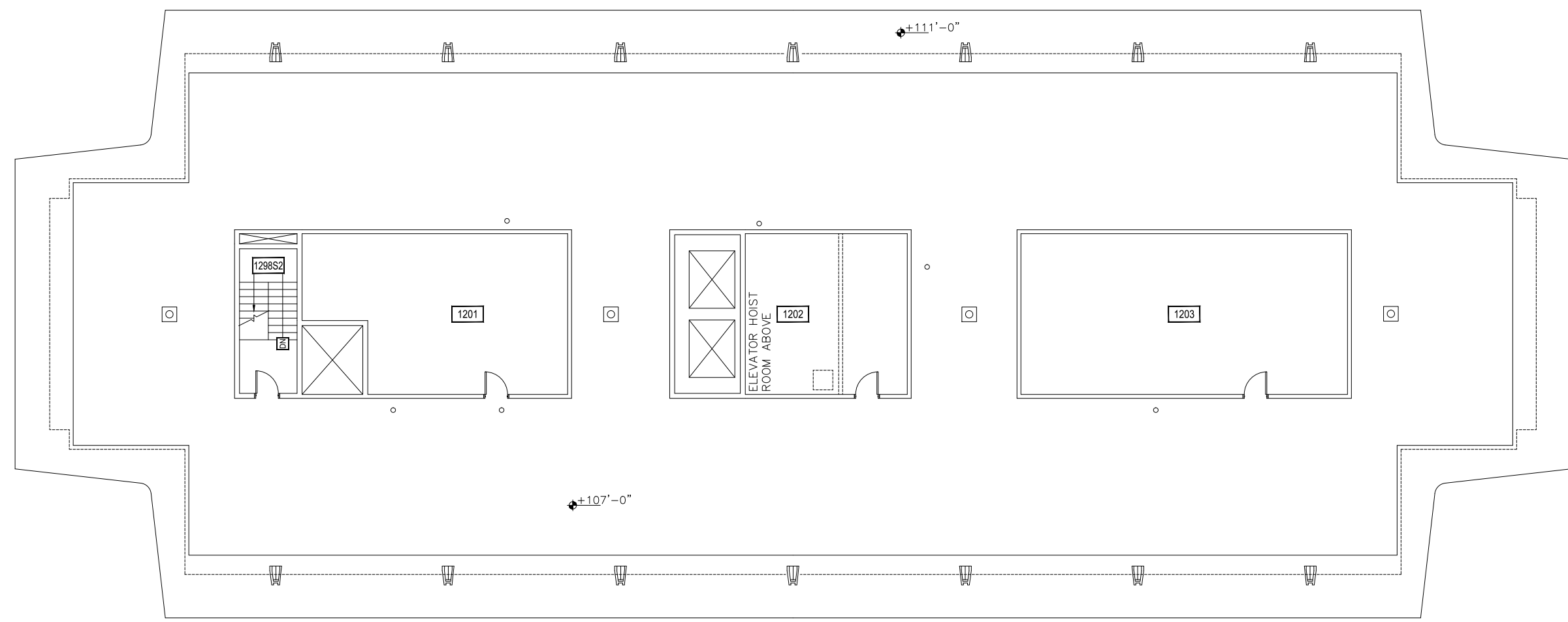
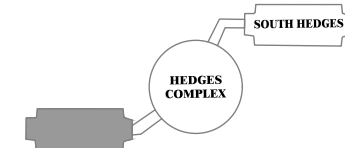
Dec 20, 2016 - 11:39am - 343\_A9.dwg  
 H:\Hedges Dorms\North Hedges\Building Plan - Book Copy\

**M** MONTANA STATE UNIVERSITY  
 CAMPUS PLANNING,  
 DESIGN & CONSTRUCTION  
 BOZEMAN, MONTANA  
 PHONE: 406.994.5413 FAX: 406.994.5665

INDEX #	<b>36</b>
BUILDING #	<b>343</b>







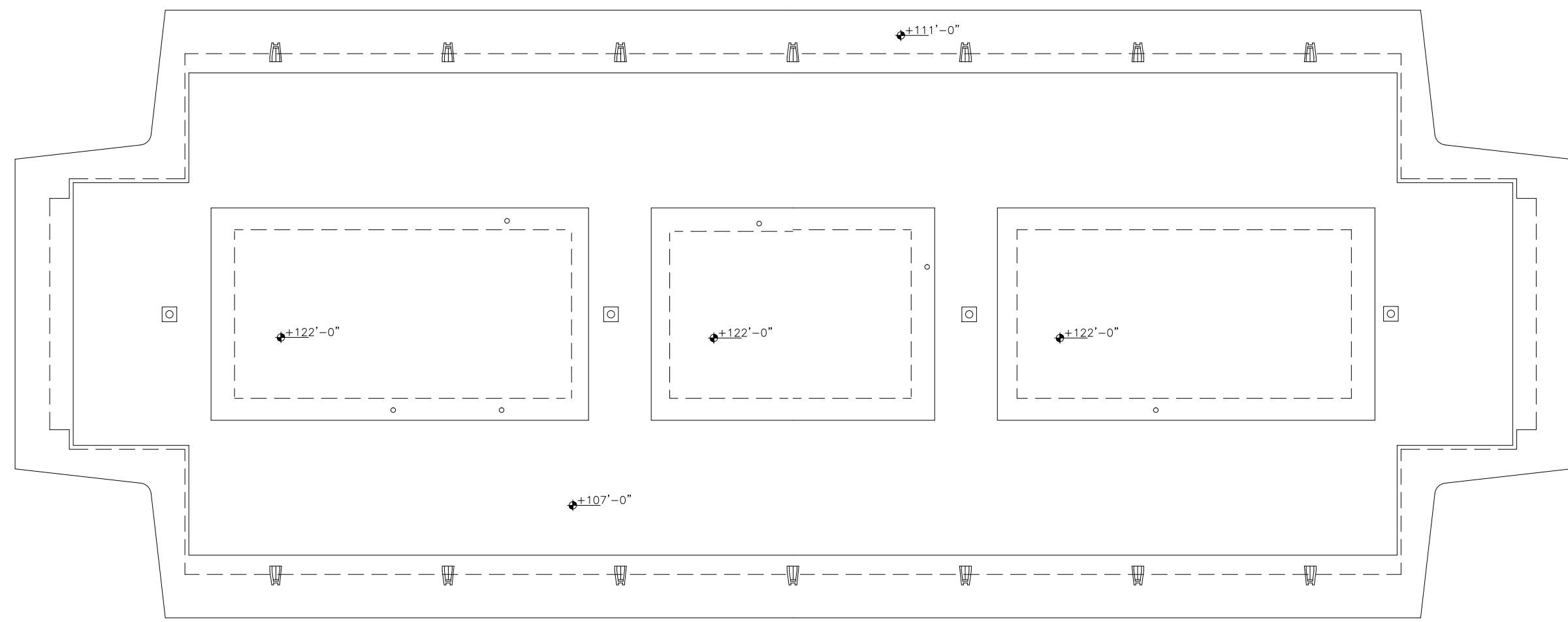
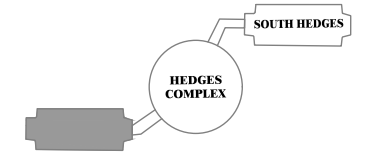
Dec 20, 2016 - 11:39am - 343\_AP.dwg  
 H:\Hedges Dorns\North Hedges\Building Plan - Book Copy\

**1** NORTH HEDGES HALL - PENTHOUSE LEVEL 

SCALE: 1/16" = 1'

**M** MONTANA STATE UNIVERSITY  
 CAMPUS PLANNING,  
 DESIGN & CONSTRUCTION  
 BOZEMAN, MONTANA  
 PHONE: 406.994.5413 FAX: 406.994.5665

INDEX #	<b>36</b>
BUILDING #	<b>343</b>



Dec 20, 2016 - 11:39am - 343\_AR.dwg  
 H:\Hedges Dorns\North Hedges\Building Plan - Book Copy\

**1** NORTH HEDGES HALL - ROOF LEVEL **z**  
 SCALE: 1/16" = 1'

**M** MONTANA STATE UNIVERSITY  
 CAMPUS PLANNING,  
 DESIGN & CONSTRUCTION  
 BOZEMAN, MONTANA  
 PHONE: 406.994.5413 FAX: 406.994.5665

INDEX #	<b>36</b>
BUILDING #	<b>343</b>