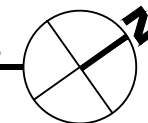




1 LANGFORD HALL - BASEMENT LEVEL
 SCALE: 1" = 25'

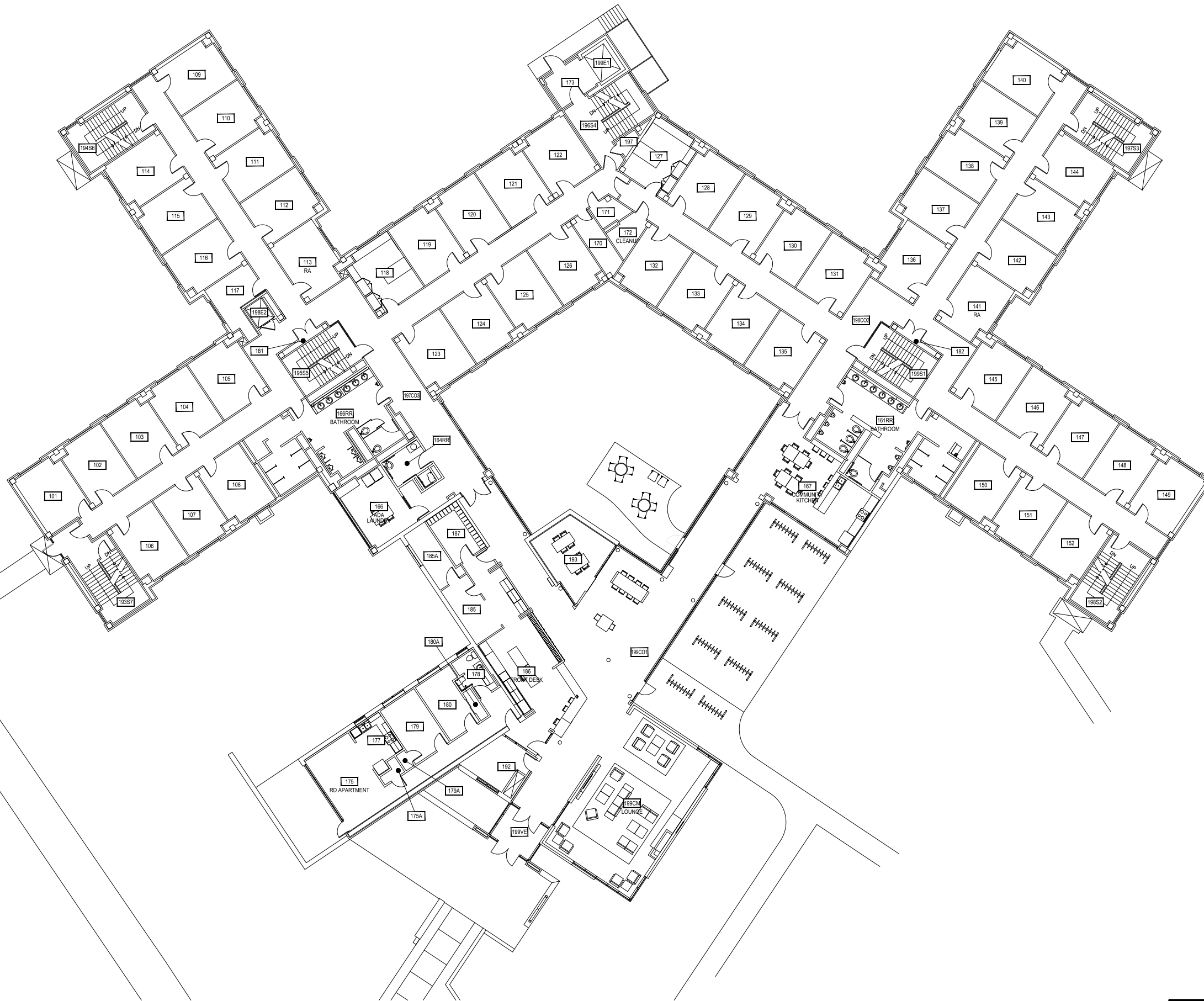


Mar 24, 2015 - 9:07am - 338 AR.dwg
 E:\Langford Hall\Building Plan - Book Copy\

M MONTANA STATE UNIVERSITY
 CAMPUS PLANNING,
 DESIGN & CONSTRUCTION
 BOZEMAN, MONTANA
 PHONE: 406.994.5413 FAX: 406.994.5665

INDEX #	38
BUILDING #	338

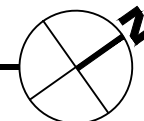
Mar 24, 2015 - 9:07am - 338 A1.dwg
E:\Langford Hall\Building Plan - Book Copy\



1

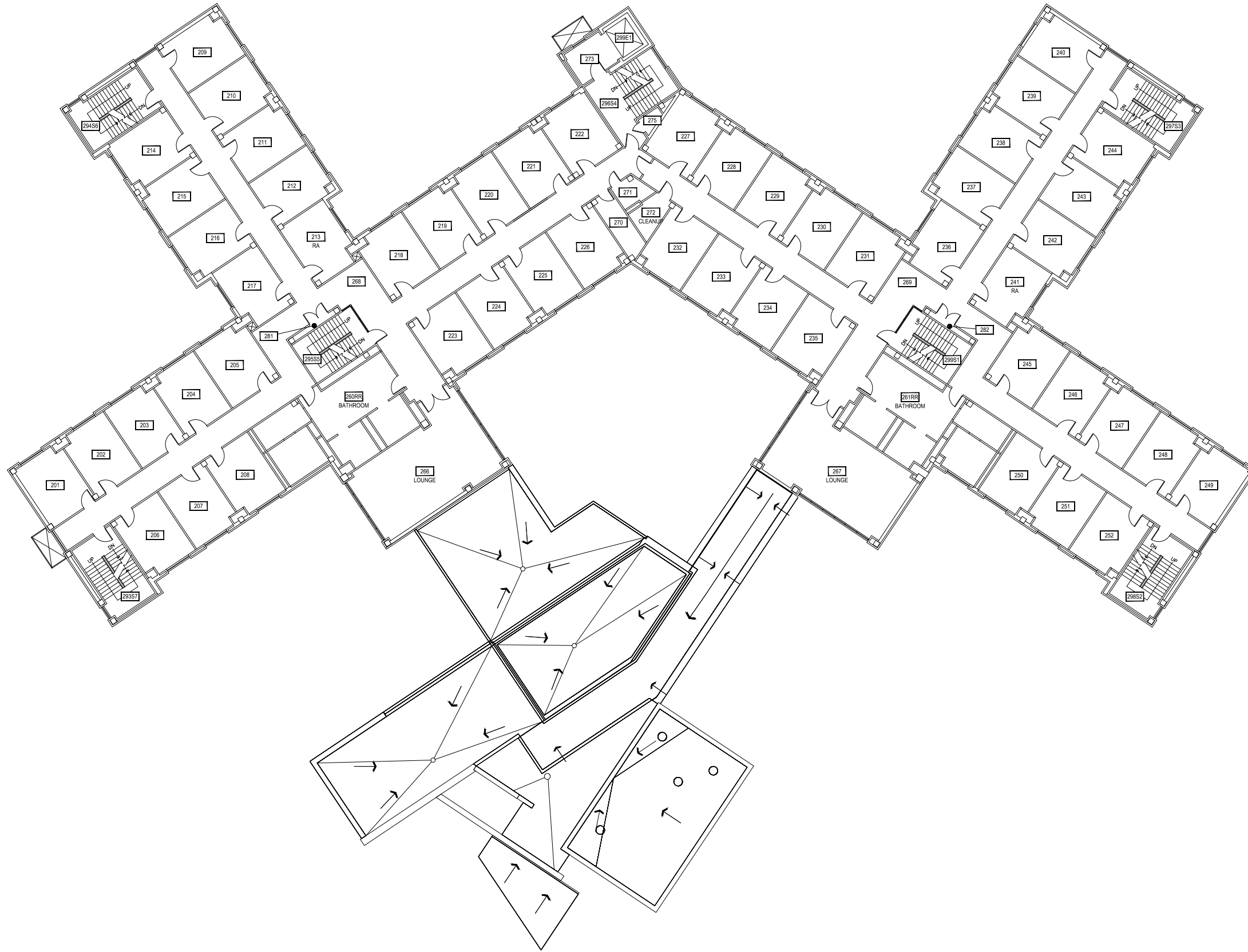
LANGFORD HALL - FIRST LEVEL

SCALE: 1" = 25'



M MONTANA
STATE UNIVERSITY
CAMPUS PLANNING,
DESIGN & CONSTRUCTION
BOZEMAN, MONTANA
PHONE: 406.994.5413 FAX: 406.994.5665

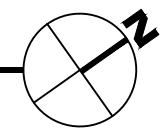
INDEX #
38
BUILDING #
338



1

LANGFORD HALL - SECOND LEVEL

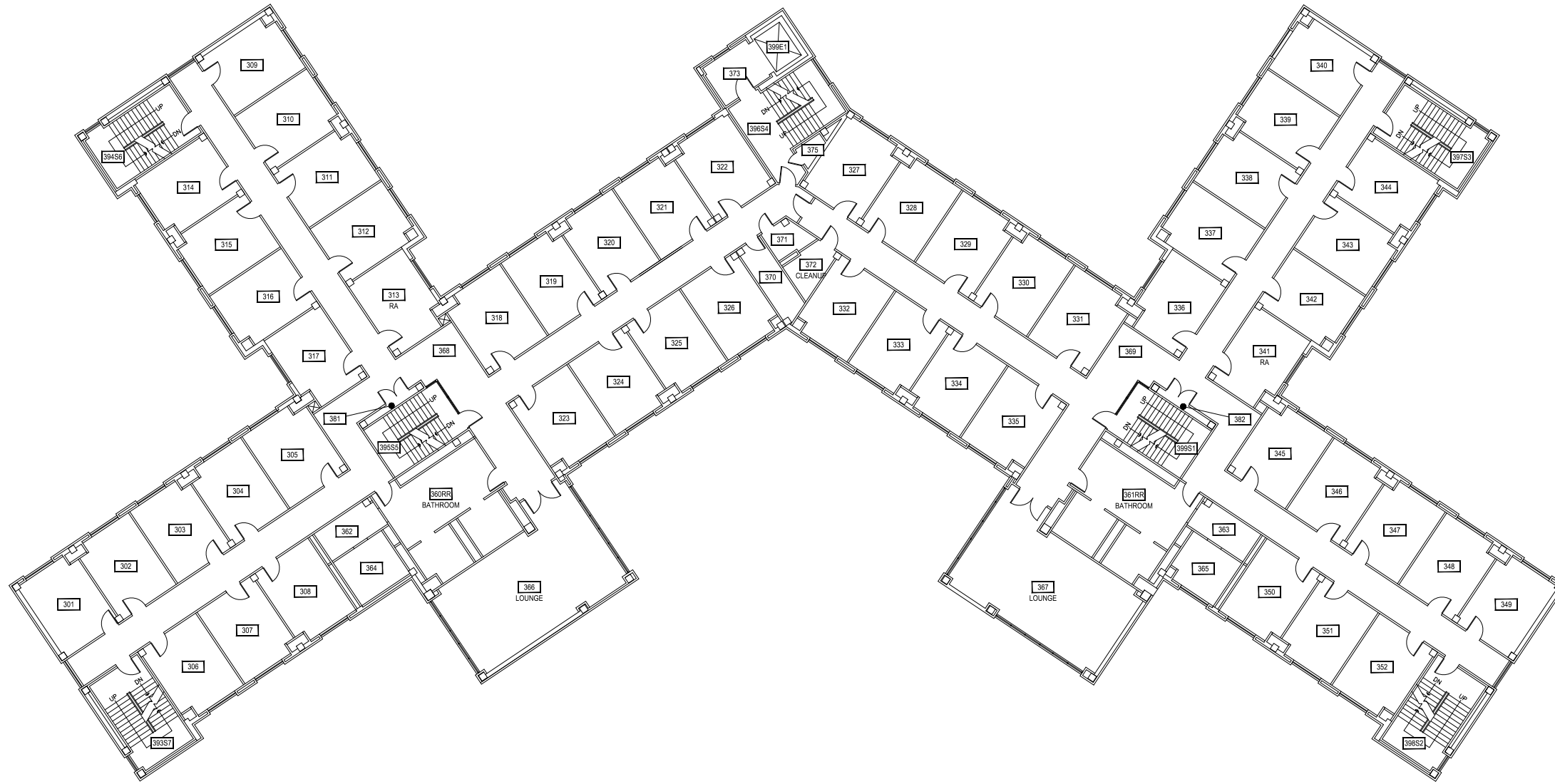
SCALE: 1" = 25'



May 24, 2015 - 9:07am - 338_A2.dwg
E:\Langford Hall\Building Plan - Book Copy\

M MONTANA STATE UNIVERSITY
 CAMPUS PLANNING,
 DESIGN & CONSTRUCTION
 BOZEMAN, MONTANA
 PHONE: 406.994.5413 FAX: 406.994.5665

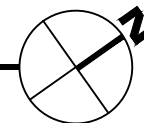
INDEX #	38
BUILDING #	338

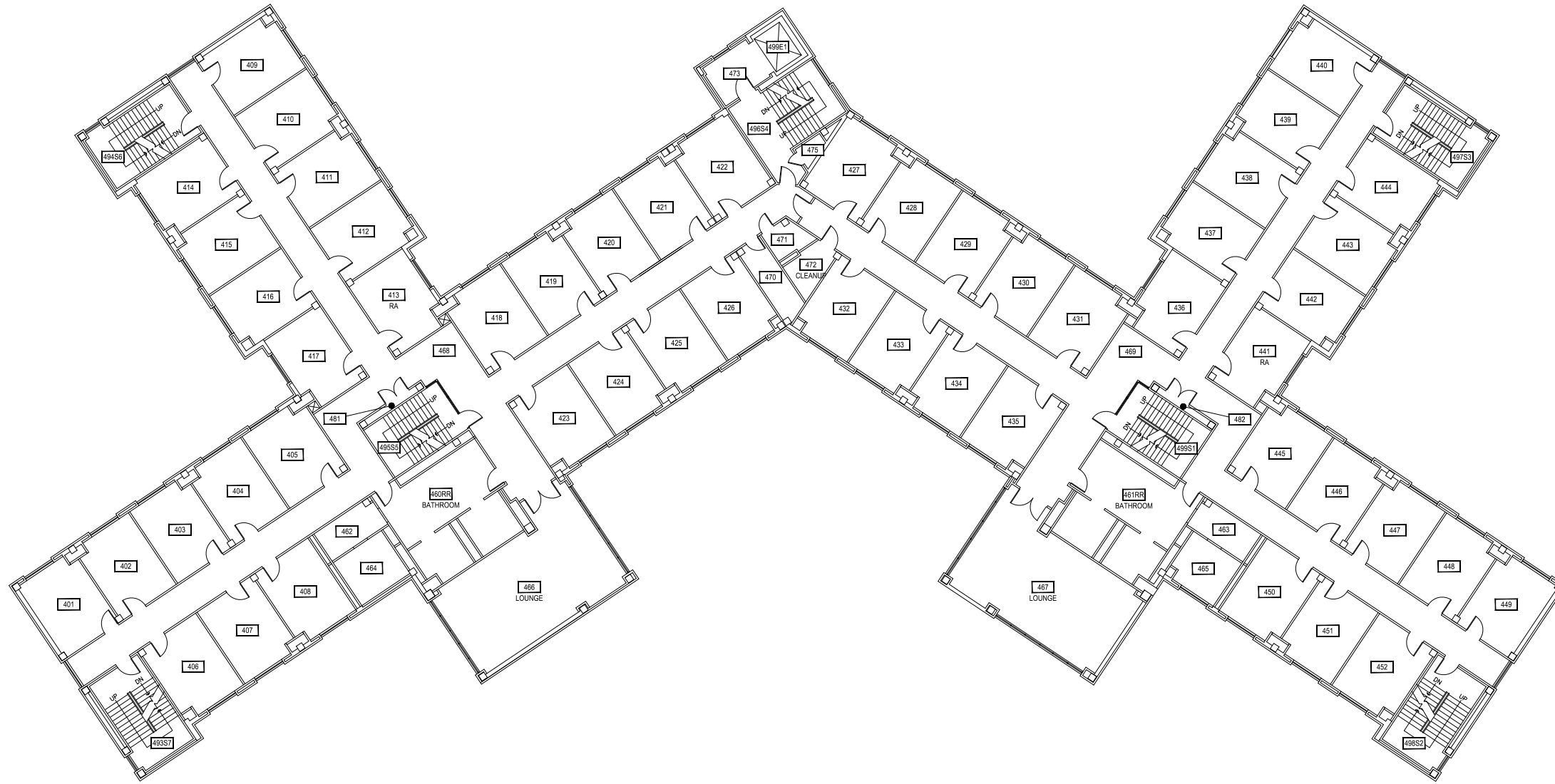


1

LANGFORD HALL - THIRD LEVEL

SCALE: 1" = 25'

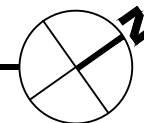


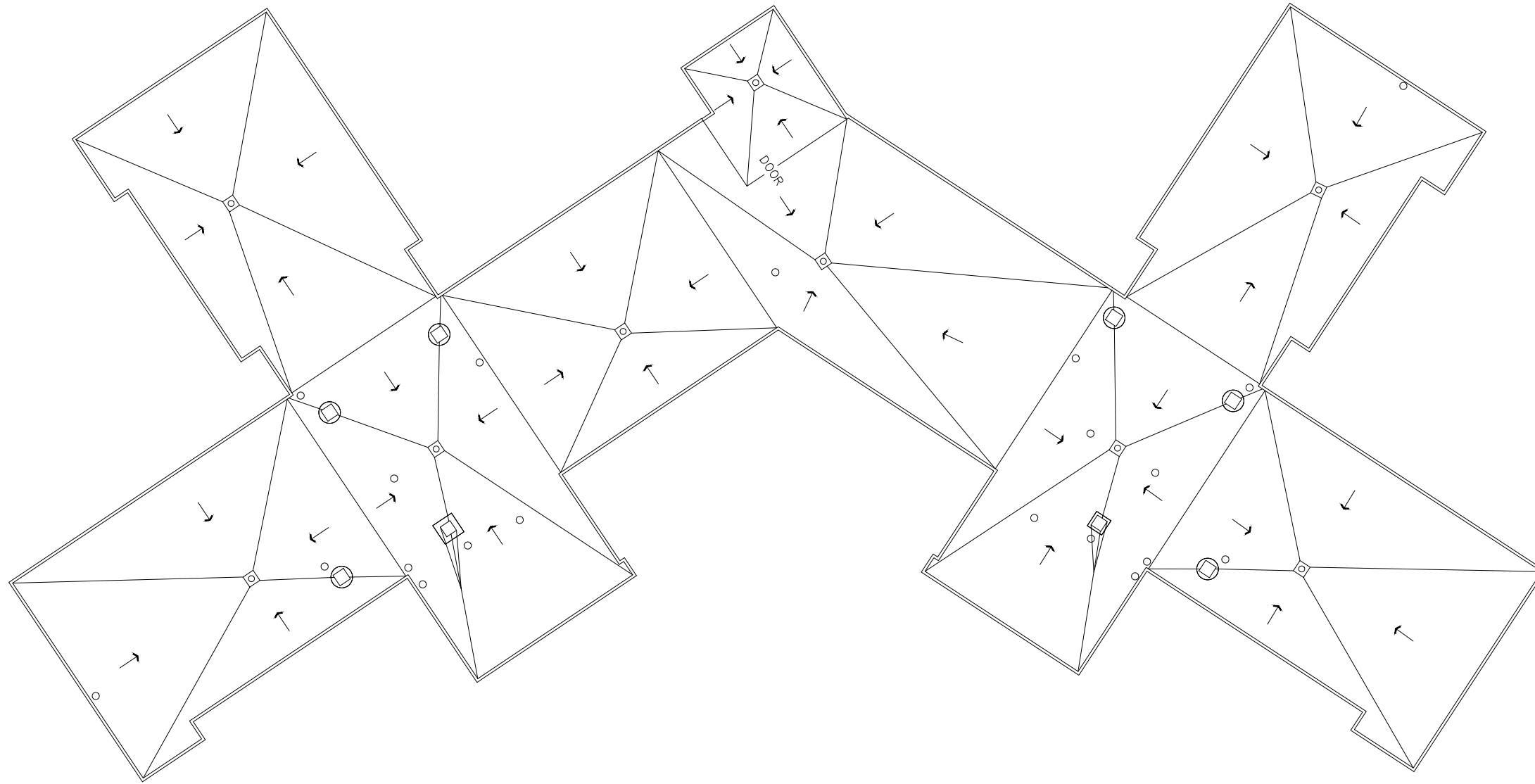


1

LANGFORD HALL - FOURTH LEVEL

SCALE: 1" = 25'

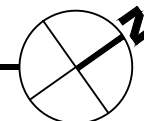




1

LANGFORD HALL - ROOF LEVEL

SCALE: 1" = 25'



Mar 24, 2015 - 9:07am - 338_AK.dwg
E:\Langford Hall\Building Plan - Book Copy\

M MONTANA
STATE UNIVERSITY
CAMPUS PLANNING,
DESIGN & CONSTRUCTION
BOZEMAN, MONTANA
PHONE: 406.994.5413 FAX: 406.994.5665

INDEX #	38
BUILDING #	338