



1 HANNON HALL - BASEMENT LEVEL  
 SCALE: 1' = 25'

Dec 15, 2016 - 3:47 pm - 331\_AB.dwg  
 H:\Hannon Hall\Building Plan - Book Copy\



1 HANNON HALL - FIRST LEVEL  
 SCALE: 1' = 25'



Dec 15, 2016 - 3:47pm - 331\_A1.dwg  
 H:\Hannon Hall\Building Plan - Book Copy\

**M** MONTANA STATE UNIVERSITY  
 CAMPUS PLANNING,  
 DESIGN & CONSTRUCTION  
 BOZEMAN, MONTANA  
 PHONE: 406.994.5413 FAX: 406.994.5665

INDEX #  
**25**  
 BUILDING #  
**331**



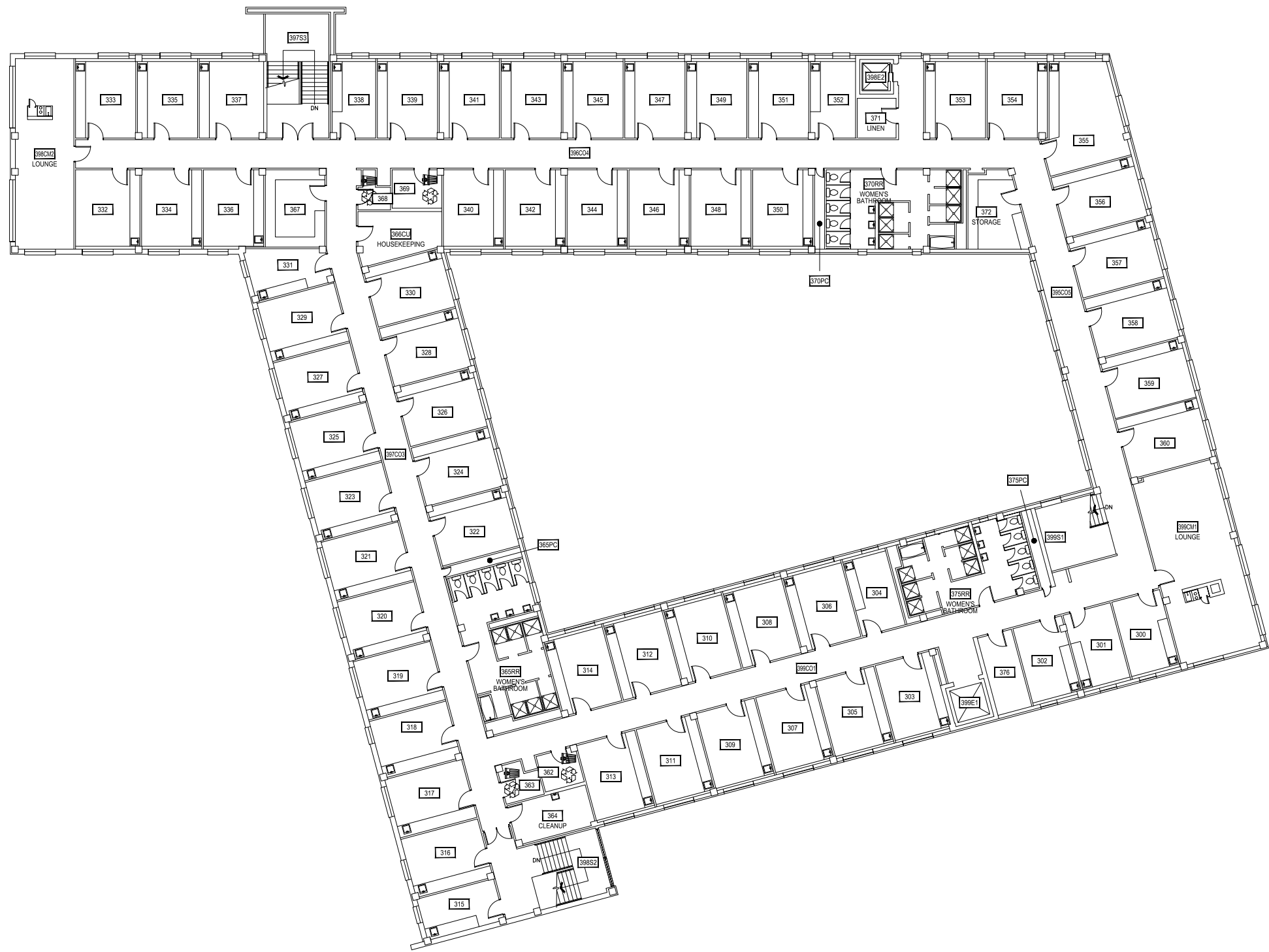
1 HANNON HALL - SECOND LEVEL  
 SCALE: 1' = 25'



Dec 15, 2016 - 3:47pm - 331\_A2.dwg  
 H:\Hannon Hall\Building Plan - Book Copy\


**MONTANA STATE UNIVERSITY**  
 CAMPUS PLANNING,  
 DESIGN & CONSTRUCTION  
 BOZEMAN, MONTANA  
 PHONE: 406.994.5413 FAX: 406.994.5665

INDEX #	<b>25</b>
BUILDING #	<b>331</b>

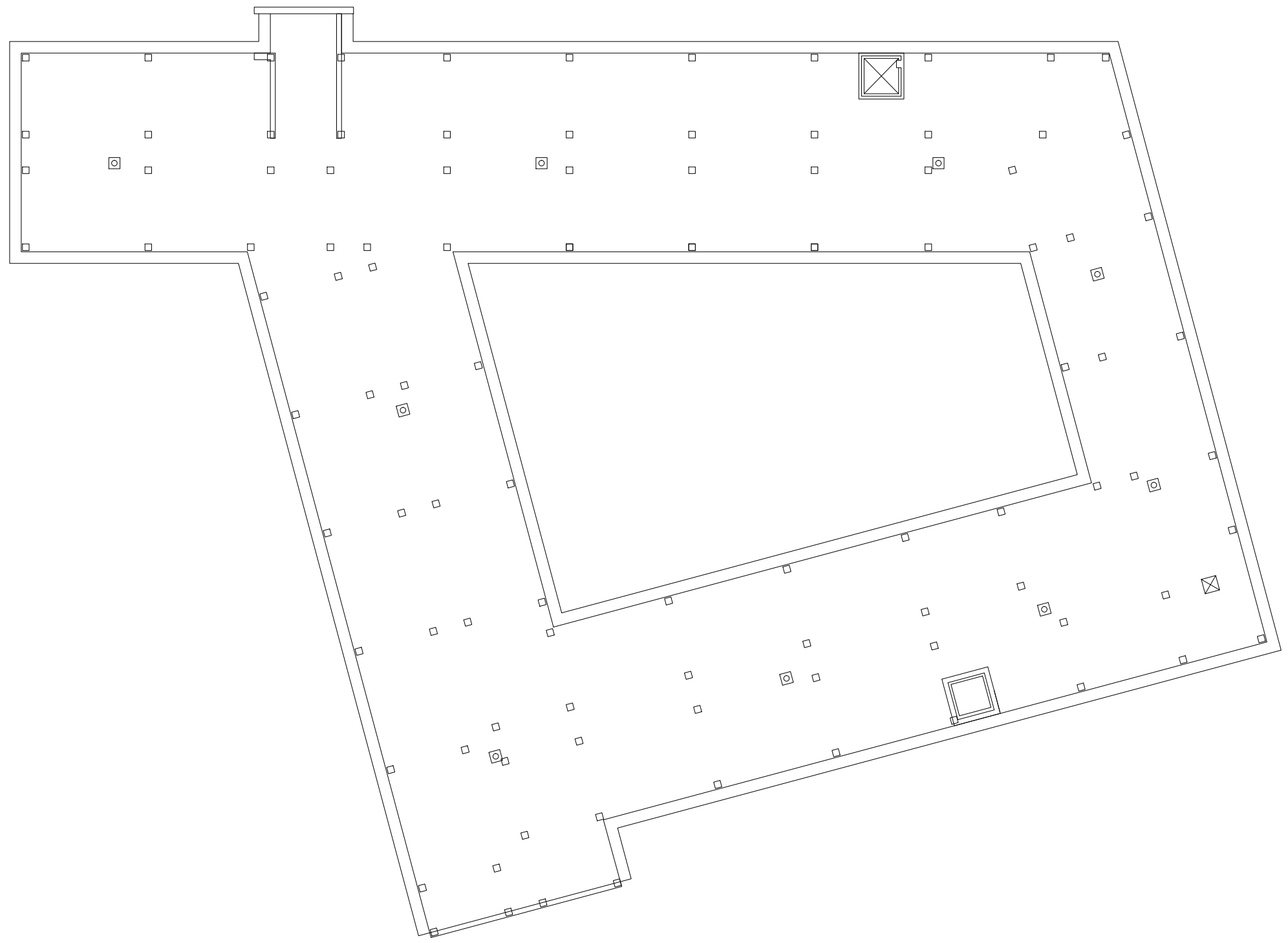


1 HANNON HALL - THIRD LEVEL  
 SCALE: 1' = 25'

**M** MONTANA STATE UNIVERSITY  
 CAMPUS PLANNING,  
 DESIGN & CONSTRUCTION  
 BOZEMAN, MONTANA  
 PHONE: 406.994.5413 FAX: 406.994.5665

INDEX #	25
BUILDING #	331

Dec 15, 2016 - 3:47pm - 331\_A3.dwg  
 H:\Hannon Hall\Building Plan - Book Copy\



1
**HANNON HALL - ROOF LEVEL**  
 SCALE: 1' = 25'

Dec 15, 2016 - 3:47pm - 331\_Alt.dwg  
 H:\Hannon Hall\Building Plan - Book Copy\

**MONTANA**  
 STATE UNIVERSITY  
 CAMPUS PLANNING,  
 DESIGN & CONSTRUCTION  
 BOZEMAN, MONTANA  
 PHONE: 406.994.5413 FAX: 406.994.5665

INDEX #	<b>25</b>
BUILDING #	<b>331</b>