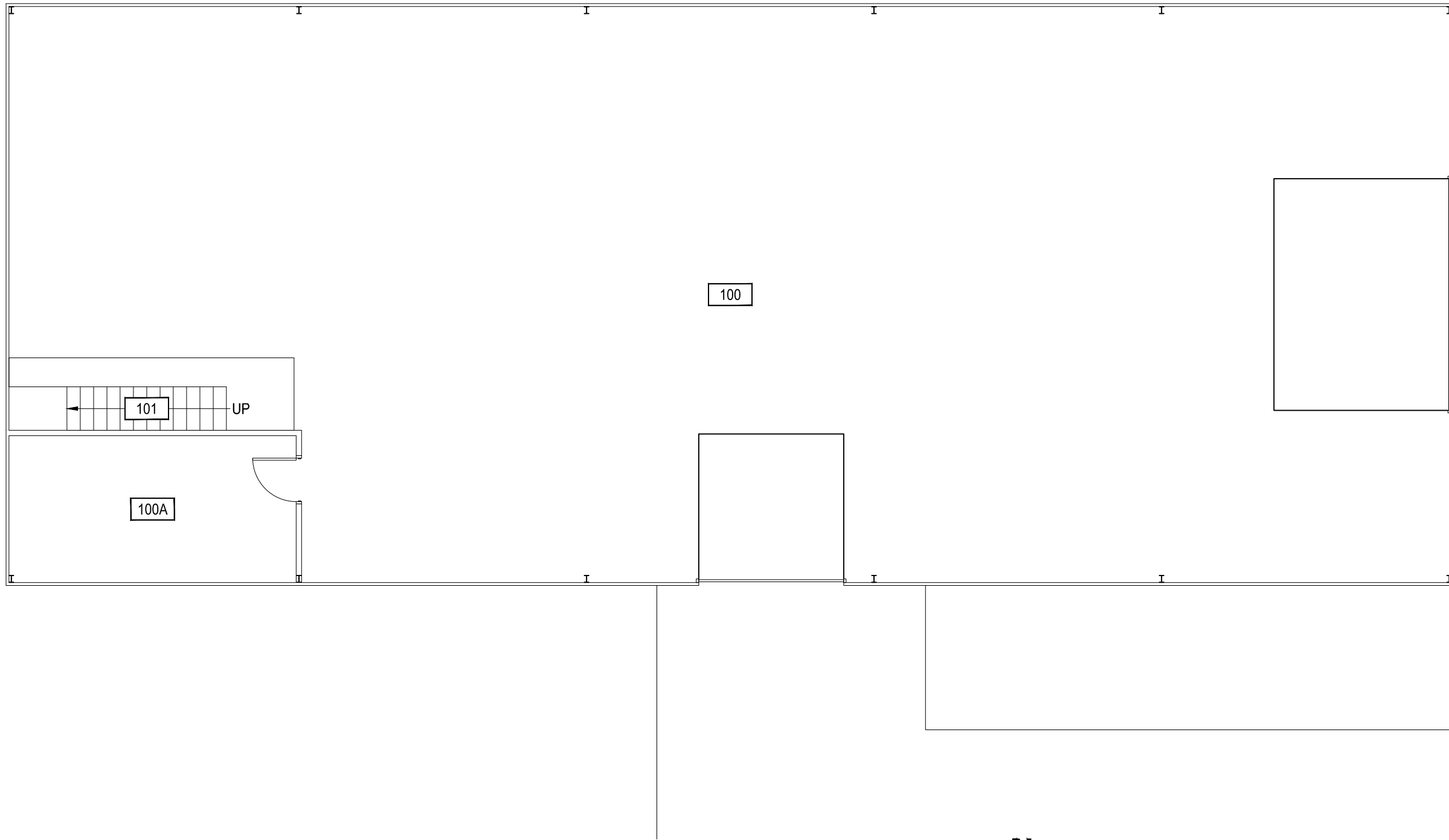


Oct 04, 2012 - 4:23pm - 319_A1.dwg
H:\New Yard\Building Plan Book\



1

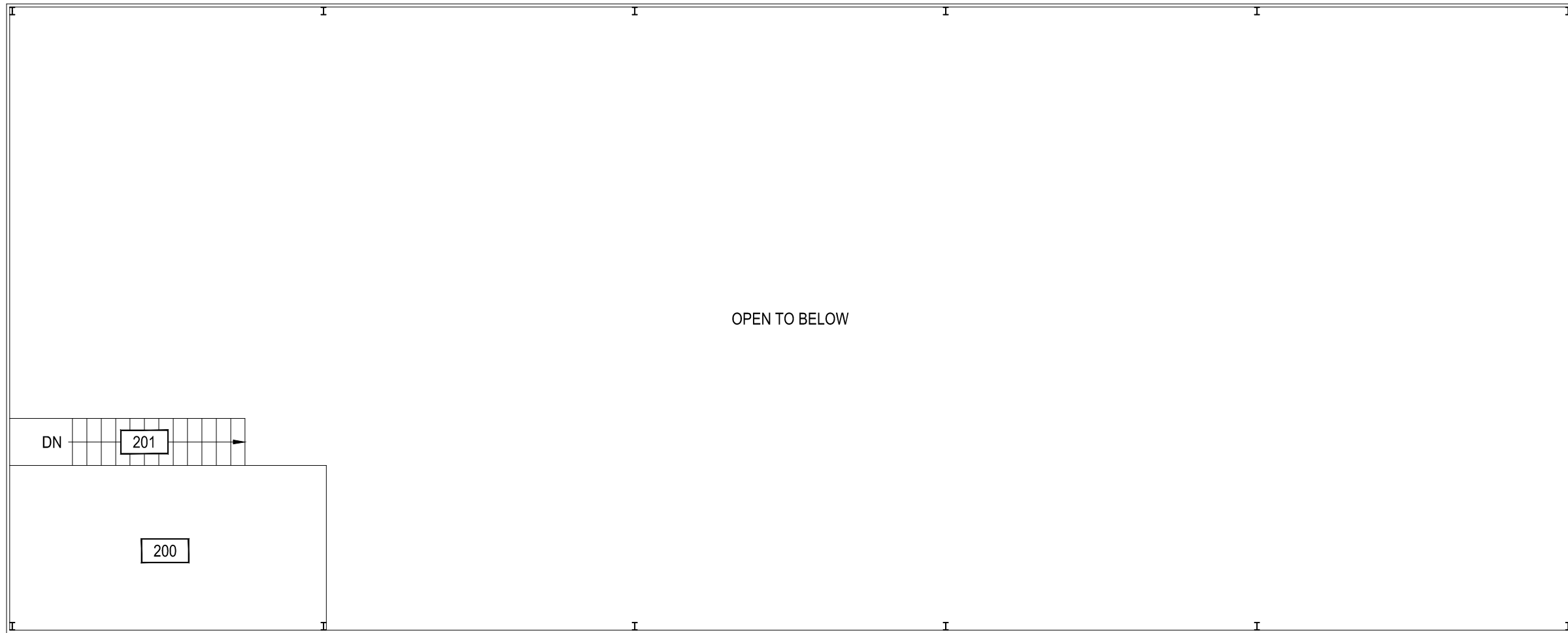
FS BUTLER BUILDING - FIRST LEVEL

SCALE: 1/8" = 1'



M MONTANA
STATE UNIVERSITY
FACILITIES PLANNING,
DESIGN & CONSTRUCTION
BOZEMAN, MONTANA
PHONE: 406.994.4131 FAX: 406.994.6572

INDEX #
100
BUILDING #
319



1

FS BUTLER BUILDING - SECOND LEVEL
SCALE: 1/8" = 1'



M MONTANA
STATE UNIVERSITY
FACILITIES PLANNING,
DESIGN & CONSTRUCTION
BOZEMAN, MONTANA
PHONE: 406.994.4131 FAX: 406.994.6572

INDEX #
100
BUILDING #
319