

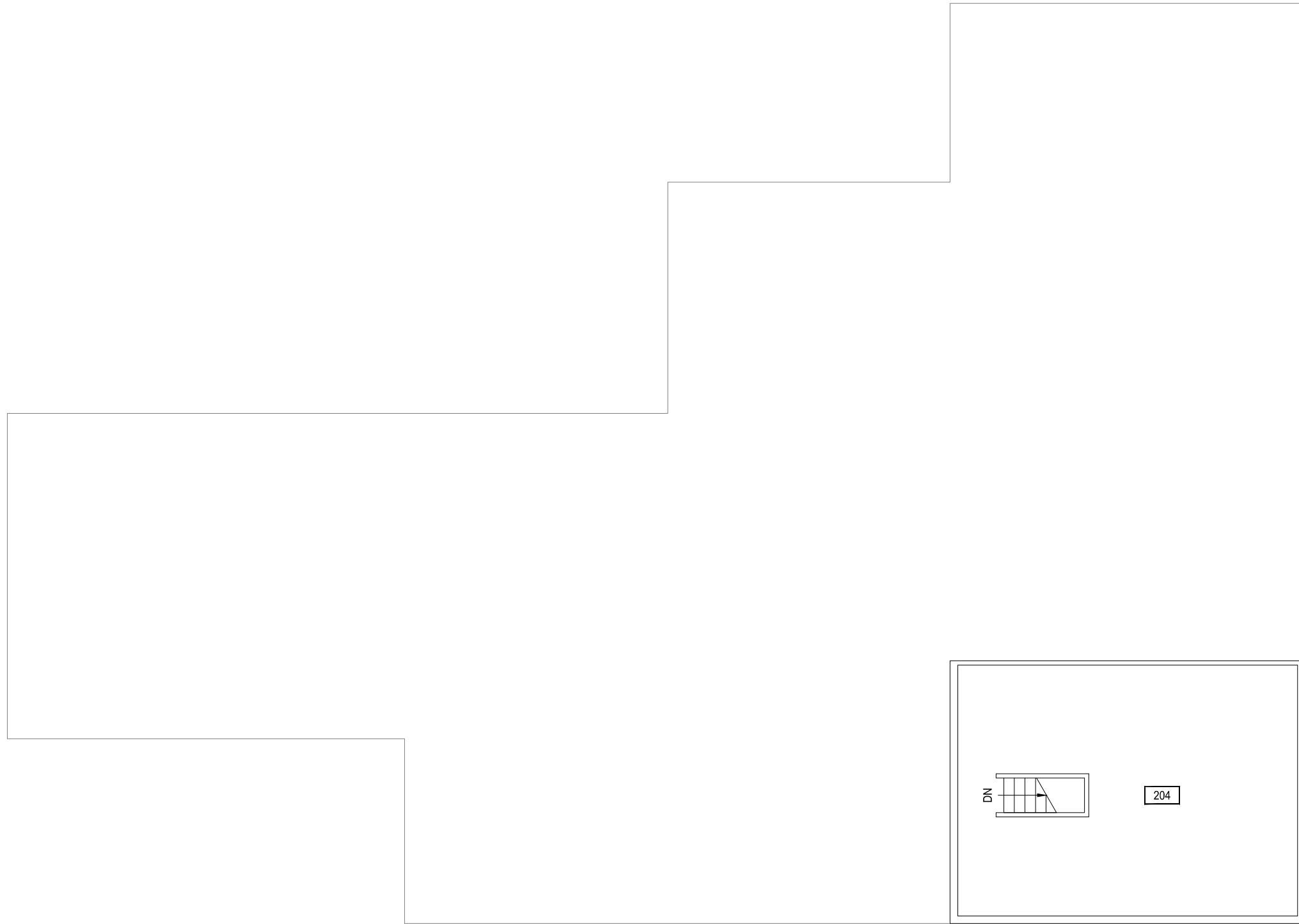
1
**FS MOTOR POOL GARAGE - FIRST LEVEL**

  
 SCALE: 3/32" = 1'

**MONTANA**  
 STATE UNIVERSITY  
 FACILITIES PLANNING,  
 DESIGN & CONSTRUCTION  
 BOZEMAN, MONTANA  
 PHONE: 406.994.4131 FAX: 406.994.6572

|            |            |
|------------|------------|
| INDEX #    | <b>100</b> |
| BUILDING # | <b>314</b> |

Oct 05, 2012 - 12:52pm - 314\_A2.dwg  
H:\New Yarc\Building Plan Book\



1

FS MOTOR POOL GARAGE - SECOND LEVEL

SCALE: 3/32" = 1'



**M** MONTANA  
STATE UNIVERSITY  
FACILITIES PLANNING,  
DESIGN & CONSTRUCTION  
BOZEMAN, MONTANA  
PHONE: 406.994.4131 FAX: 406.994.6572

|            |            |
|------------|------------|
| INDEX #    | <b>100</b> |
| BUILDING # | <b>314</b> |