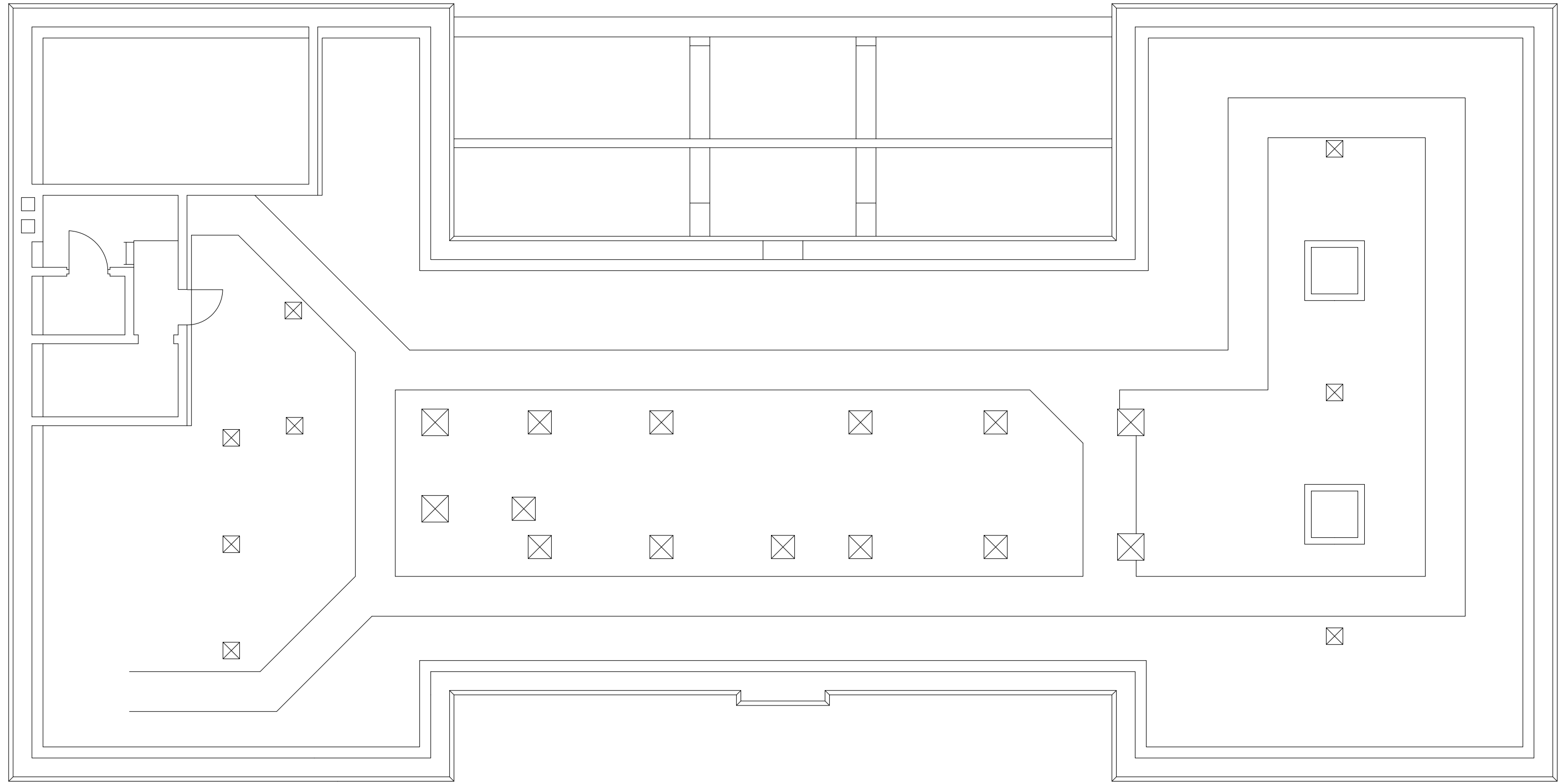


Mar 19, 2015 - 2:02pm - 301_AB.dwg
H:\Hamilton Hall\Building Plan - Book Copy



1

HAMILTON HALL - BASEMENT LEVEL

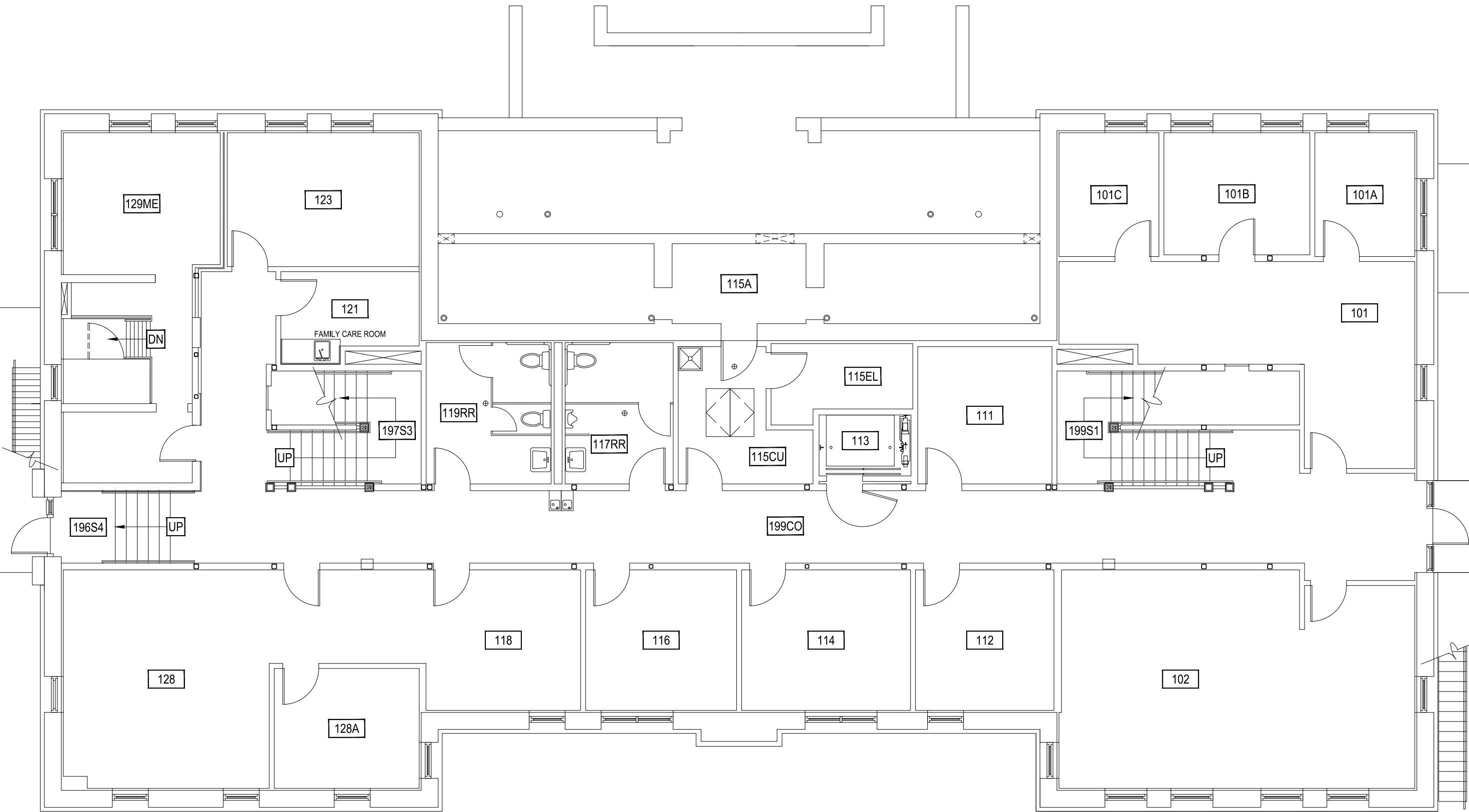
SCALE: 1/8" = 1'



M MONTANA
STATE UNIVERSITY
CAMPUS PLANNING,
DESIGN & CONSTRUCTION
BOZEMAN, MONTANA
PHONE: 406.994.5413 FAX: 406.994.5665

INDEX #
19
BUILDING #
301

Mar 19, 2015 - 2:02pm - 301_L1.dwg
H:\Hamilton Hall\Building Plan - Book Copy



1

HAMILTON HALL - FIRST LEVEL

SCALE: 1/8" = 1'



M MONTANA
STATE UNIVERSITY
CAMPUS PLANNING,
DESIGN & CONSTRUCTION
BOZEMAN, MONTANA
PHONE: 406.994.5413 FAX: 406.994.5665

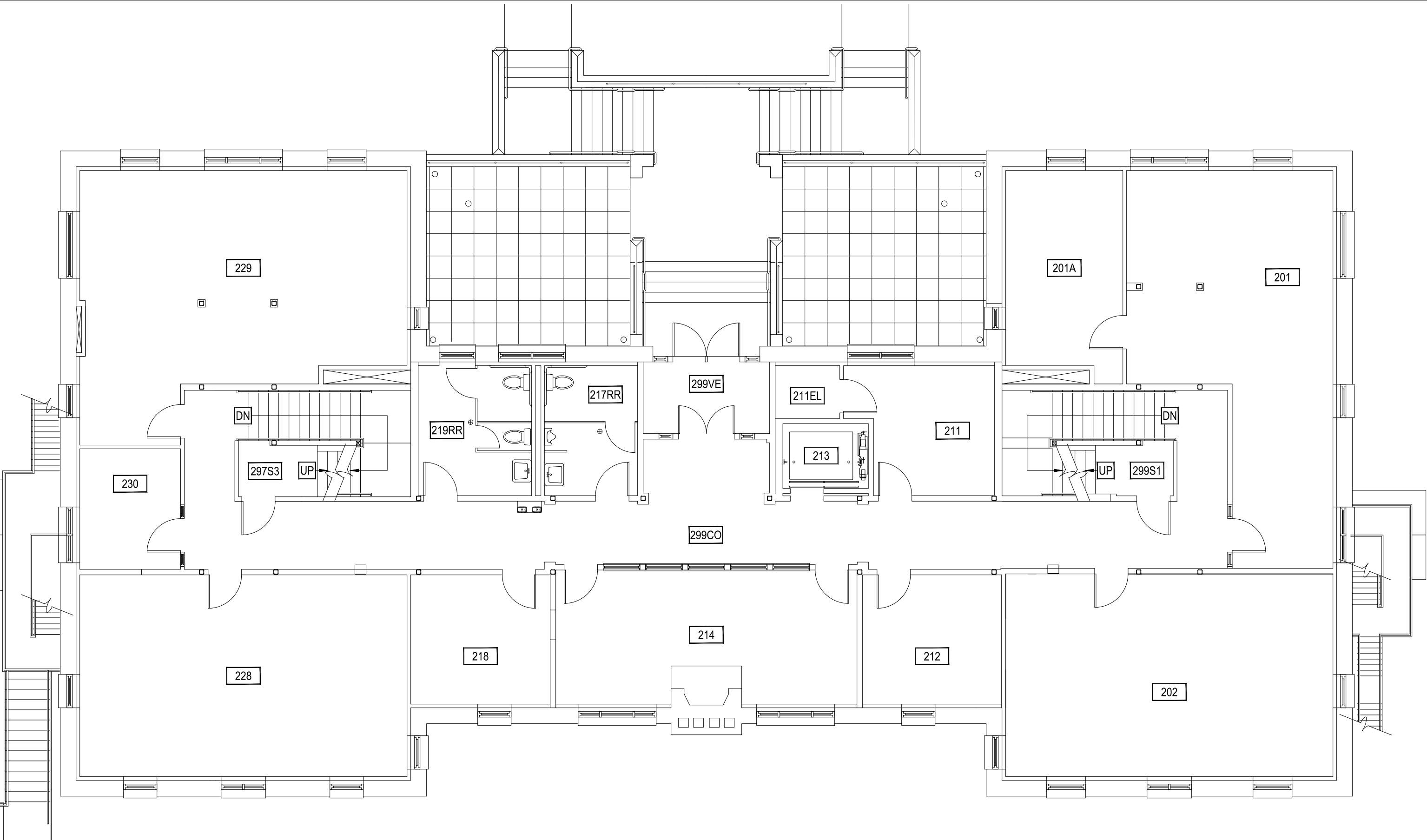
INDEX #

19

BUILDING #

301

Mar 19, 2015 - 2:02pm - 301_A2.dwg
H:\Hamilton Hall\Building Plan - Book Copy



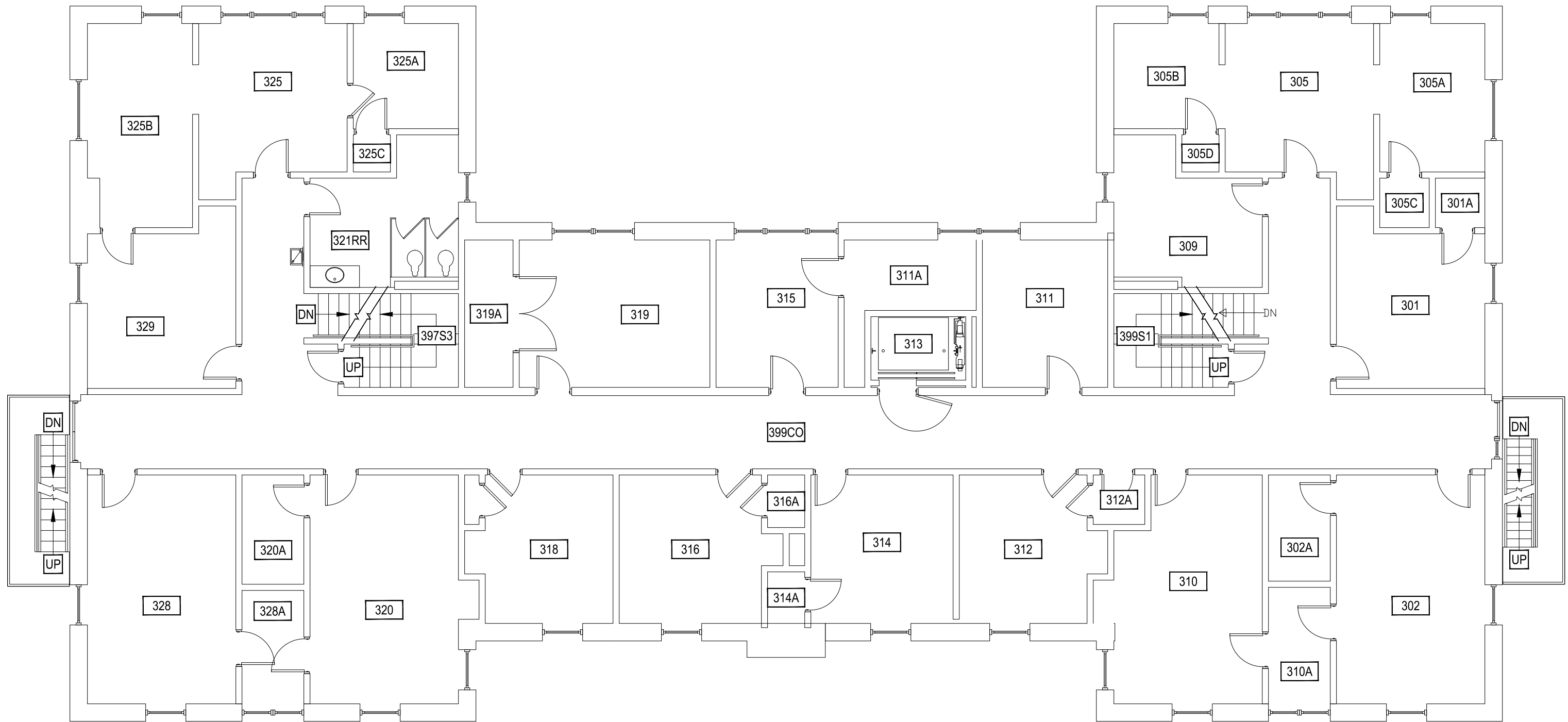
1 HAMILTON HALL - SECOND LEVEL
SCALE: 1/8" = 1'



M MONTANA STATE UNIVERSITY
CAMPUS PLANNING,
DESIGN & CONSTRUCTION
BOZEMAN, MONTANA
PHONE: 406.994.5413 FAX: 406.994.5665

INDEX #
19
BUILDING #
301

Mar 19, 2015 - 2:02pm - 301_A3.dwg
H:\Hamilton Hall\Building Plan - Book Copy

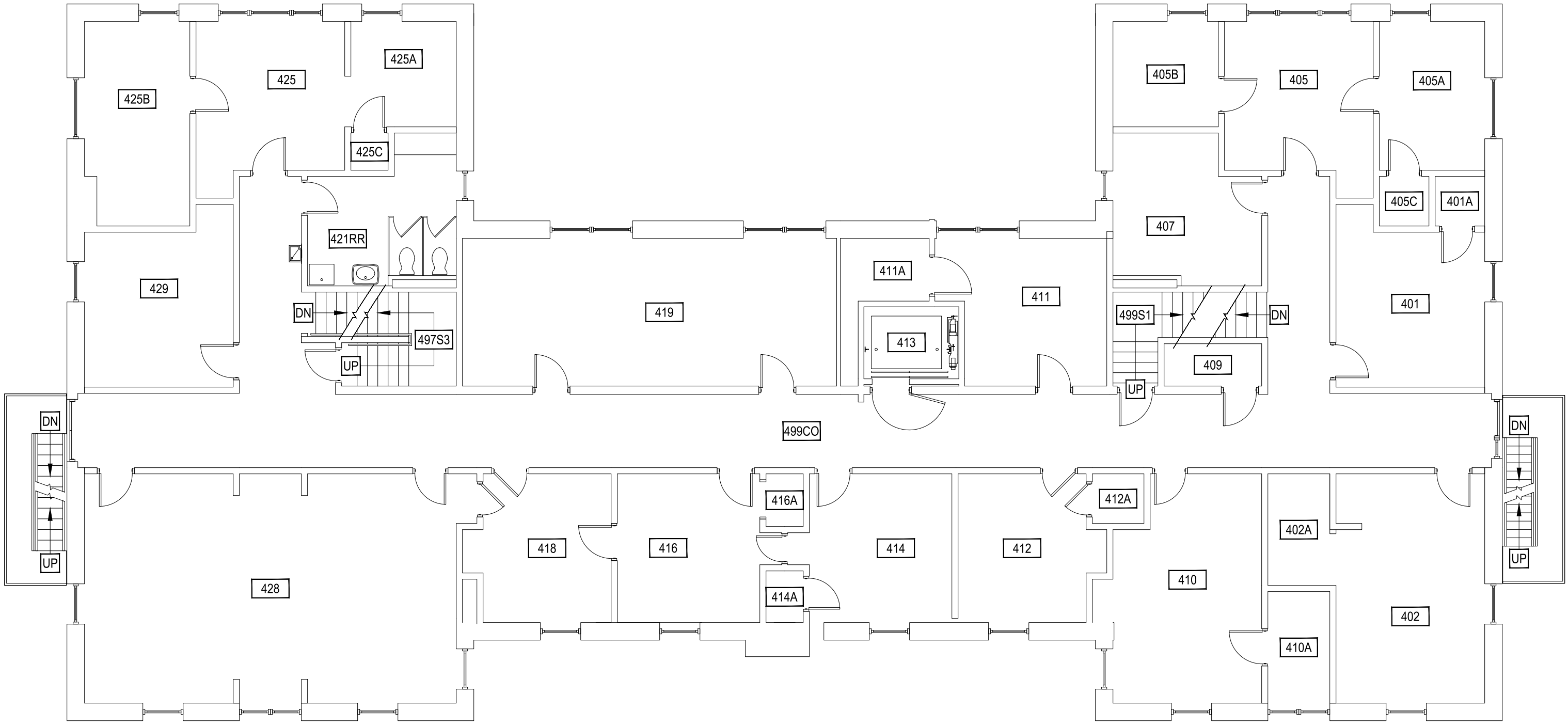


1 HAMILTON HALL - THIRD LEVEL
SCALE: 1/8" = 1'

M MONTANA STATE UNIVERSITY
CAMPUS PLANNING,
DESIGN & CONSTRUCTION
BOZEMAN, MONTANA
PHONE: 406.994.5413 FAX: 406.994.5665

INDEX #
19
BUILDING #
301

Mar 19, 2015 - 2:02pm - 301_A4.dwg
H:\Hamilton Hall\Building Plan - Book Copy



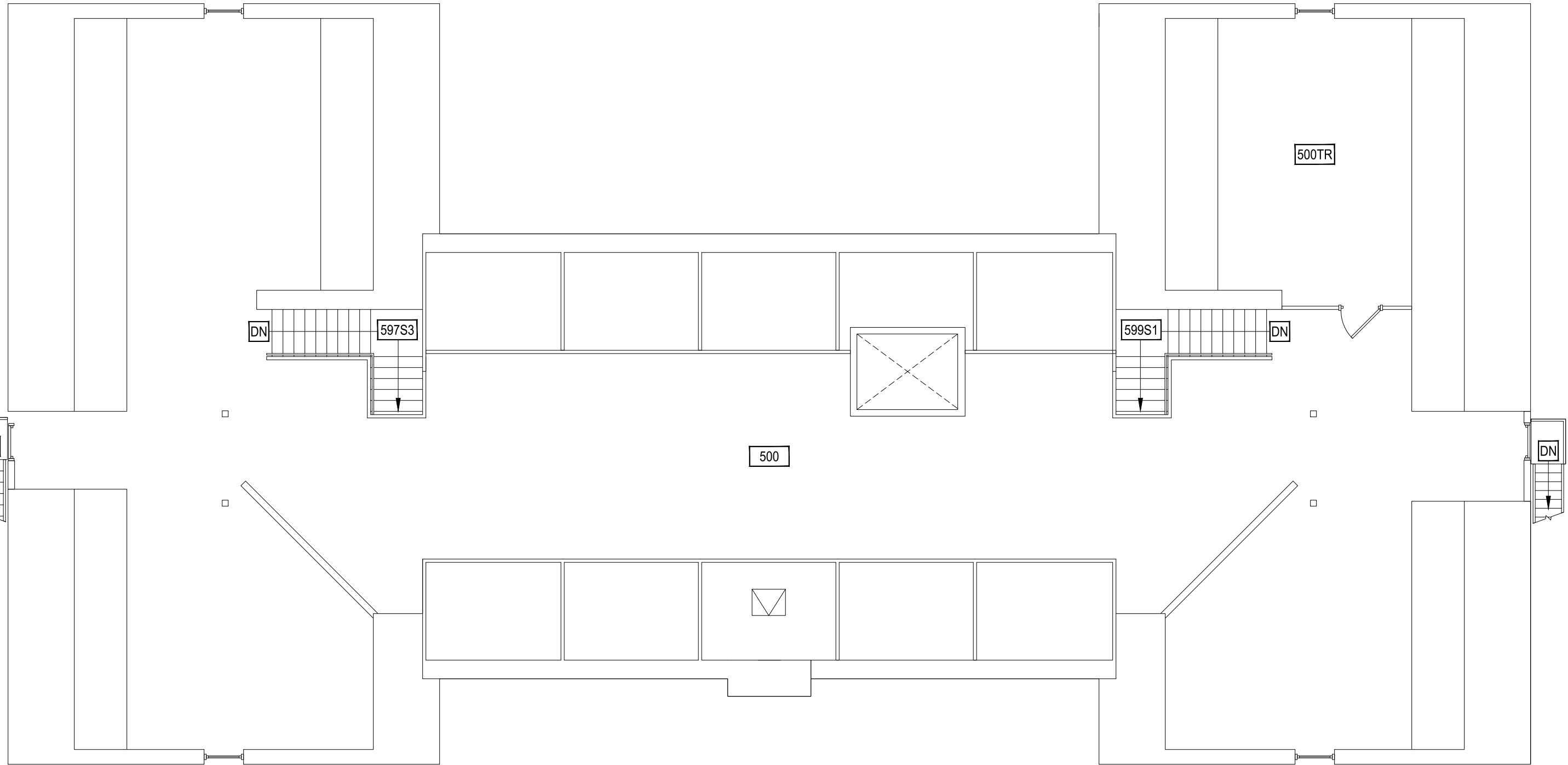
1 HAMILTON HALL - FOURTH LEVEL
SCALE: 1/8" = 1'



M MONTANA STATE UNIVERSITY
CAMPUS PLANNING,
DESIGN & CONSTRUCTION
BOZEMAN, MONTANA
PHONE: 406.994.5413 FAX: 406.994.5665

INDEX #
19
BUILDING #
301

Mar 19, 2015 - 2:02pm - 301_A5.dwg
H:\Hamilton Hall\Building Plan - Book Copy



1

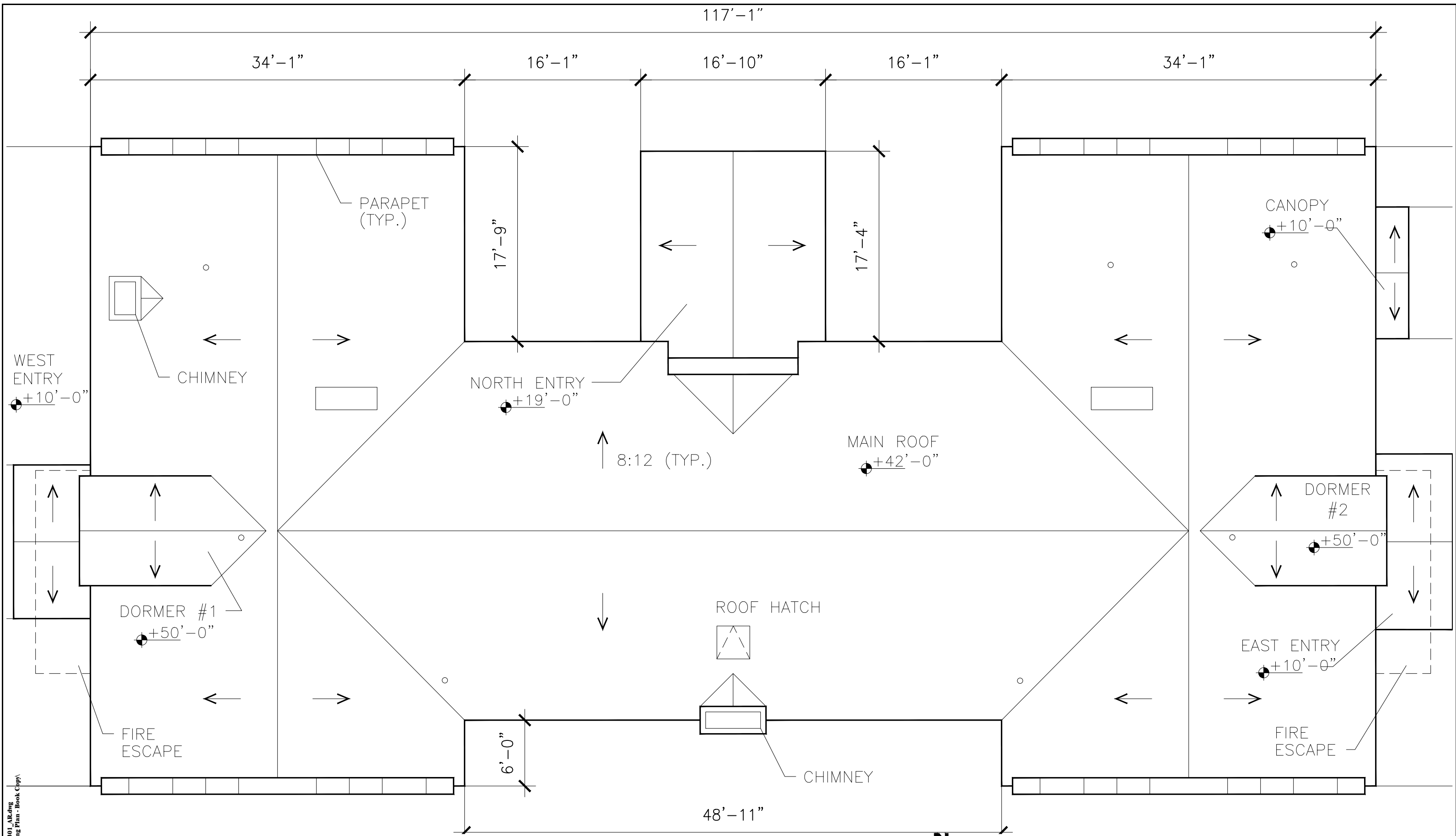
HAMILTON HALL - FIFTH LEVEL

SCALE: 1/8" = 1'



M MONTANA
STATE UNIVERSITY
CAMPUS PLANNING,
DESIGN & CONSTRUCTION
BOZEMAN, MONTANA
PHONE: 406.994.5413 FAX: 406.994.5665

INDEX #
19
BUILDING #
301



Mar 19, 2015 - 2:02pm - 301_AR.dwg
 H:\Hamilton Hall\Building Plan - Book Copy

1 HAMILTON HALL - ROOF LEVEL
 SCALE: 1/8" = 1'

MONTANA STATE UNIVERSITY CAMPUS PLANNING, DESIGN & CONSTRUCTION BOZEMAN, MONTANA PHONE: 406.994.5413 FAX: 406.994.5665	INDEX #
	19
	BUILDING #
	301