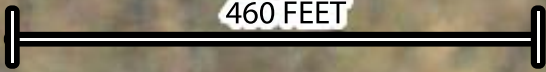


# RED BLUFF MAP (PAGE 1 OF 2)



460 FEET



2423 - LUMBER SHED

REMAINS OF  
HISTORIC  
STONEHOUSE

\*STATION BUILDINGS MOVED SOUTH  
ALONG BRADLEY CREEK ROAD AFTER FIRE

BRADLEY CREEK ROAD

FIELD SHEDS 2415

2413

2414

2426 - STONE COW BARN



2419 - BUTLER BIN  
2429 - BUTLER GRANARY  
2444 - GARAGE #1  
2441 - RESIDENCE #1  
SHEEP CORRALS  
2448 - LAMBING BARN  
2437 - MIXING BARN  
2446 - HOPPER BIN  
2432 - LAMBING BARN  
2438 - SHEEP OFFICE  
SHEEP QUONSET  
SHEEP QUONSET  
2443 - SHOP  
2442 - RESIDENCE #2  
2445 - GARAGE #2

PLASTIC STORAGE CONTAINERS

BRADLEY CREEK ROAD

2440 - CALVING BARN  
(1800 FEET SOUTH)



\*BUILDING DIMENSIONS AND ORIENTATIONS ARE NOT EXACT