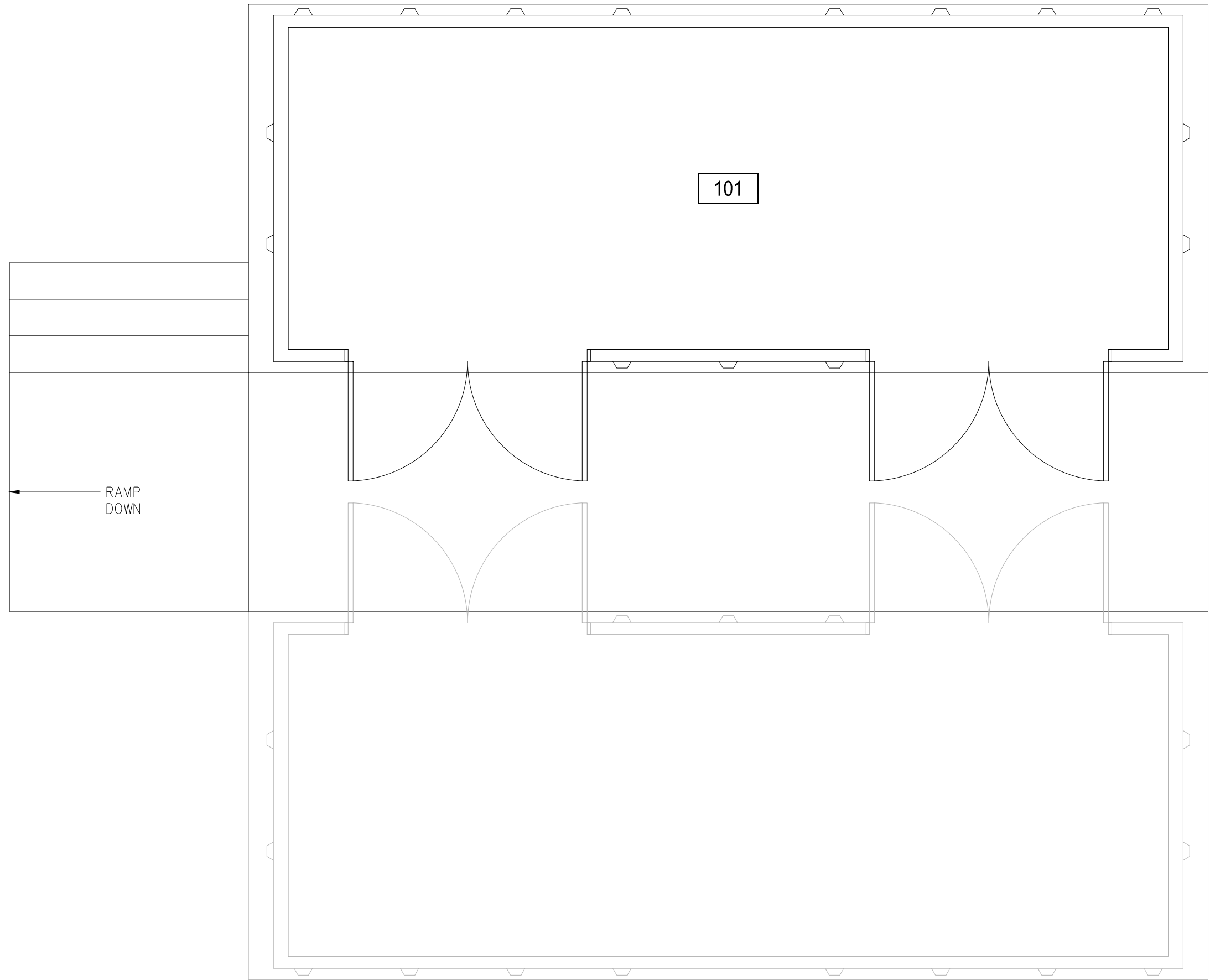


Oct 01, 2012 - 2:01pm - 228101_A1.dwg
C:\Users\gruner\appdata\local\temp\AcPublish_1352



1

CHEM STORES NORTH STORAGE CONTAINER

SCALE: 3/8" = 1'



M MONTANA
STATE UNIVERSITY
FACILITIES PLANNING,
DESIGN & CONSTRUCTION
BOZEMAN, MONTANA
PHONE: 406.994.4131 FAX: 406.994.6572

INDEX #	97
BUILDING #	228101