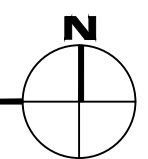


1

FACULTY COURT - 15 - FIRST LEVEL

SCALE: 5/32" = 1'



May 04, 2012 - 1:10pm - 220 - A1.dwg  
 H:\Faculty Court-15\Building Plan - Book Copy\


**MONTANA**  
 STATE UNIVERSITY  
 FACILITIES PLANNING,  
 DESIGN & CONSTRUCTION  
 BOZEMAN, MONTANA  
 PHONE: 406.994.4131 FAX: 406.994.6572

INDEX #	<b>62</b>
BUILDING #	<b>220</b>



1

FACULTY COURT - 15 - ROOF LEVEL

SCALE: 5/32" = 1'

