

Nov 18, 2016 - 7:35am - 17% AR.dwg  
E:\jabs Hall\Bldg Plan Book\

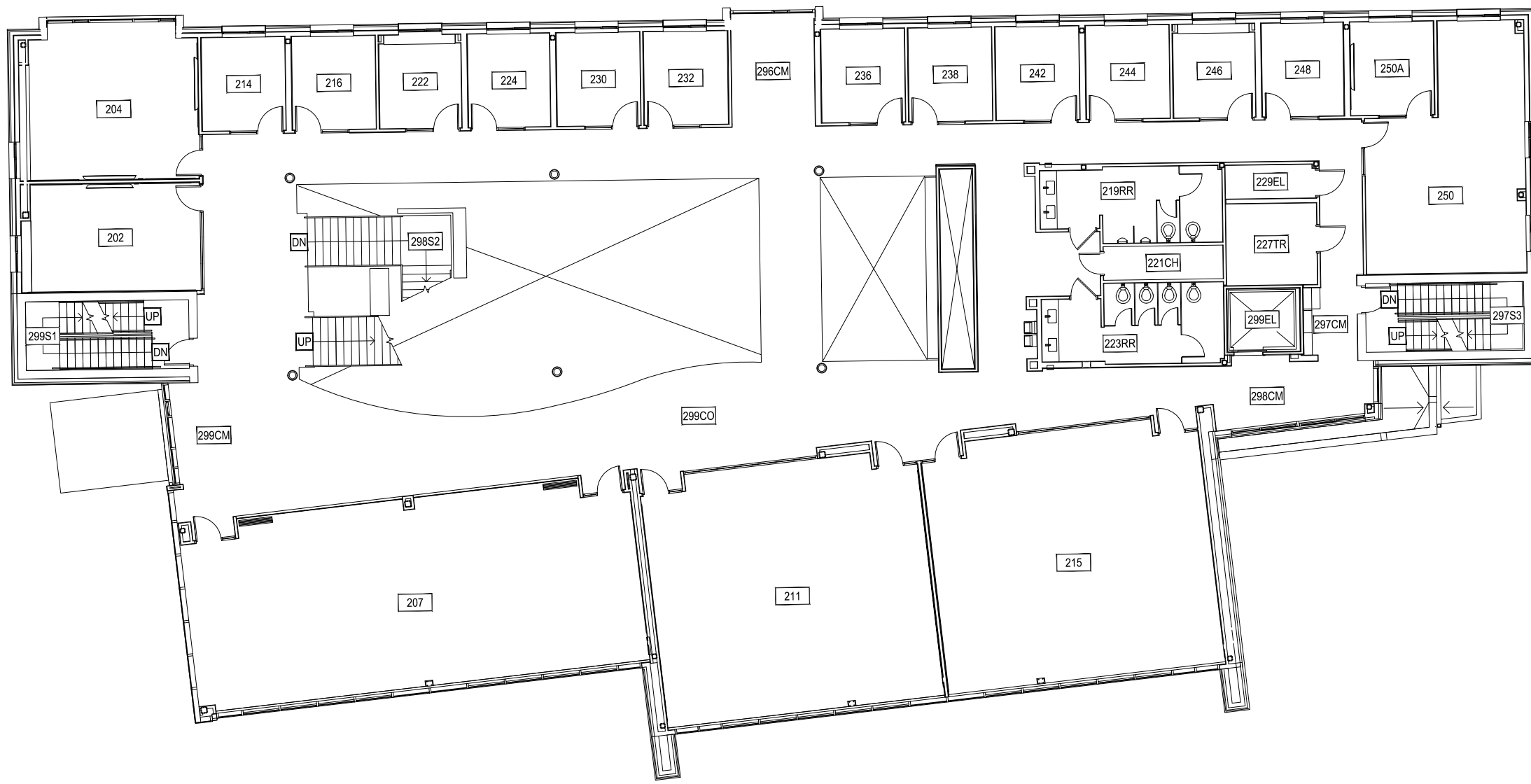
1
**JABS HALL - BASEMENT LEVEL**  
 SCALE: 1/16" = 1'




**MONTANA**  
 STATE UNIVERSITY  
 CAMPUS PLANNING,  
 DESIGN & CONSTRUCTION  
 BOZEMAN, MONTANA  
 PHONE: 406.994.5413 FAX: 406.994.5665

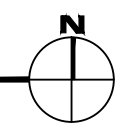
INDEX #	<b>139</b>
BUILDING #	<b>178</b>





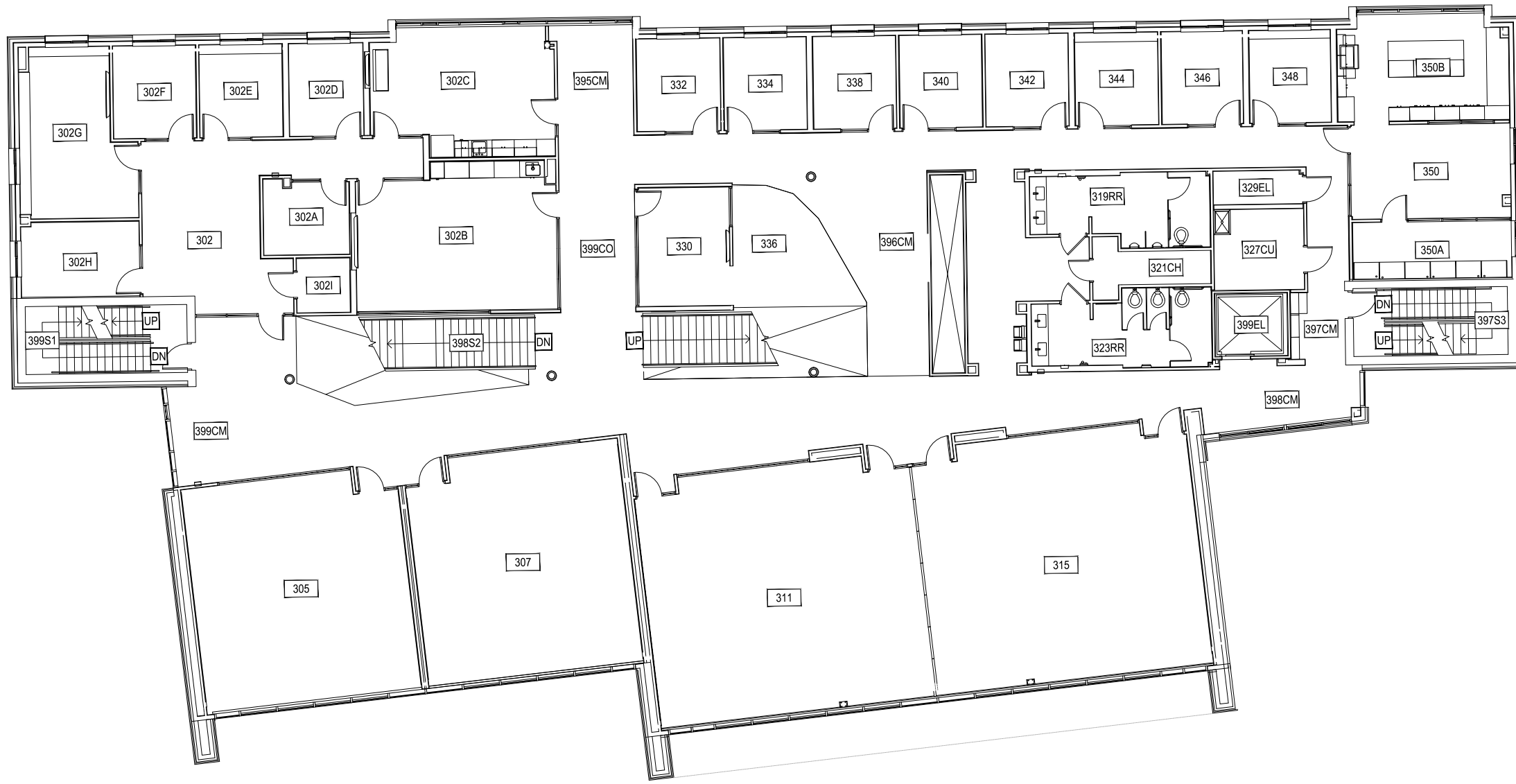
Nov 18, 2016 - 7:35am - 17% A2.dwg  
H:\jabs Hall\Bldg Plan Book\

**1** JABS HALL - SECOND LEVEL  
SCALE: 1/16" = 1'



**M** MONTANA STATE UNIVERSITY  
CAMPUS PLANNING,  
DESIGN & CONSTRUCTION  
BOZEMAN, MONTANA  
PHONE: 406.994.5413 FAX: 406.994.5665

INDEX #  
**139**  
BUILDING #  
**178**



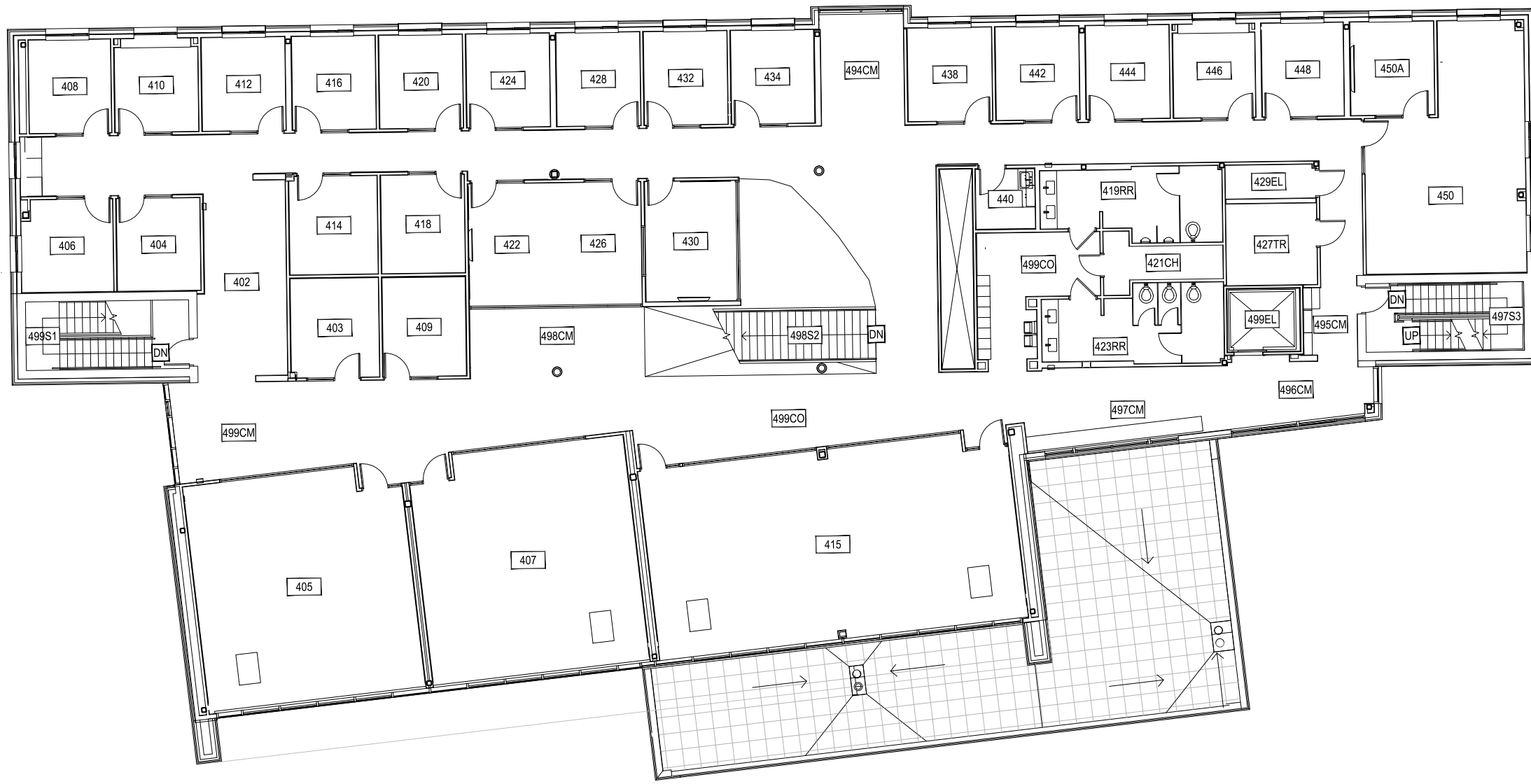
1 JABS HALL - THIRD LEVEL  
SCALE: 1/16" = 1'



Nov 18, 2016 - 7:35am - 17% A3.dwg  
E:\jabs Hall\Bldg Plan Book\

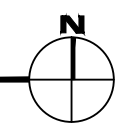
**M** MONTANA STATE UNIVERSITY  
CAMPUS PLANNING,  
DESIGN & CONSTRUCTION  
BOZEMAN, MONTANA  
PHONE: 406.994.5413 FAX: 406.994.5665

INDEX #	<b>139</b>
BUILDING #	<b>178</b>



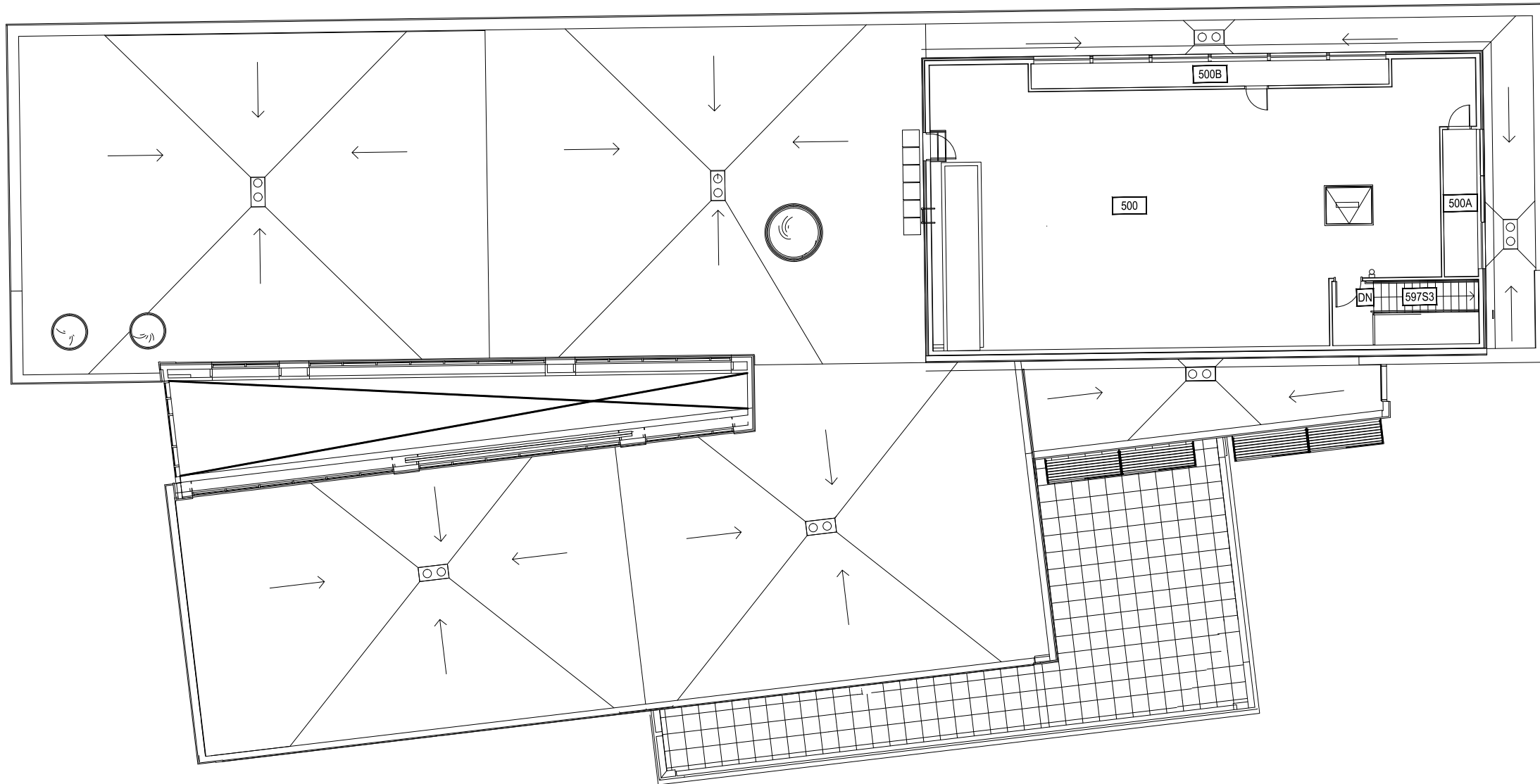
Nov 18, 2016 - 7:35am - 17% A4.dwg  
E:\jabs Hall\Bldg Plan Book\

**1** JABS HALL - FOURTH LEVEL  
SCALE: 1/16" = 1'



**M** MONTANA STATE UNIVERSITY  
CAMPUS PLANNING,  
DESIGN & CONSTRUCTION  
BOZEMAN, MONTANA  
PHONE: 406.994.5413 FAX: 406.994.5665

INDEX #	<b>139</b>
BUILDING #	<b>178</b>



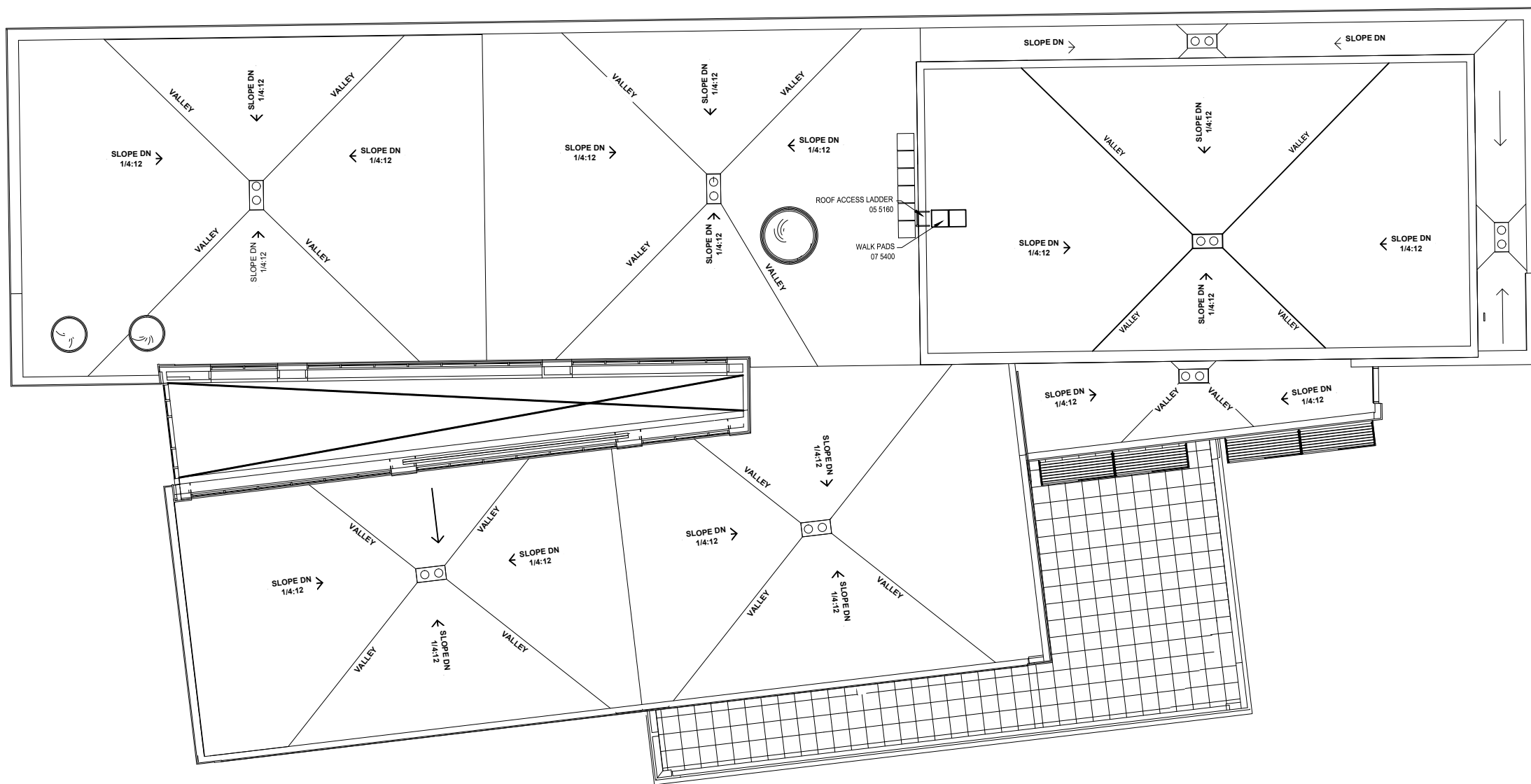
1 JABS HALL - PENTHOUSE LEVEL  
SCALE: 1/16" = 1'



Nov 18, 2016 - 7:35am - 17% AP.dwg  
E:\jabs Hall\Bldg Plan Book\

**M** MONTANA STATE UNIVERSITY  
CAMPUS PLANNING,  
DESIGN & CONSTRUCTION  
BOZEMAN, MONTANA  
PHONE: 406.994.5413 FAX: 406.994.5665

INDEX #	<b>139</b>
BUILDING #	<b>178</b>



1 JABS HALL - ROOF LEVEL  
 SCALE: 1/16" = 1'



Nov 18, 2016 - 7:35am - 17% AR.dwg  
 H:\jabs Hall\Bldg Plan Book\

**M MONTANA STATE UNIVERSITY**  
 CAMPUS PLANNING,  
 DESIGN & CONSTRUCTION  
 BOZEMAN, MONTANA  
 PHONE: 406.994.5413 FAX: 406.994.5665

INDEX #	<b>139</b>
BUILDING #	<b>178</b>