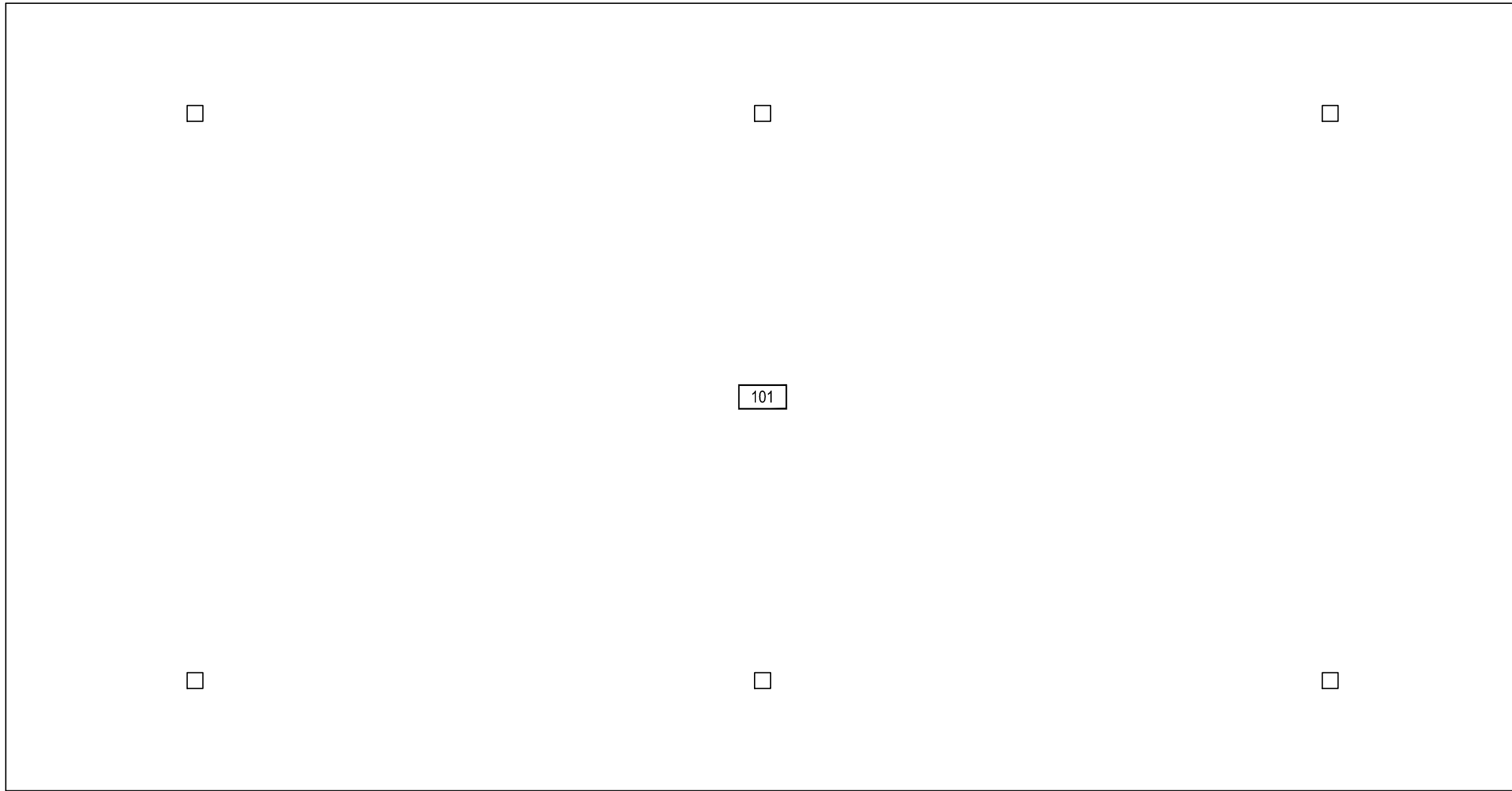


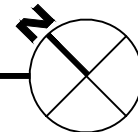
Nov 13, 2012 - 1:01pm - 154\_A1.dwg  
H:\Bobcat Stadium\Building Plan - Book Copy



1

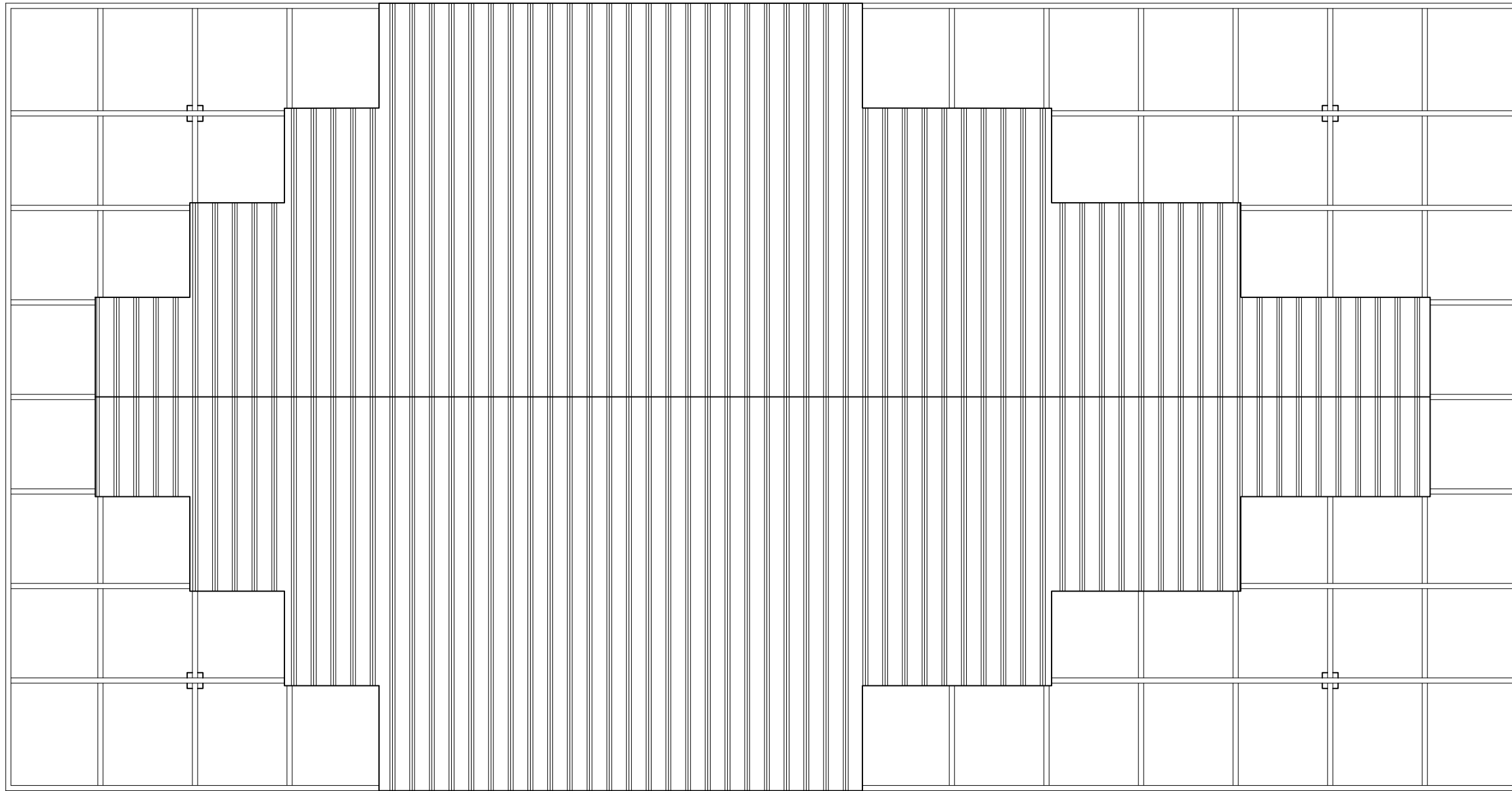
BOBCAT STADIUM - STADIUM METAL CANOPY - FIRST LEVEL

SCALE: 1/8" = 1'



**M** MONTANA  
STATE UNIVERSITY  
FACILITIES PLANNING,  
DESIGN & CONSTRUCTION  
BOZEMAN, MONTANA  
PHONE: 406.994.4131 FAX: 406.994.6572

INDEX #	<b>66</b>
BUILDING #	<b>154</b>

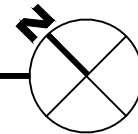


Nov 13, 2012 - 1:01pm - 154\_AR.dwg  
 H:\Bobcat Stadium\Building Plan - Book Copy

1

**BOBCAT STADIUM - STADIUM METAL CANOPY - ROOF LEVEL**

SCALE: 1/8" = 1'




**MONTANA**  
 STATE UNIVERSITY  
 FACILITIES PLANNING,  
 DESIGN & CONSTRUCTION  
 BOZEMAN, MONTANA  
 PHONE: 406.994.4131 FAX: 406.994.6572

INDEX #	<b>66</b>
BUILDING #	<b>154</b>