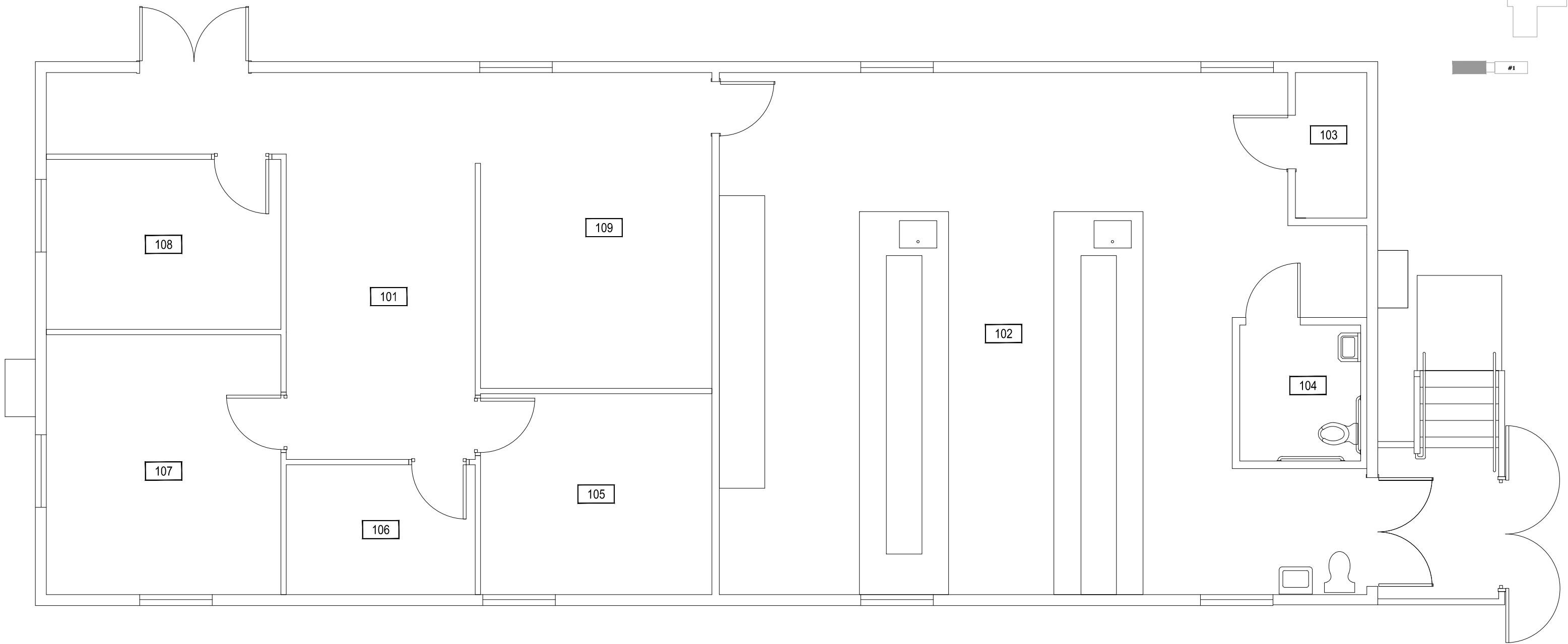


#1



Oct 12, 2012 - 2:00pm - 151_A1.dwg
C:\Users\gary.gramer\appdata\local\temp\AcPublish_5600

1 MARSH LABORATORY MODULAR #2 - FIRST LEVEL 

SCALE: 3/16" = 1'

M MONTANA STATE UNIVERSITY
FACILITIES PLANNING,
DESIGN & CONSTRUCTION
BOZEMAN, MONTANA
PHONE: 406.994.4131 FAX: 406.994.6572

INDEX # **73**
BUILDING # **151**