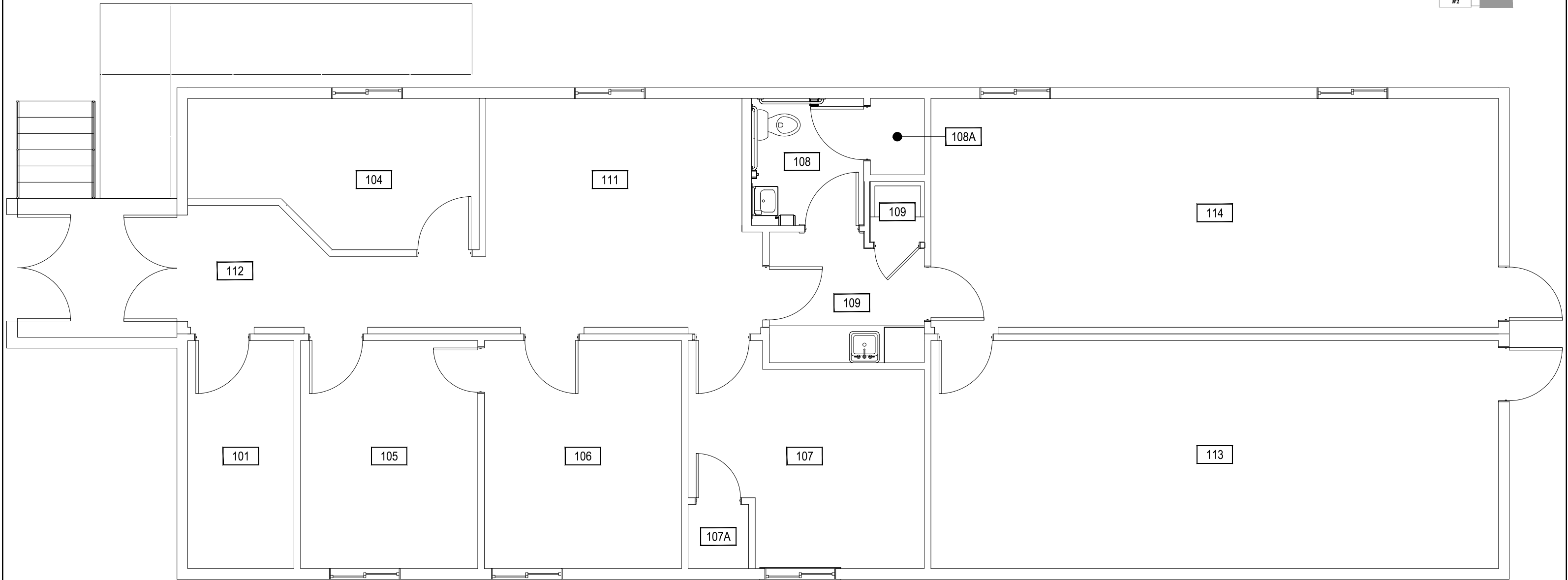
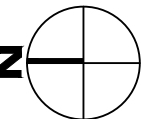




#2



Dec 20, 2016 - 10:07am - I5C_A1.dwg
C:\Users\gary.gramer\appdata\local\temp\AcPublish_14864\

1 MARSH LABORATORY MODULAR #1 - FIRST LEVEL 

SCALE: 3/16" = 1'

M MONTANA STATE UNIVERSITY
CAMPUS PLANNING,
DESIGN & CONSTRUCTION
BOZEMAN, MONTANA
PHONE: 406.994.5413 FAX: 406.994.5665

INDEX # 72
BUILDING # 150