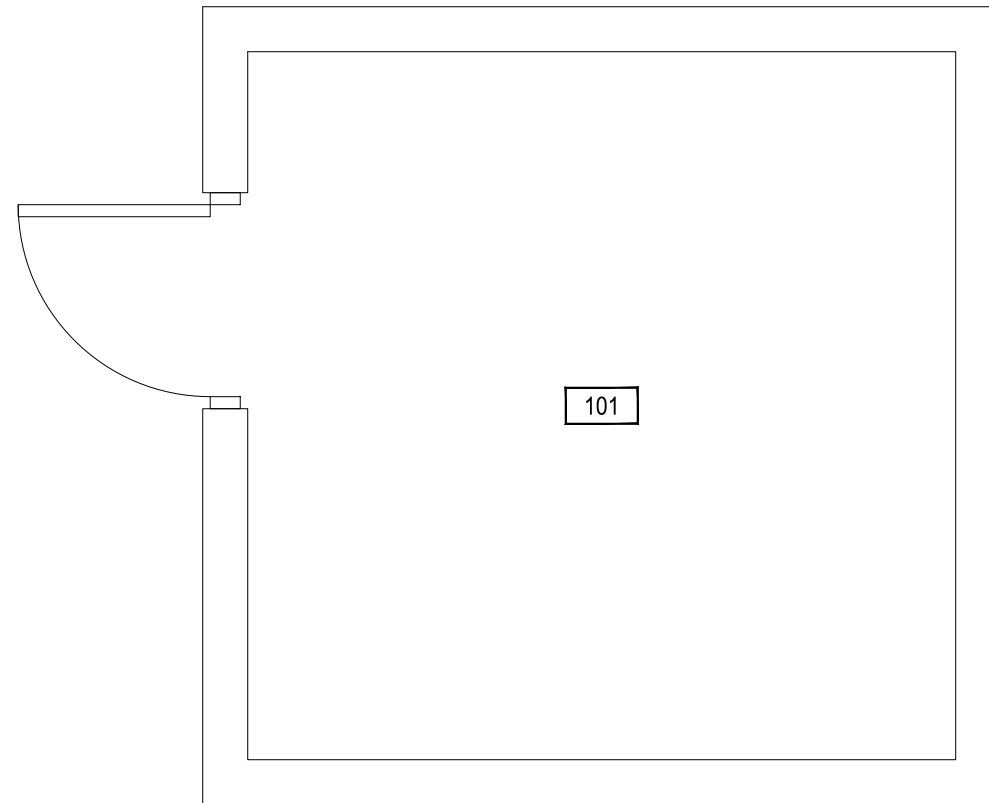


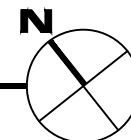
May 30, 2012 - 7:39am - E38107\_A1\_Storage Shed.dwg  
H:\MOR-Tinsley Farm Complex\Building Plan - Book Copy\



1

MOR-TINSLEY FARM - STORAGE SHED

SCALE: 3/8" = 1'



**M** MONTANA  
STATE UNIVERSITY  
FACILITIES PLANNING,  
DESIGN & CONSTRUCTION  
BOZEMAN, MONTANA  
PHONE: 406.994.4131 FAX: 406.994.6572

INDEX #  
**105**  
BUILDING #  
**138107**