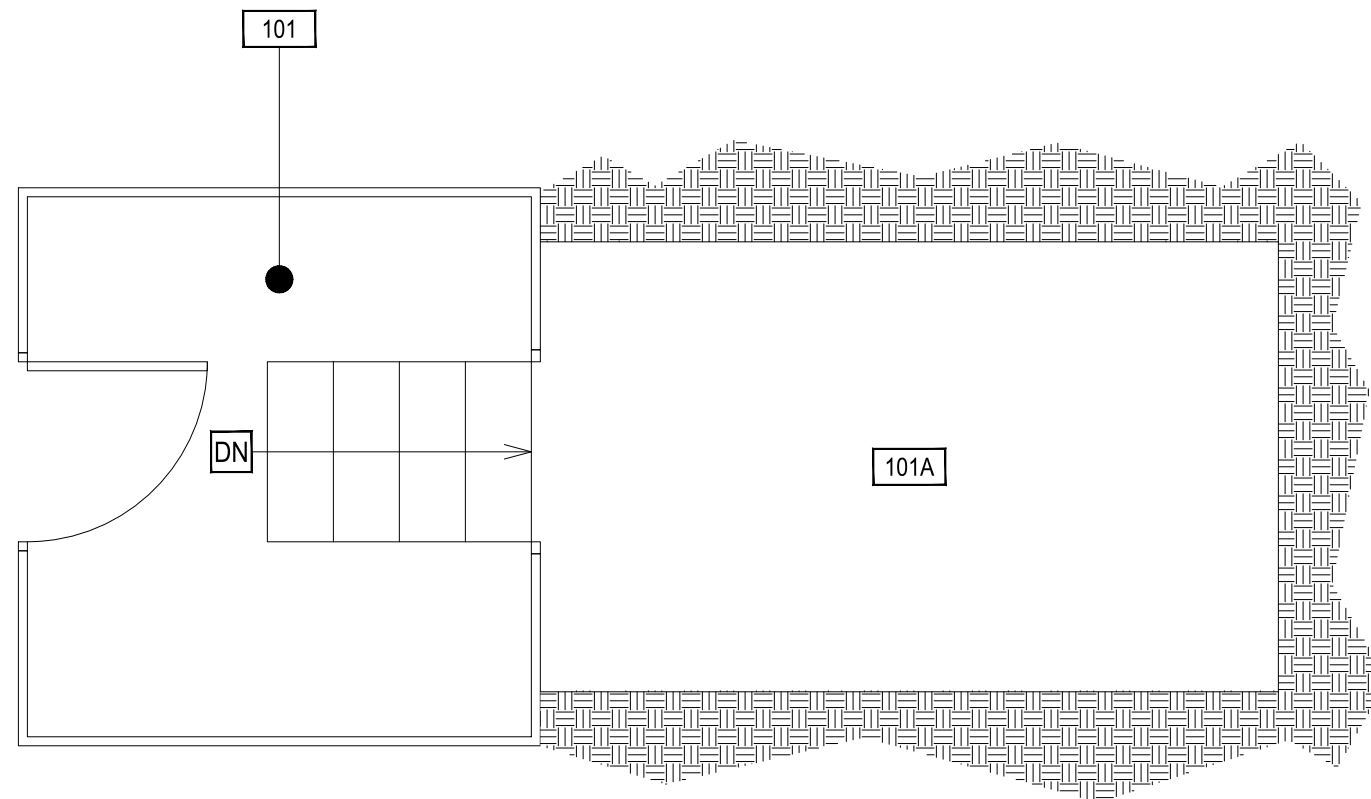


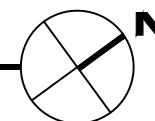
May 30, 2012 - 7:39am - L38104_A1_Root Cellar.dwg
H:\MOR-Tinsley Farm Complex\Building Plan - Book Copy\



1

MOR-TINSLEY FARM - ROOT CELLAR

SCALE: 3/8" = 1'



M MONTANA
STATE UNIVERSITY
FACILITIES PLANNING,
DESIGN & CONSTRUCTION
BOZEMAN, MONTANA
PHONE: 406.994.4131 FAX: 406.994.6572

INDEX #
105
BUILDING #
138104