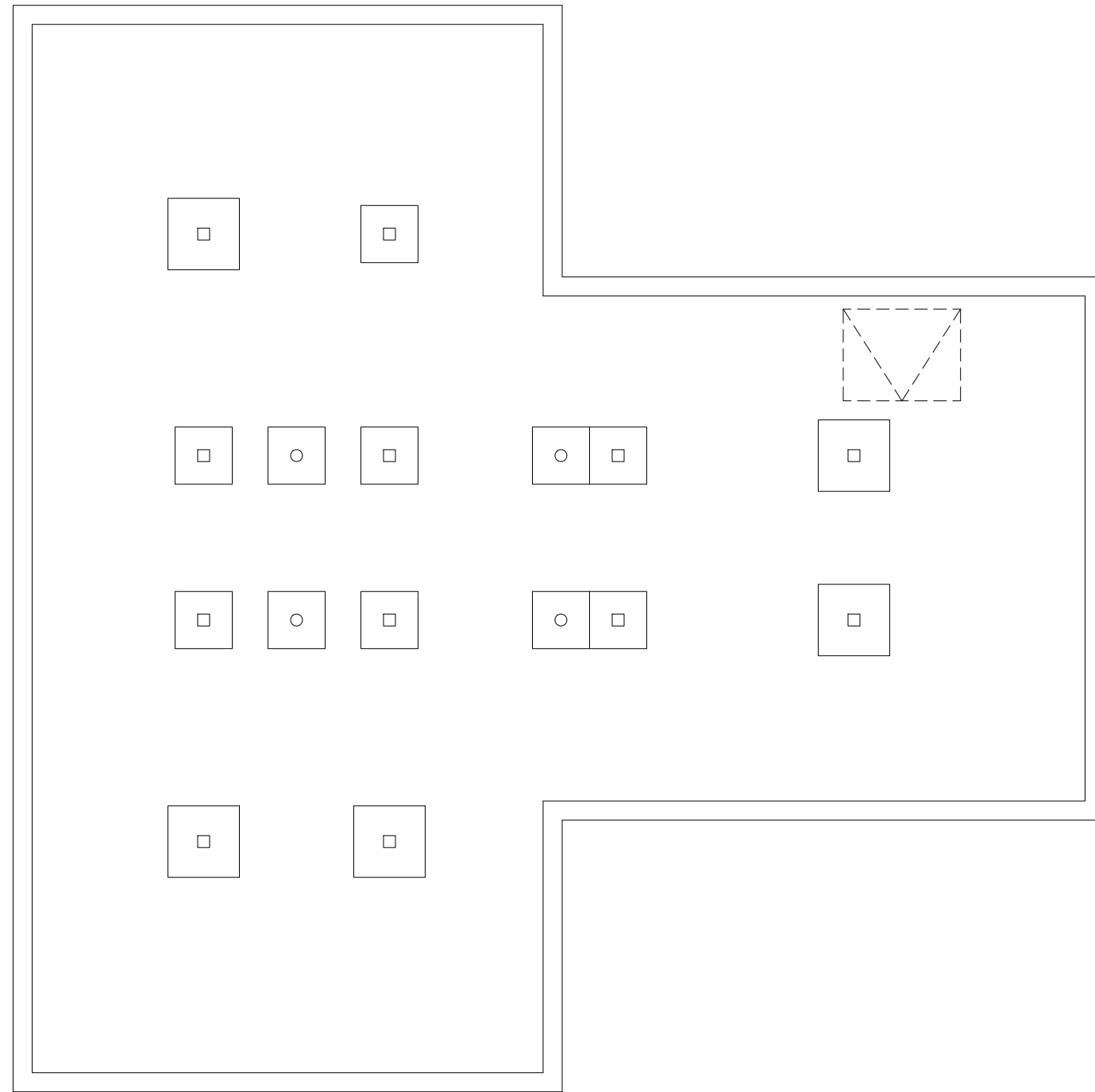


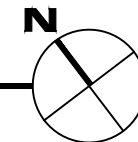
May 30, 2012 - 7:39am - I38101_A1_Tinsley Homestead_AF.dwg
H:\MOR-Tinsley Farm Complex\Building Plan - Book Copy



1

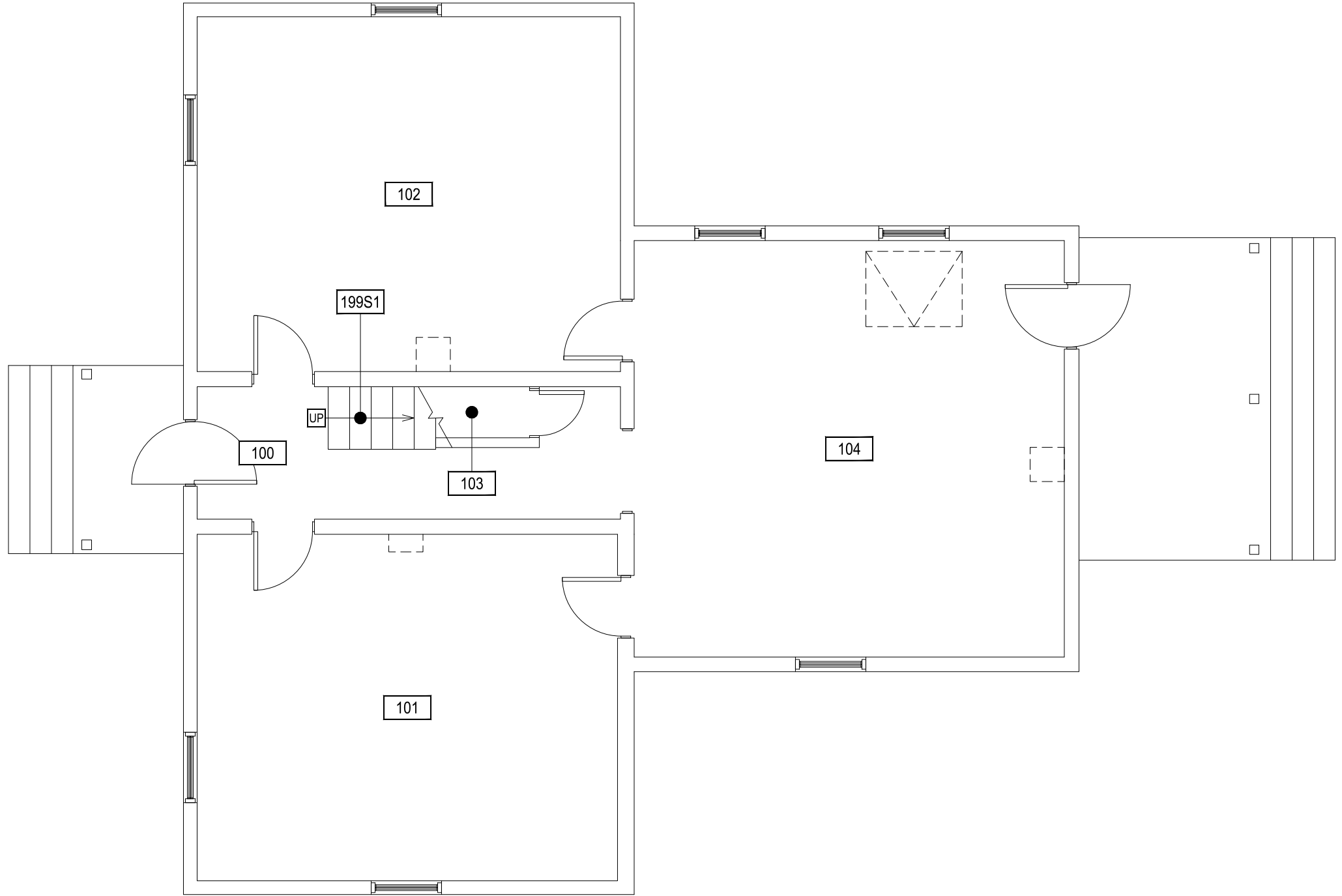
MOR-TINSLEY FARM - HOMESTEAD - FOUNDATION LEVEL

SCALE: 3/16" = 1'



M MONTANA
STATE UNIVERSITY
FACILITIES PLANNING,
DESIGN & CONSTRUCTION
BOZEMAN, MONTANA
PHONE: 406.994.4131 FAX: 406.994.6572

INDEX #
105
BUILDING #
138101



1
MOR-TINSLEY FARM - HOMESTEAD - FIRST LEVEL



 SCALE: 3/16" = 1'

May 30, 2012 - 7:39am - L38101_A1_Tinsley Homestead_A1.dwg
 H:\MOR-Tinsley Farm Complex\Building Plan - Book Copy

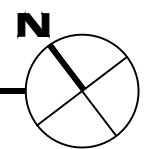

MONTANA
 STATE UNIVERSITY
 FACILITIES PLANNING,
 DESIGN & CONSTRUCTION
 BOZEMAN, MONTANA
 PHONE: 406.994.4131 FAX: 406.994.6572

INDEX #	105
BUILDING #	138101

May 30, 2012 - 7:39am - I:38101_A1_Tinsley Homestead_A2.dwg
H:\MOR-Tinsley Farm Complex\Building Plan - Book Copy\



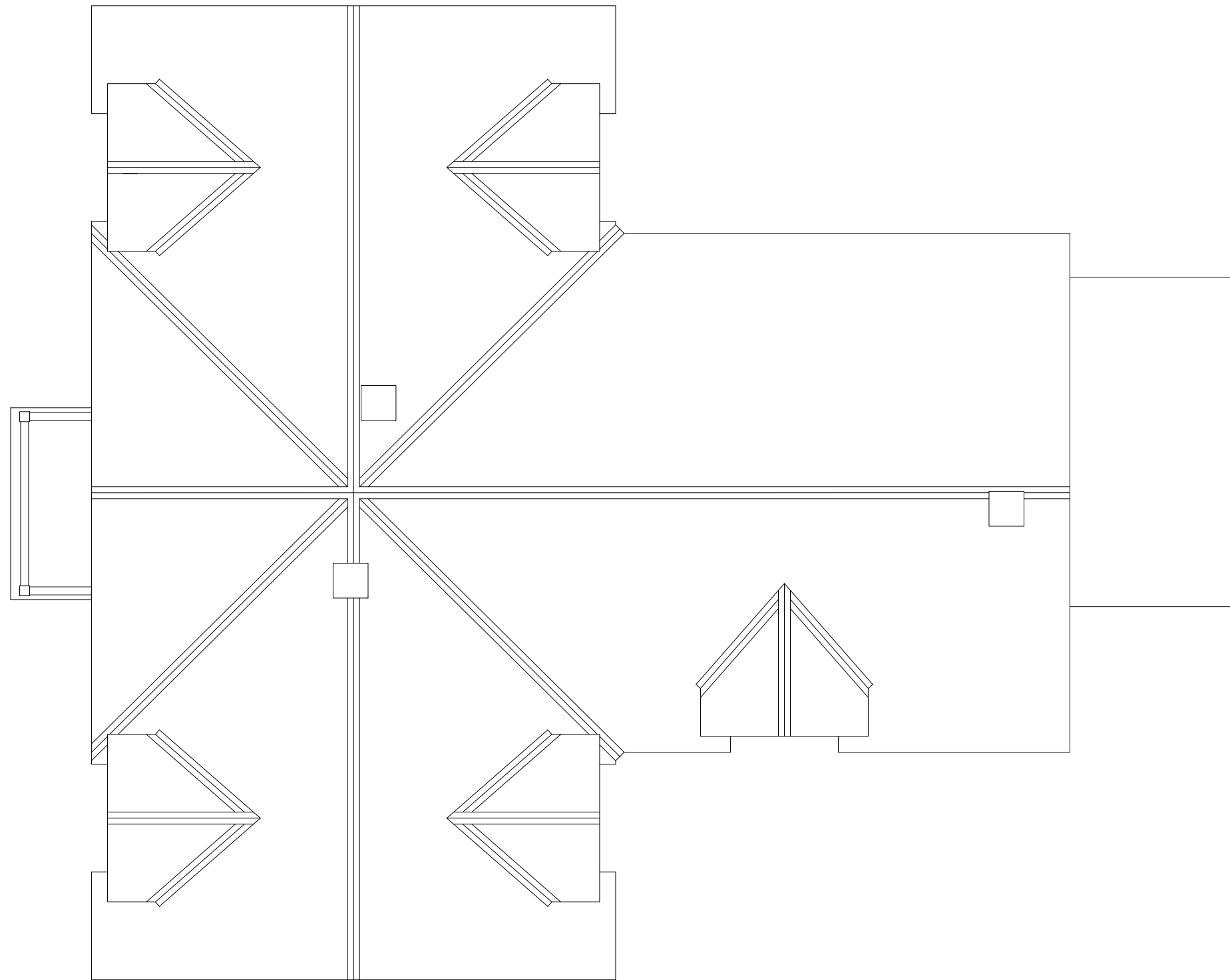
1 MOR-TINSLEY FARM - HOMESTEAD - SECOND LEVEL
SCALE: 3/16" = 1'



M MONTANA
STATE UNIVERSITY
FACILITIES PLANNING,
DESIGN & CONSTRUCTION
BOZEMAN, MONTANA
PHONE: 406.994.4131 FAX: 406.994.6572

INDEX #
105
BUILDING #
138101

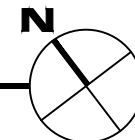
May 30, 2012 - 7:39am - I:\38101_A1_Tinsley Homestead_AR.dwg
H:\MOR-Tinsley Farm Complex\Building Plan - Book Copy



1

MOR-TINSLEY FARM - HOMESTEAD - ROOF LEVEL

SCALE: 3/16" = 1'



M MONTANA
STATE UNIVERSITY
FACILITIES PLANNING,
DESIGN & CONSTRUCTION
BOZEMAN, MONTANA
PHONE: 406.994.4131 FAX: 406.994.6572

INDEX #
105
BUILDING #
138101