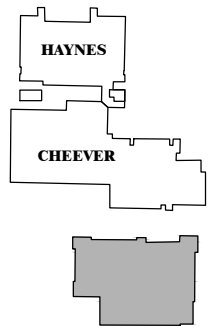
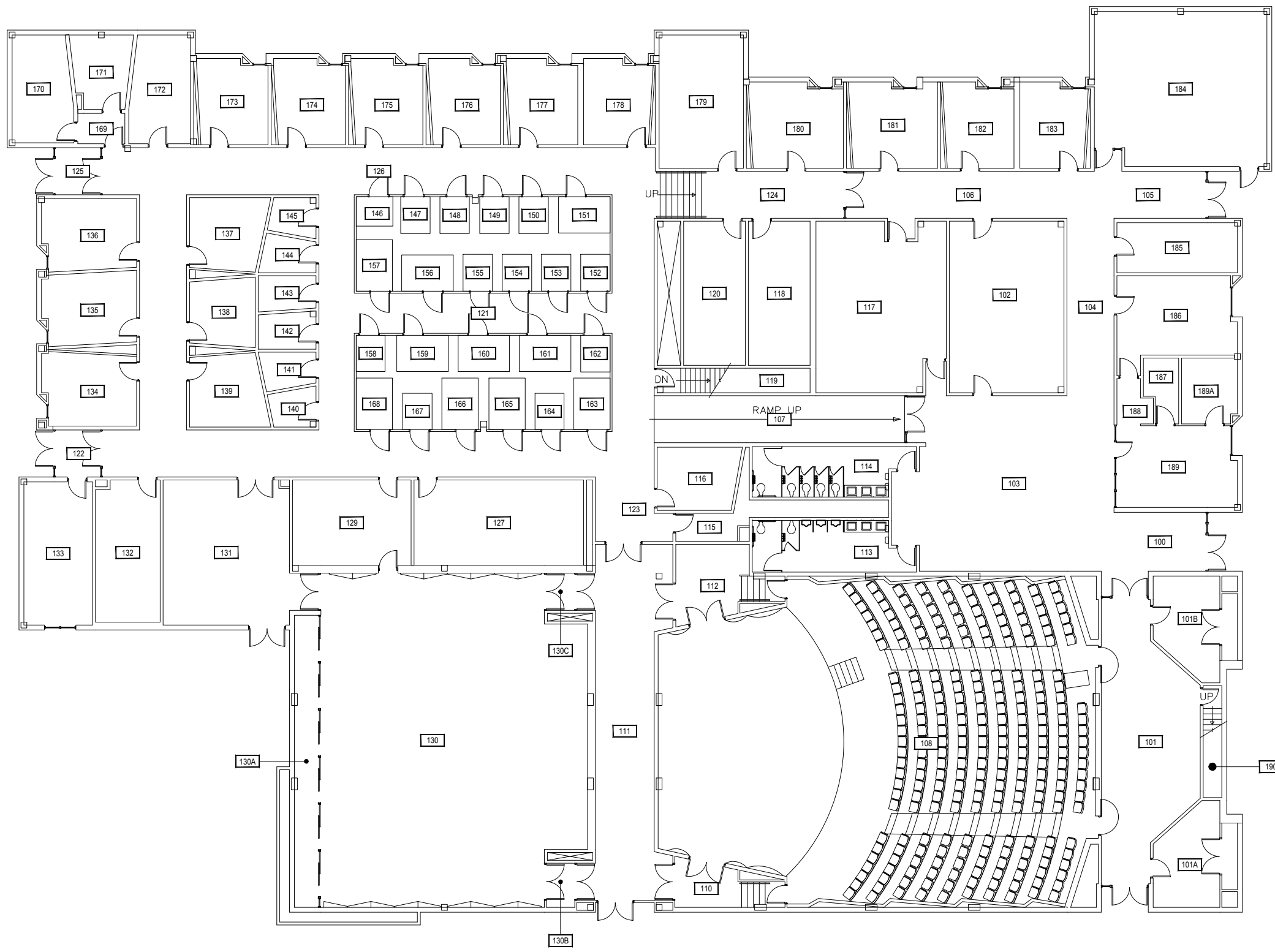


1
**HOWARD HALL - BASEMENT LEVEL**
  
 SCALE: 1" = 20'

Oct 26, 2017 - 8:04am - 126\_AB.dwg  
 H:\Creative Arts Complex\Howard Hall\Building Plan - Book Copy

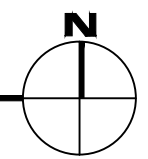
**MONTANA STATE UNIVERSITY**  
 CAMPUS PLANNING,  
 DESIGN & CONSTRUCTION  
 BOZEMAN, MONTANA  
 PHONE: 406.994.4131 FAX: 406.994.6572

INDEX #	<b>52</b>
BUILDING #	<b>126</b>



1

**HOWARD HALL - FIRST LEVEL**  
SCALE: 1" = 20'

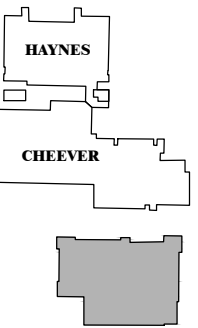
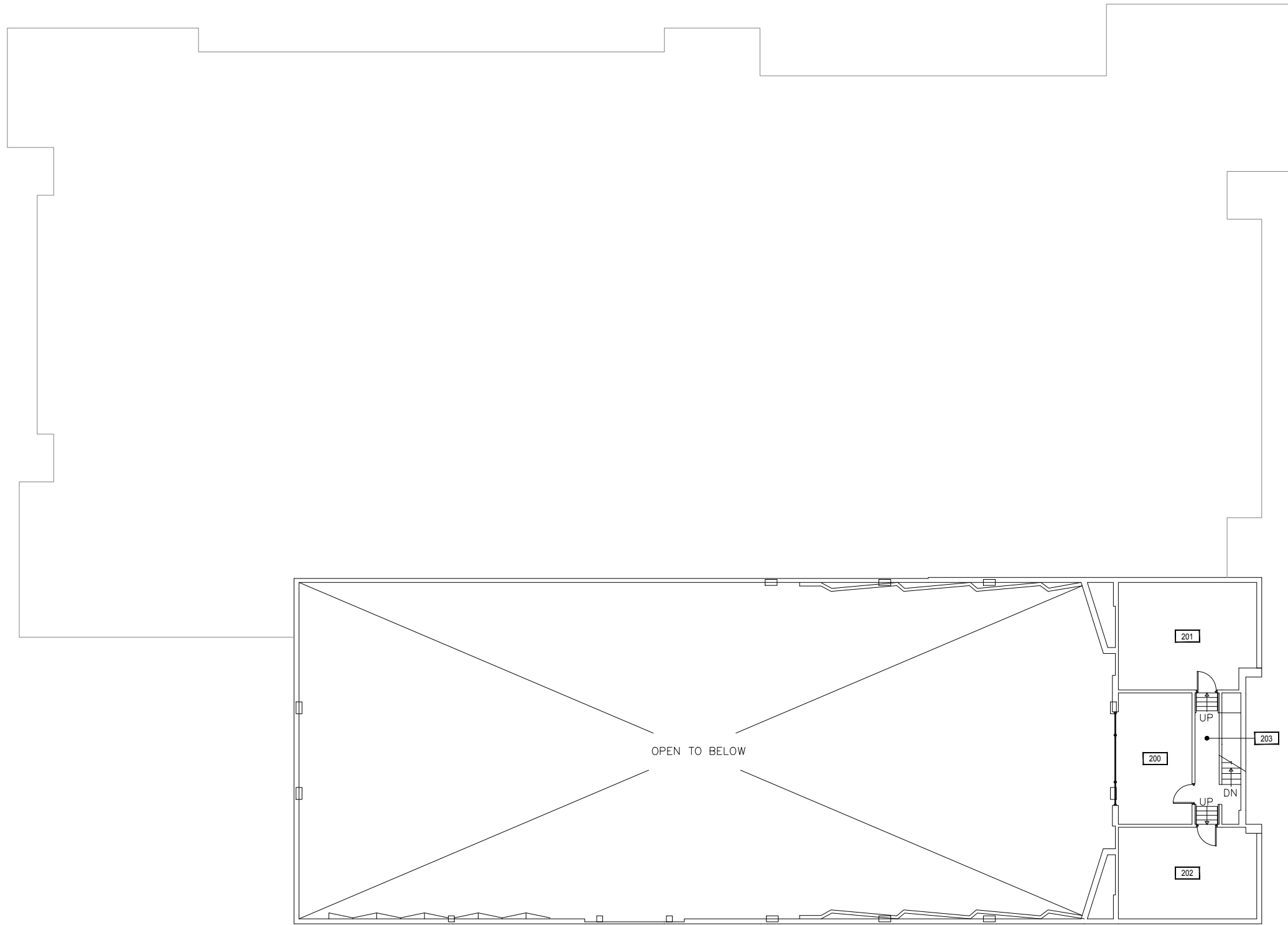


Oct 26, 2017 - 8:04am - 126\_A1.dwg  
H:\Creative Arts Complex\Howard Hall\Building Plan - Book Copy

**M MONTANA STATE UNIVERSITY**  
CAMPUS PLANNING,  
DESIGN & CONSTRUCTION  
BOZEMAN, MONTANA  
PHONE: 406.994.4131 FAX: 406.994.6572

INDEX # **52**  
BUILDING # **126**

Oct 26, 2017 - 8:04am - 126\_A2.dwg  
H:\Creative Arts Complex\Howard Hall\Building Plan - Book Copy

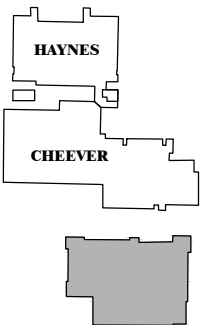
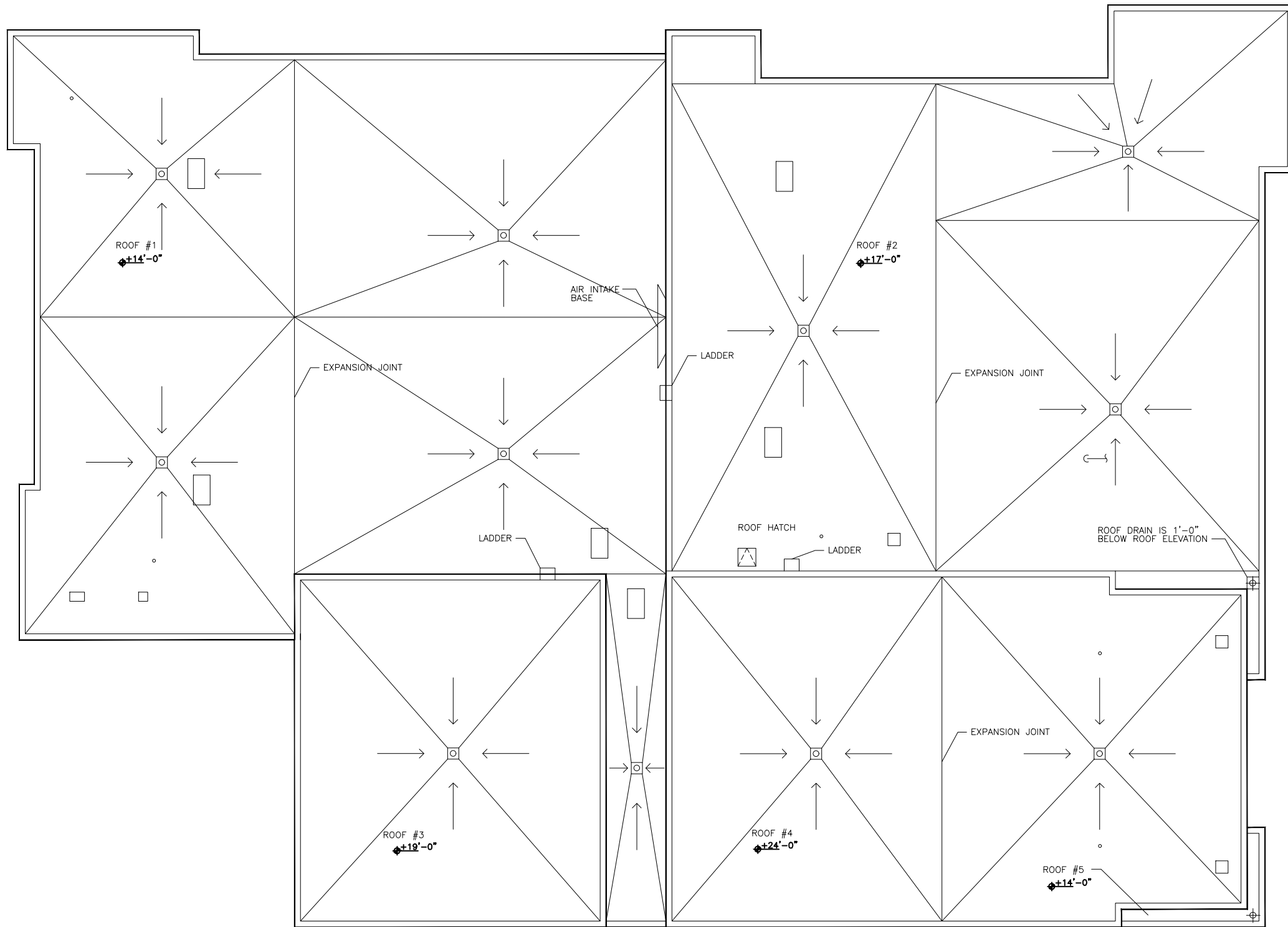


1 HOWARD HALL - SECOND LEVEL  
SCALE: 1" = 20'



**M** MONTANA STATE UNIVERSITY  
CAMPUS PLANNING,  
DESIGN & CONSTRUCTION  
BOZEMAN, MONTANA  
PHONE: 406.994.4131 FAX: 406.994.6572

INDEX # **52**  
BUILDING # **126**



1

**HOWARD HALL - ROOF LEVEL**  
SCALE: 1" = 20'



**M MONTANA STATE UNIVERSITY**  
CAMPUS PLANNING,  
DESIGN & CONSTRUCTION  
BOZEMAN, MONTANA  
PHONE: 406.994.4131 FAX: 406.994.6572

INDEX # **52**  
BUILDING # **126**