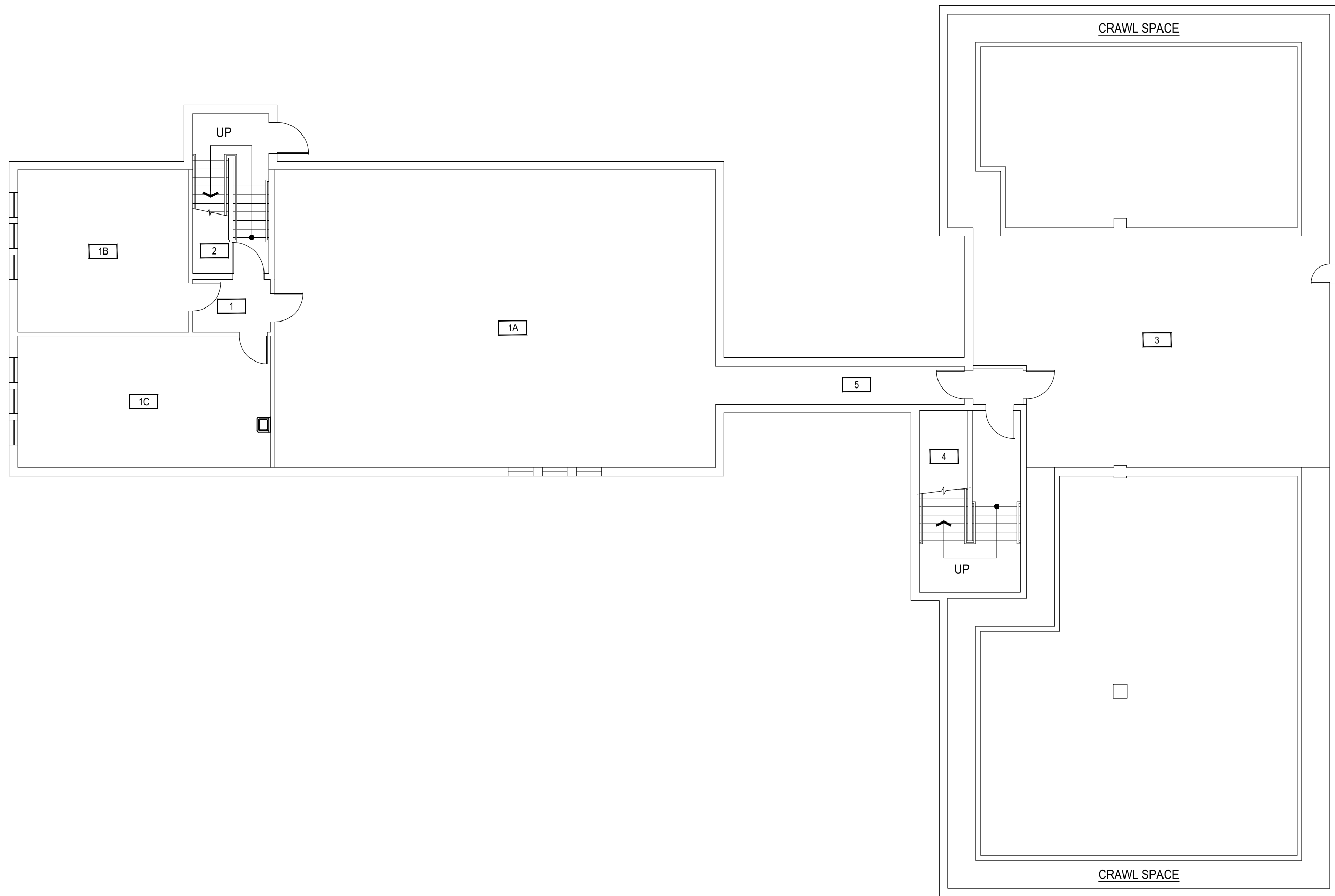


Dec 16, 2016 - 9:22am - 122_AB.dwg
H:\Anna Pearl Sherrick Hall\Building Plan - Book Copy\



1

ANNA PEARL SHERRICK HALL - BASEMENT LEVEL

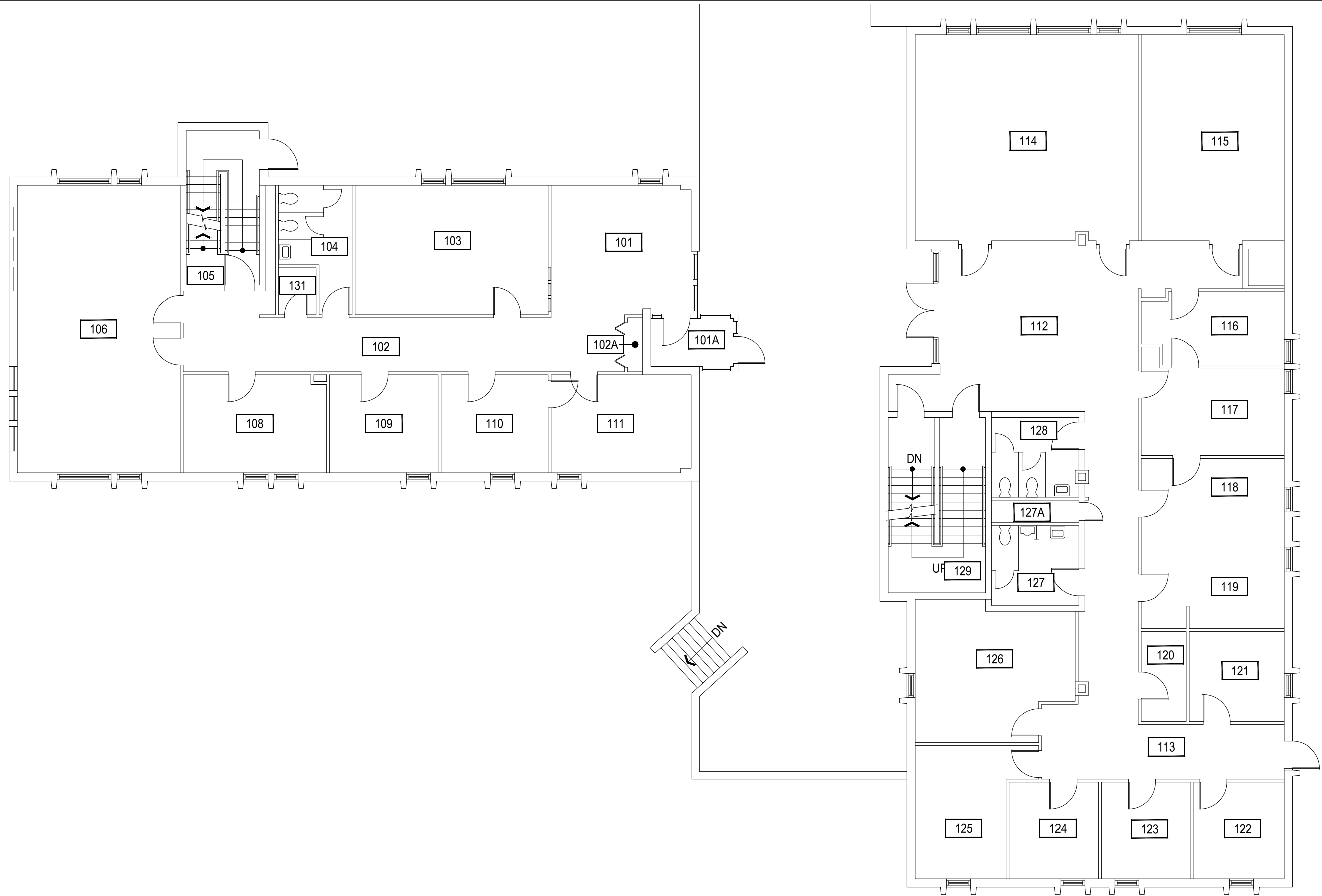
SCALE: 3/32" = 1'



M MONTANA
STATE UNIVERSITY
CAMPUS PLANNING,
DESIGN & CONSTRUCTION
BOZEMAN, MONTANA
PHONE: 406.994.5413 FAX: 406.994.5665

INDEX #
35
BUILDING #
122

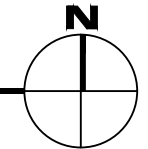
Dec 16, 2016 - 9:22am - 122_A1.dwg
H:\Anna Pearl Sherrick Hall\Building Plan - Book Copy\



1

ANNA PEARL SHERRICK HALL - FIRST LEVEL

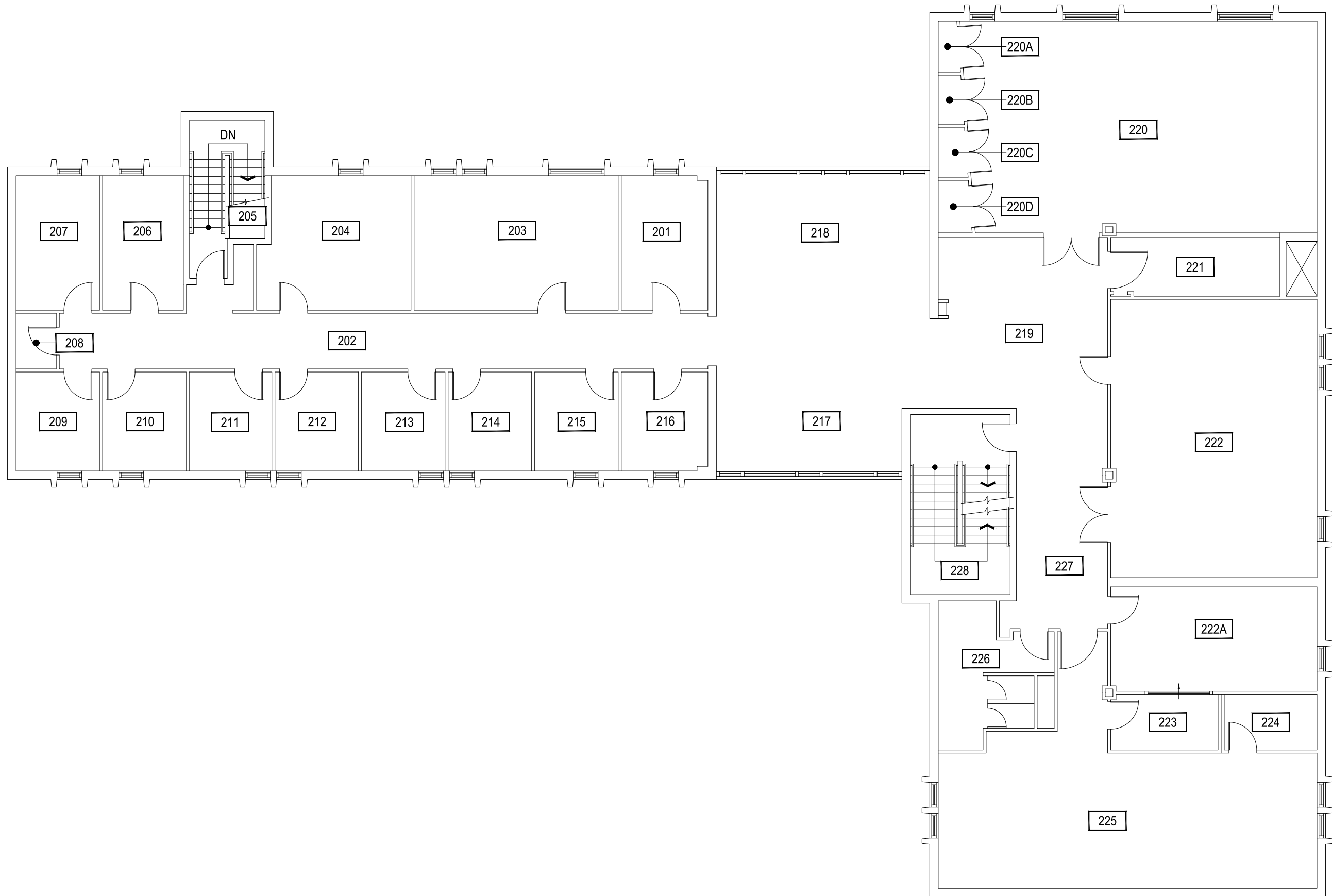
SCALE: 3/32" = 1'



M MONTANA STATE UNIVERSITY
CAMPUS PLANNING,
DESIGN & CONSTRUCTION
BOZEMAN, MONTANA
PHONE: 406.994.5413 FAX: 406.994.5665

INDEX #	35
BUILDING #	122

Dec 16, 2016 - 9:22am - 122_A3.dwg
H:\Anna Pearl Sherrick Hall\Building Plan - Book Copy\



1

ANNA PEARL SHERRICK HALL - SECOND LEVEL

SCALE: 3/32" = 1'



M MONTANA
STATE UNIVERSITY
CAMPUS PLANNING,
DESIGN & CONSTRUCTION
BOZEMAN, MONTANA
PHONE: 406.994.5413 FAX: 406.994.5665

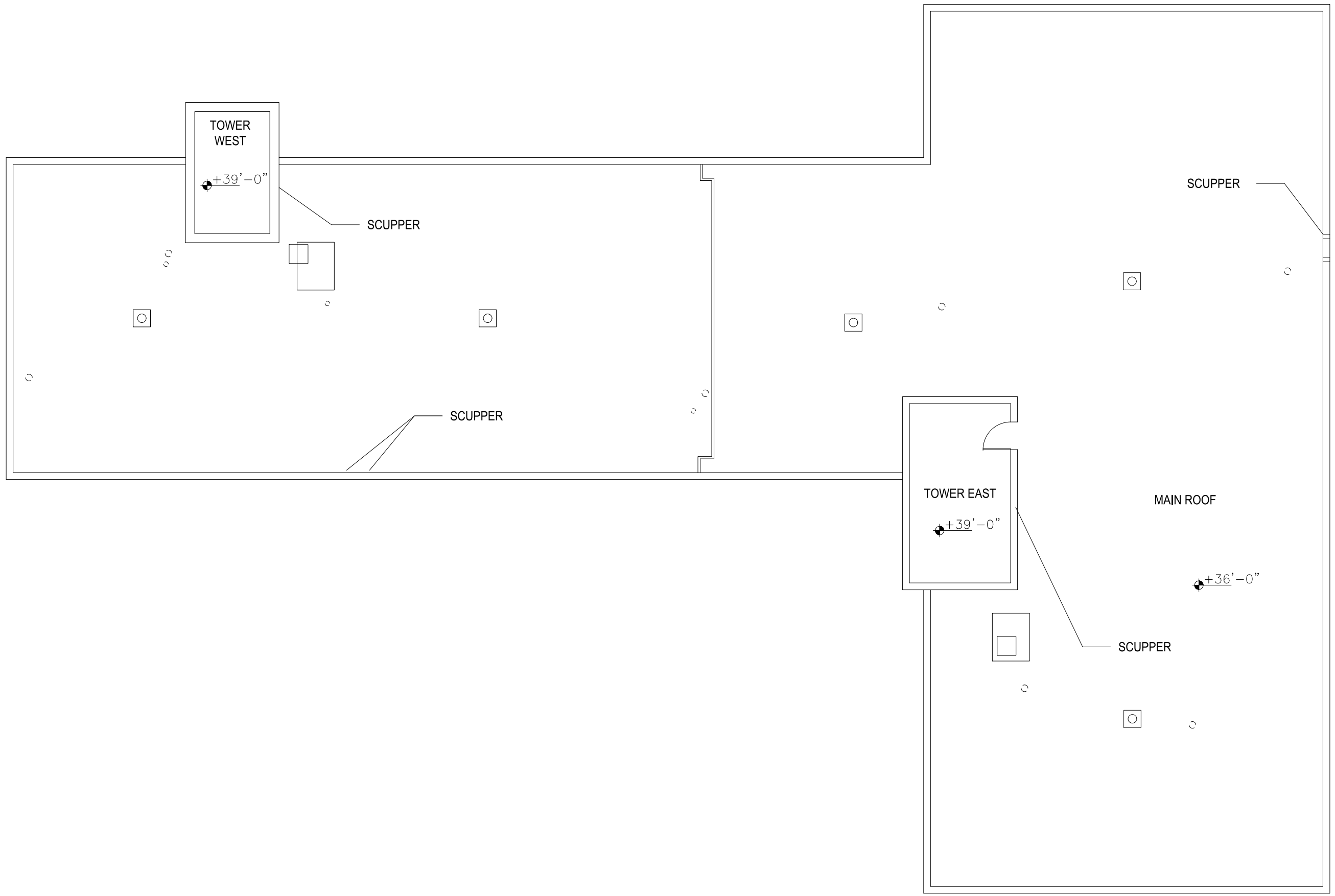
INDEX #

35

BUILDING #

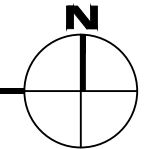
122

Dec 16, 2016 - 9:22am - 122_AR.dwg
H:\Anna Pearl Sherrick Hall\Building Plan - Book Copy\



1

ANNA PEARL SHERRICK HALL - ROOF LEVEL
SCALE: 3/32" = 1'



M MONTANA STATE UNIVERSITY
CAMPUS PLANNING,
DESIGN & CONSTRUCTION
BOZEMAN, MONTANA
PHONE: 406.994.5413 FAX: 406.994.5665

INDEX #	35
BUILDING #	122