

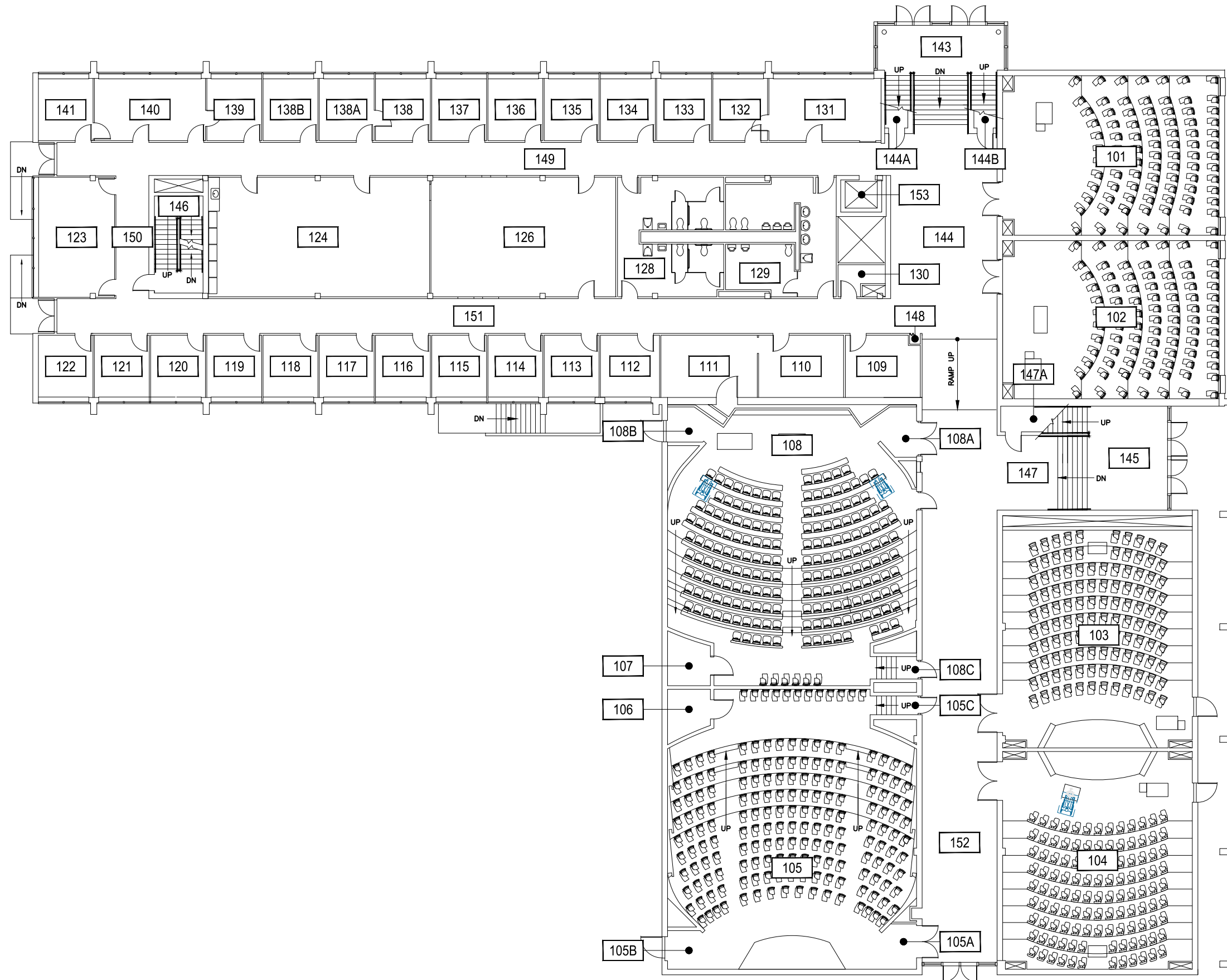
Dec 16, 2016 - 9:19am - 115_AB.dwg
 H:\Reid Hall\Building Plan - Book Copy\

1
REID HALL - BASEMENT LEVEL
 SCALE: 1" = 20'



M MONTANA
 STATE UNIVERSITY
 CAMPUS PLANNING,
 DESIGN & CONSTRUCTION
 BOZEMAN, MONTANA
 PHONE: 406.994.5413 FAX: 406.994.5665

INDEX #	14
BUILDING #	115



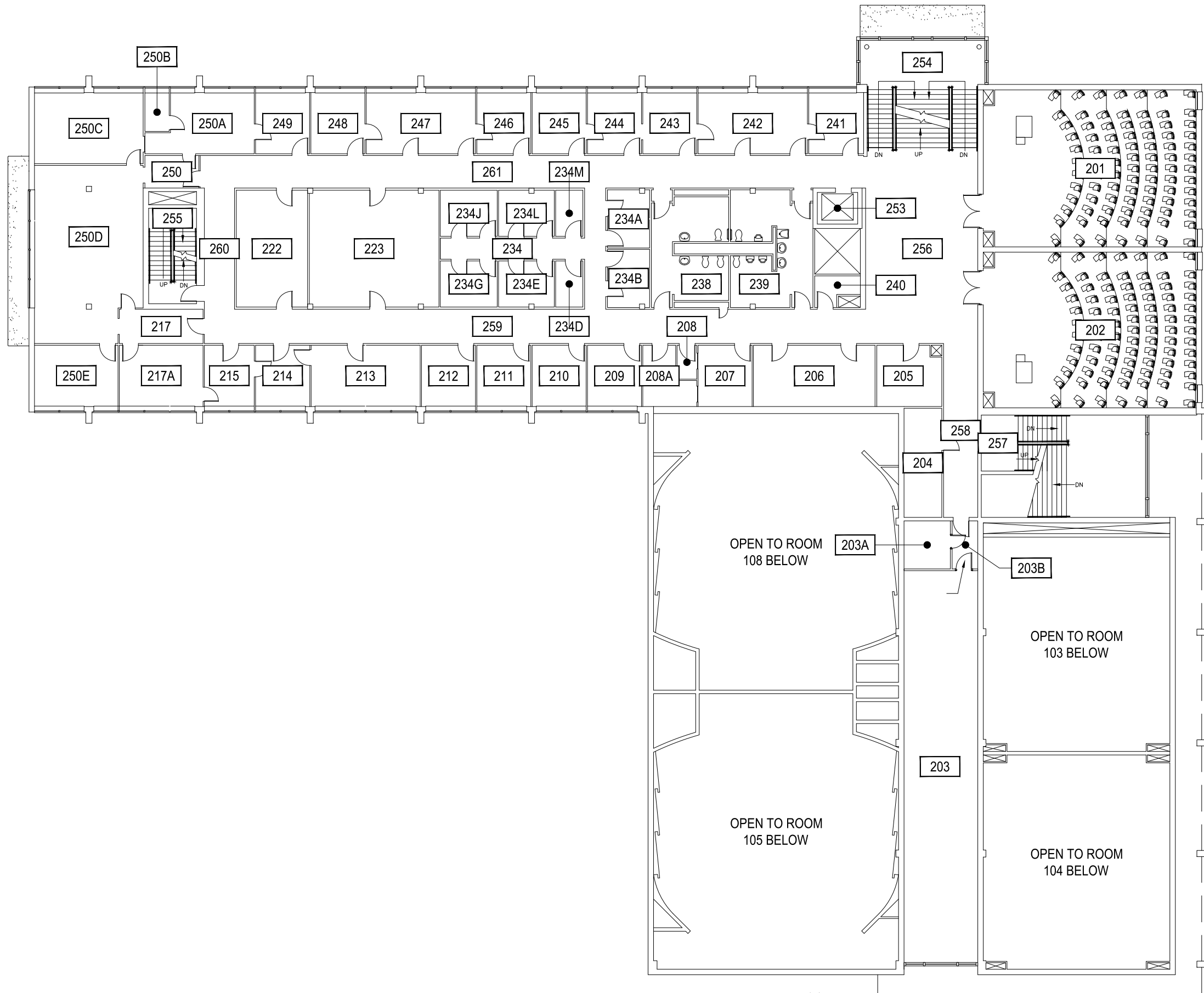
1 REID HALL - FIRST LEVEL
SCALE: 1" = 20'



Dec 16, 2016 - 9:20am - 115_A1.dwg
H:\Reid Hall\Building Plan - Book Copy\

M MONTANA STATE UNIVERSITY
CAMPUS PLANNING,
DESIGN & CONSTRUCTION
BOZEMAN, MONTANA
PHONE: 406.994.5413 FAX: 406.994.5665

INDEX #
14
BUILDING #
115



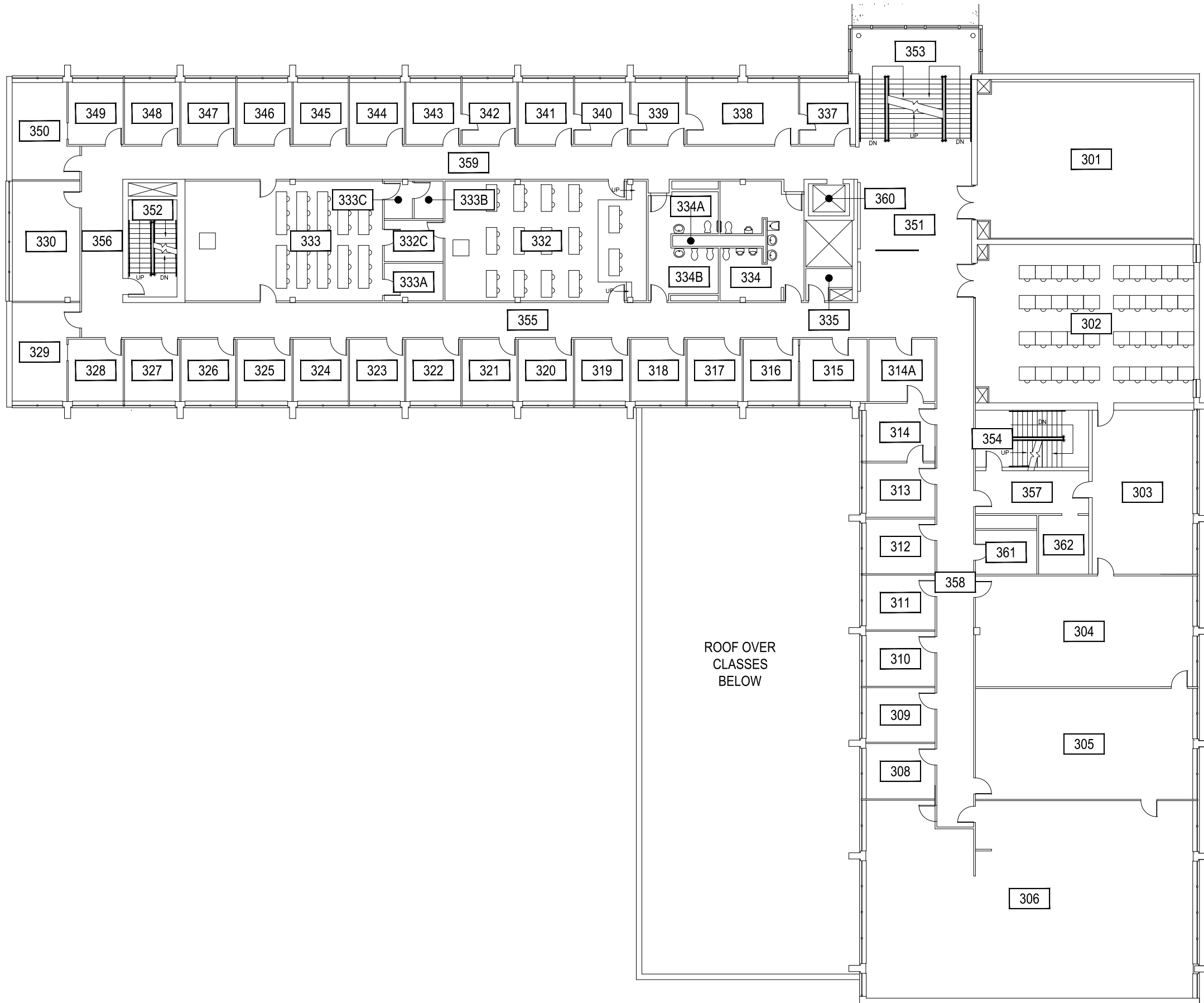
1 REID HALL - SECOND LEVEL
 SCALE: 1" = 20'



Dec 16, 2016 - 9:20am - 115_A2.dwg
 H:\Reid Hall\Building Plan - Book Copy\

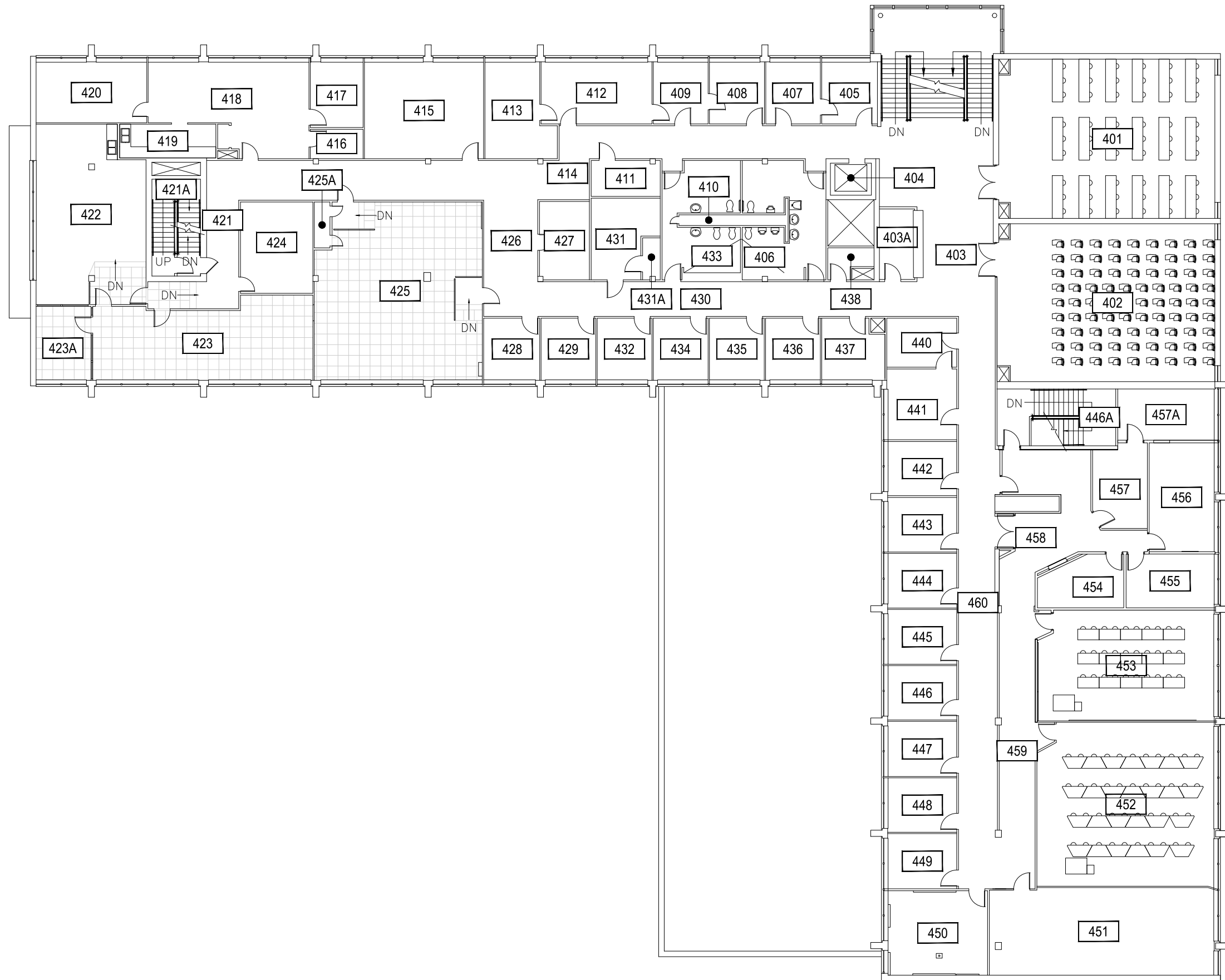
M MONTANA STATE UNIVERSITY
 CAMPUS PLANNING,
 DESIGN & CONSTRUCTION
 BOZEMAN, MONTANA
 PHONE: 406.994.5413 FAX: 406.994.5665

INDEX #
14
 BUILDING #
115



1 REID HALL - THIRD LEVEL
SCALE: 1" = 20'

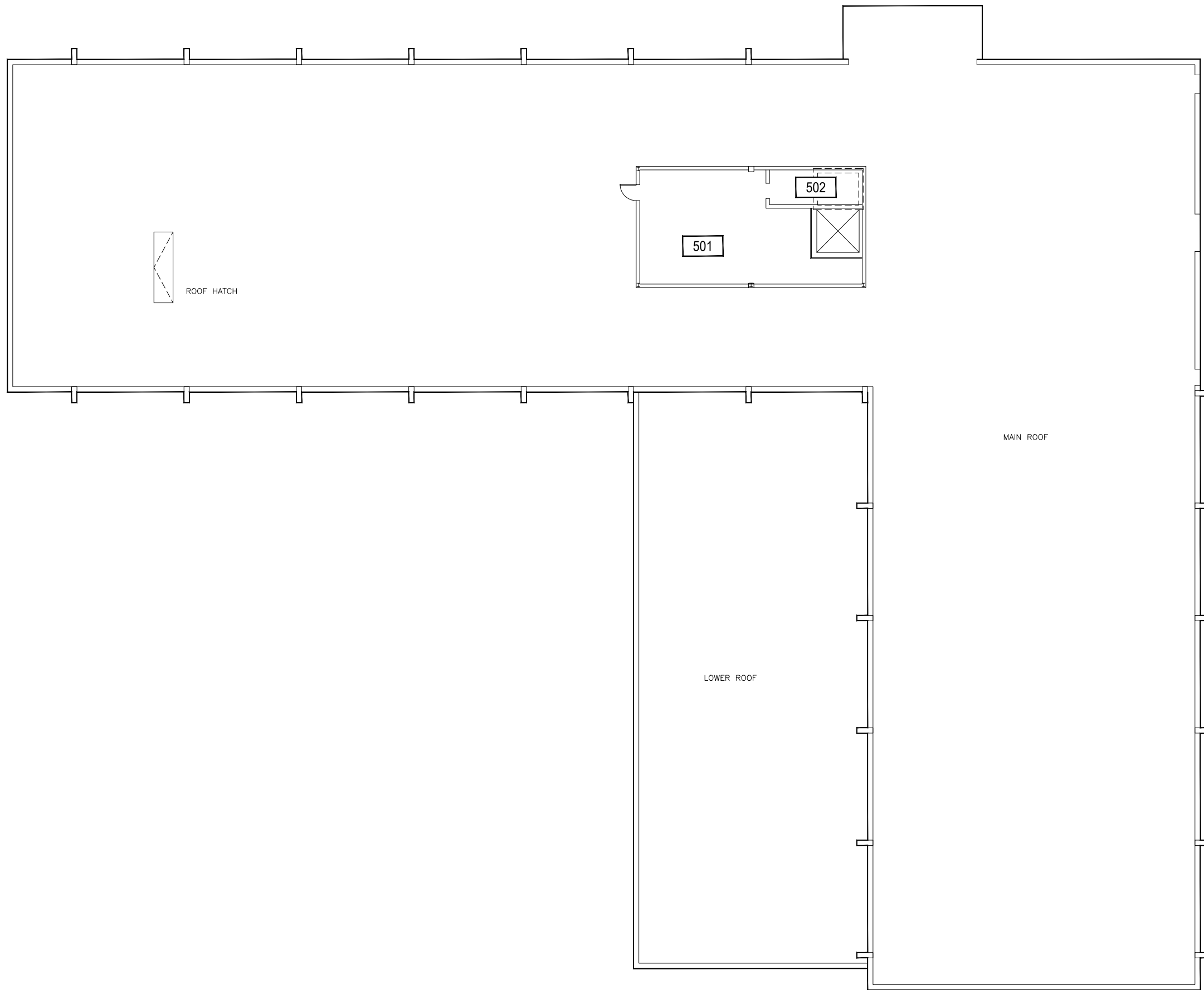




1 REID HALL - FOURTH LEVEL
 SCALE: 1" = 20'

M MONTANA STATE UNIVERSITY
 CAMPUS PLANNING, DESIGN & CONSTRUCTION
 BOZEMAN, MONTANA
 PHONE: 406.994.5413 FAX: 406.994.5665

INDEX # 14
 BUILDING # 115



Dec 16, 2016 - 9:20am - 115_A5.dwg
 H:\Reid Hall\Building Plan - Book Copy\

1 REID HALL - FIFTH LEVEL
 SCALE: 1" = 20'



M MONTANA
 STATE UNIVERSITY
 CAMPUS PLANNING,
 DESIGN & CONSTRUCTION
 BOZEMAN, MONTANA
 PHONE: 406.994.5413 FAX: 406.994.5665

INDEX # **14**
 BUILDING # **115**



1 REID HALL - ROOF LEVEL
SCALE: 1" = 20'

