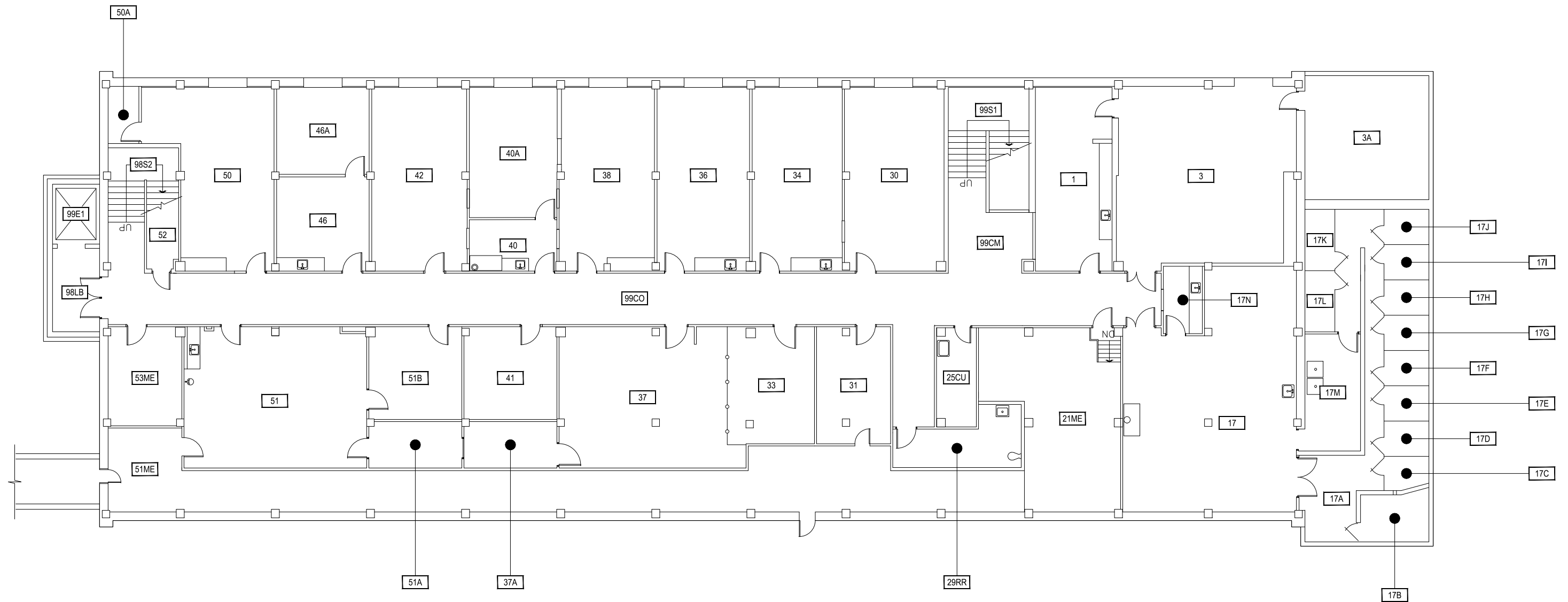


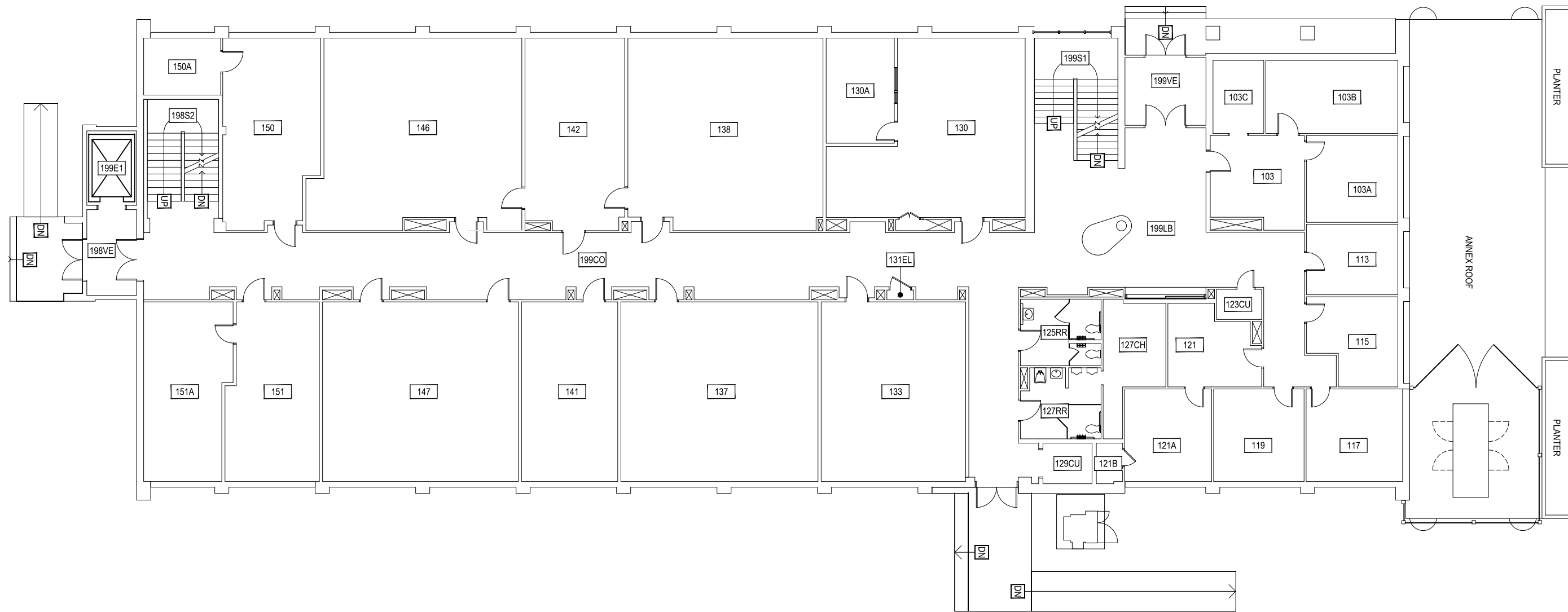
Dec 20, 2016 - 10:10am - 113_AB.dwg
H:\AJM Johnson Hall\Building Plan - Book Copy\



1 AJM JOHNSON HALL - BASEMENT LEVEL
SCALE: 1/16" = 1'

M MONTANA STATE UNIVERSITY
CAMPUS PLANNING,
DESIGN & CONSTRUCTION
BOZEMAN, MONTANA
PHONE: 406.994.5413 FAX: 406.994.5665

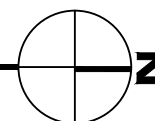
INDEX #	7
BUILDING #	113

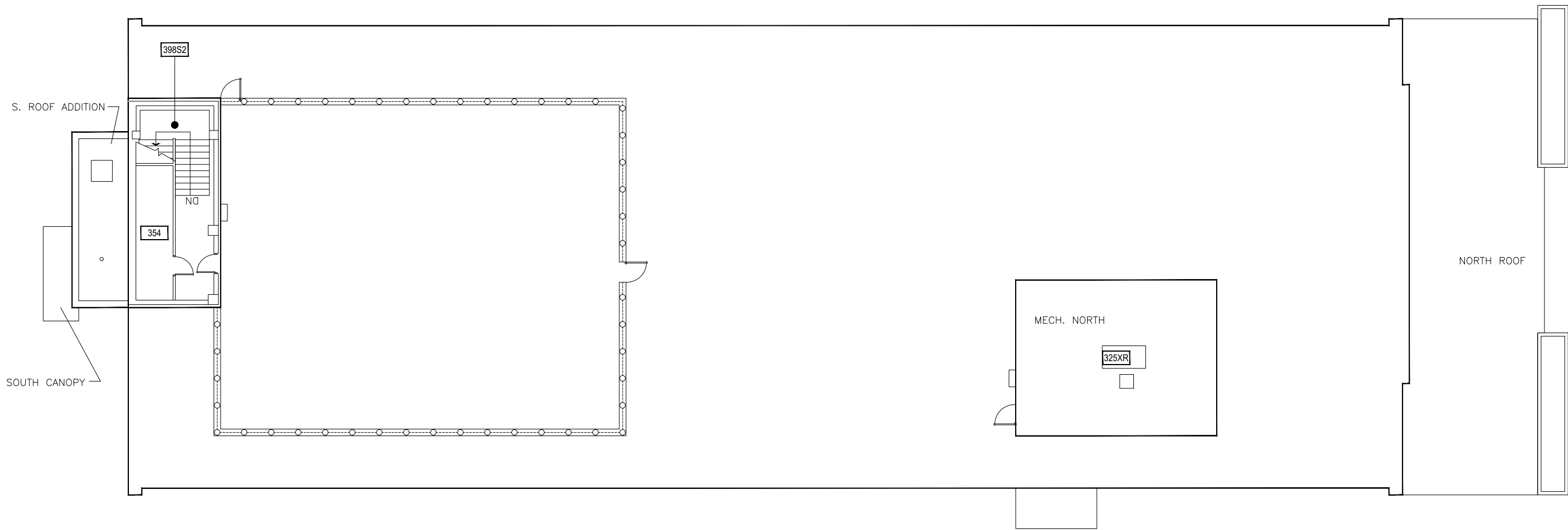


1

AJM JOHNSON HALL - FIRST LEVEL

SCALE: 1/16" = 1'

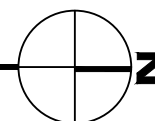




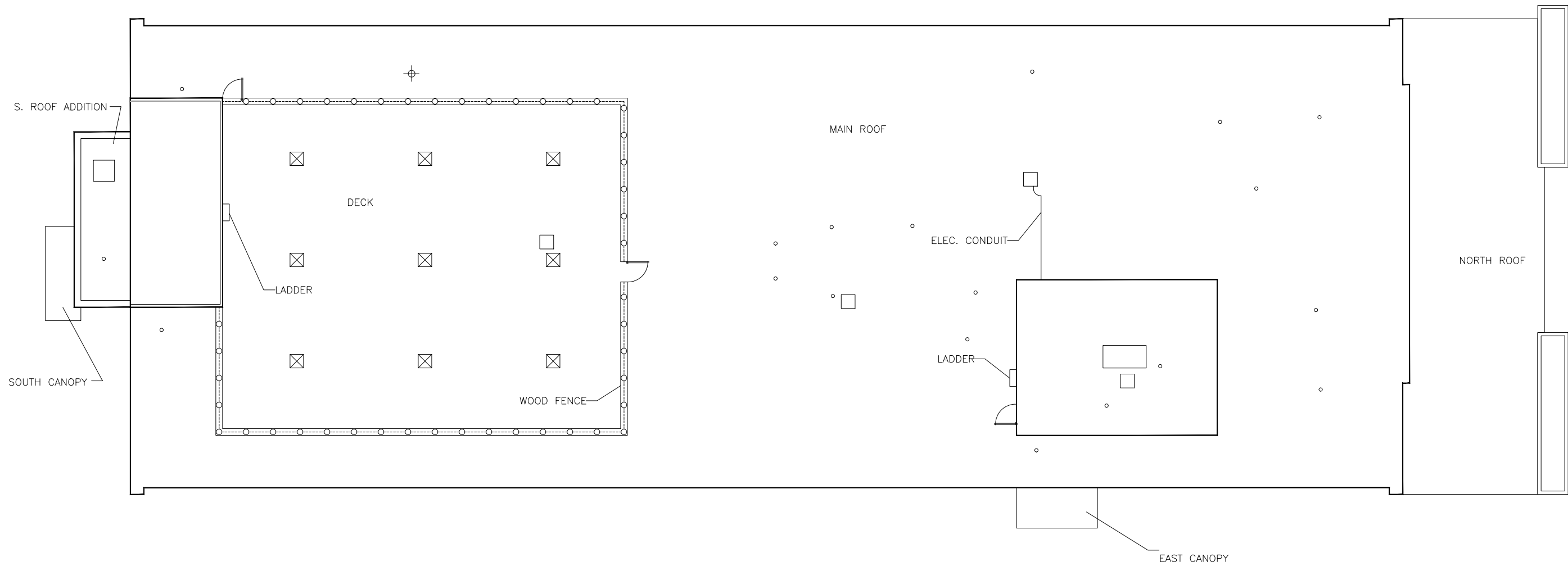
1

AJM JOHNSON HALL - THIRD LEVEL

SCALE: 1/16" = 1'



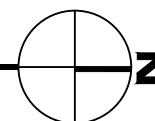
Dec 20, 2016 - 10:10am - 113_AR.dwg
H:\AJM Johnson Hall\Building Plan - Book Copy\



1

AJM JOHNSON HALL - ROOF LEVEL

SCALE: 1/16" = 1'



M MONTANA
STATE UNIVERSITY
CAMPUS PLANNING,
DESIGN & CONSTRUCTION
BOZEMAN, MONTANA
PHONE: 406.994.5413 FAX: 406.994.5665

INDEX #

7

BUILDING #

113