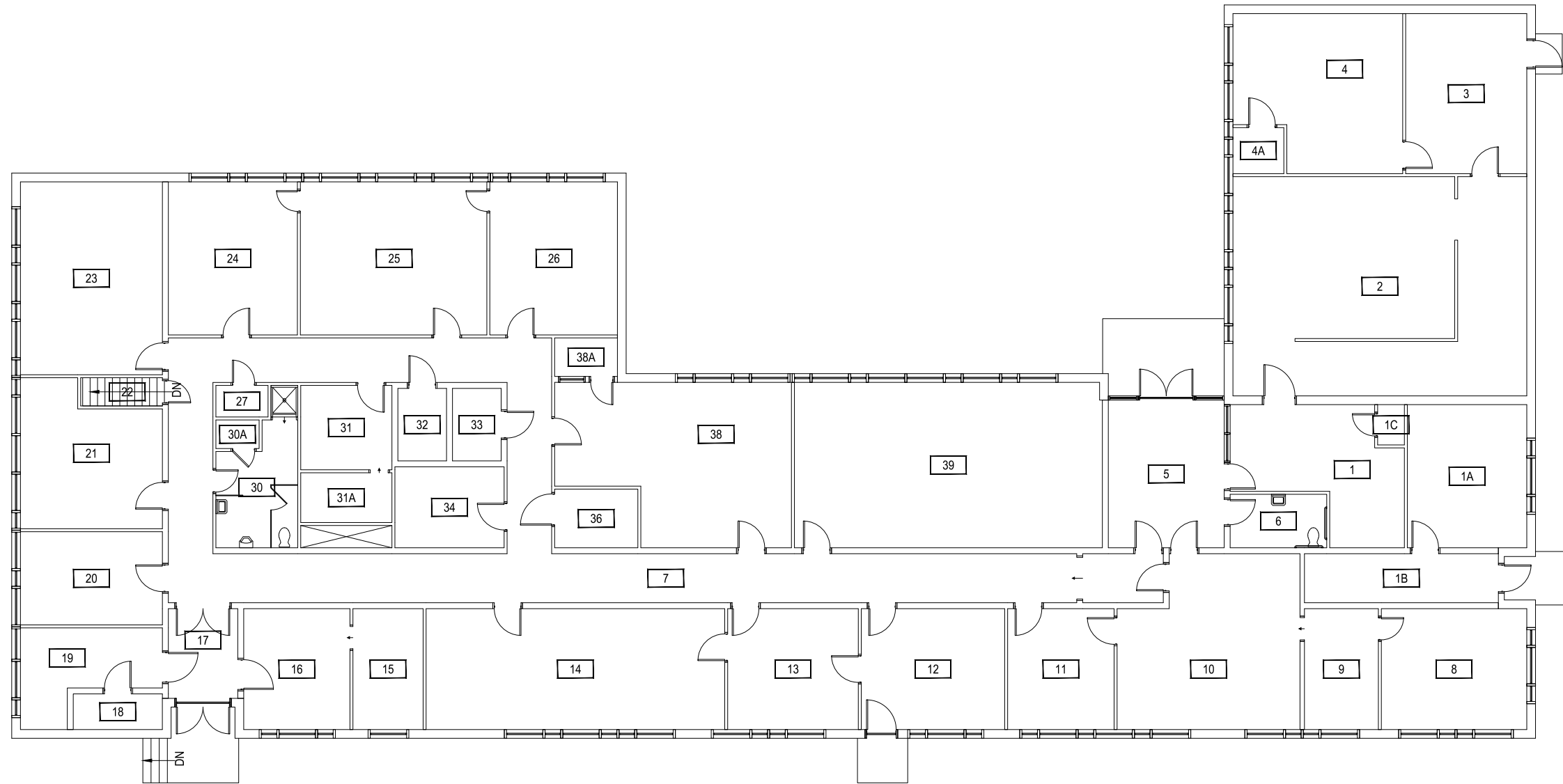


1 McCALL HALL - BASEMENT LEVEL
SCALE: 1" = 15'

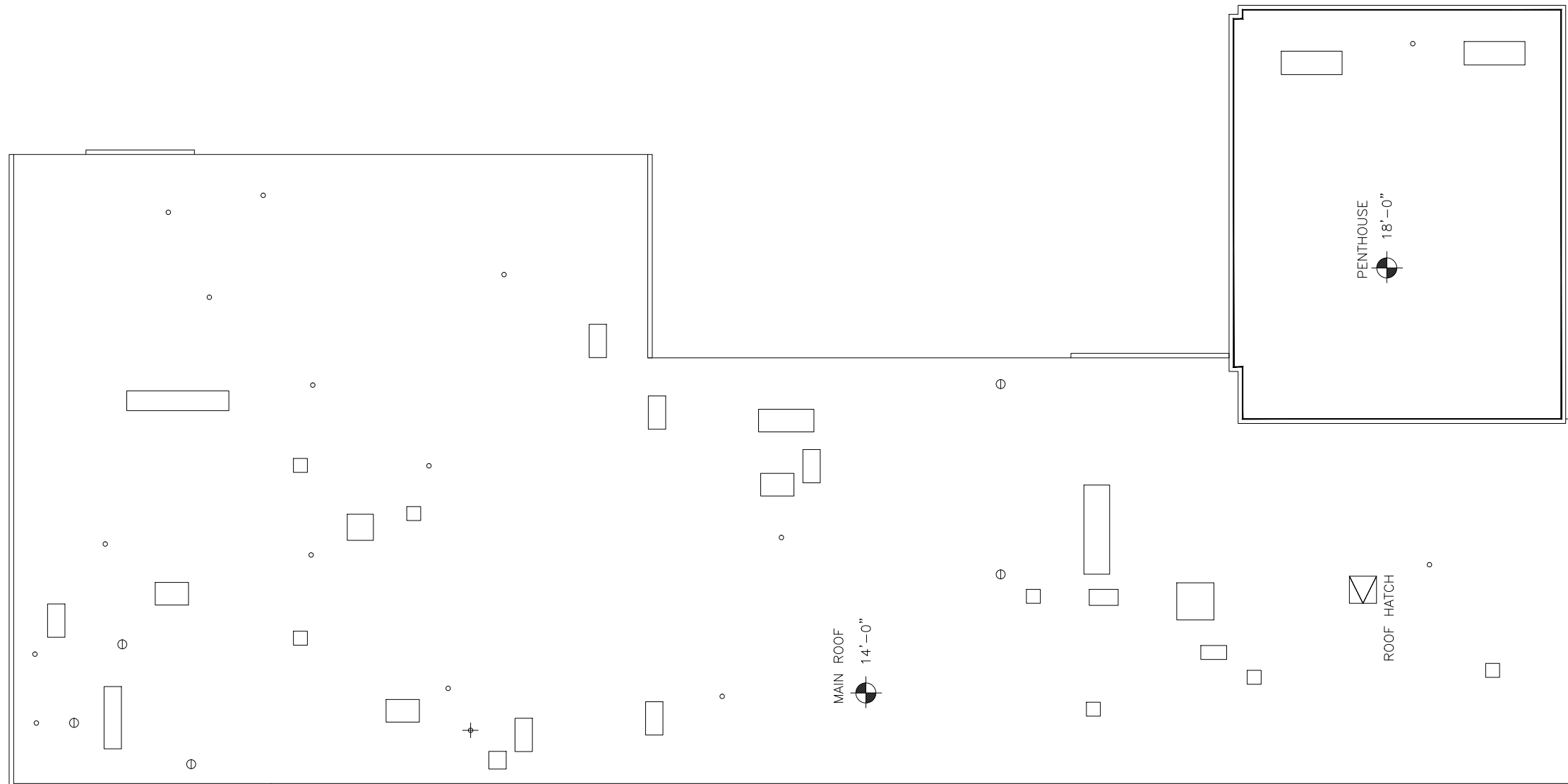




1 McCALL HALL - FIRST LEVEL
SCALE: 1" = 15'



Dec 16, 2016 - 9:16am - 112_AR.dwg
H:\McCall Hall\Building Plan - Book Copy\



1 McCALL HALL - ROOF LEVEL **2**

SCALE: 1" = 15'

M MONTANA
STATE UNIVERSITY
CAMPUS PLANNING,
DESIGN & CONSTRUCTION
BOZEMAN, MONTANA
PHONE: 406.994.5413 FAX: 406.994.5665

INDEX # **10**
BUILDING # **112**